

EXCLUSIVELY  
LISTED BY



**Craig Gilbert**

Principal Broker

[cgilbert@windermere.com](mailto:cgilbert@windermere.com)

503-313-8282

PDXCOMMERCIAL.COM  
2105 NE CÉSAR E CHÁVEZ  
BLVD. SUITE 220  
PORTLAND, OR



**FOR SALE**

**5707 N INTERSTATE  
PORTLAND, OR 97217**

**\$774,900**

- 2,238 SF 1960'S OFFICE/MEDICAL BUILDING
- CURRENT BUILD-OUT AS DENTAL OFFICE
- SIZABLE RECEPTION, UP TO 10 EXAM ROOMS
- RM3 ZONING, INTERSTATE CORRIDOR  
URBAN RENEWAL AREA



## ENTRY/LOBBY & RECEPTION



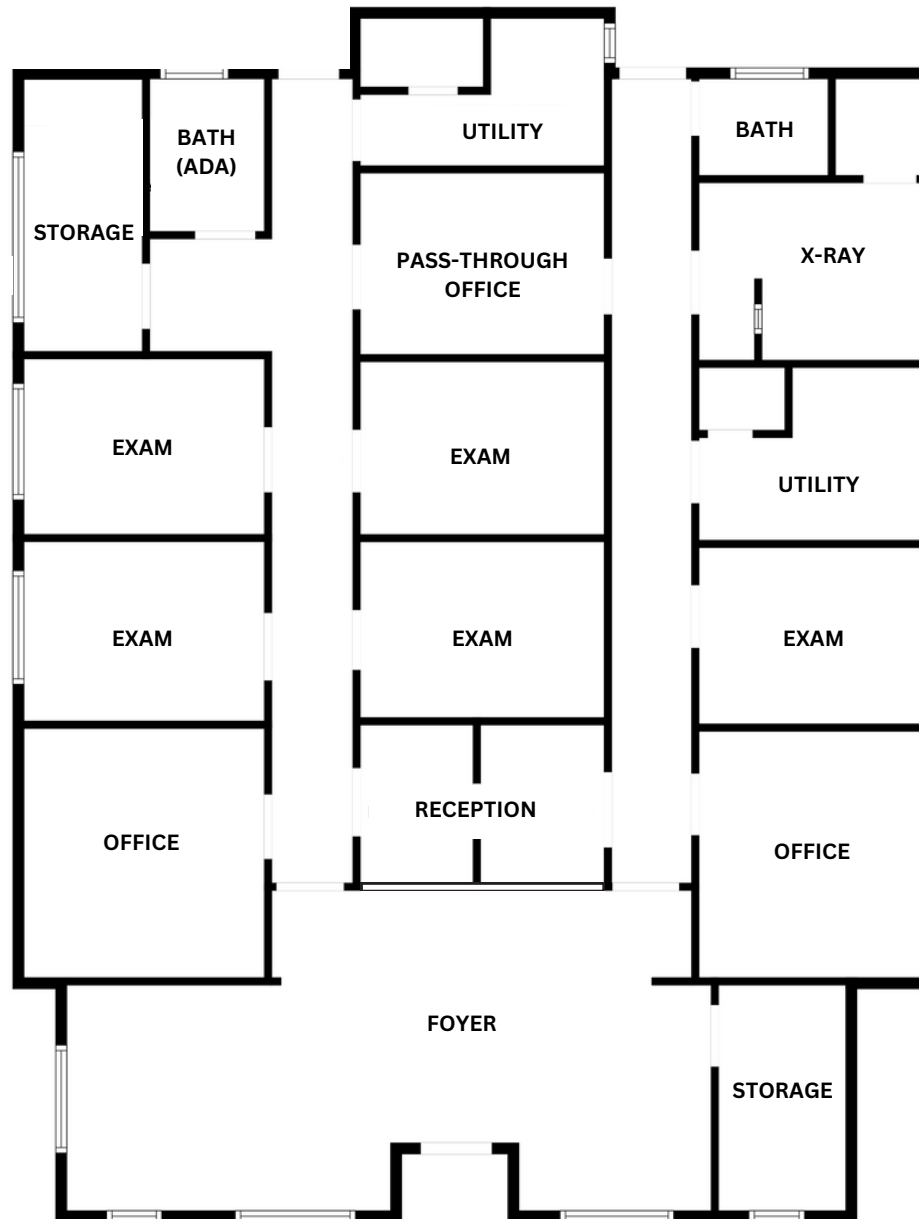
## PRIVATE OFFICE & EXAM ROOM



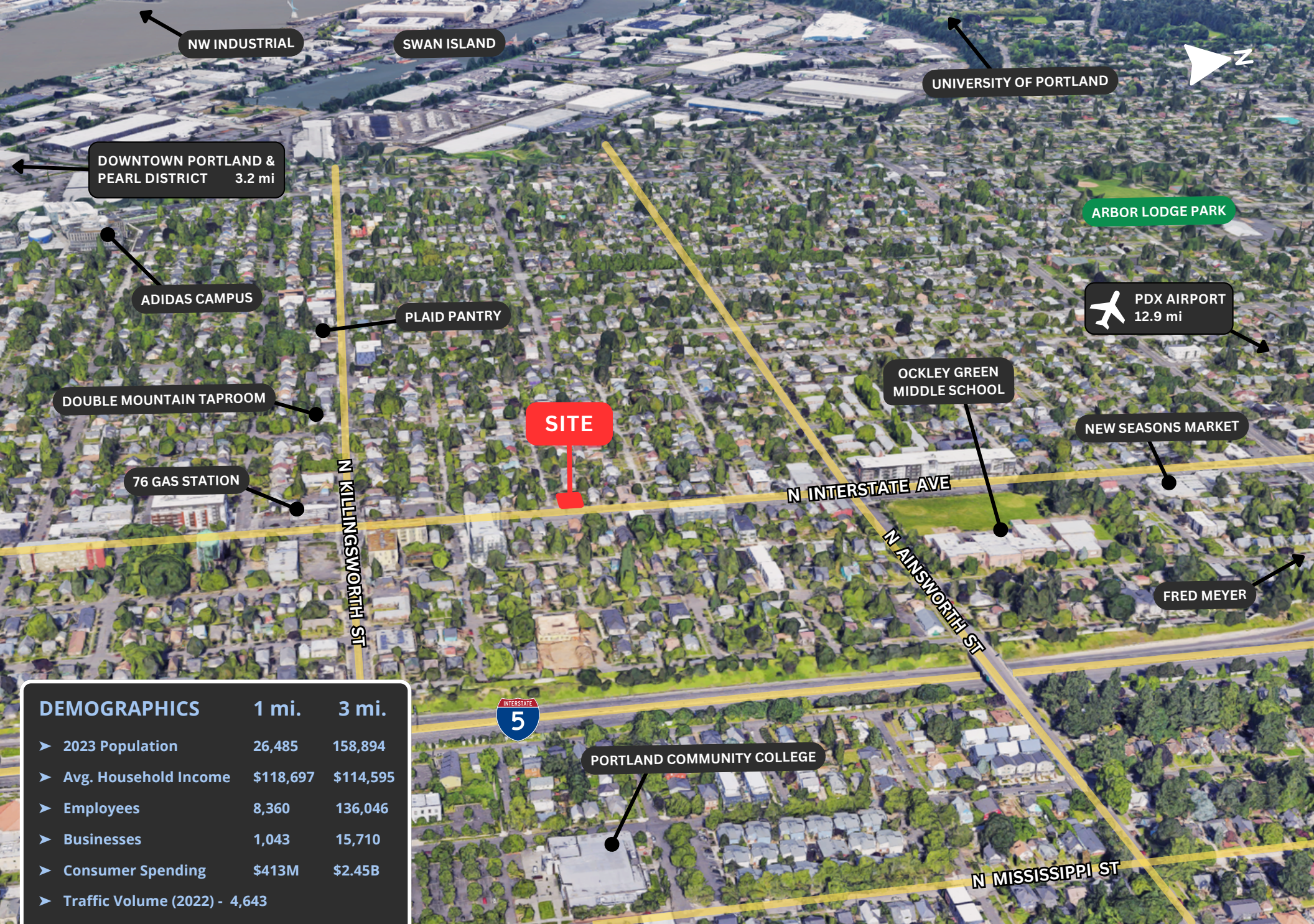
# 5707 N Interstate Ave

Portland, OR 97217

2,238 SF







NW INDUSTRIAL

SWAN ISLAND

UNIVERSITY OF PORTLAND

DOWNTOWN PORTLAND & PEARL DISTRICT 3.2 mi

ARBOR LODGE PARK

ADIDAS CAMPUS

PLAID PANTRY

PDX AIRPORT 12.9 mi

DOUBLE MOUNTAIN TAPROOM

SITE

OCKLEY GREEN MIDDLE SCHOOL

NEW SEASONS MARKET

76 GAS STATION

N KILLINGSWORTH ST

N INTERSTATE AVE

FRED MEYER

N AINSWORTH ST

**DEMOGRAPHICS**

1 mi. 3 mi.

- 2023 Population 26,485 158,894
- Avg. Household Income \$118,697 \$114,595
- Employees 8,360 136,046
- Businesses 1,043 15,710
- Consumer Spending \$413M \$2.45B
- Traffic Volume (2022) - 4,643



PORTLAND COMMUNITY COLLEGE

N MISSISSIPPI ST