

Standard
Sign Group
series
HOME DECOR

cag COMMERCIAL
ASSET GROUP
FOR LEASE
David Ickovics
Tiffany Lotz
310-275-8222

**14516 VENTURA BLVD
SHERMAN OAKS, CA 91403**



**Sinc
Sy**

14516

WE DELIVER
AND **PLAN!**

Chertron



**PRIME VENTURA BOULEVARD RETAIL SPACE
FOR LEASE**



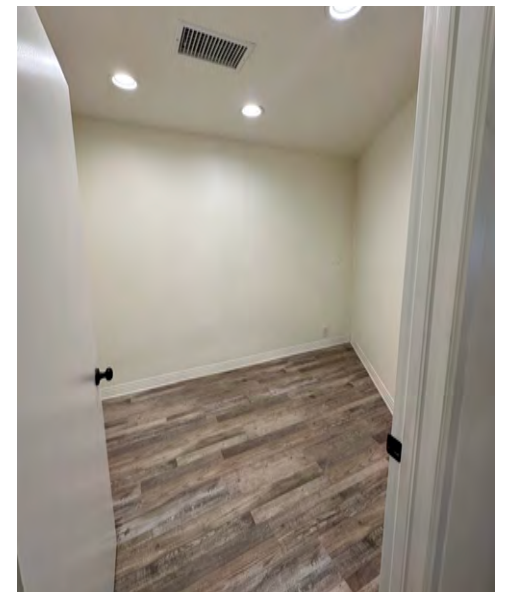
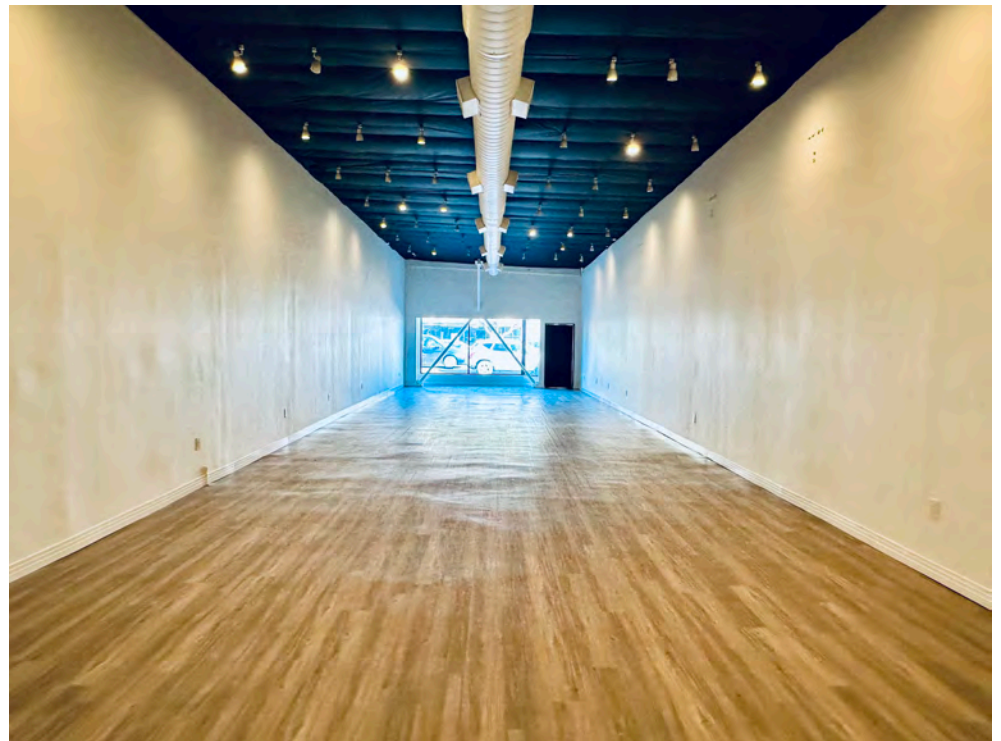
- Prime location in Sherman Oaks close to dining and shopping
- Storefront signage
- High pedestrian and vehicle traffic volume
- Located near densely populated high income residential communities
- Convenient access to the 101 and 405 Freeways

LEASE RATE
\$2.95 PSF/MO
(NNN=\$0.89 PSF/MONTH
FOR 2024)

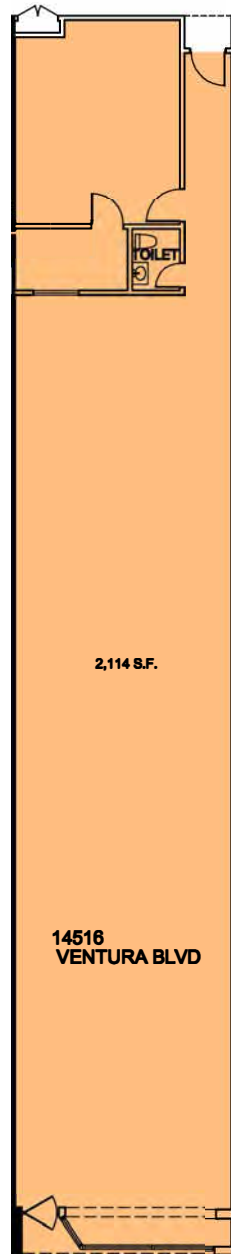
SPACE SIZE
±2,114 SF

AVAILABLE
IMMEDIATELY

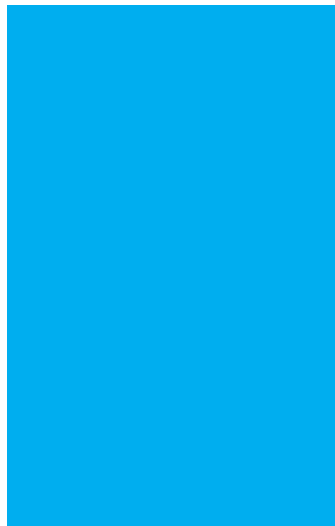
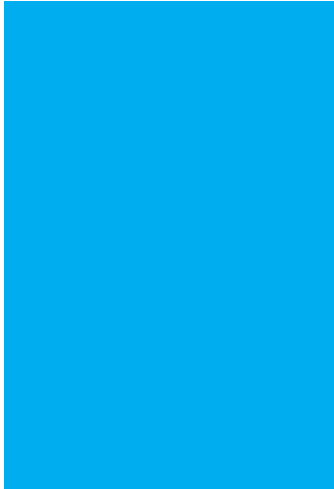




ADDITIONAL PHOTOS



FLOOR PLAN



DEMOGRAPHICS

TOTAL POPULATION

1 MILE: 28,580

2 MILE: 89,980

3 MILE: 166,852

AVERAGE HOUSEHOLD INCOME

1 MILE: \$129,095

2 MILE: \$131,749

3 MILE: \$125,328

MEDIAN AGE

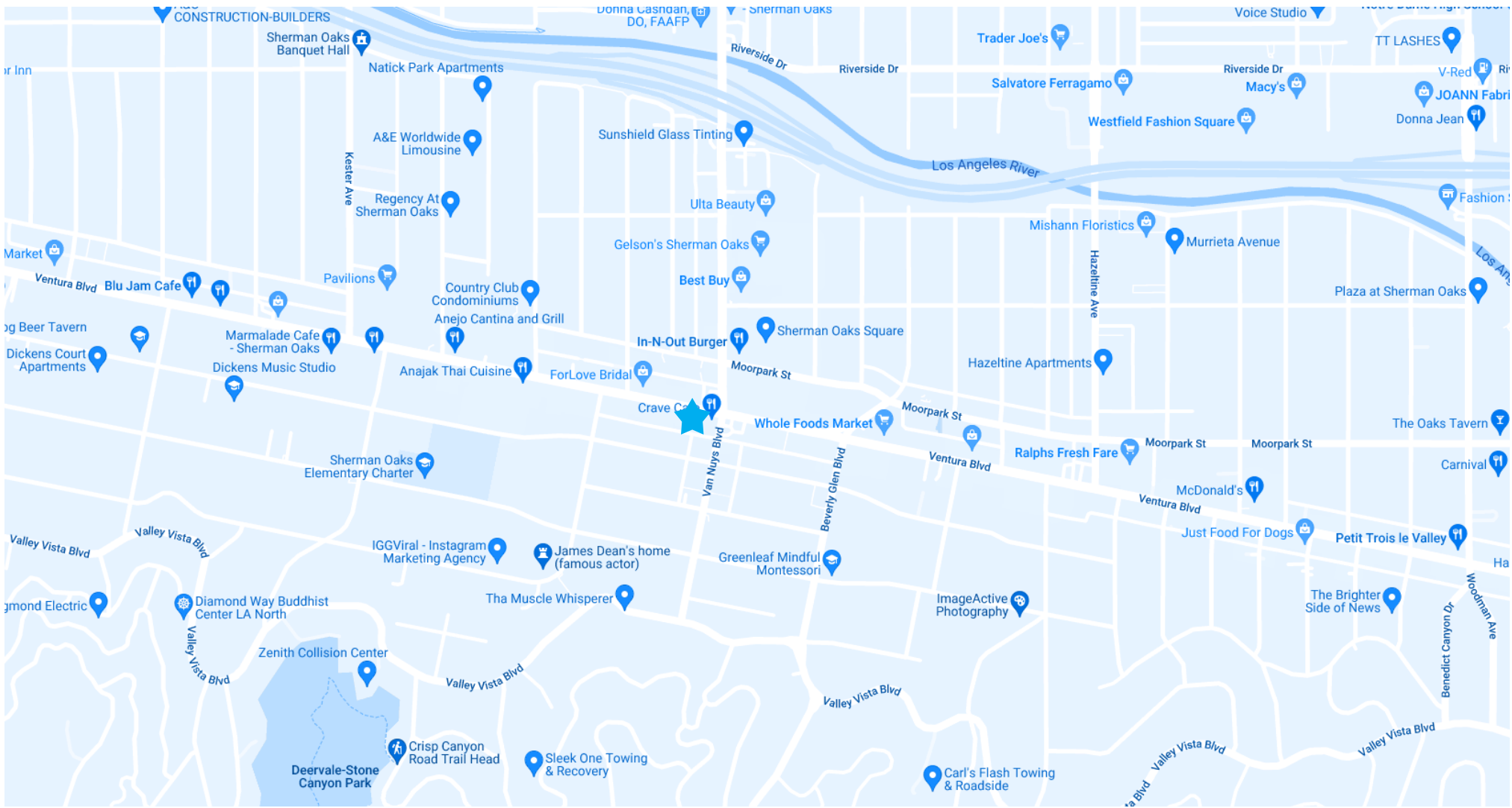
1 MILE: 43

2 MILE: 43

3 MILE: 42

WALK SCORE

85



MAP

Standard
Design Group
Interior Series

HOME DECOR

 **COMMERCIAL
ASSET GROUP**
FOR LEASE
David Ickovics
Tiffany Lotz
310-275-8222



Si
S

14518

DAVID ICKOVICS

PRINCIPAL
P 310.272.7380
E DJI@CAGRE.COM
LIC. 01315424

TIFFANY LOTZ

DIRECTOR
P 310.272.7385
E TIFFANY@CAGRE.COM
LIC. 01879870

DAVID ASCHKENASY

EXECUTIVE VICE PRESIDENT
P 310.272.7381
E DAVIDA@CAGRE.COM
LIC. 01714442

COMMERCIAL ASSET GROUP

1801 CENTURY PARK EAST, STE 1550
LOS ANGELES, CA 90067
P 310.275.8222 F 310.275.8223
WWW.CAGRE.COM LIC. 01876070