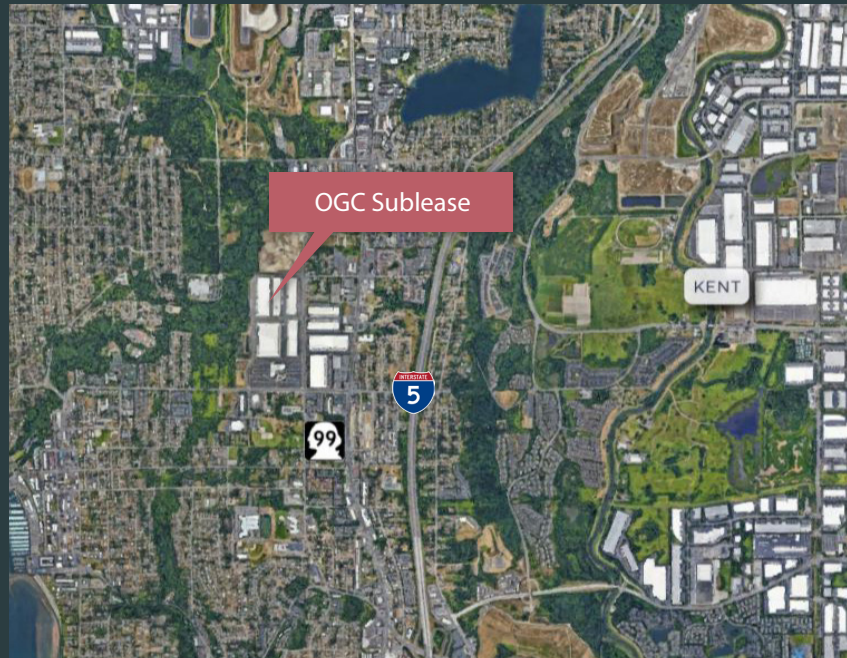


For Sublease | 41,559 SF



2231 South 208th Street, Des Moines, WA 98198

41,559 SF Total
1,346 SF Office
14 DH / 2 GL
30' Clear height
Energy efficient T-5 lights
Immediate access to I-5
400 amps, 277/480v 3-phase
ESFR Sprinklers
Available October 1, 2024



Please contact

Matt Wood, SIOR
206 595 6814
matt.wood@kbcadvisors.com

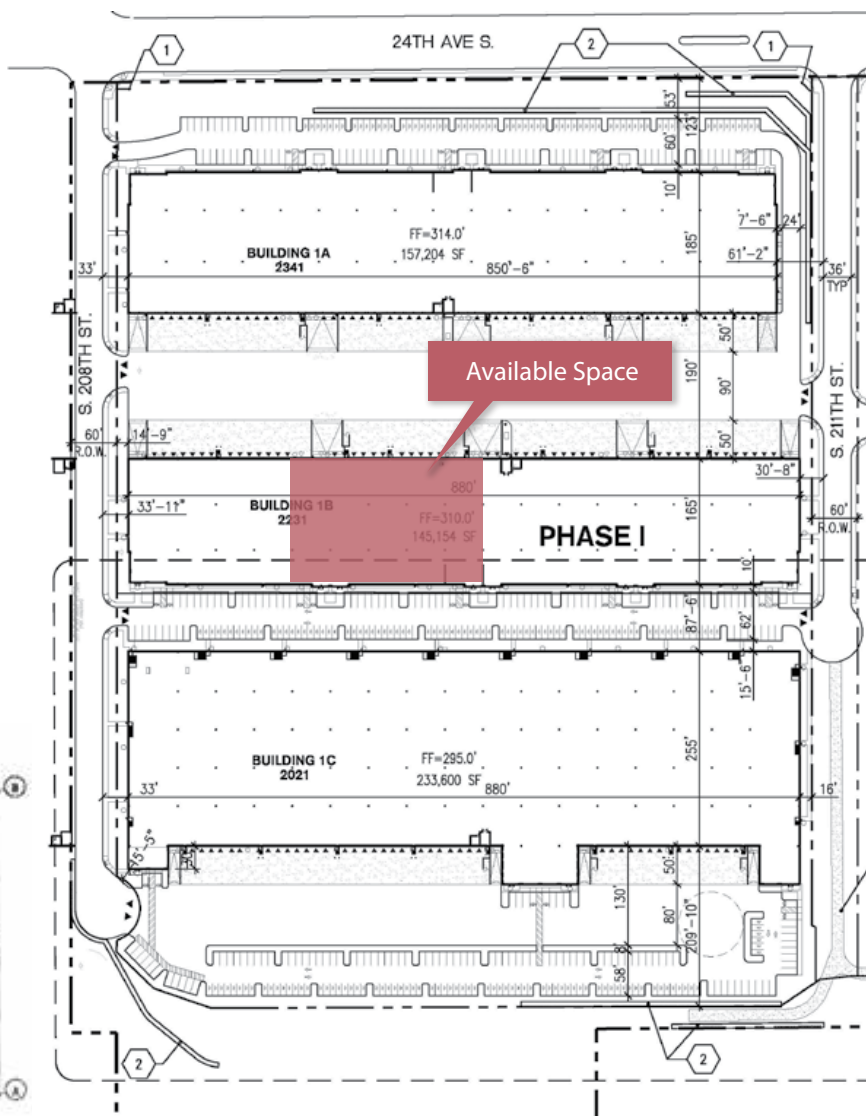
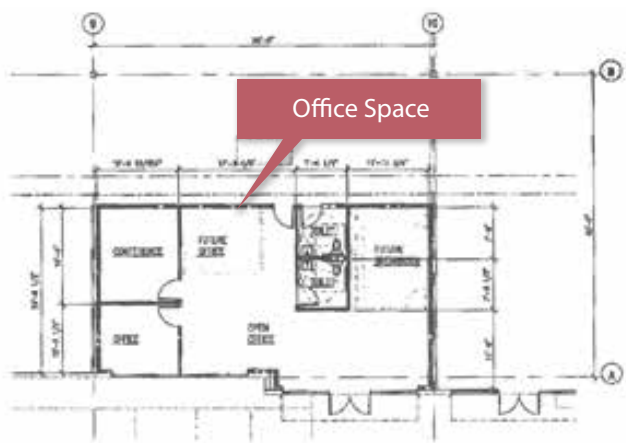
Travis Stanaway
206 248 6526
travis.stanaway@kidder.com

KBCADVISORS.COM

For Sublease

2231 South 208th Street, Des Moines, WA 98198

41,559 SF Total
1,346 SF Office
14 DH / 2 GL
30' Clear height
Energy efficient T-5 lights
Immediate access to I-5
400 amps, 277/480v 3-phase
ESFR Sprinklers
Available October 1, 2024



Please contact

Matt Wood, SIOR
206 595 6814
matt.wood@kbcadvisors.com

Travis Stanaway
206 248 6526
travis.stanaway@kidder.com

KBCADVISORS.COM

© 2024 KBC ADVISORS This information has been obtained from sources believed to be reliable but has not been verified for accuracy or completeness. You should conduct a careful, independent investigation of the property and verify all information. Any reliance on this information is solely at your own risk. The KBC ADVISORS logo is a service mark of KBC ADVISORS. All other marks displayed on this document are the property of their respective owners. Photos herein are the property of their respective owners. Use of these images without the express written consent of the owners is prohibited.