

AVAILABLE SPACES FOR LEASE

KALAHEO CENTER

2-2436 KAUMUALII HWY, KALAHEO, HI 96741



CUSHMAN &
WAKEFIELD

ChaneyBrooks



HIGHLIGHTS

- Prime neighborhood center in Kalaheo
- High visibility along Kaumualii Highway
- Convenient Access
- Large parking field

Contact

ARACELI BENSON (S)

Real Estate Advisor
+1 808 246 0634
abenson@chaneybrooks.com

JOSEPH T. HAAS (PB)

Managing Director
+1 808 864 6464
jhaas@chaneybrooks.com

• 4303 Rice St, Suite C4,
Lihue, Hawaii 96766
• 1440 Kapiolani Blvd, Suite 1010,
Honolulu, Hawaii 96814
www.chaneybrooks.com

©2023 Cushman & Wakefield. All rights reserved. The information contained in this communication is strictly confidential. This information has been obtained from sources believed to be reliable but has not been verified. No warranty or representation, express or implied, is made as to the condition of the property (or properties) referenced herein or as to the accuracy or completeness of the information contained herein, and same is submitted subject to errors, omissions, change of price, rental or other conditions, withdrawal without notice, and to any special listing conditions imposed by the property owner(s). Any projections, opinions or estimates are subject to uncertainty and do not signify current or future property performance.

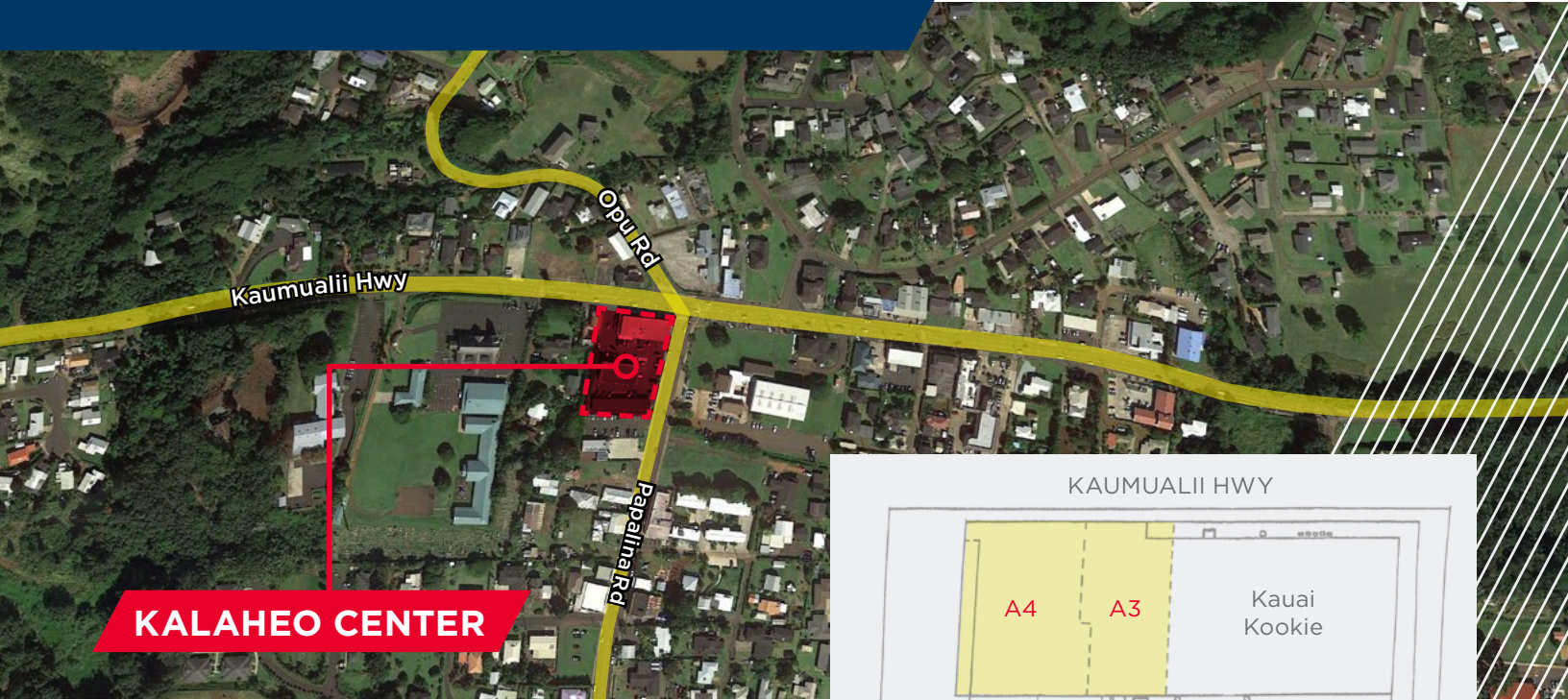
AVAILABLE SPACES FOR LEASE KALAHEO CENTER

2-2436 KAUMUALII HWY, KALAHEO, HI 96741



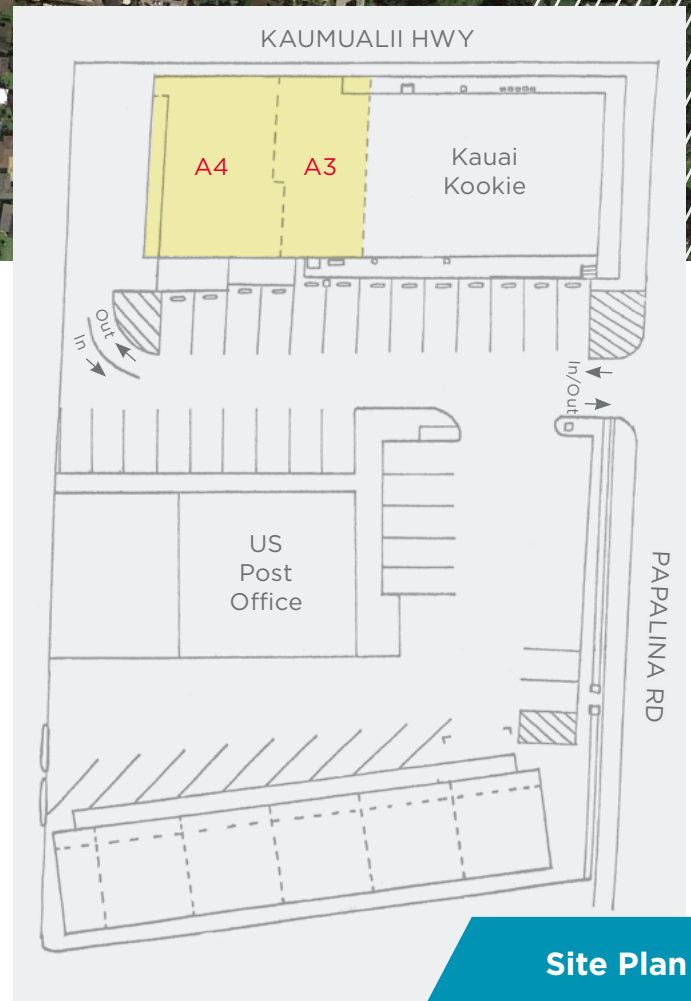
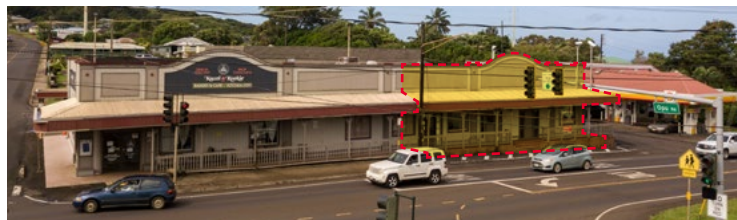
CUSHMAN &
WAKEFIELD

ChaneyBrooks



PROPERTY DETAILS

Available Spaces	600 SF - 2,310 SF
• A-3	900 SF
• A-4	1,410 SF
Base Rent	\$2.00/SF - \$2.50/SF
Operating Expense	\$0.89/SF per month
Term	3+ years
Total GLA	14,689 SF
Zoning	General Commercial
Anchor Tenants	US Post Office, Kauai Kookie



Site Plan

Contact

ARACELI BENSON (S)
Real Estate Advisor
+1 808 246 0634
abenon@chaneybrooks.com

JOSEPH T. HAAS (PB)
Managing Director
+1 808 864 6464
jhaas@chaneybrooks.com

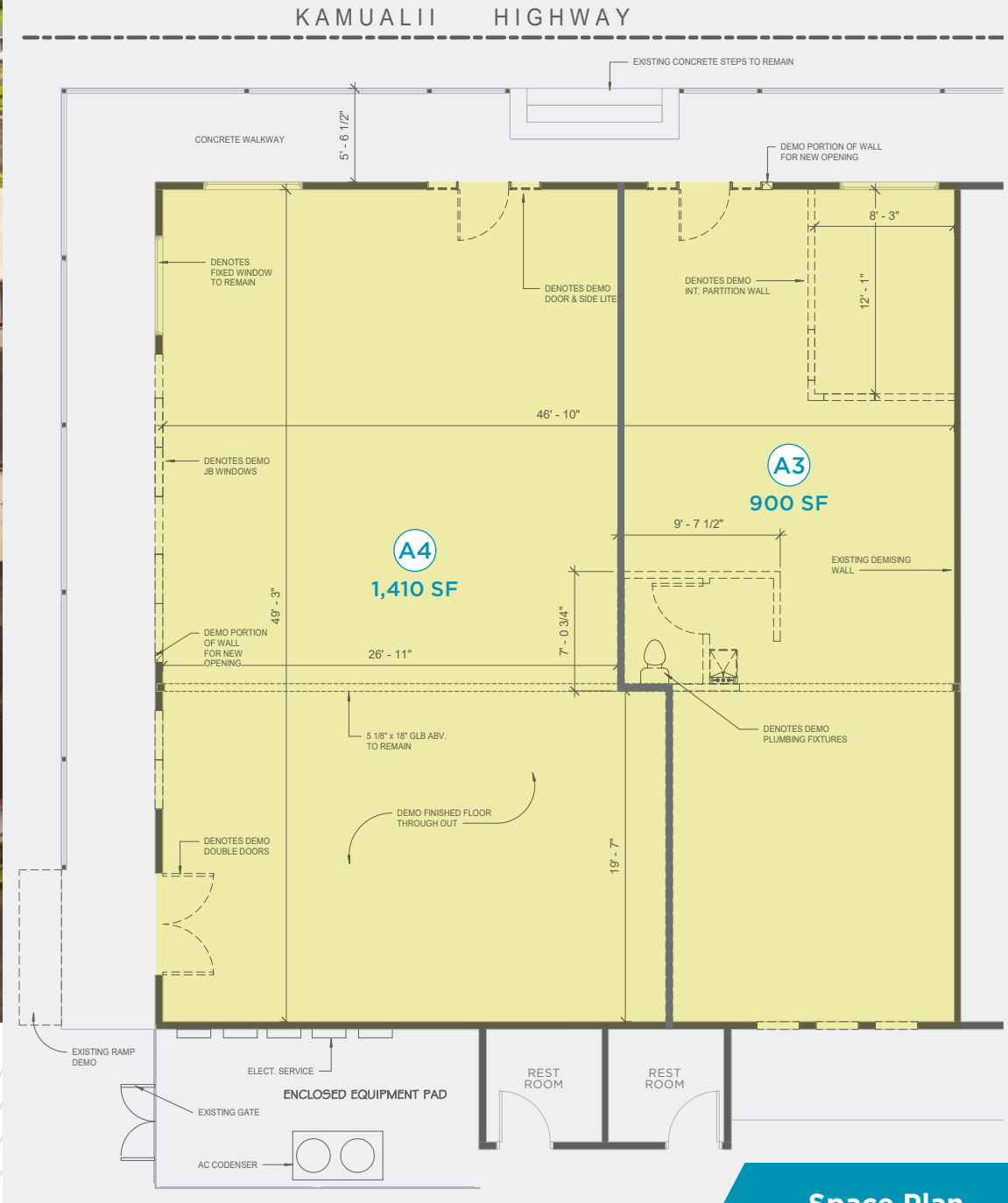
• 4303 Rice St, Suite C4,
Lihue, Hawaii 96766
• 1440 Kapiolani Blvd, Suite 1010,
Honolulu, Hawaii 96814
www.chaneybrooks.com

©2023 Cushman & Wakefield. All rights reserved. The information contained in this communication is strictly confidential. This information has been obtained from sources believed to be reliable but has not been verified. No warranty or representation, express or implied, is made as to the condition of the property (or properties) referenced herein or as to the accuracy or completeness of the information contained herein, and same is submitted subject to errors, omissions, change of price, rental or other conditions, withdrawal without notice, and to any special listing conditions imposed by the property owner(s). Any projections, opinions or estimates are subject to uncertainty and do not signify current or future property performance.

AVAILABLE SPACES FOR LEASE

KALAHEO CENTER

2-2436 KAUMUALII HWY, KALAHEO, HI 96741



Space Plan

Contact

ARACELI BENSON (S)
 Real Estate Advisor
 +1 808 246 0634
 abenson@chaneybrooks.com

JOSEPH T. HAAS (PB)
 Managing Director
 +1 808 864 6464
 jhaas@chaneybrooks.com

- 4303 Rice St, Suite C4, Lihue, Hawaii 96766
 - 1440 Kapiolani Blvd, Suite 1010, Honolulu, Hawaii 96814
- www.chaneybrooks.com

©2023 Cushman & Wakefield. All rights reserved. The information contained in this communication is strictly confidential. This information has been obtained from sources believed to be reliable but has not been verified. No warranty or representation, express or implied, is made as to the condition of the property (or properties) referenced herein or as to the accuracy or completeness of the information contained herein, and same is submitted subject to errors, omissions, change of price, rental or other conditions, withdrawal without notice, and to any special listing conditions imposed by the property owner(s). Any projections, opinions or estimates are subject to uncertainty and do not signify current or future property performance.