



Opportunity on The Green

2,485 SF Available for Lease

40 West Park Place, Morristown, NJ 07960

Craig Parcells

Senior Vice President

craig.parcells@jll.com

M: +1 201 618 7223

Madeline Voorhees

Sales Coordinator

madeline.voorhees@jll.com

M: +1 908 255 3722

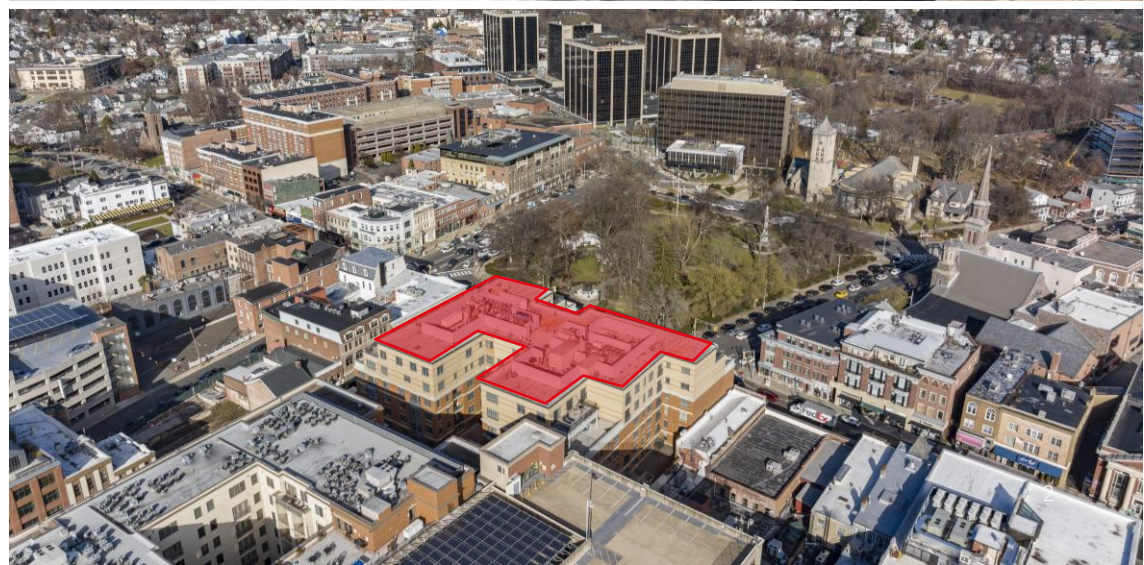


Property highlights

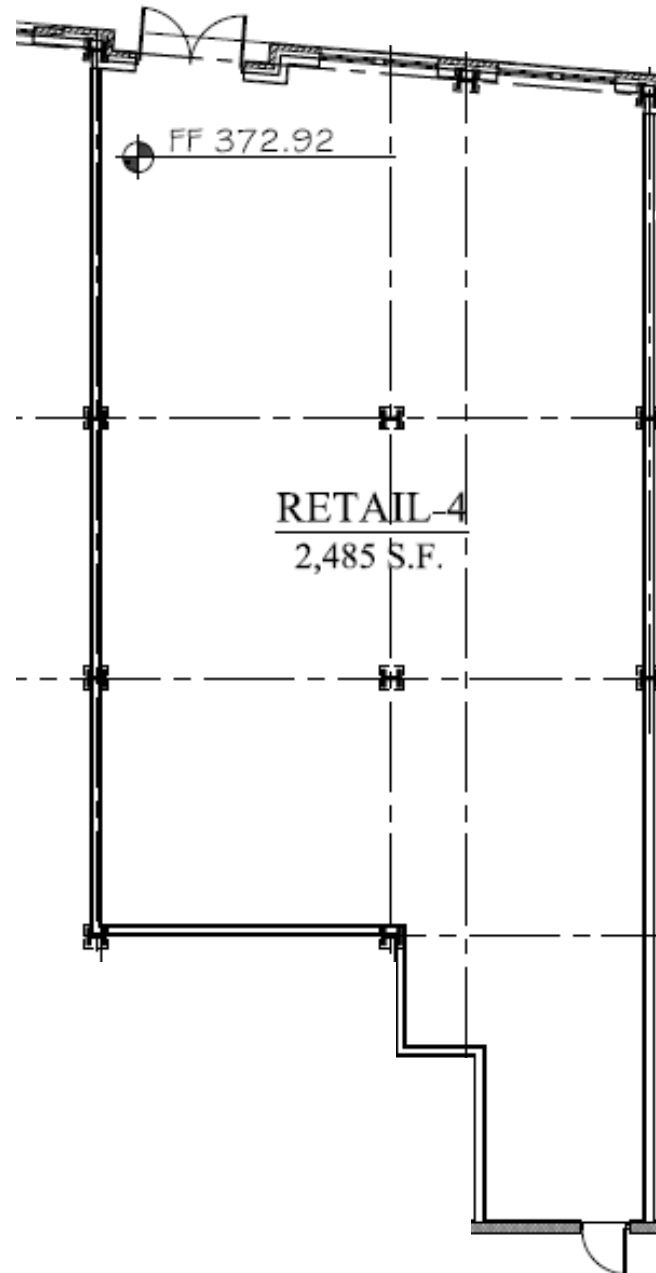
- Located directly on the “Morristown Green”, a two-acre park that is the heart of Morristown
- Close proximity to Headquarters Plaza, Morristown Medical Center, and Morristown Station
- Visibility on The Green – Tenant will have signage on the ground floor level
- Parking supported by the Dalton Parking Garage (677 spaces) immediately adjacent to the building

Asking rent: Upon Request

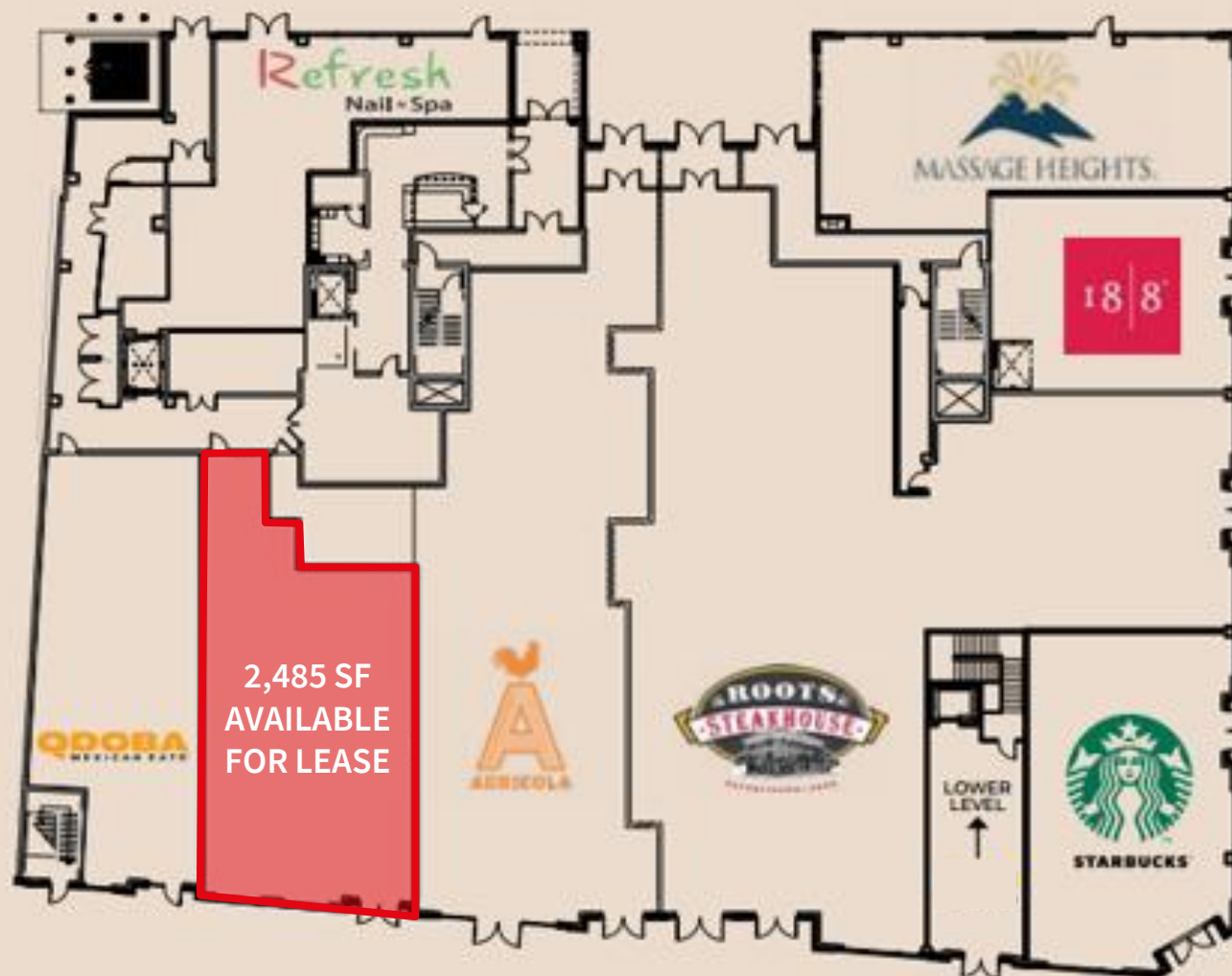
Neighborhood tenants



Floor Plan



Tenant Mix



Market aerial



Neighbors

- Valley National Bank HQ
- Headquarter Plaza
- Hyatt Regency
- Gensler
- Morristown Courthouse
- Deloitte
- M Station
- Maya Performing Center

Morristown currently has a supply of **4,423** multi family units, with over **950** more in the pipeline

Demographics



57,416
Population



\$139,880
Med. HH Income



56,926
Employees



6,212
Businesses

Demographics taken within 3 miles Source: CoStar 2024



For More Information:

Craig Parcells

Senior Vice President
craig.parcells@jll.com

M: +1 201 618 7223

Madeline Voorhees

Sales Coordinator
madeline.voorhees@jll.com

M: +1 908 255 3722

 **JLL** SEE A BRIGHTER WAY
jll.com