

2461 IORIO STREET UNION, NEW JERSEY

IOS 10,200 SF
ON 2.5 AC
Industrial Outdoor Storage



10,200 SF ON 2.5 AC

INDUSTRIAL DISTRIBUTION

2461
IORIO
STREET
UNION, NEW JERSEY

2461 Iorio Street, Union, NJ 07083 is a ±10,200 SF industrial distribution building with ±2.5 acres of outside storage space.

INQUIRE FOR PRICING

CONTACT US

Russell J. Verducci, SIOR
Vice President

201 488 5800 x121
rverducci@naihanson.com

Eric Demmers
Vice President

201 488 5800 x144
edemmers@naihanson.com

Colin Goldstein
Associate

201 488 5800 x154
cgoldstein@naihanson.com

PROPERTY DETAILS

2461
IORIO
STREET
UNION, NEW JERSEY



BUILDING SIZE
10,200 SF



OUTDOOR STORAGE
2.5 ACRES



CEILING HEIGHT
15 FT Clear



POWER
1,400 a
120-280v Heavy



LOADING DOCKS
1 Ext.



DRIVE-INS
4

2461
IORIO
STREET
UNION, NEW JERSEY

PROPERTY PHOTOS



LOCATION AERIAL

NEW YORK

2461 IORIO STREET

UNION, NEW JERSEY



17 MIN TO I-95 Express

Newark Liberty Int'l Airport

Port Newark

10 MIN TO I-78 Express

8 MIN TO GSP

2 MIN TO US HWY 22

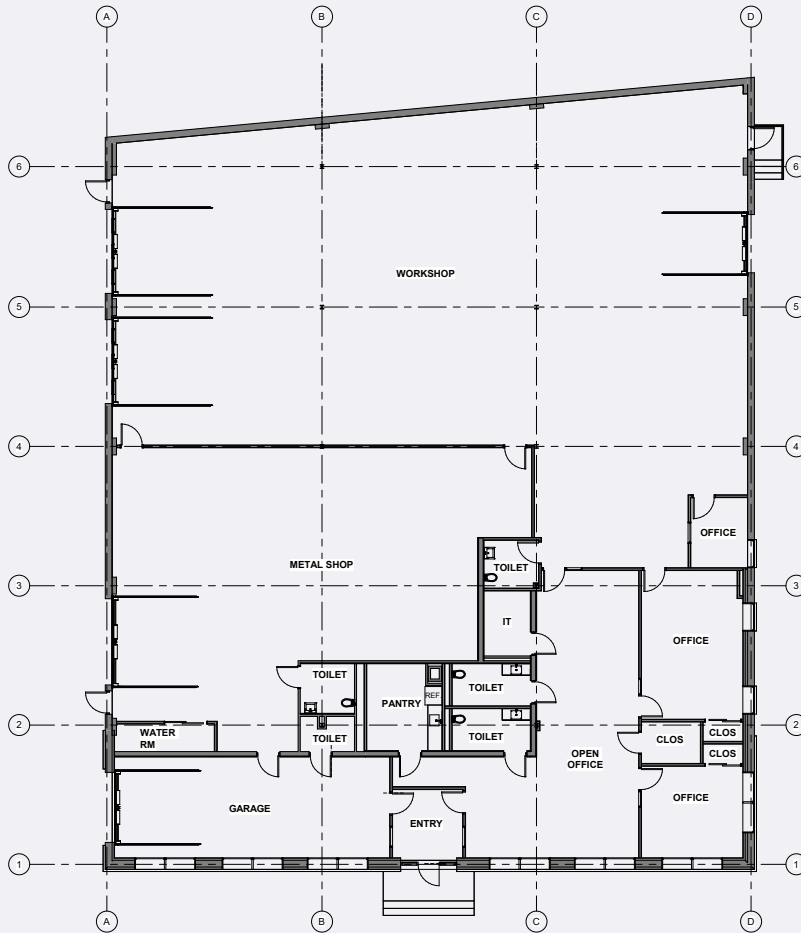
2461 IORIO ST.



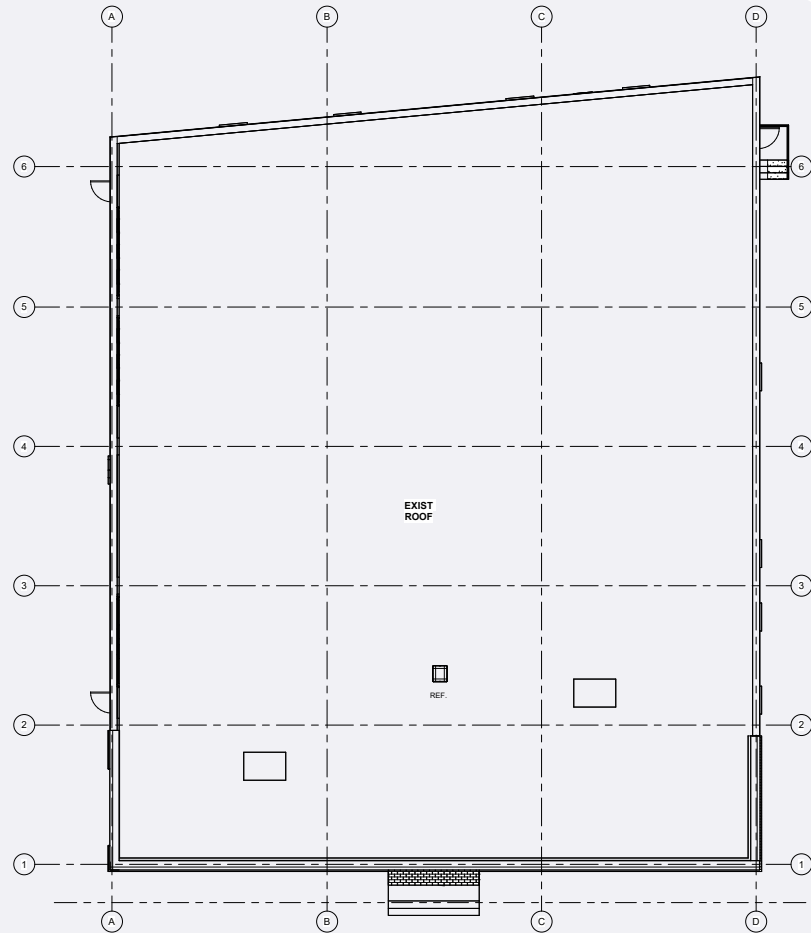
Newark Airport	9.0 miles
Port Newark	11.5 miles
Holland Tunnel	17.4 miles
Lincoln Tunnel	22.0 miles
GW Bridge	27.5 miles

RIDGECUT ROAD

FLOOR PLANS



1 FIRST FLOOR PLAN
SCALE: 1/8" = 1'-0"

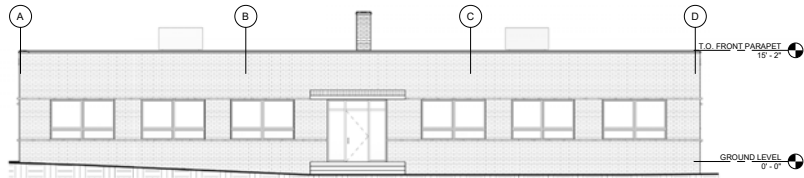


2 ROOF PLAN
SCALE: 1/8" = 1'-0"

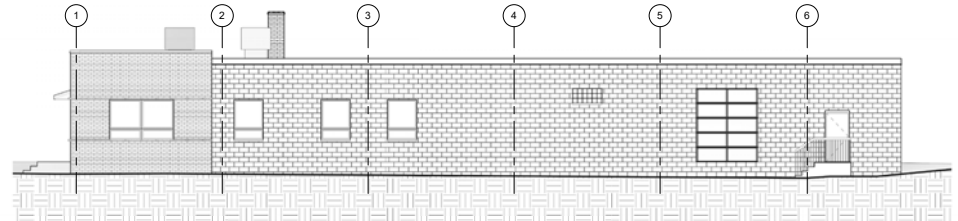


ELEVATION PLANS

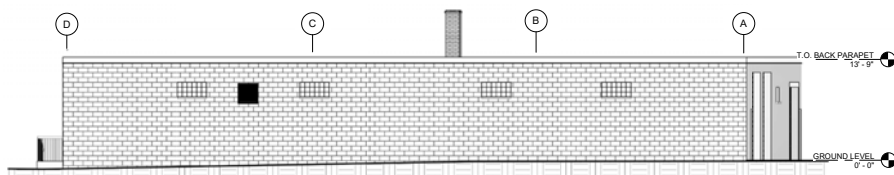
2461
IORIO
STREET
UNION, NEW JERSEY



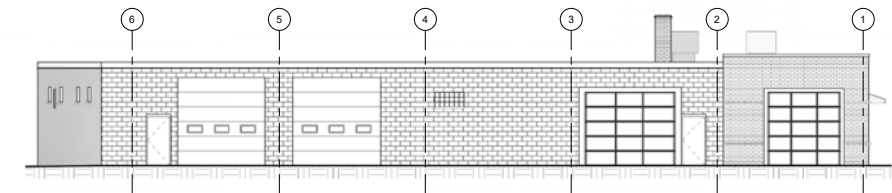
1 SOUTH ELEVATION
SCALE: 1/8" = 1'-0"



4 EAST ELEVATION
SCALE: 1/8" = 1'-0"



3 NORTH ELEVATION
SCALE: 1/8" = 1'-0"



2 WEST ELEVATION
SCALE: 1/8" = 1'-0"

2461
IORIO
STREET
UNION, NEW JERSEY

PERMITTED USES



Contact Us

RIDGECUT
ROAD

Russell J. Verducci, SIOR
Vice President

201 488 5800 x121
rverducci@naihanson.com

Eric Demmers
Vice President

201 488 5800 x144
edemmers@naihanson.com






Colin Goldstein
Associate

201 488 5800 x154
cgoldstein@naihanson.com



NAI James E. Hanson

COMMERCIAL REAL ESTATE SERVICES, WORLDWIDE

FOLLOW US!      | NJ Offices: Teterboro | Parsippany | naihanson.com | Member of NAI Global with 325+ Offices Worldwide

SERVICES OFFERED

Brokerage • Property Management • Corporate Services • Financing • Logistics • Government Services • Healthcare • Tenant Representation • Cold Storage • Investment Services

The information contained herein has been obtained from sources considered to be reliable, but no guarantee of its accuracy is made by NAI James E. Hanson