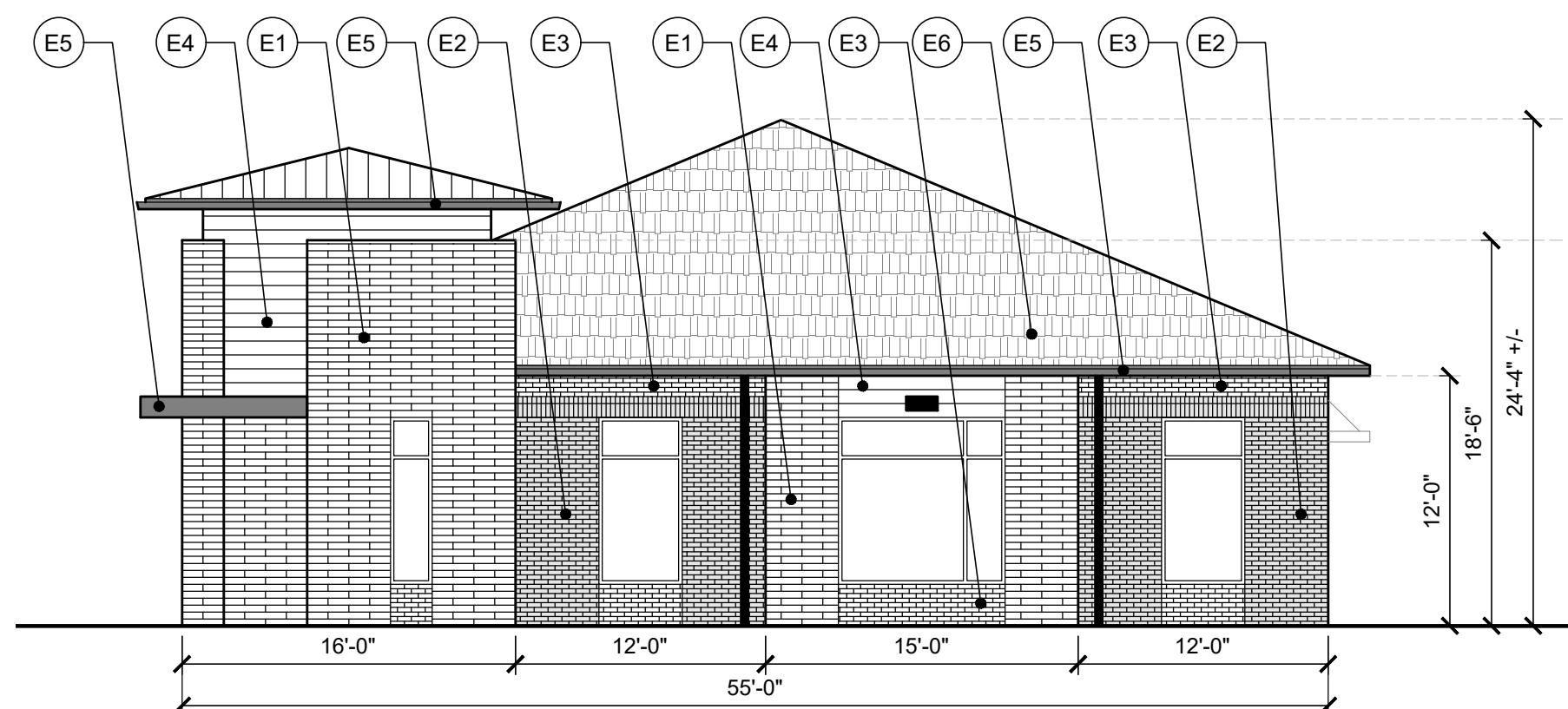


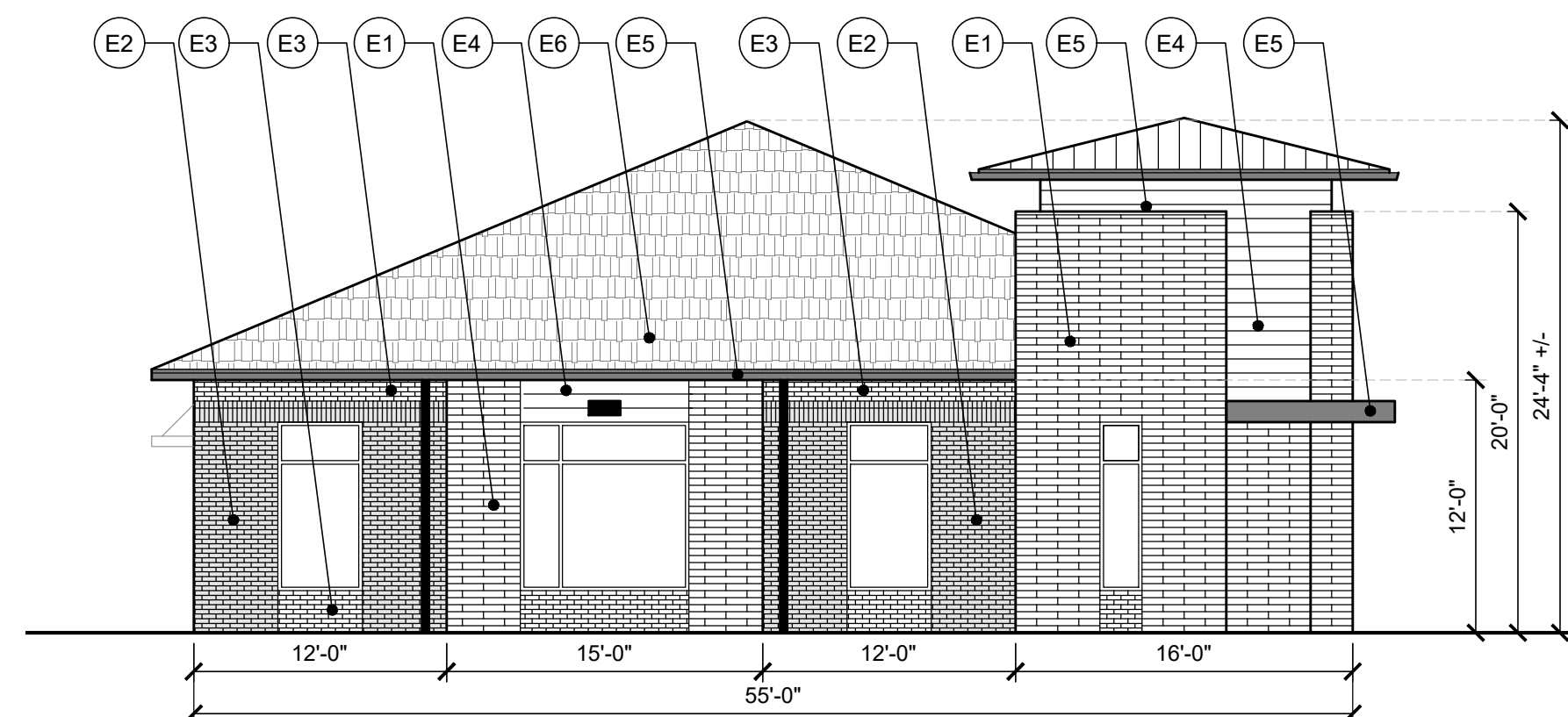
1 BUILDING 1 - EXTERIOR ELEVATION - SOUTH (FRONT)  
scale: 1/8" = 1'-0"

MATERIAL PERCENTAGES	
TOTAL	1769 SF
OPENINGS	592 SF
NET	1177 SF
BRICK	601 SF 51%
STONE	486 SF 41%
FIBER CEMENT	90 SF 8%



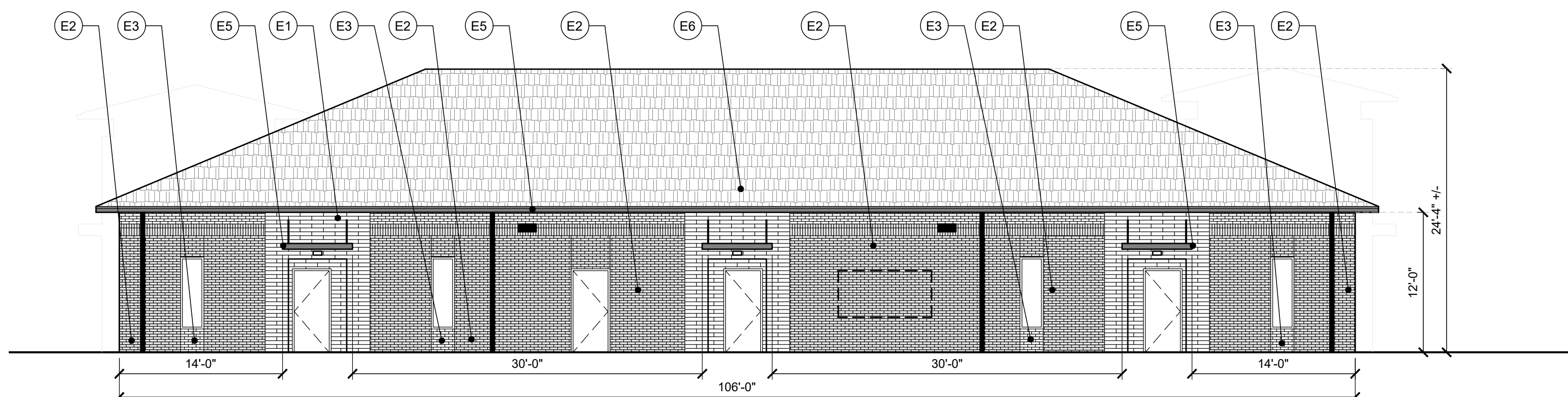
2 BUILDING 1 - EXTERIOR ELEVATION - EAST  
scale: 1/8" = 1'-0"

MATERIAL PERCENTAGES	
TOTAL	785 SF
OPENINGS	144 SF
NET	641 SF
BRICK	248 SF 39%
STONE	330 SF 51%
FIBER CEMENT	63 SF 10%



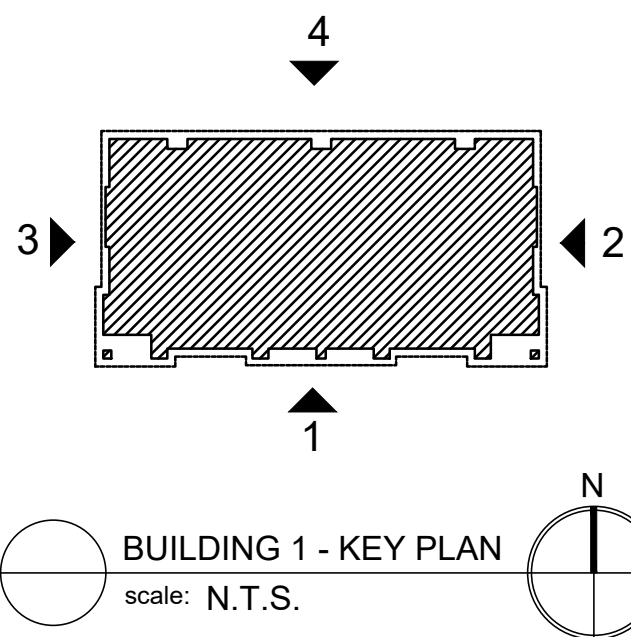
3 BUILDING 1 - EXTERIOR ELEVATION - WEST  
scale: 1/8" = 1'-0"

MATERIAL PERCENTAGES	
TOTAL	809 SF
OPENINGS	144 SF
NET	665 SF
BRICK	248 SF 37%
STONE	348 SF 52%
FIBER CEMENT	69 SF 10%



4 BUILDING 1 - EXTERIOR ELEVATION - NORTH  
scale: 1/8" = 1'-0"

MATERIAL PERCENTAGES	
TOTAL	1272 SF
OPENINGS	145 SF
NET	1127 SF
BRICK	875 SF 78%
STONE	252 SF 22%
FIBER CEMENT	0 SF 0%



BUILDING 1 - KEY PLAN  
scale: N.T.S.

THIS FAÇADE PLAN IS FOR CONCEPTUAL PURPOSES ONLY. ALL BUILDING PLANS REQUIRE REVIEW AND APPROVAL FROM THE BUILDING INSPECTIONS DEPARTMENT. ALL MECHANICAL EQUIPMENT SHALL BE SCREENED FROM PUBLIC VIEW. ROOFTOP MOUNTED EQUIPMENT SHALL BE SCREENED BY A PARAPET WALL OR SCREENING WALL. SCREENING WALLS SHALL BE THE SPECIFICATIONS OF THE ZONING ORDINANCE. WHEN PERMITTED, EXPOSED UTILITY BOXES AND CONDUITS SHALL BE PAINTED TO MATCH THE BUILDING. ALL SIGNAGE AREAS AND LOCATIONS ARE SUBJECT TO APPROVAL BY THE BUILDING INSPECTIONS DEPARTMENT. WINDOWS SHALL HAVE A MAXIMUM EXTERIOR VISIBLE REFLECTIVITY OF TEN (10) PERCENT. ANY DEVIATION FROM THE APPROVED FAÇADE PLAN WILL REQUIRE RE-APPROVAL BY THE TOWN OF PROSPER.

ISSUE BLOCK	

DOC. DATE: 01/20/2022

NOT FOR REGULATORY  
APPROVAL, PERMITTING, OR  
CONSTRUCTION

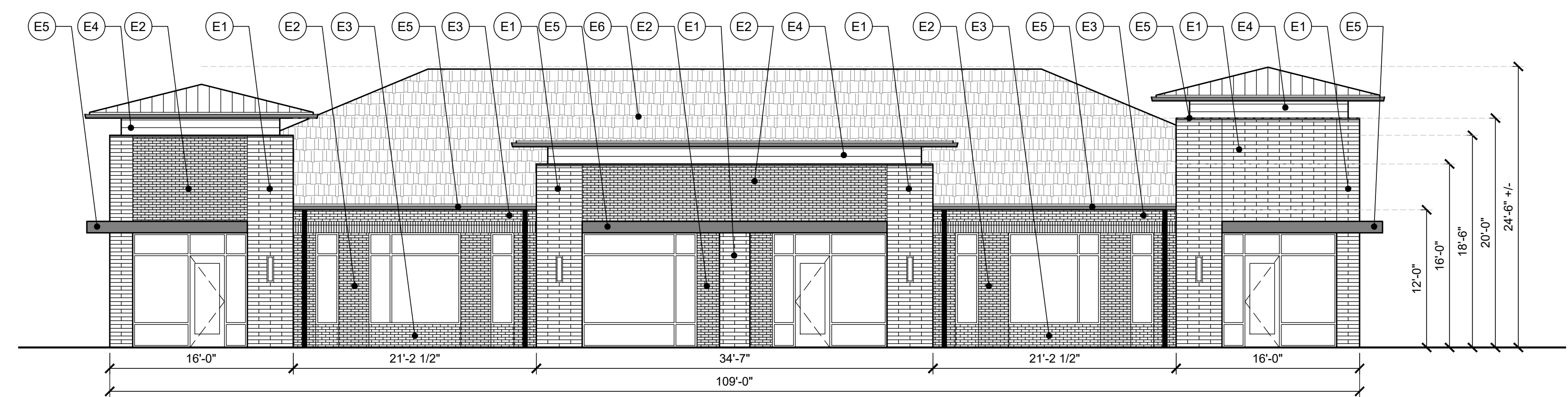
KRIS CALVERT, AIA  
01 / 20 / 2022

EXTERIOR  
ELEVATIONS  
BUILDING 1

A3.11

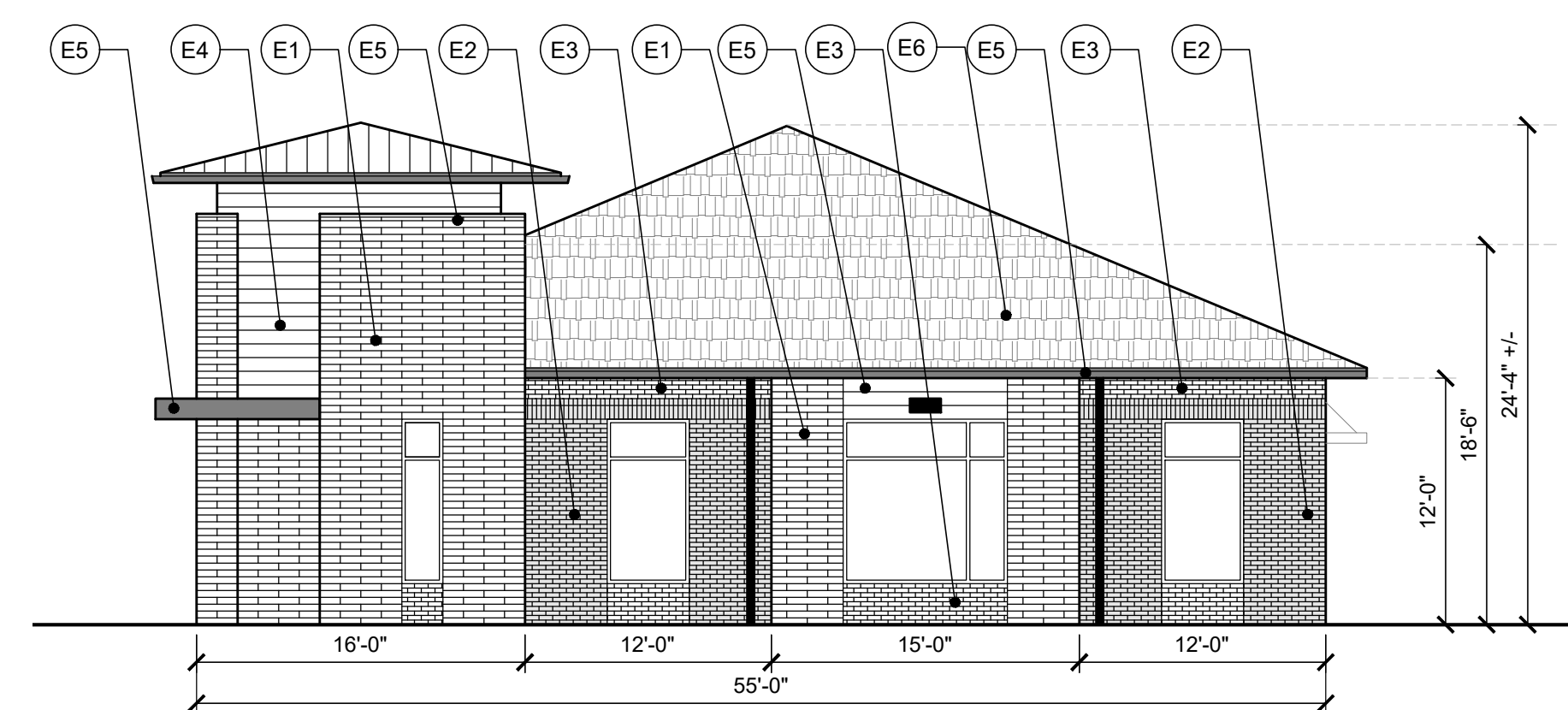
MATERIAL LEGEND			
MARK	LOCATION	MATERIAL	FINISH / NOTE
E1	PRIMARY FAÇADE	STONE VENEER	CORDOVA STONE, WHITE
E2	PRIMARY FAÇADE	BRICK VENEER	CHARCOAL GRAY
E3	ACCENT FAÇADE	BRICK VENEER	WHITE
E4	ACCENT FAÇADE	FIBER CEMENT PANEL	NICHIHA 'SPRUCE'
E5	CANOPY/COPING/GUTTER/DOWNSPOUT	METAL	BLACK
E6	ROOF	COMPOSITION SHINGLE	GAF SLATLINE 'ROYAL SLATE'
E7	FUTURE SIGNAGE	TBD	

CASE NUMBER ---,---



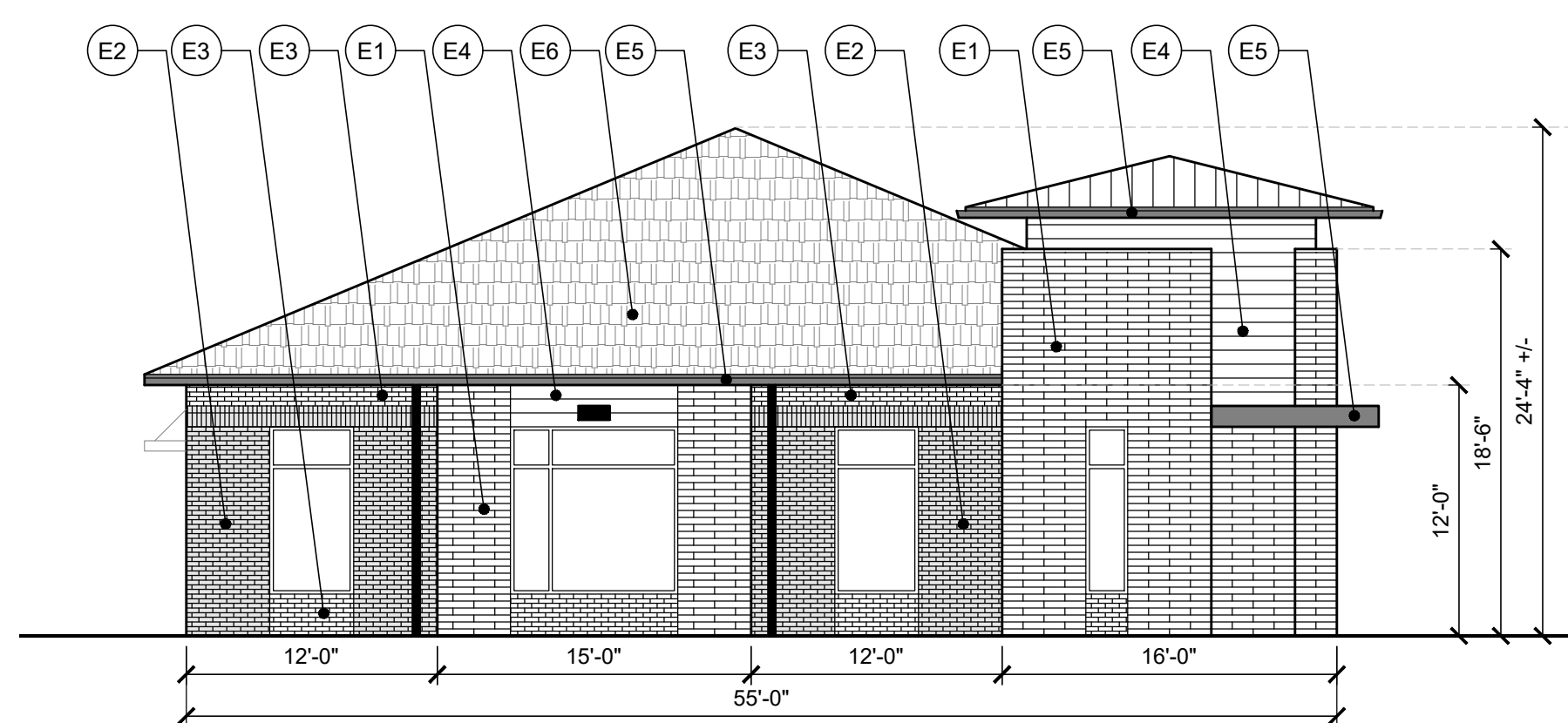
**1 BUILDING 2 - EXTERIOR ELEVATION - SOUTH (FRONT)**  
scale: 1/8" = 1'-0"

MATERIAL PERCENTAGES	
TOTAL	1769 SF
OPENINGS	592 SF
NET	1177 SF
BRICK	601 SF 51%
STONE	486 SF 41%
FIBER CEMENT	90 SF 8%



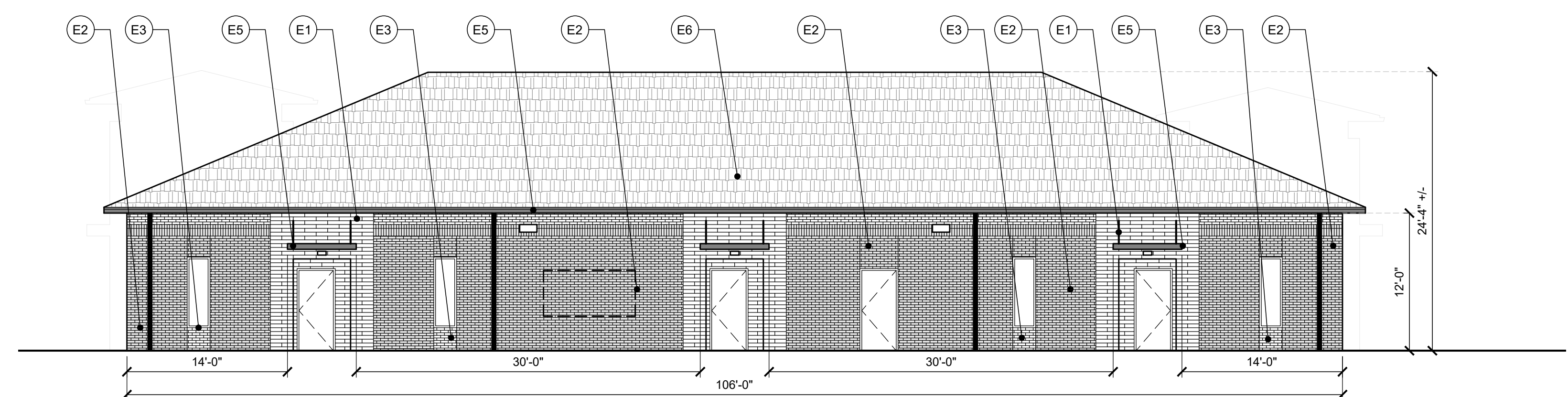
**2 BUILDING 2 - EXTERIOR ELEVATION - EAST**  
scale: 1/8" = 1'-0"

MATERIAL PERCENTAGES	
TOTAL	809 SF
OPENINGS	144 SF
NET	665 SF
BRICK	256 SF 39%
STONE	348 SF 51%
FIBER CEMENT	61 SF 10%



**3 BUILDING 2 - EXTERIOR ELEVATION - WEST**  
scale: 1/8" = 1'-0"

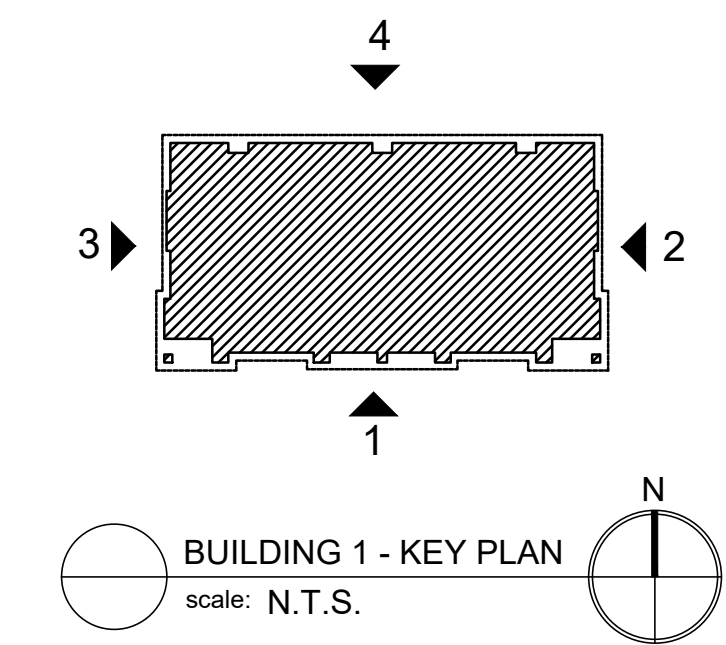
MATERIAL PERCENTAGES	
TOTAL	785 SF
OPENINGS	144 SF
NET	641 SF
BRICK	256 SF 37%
STONE	330 SF 52%
FIBER CEMENT	55 SF 10%



**4 BUILDING 2 - EXTERIOR ELEVATION - NORTH**  
scale: 1/8" = 1'-0"

MATERIAL PERCENTAGES	
TOTAL	1272 SF
OPENINGS	145 SF
NET	1127 SF
BRICK	875 SF 78%
STONE	252 SF 22%
FIBER CEMENT	0 SF 0%

THIS FAÇADE PLAN IS FOR CONCEPTUAL PURPOSES ONLY. ALL BUILDING PLANS REQUIRE REVIEW AND APPROVAL FROM THE BUILDING INSPECTIONS DEPARTMENT. ALL MECHANICAL EQUIPMENT SHALL BE SCREENED FROM PUBLIC VIEW. ROOFTOP MOUNTED EQUIPMENT SHALL BE SCREENED BY A PARAPET WALL OR SCREENING WALL. SCREENING WALLS SHALL BE THE SPECIFICATIONS OF THE ZONING ORDINANCE. WHEN PERMITTED, EXPOSED UTILITY BOXES AND CONDUITS SHALL BE PAINTED TO MATCH THE BUILDING. ALL SIGNAGE AREAS AND LOCATIONS ARE SUBJECT TO APPROVAL BY THE BUILDING INSPECTIONS DEPARTMENT. WINDOWS SHALL HAVE A MAXIMUM EXTERIOR VISIBLE REFLECTIVITY OF TEN (10) PERCENT. ANY DEVIATION FROM THE APPROVED FAÇADE PLAN WILL REQUIRE RE-APPROVAL BY THE TOWN OF PROSPER.



MATERIAL LEGEND			
MARK	LOCATION	MATERIAL	FINISH / NOTE
E1	PRIMARY FAÇADE	STONE VENEER	CORDOVA STONE, WHITE
E2	PRIMARY FAÇADE	BRICK VENEER	CHARCOAL GRAY
E3	ACCENT FAÇADE	BRICK VENEER	WHITE
E4	ACCENT FAÇADE	FIBER CEMENT PANEL	NICHIHA 'SPRUCE'
E5	CANOPY/COPING/GUTTER/DOWNSPOUT	METAL	BLACK
E6	ROOF	COMPOSITION SHINGLE	GAF SLATLINE 'ROYAL SLATE'
E7	FUTURE SIGNAGE	TBD	

CASE NUMBER ---,---

SHELL BUILDINGS  
PROSPER, TX

TOWN PROJECT NUMBER

JOB NUMBER: 20-104.03

ISSUE BLOCK	

DOC. DATE: 01/20/2022

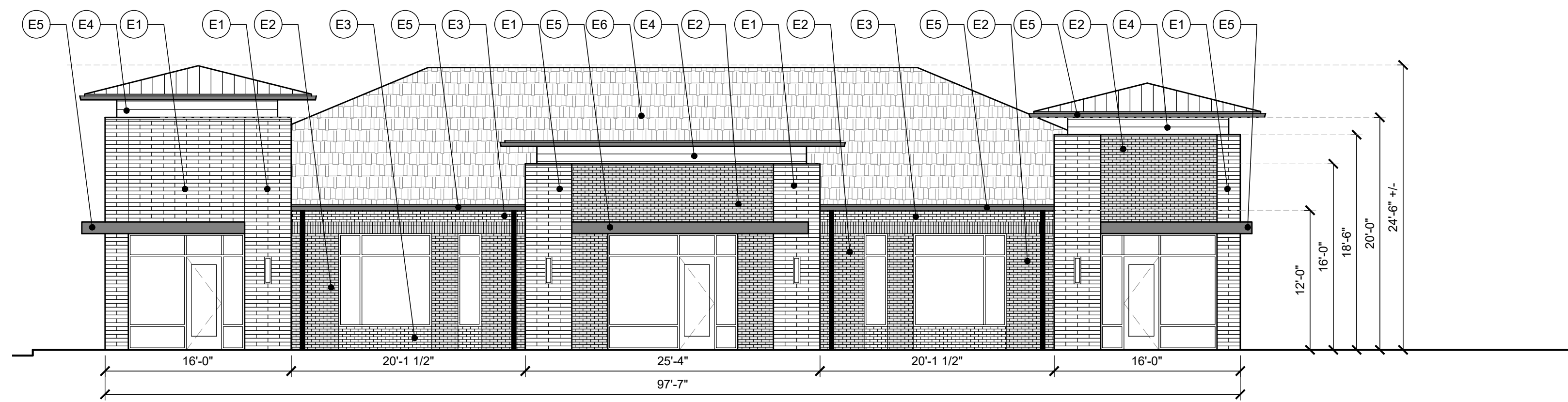
NOT FOR REGULATORY APPROVAL, PERMITTING, OR CONSTRUCTION

KRIS CALVERT, AIA  
01 / 20 / 2022

EXTERIOR ELEVATIONS  
BUILDING 2

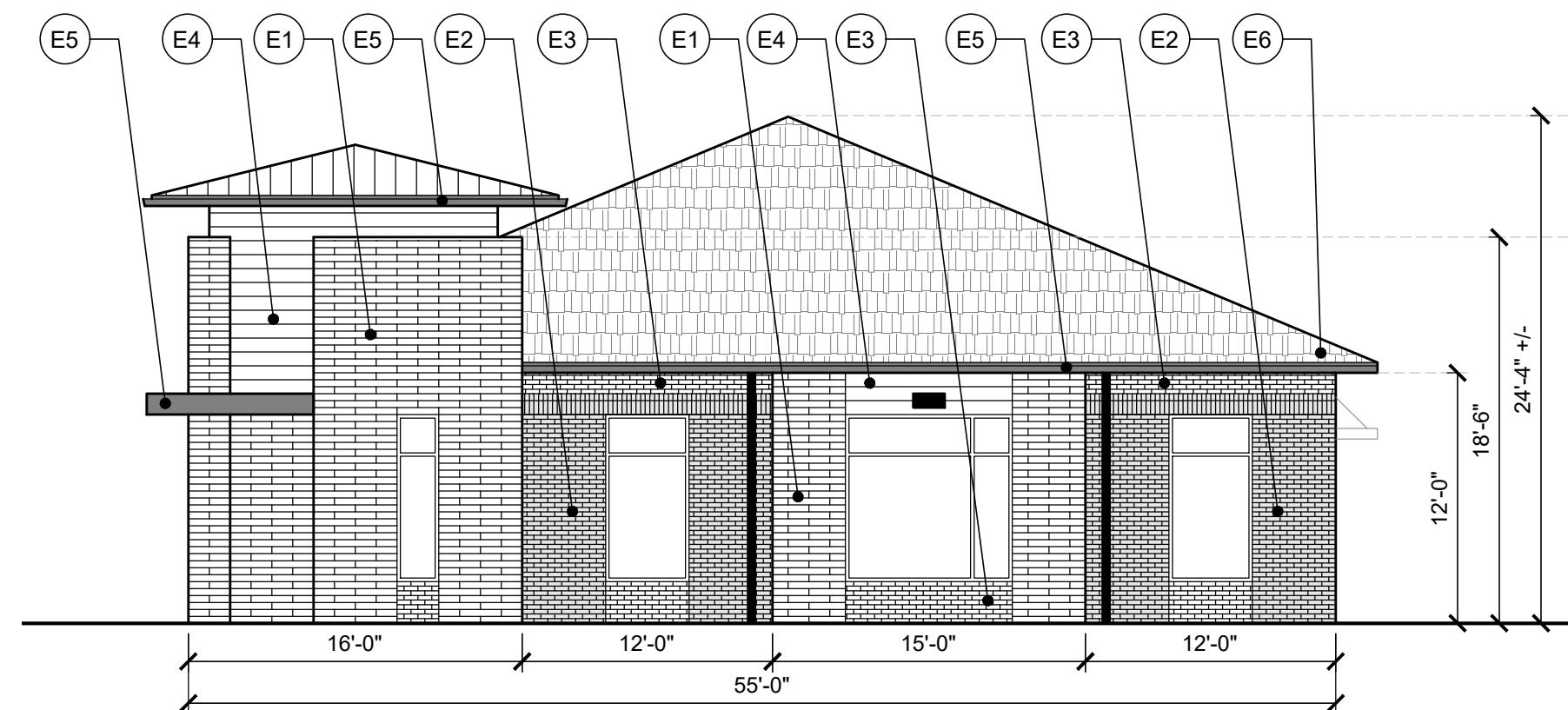
A3.12





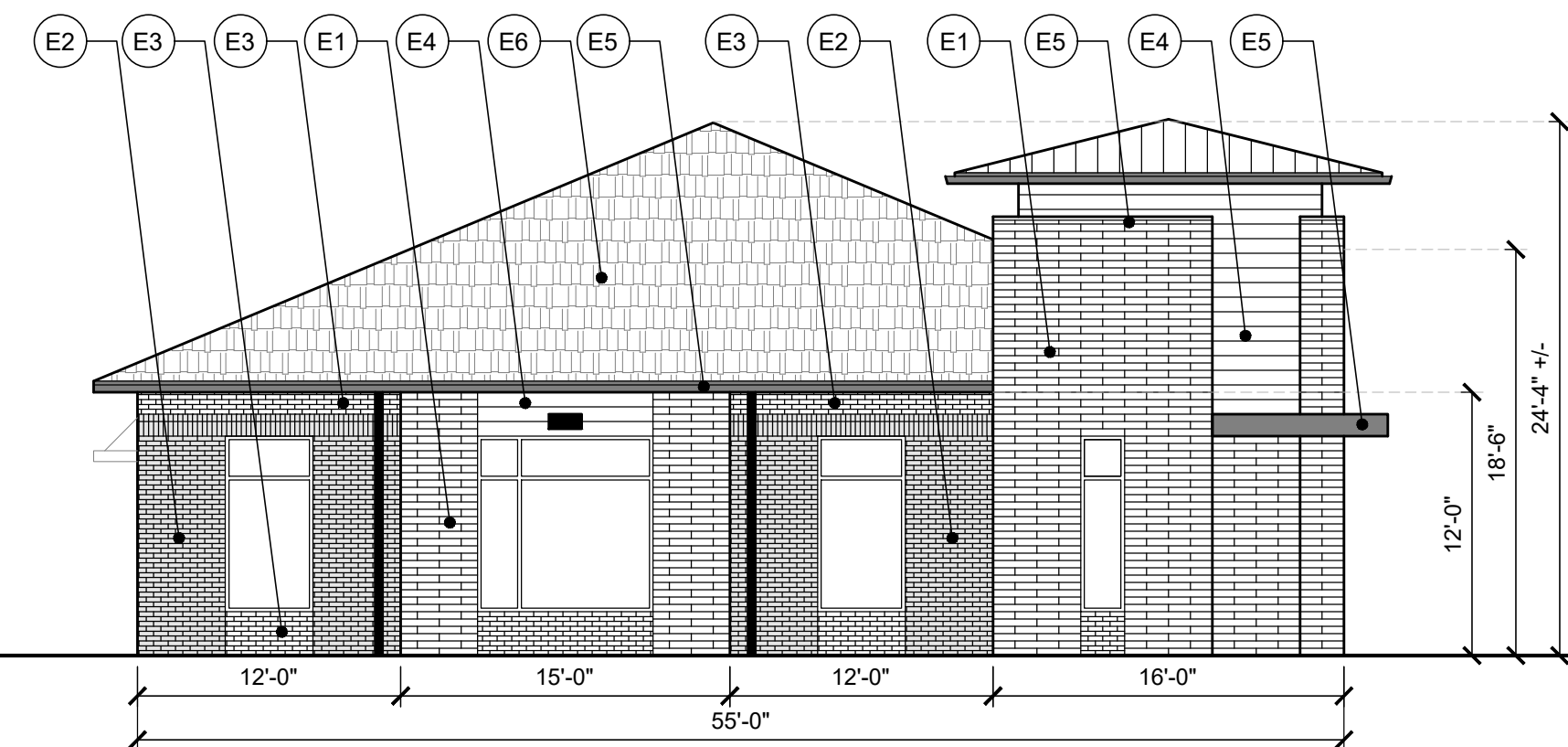
1 BUILDING 3 - EXTERIOR ELEVATION - SOUTH (FRONT)  
scale: 1/8" = 1'-0"

MATERIAL PERCENTAGES	
TOTAL	1581 SF
OPENINGS	472 SF
NET	1109 SF
BRICK	574 SF 52%
STONE	459 SF 41%
FIBER CEMENT	76 SF 7%



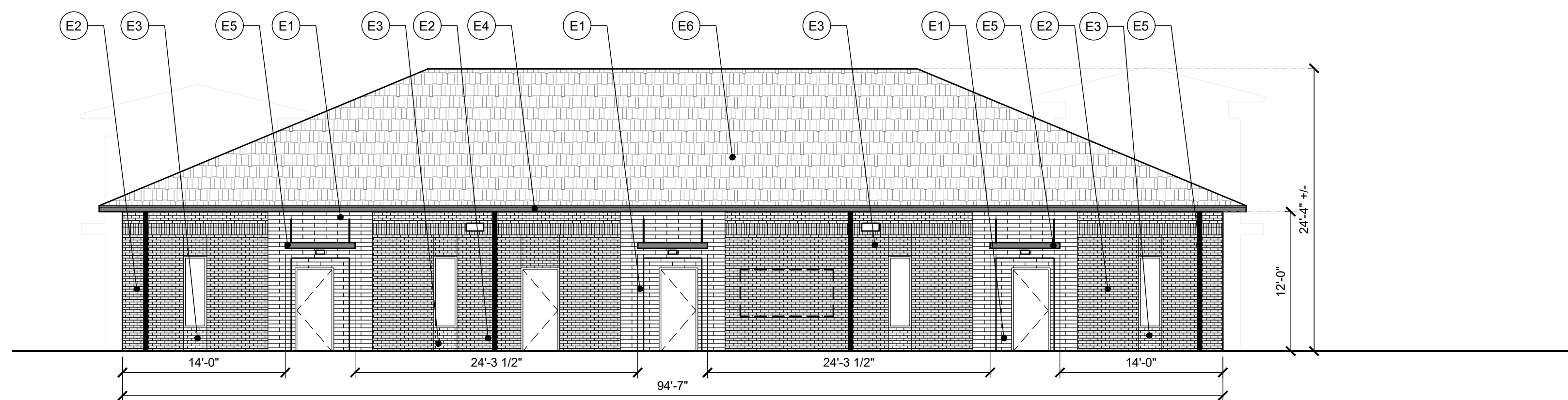
2 BUILDING 3 - EXTERIOR ELEVATION - EAST  
scale: 1/8" = 1'-0"

MATERIAL PERCENTAGES	
TOTAL	785 SF
OPENINGS	144 SF
NET	641 SF
BRICK	256 SF 39%
STONE	330 SF 51%
FIBER CEMENT	55 SF 10%



3 BUILDING 3 - EXTERIOR ELEVATION - WEST  
scale: 1/8" = 1'-0"

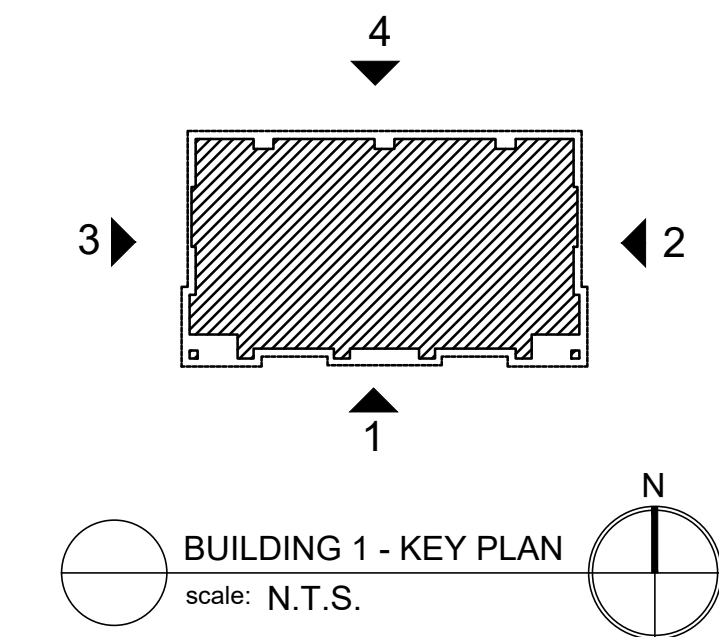
MATERIAL PERCENTAGES	
TOTAL	809 SF
OPENINGS	144 SF
NET	665 SF
BRICK	256 SF 37%
STONE	348 SF 52%
FIBER CEMENT	61 SF 10%



4 BUILDING 3 - EXTERIOR ELEVATION - NORTH  
scale: 1/8" = 1'-0"

MATERIAL PERCENTAGES	
TOTAL	1135 SF
OPENINGS	145 SF
NET	990 SF
BRICK	738 SF 75%
STONE	252 SF 25%
FIBER CEMENT	0 SF 0%

THIS FAÇADE PLAN IS FOR CONCEPTUAL PURPOSES ONLY. ALL BUILDING PLANS REQUIRE REVIEW AND APPROVAL FROM THE BUILDING INSPECTIONS DEPARTMENT. ALL MECHANICAL EQUIPMENT SHALL BE SCREENED FROM PUBLIC VIEW. ROOFTOP MOUNTED EQUIPMENT SHALL BE SCREENED BY A PARAPET WALL OR SCREENING WALL. SCREENING WALLS SHALL BE THE SPECIFICATIONS OF THE ZONING ORDINANCE. WHEN PERMITTED, EXPOSED UTILITY BOXES AND CONDUITS SHALL BE PAINTED TO MATCH THE BUILDING. ALL SIGNAGE AREAS AND LOCATIONS ARE SUBJECT TO APPROVAL BY THE BUILDING INSPECTIONS DEPARTMENT. WINDOWS SHALL HAVE A MAXIMUM EXTERIOR VISIBLE REFLECTIVITY OF TEN (10) PERCENT. ANY DEVIATION FROM THE APPROVED FAÇADE PLAN WILL REQUIRE RE-APPROVAL BY THE TOWN OF PROSPER.



MATERIAL LEGEND			
MARK	LOCATION	MATERIAL	FINISH / NOTE
E1	PRIMARY FAÇADE	STONE VENEER	CORDOVA STONE, WHITE
E2	PRIMARY FAÇADE	BRICK VENEER	CHARCOAL GRAY
E3	ACCENT FAÇADE	BRICK VENEER	WHITE
E4	ACCENT FAÇADE	FIBER CEMENT PANEL	NICHIHA 'SPRUCE'
E5	CANOPY/COPING/GUTTER/DOWNSPOUT	METAL	BLACK
E6	ROOF	COMPOSITION SHINGLE	GAF SLATELINE 'ROYAL SLATE' GRAY
E7	FUTURE SIGNAGE	TBD	

CASE NUMBER ---,---

ISSUE BLOCK	

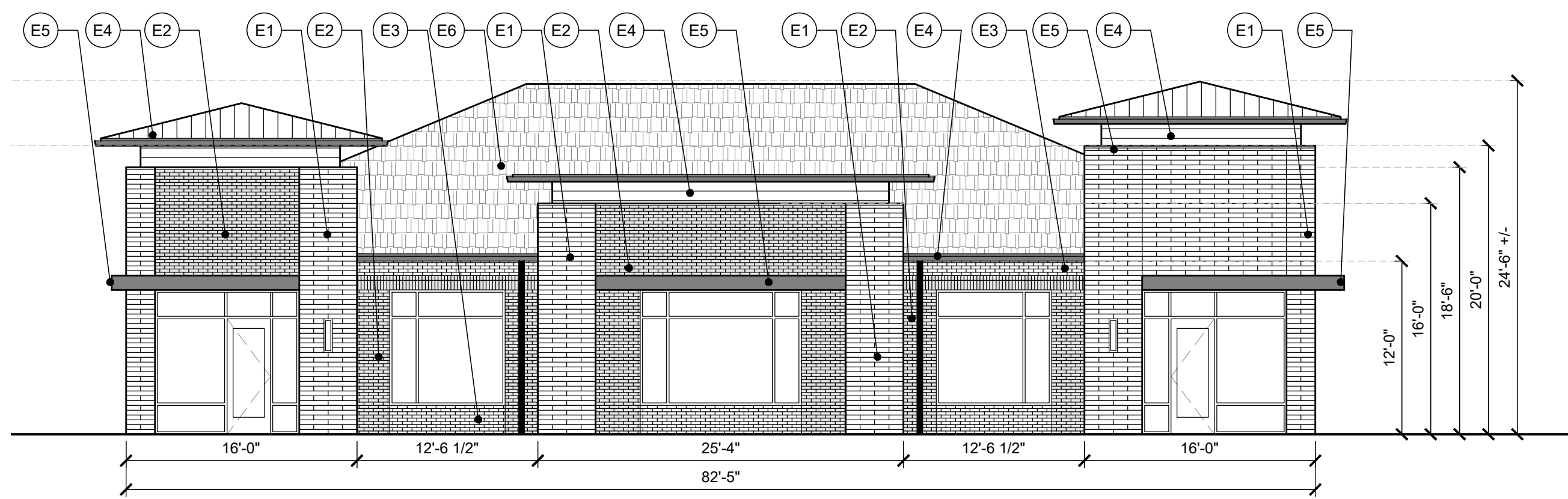
DOC. DATE: 01/20/2022

NOT FOR REGULATORY APPROVAL, PERMITTING, OR CONSTRUCTION

KRIS CALVERT, AIA  
01 / 20 / 2022

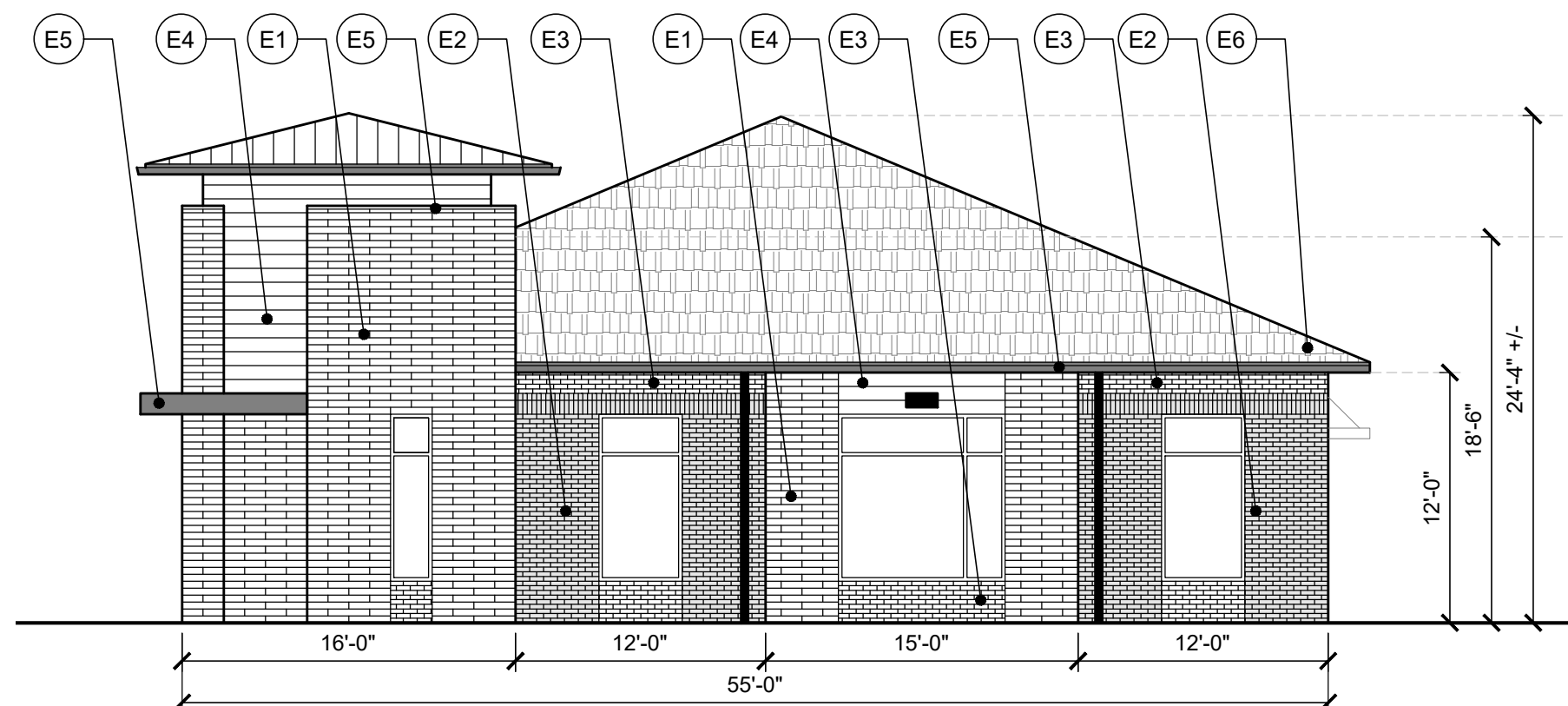
EXTERIOR ELEVATIONS  
BUILDING 3

A3.13



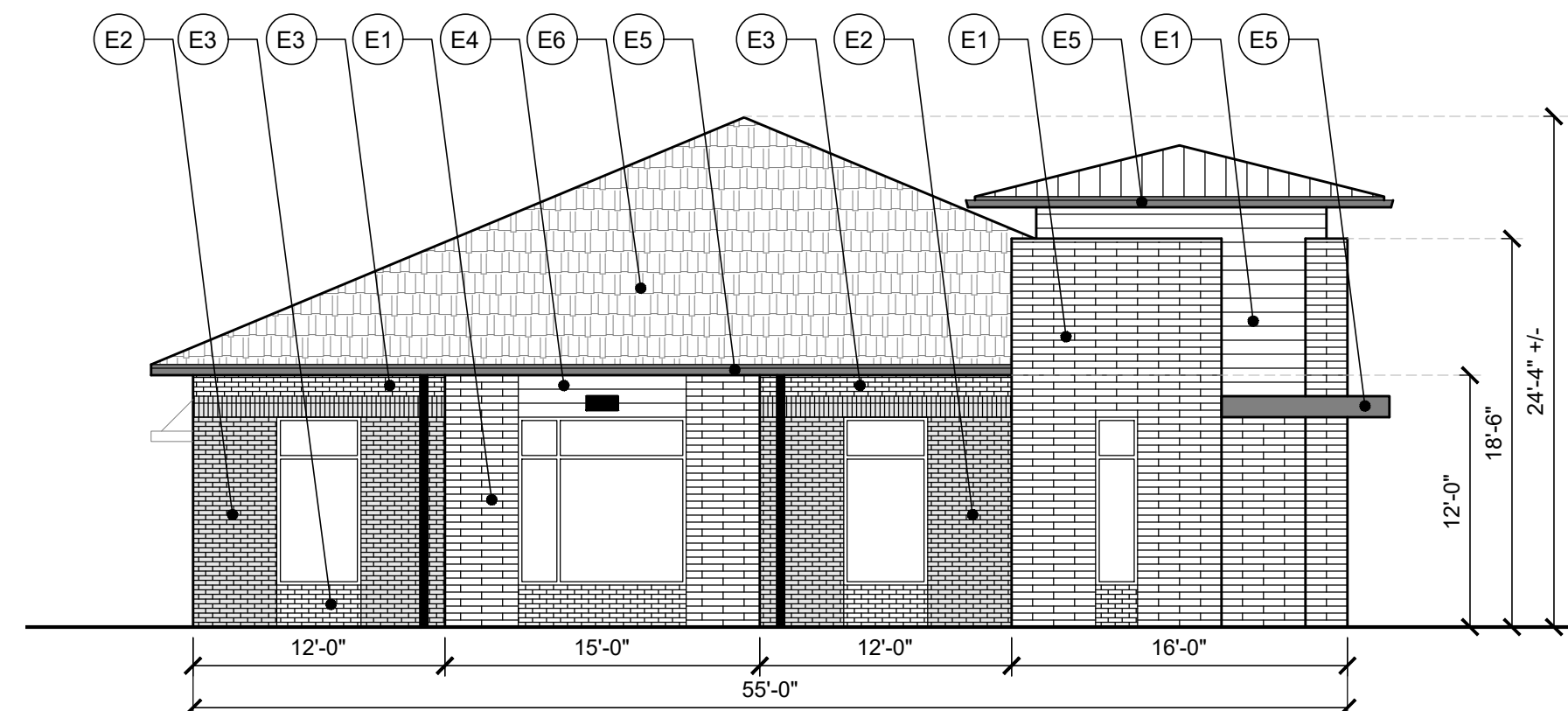
1 BUILDING 4 - EXTERIOR ELEVATION - SOUTH (FRONT)  
scale: 1/8" = 1'-0"

MATERIAL PERCENTAGES	
TOTAL	1399 SF
OPENINGS	440 SF
NET	959 SF
BRICK	439 SF 46%
STONE	444 SF 46%
FIBER CEMENT	76 SF 8%



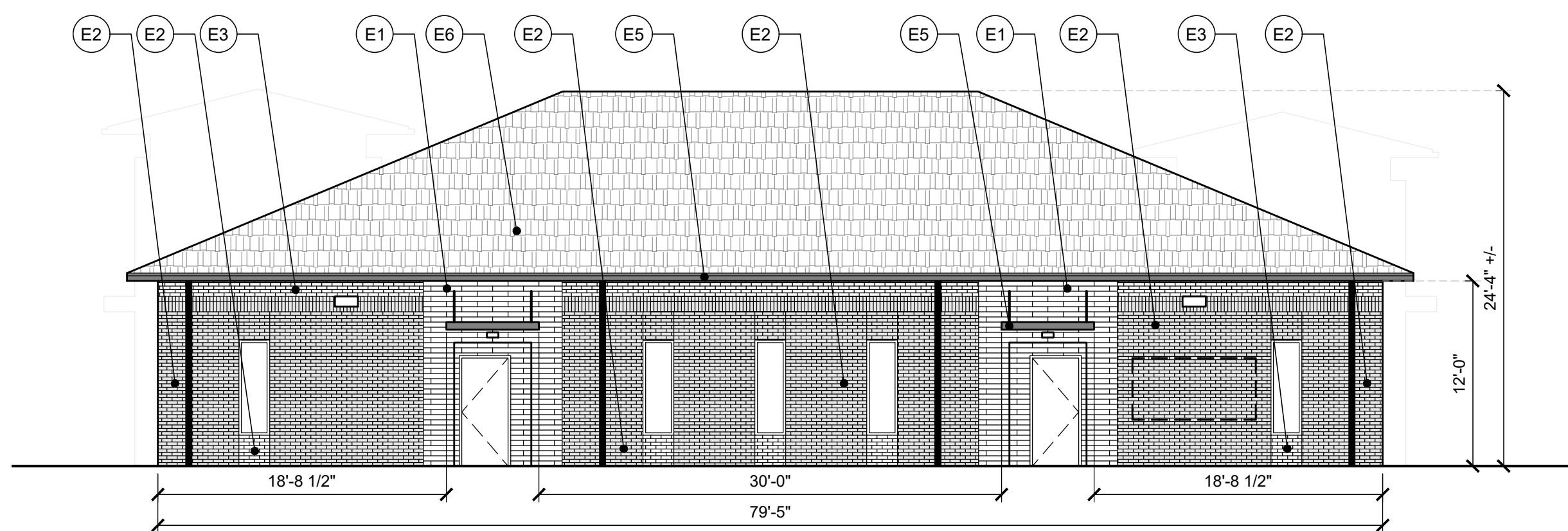
2 BUILDING 4 - EXTERIOR ELEVATION - EAST  
scale: 1/8" = 1'-0"

MATERIAL PERCENTAGES	
TOTAL	809 SF
OPENINGS	144 SF
NET	665 SF
BRICK	256 SF 39%
STONE	348 SF 51%
FIBER CEMENT	61 SF 10%



3 BUILDING 4 - EXTERIOR ELEVATION - WEST  
scale: 1/8" = 1'-0"

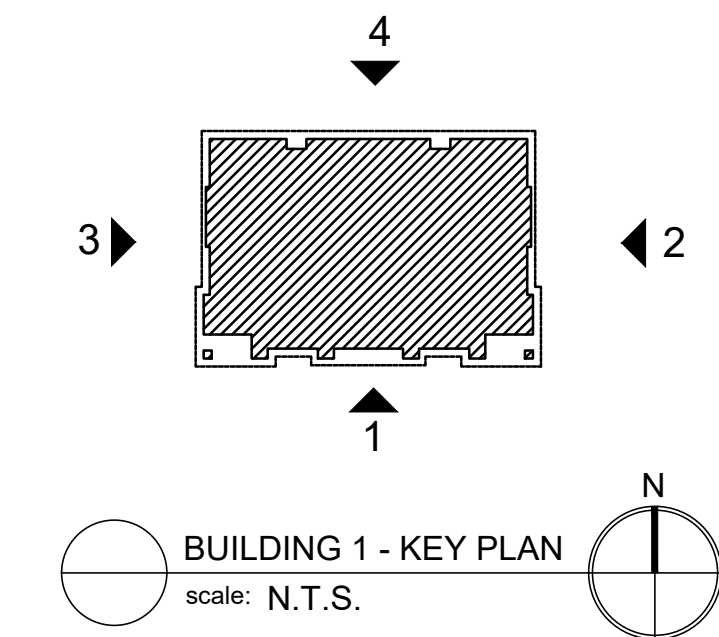
MATERIAL PERCENTAGES	
TOTAL	785 SF
OPENINGS	144 SF
NET	641 SF
BRICK	256 SF 37%
STONE	330 SF 52%
FIBER CEMENT	55 SF 10%



4 BUILDING 4 - EXTERIOR ELEVATION - NORTH  
scale: 1/8" = 1'-0"

MATERIAL PERCENTAGES	
TOTAL	953 SF
OPENINGS	109 SF
NET	844 SF
BRICK	675 SF 80%
STONE	168 SF 20%
FIBER CEMENT	0 SF 0%

THIS FAÇADE PLAN IS FOR CONCEPTUAL PURPOSES ONLY. ALL BUILDING PLANS REQUIRE REVIEW AND APPROVAL FROM THE BUILDING INSPECTIONS DEPARTMENT. ALL MECHANICAL EQUIPMENT SHALL BE SCREENED FROM PUBLIC VIEW. ROOFTOP MOUNTED EQUIPMENT SHALL BE SCREENED BY A PARAPET WALL OR SCREENING WALL. SCREENING WALLS SHALL BE THE SPECIFICATIONS OF THE ZONING ORDINANCE. WHEN PERMITTED, EXPOSED UTILITY BOXES AND CONDUITS SHALL BE PAINTED TO MATCH THE BUILDING. ALL SIGNAGE AREAS AND LOCATIONS ARE SUBJECT TO APPROVAL BY THE BUILDING INSPECTIONS DEPARTMENT. WINDOWS SHALL HAVE A MAXIMUM EXTERIOR VISIBLE REFLECTIVITY OF TEN (10) PERCENT. ANY DEVIATION FROM THE APPROVED FAÇADE PLAN WILL REQUIRE RE-APPROVAL BY THE TOWN OF PROSPER.



MATERIAL LEGEND			
MARK	LOCATION	MATERIAL	FINISH / NOTE
E1	PRIMARY FAÇADE	STONE VENEER	CORDOVA STONE, WHITE
E2	PRIMARY FAÇADE	BRICK VENEER	CHARCOAL GRAY
E3	ACCENT FAÇADE	BRICK VENEER	WHITE
E4	ACCENT FAÇADE	FIBER CEMENT PANEL	NICHIHA 'SPRUCE'
E5	CANOPY/COPING/GUTTER/DOWNSPOUT	METAL	BLACK
E6	ROOF	COMPOSITION SHINGLE	GAF SLATLINE 'ROYAL SLATE'
E7	FUTURE SIGNAGE	TBD	

CASE NUMBER ---,---

ISSUE BLOCK	

DOC. DATE: 01/20/2022

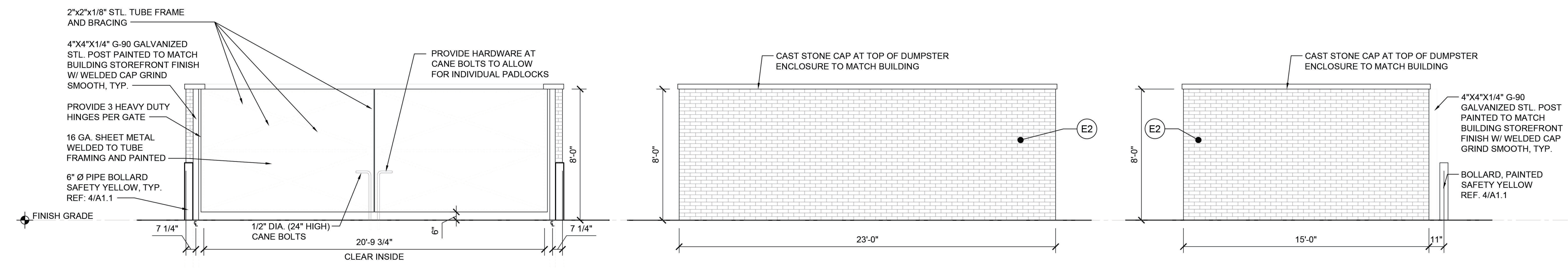
NOT FOR REGULATORY APPROVAL, PERMITTING, OR CONSTRUCTION

KRIS CALVERT, AIA  
01 / 20 / 2022

EXTERIOR ELEVATIONS  
BUILDING 4

A3.14

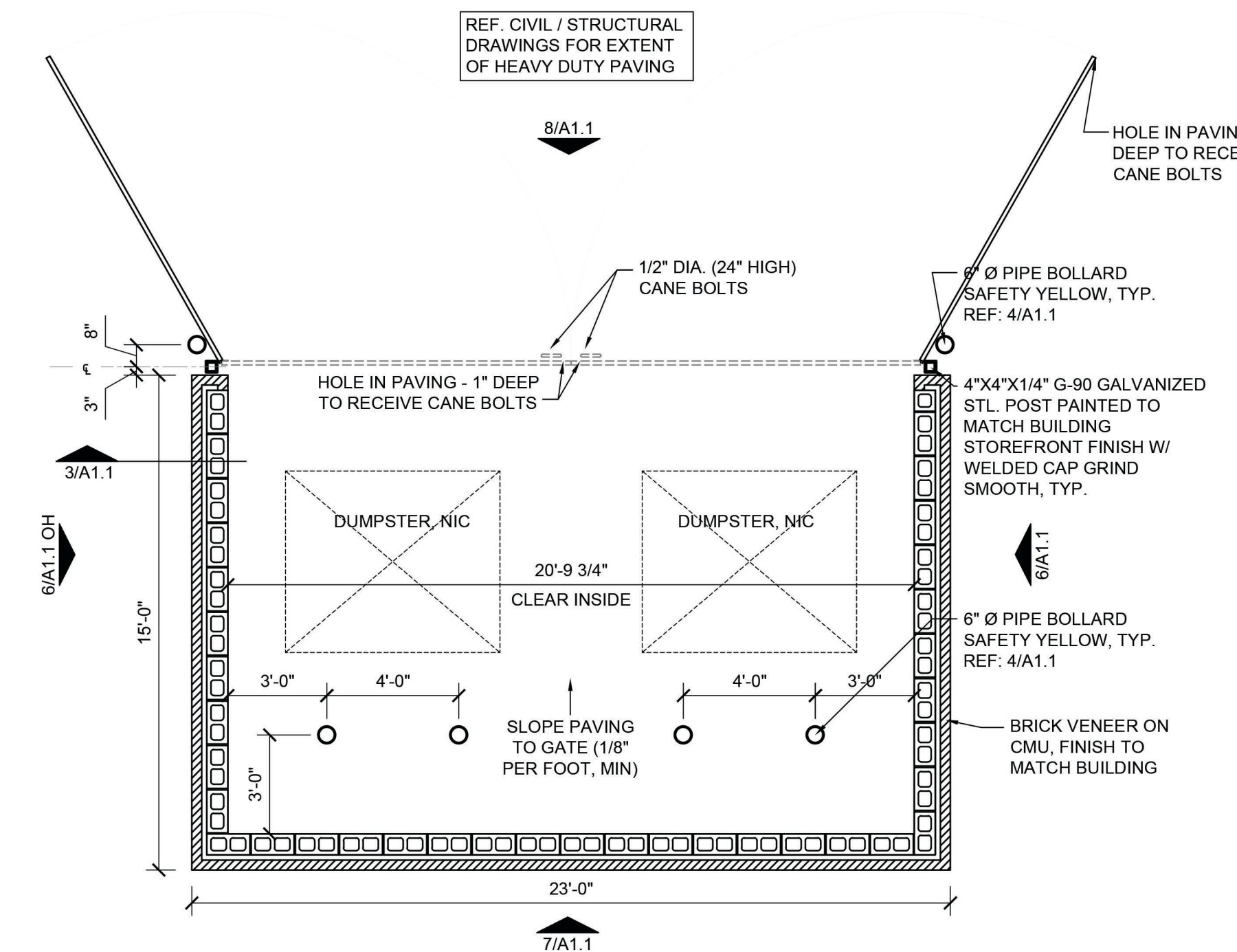




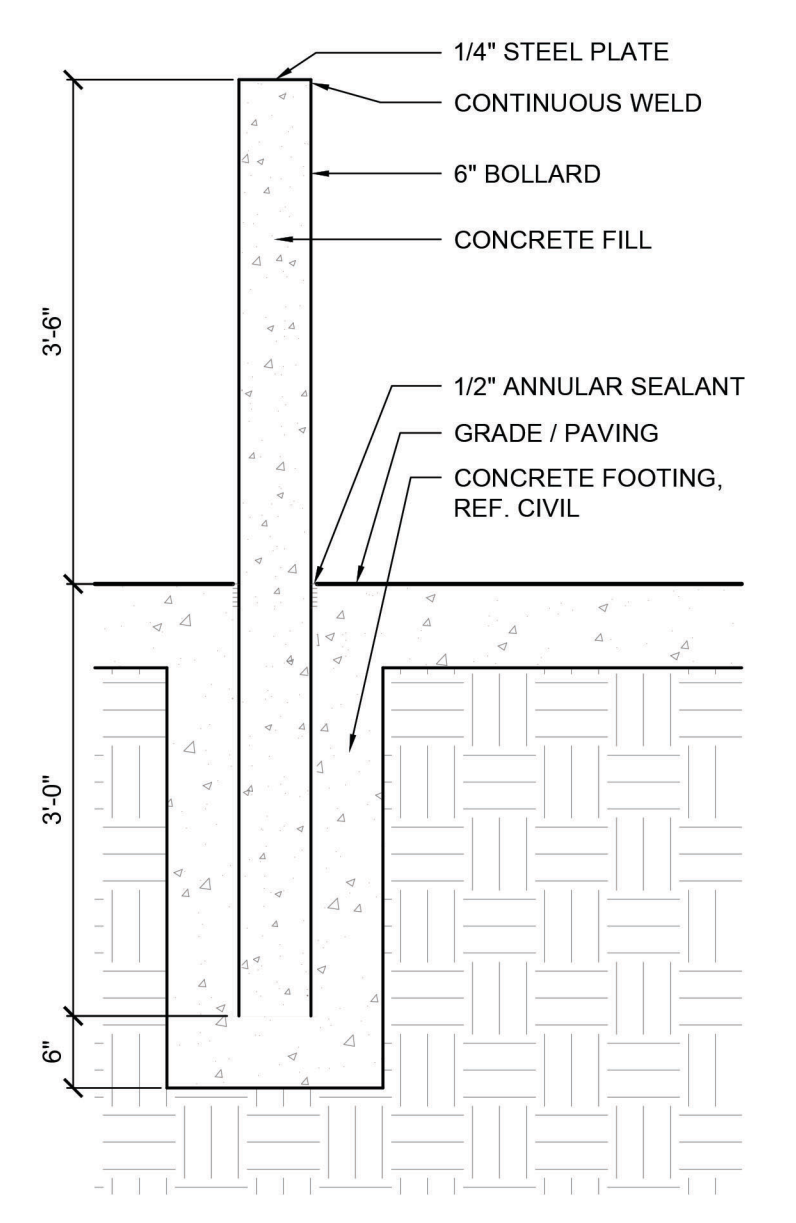
**8 DUMPSTER ENCLOSURE ELEVATION**  
A1.20 scale: 1/4" = 1'-0"

**7 DUMPSTER ENCLOSURE ELEVATION**  
A1.20 scale: 1/4" = 1'-0"

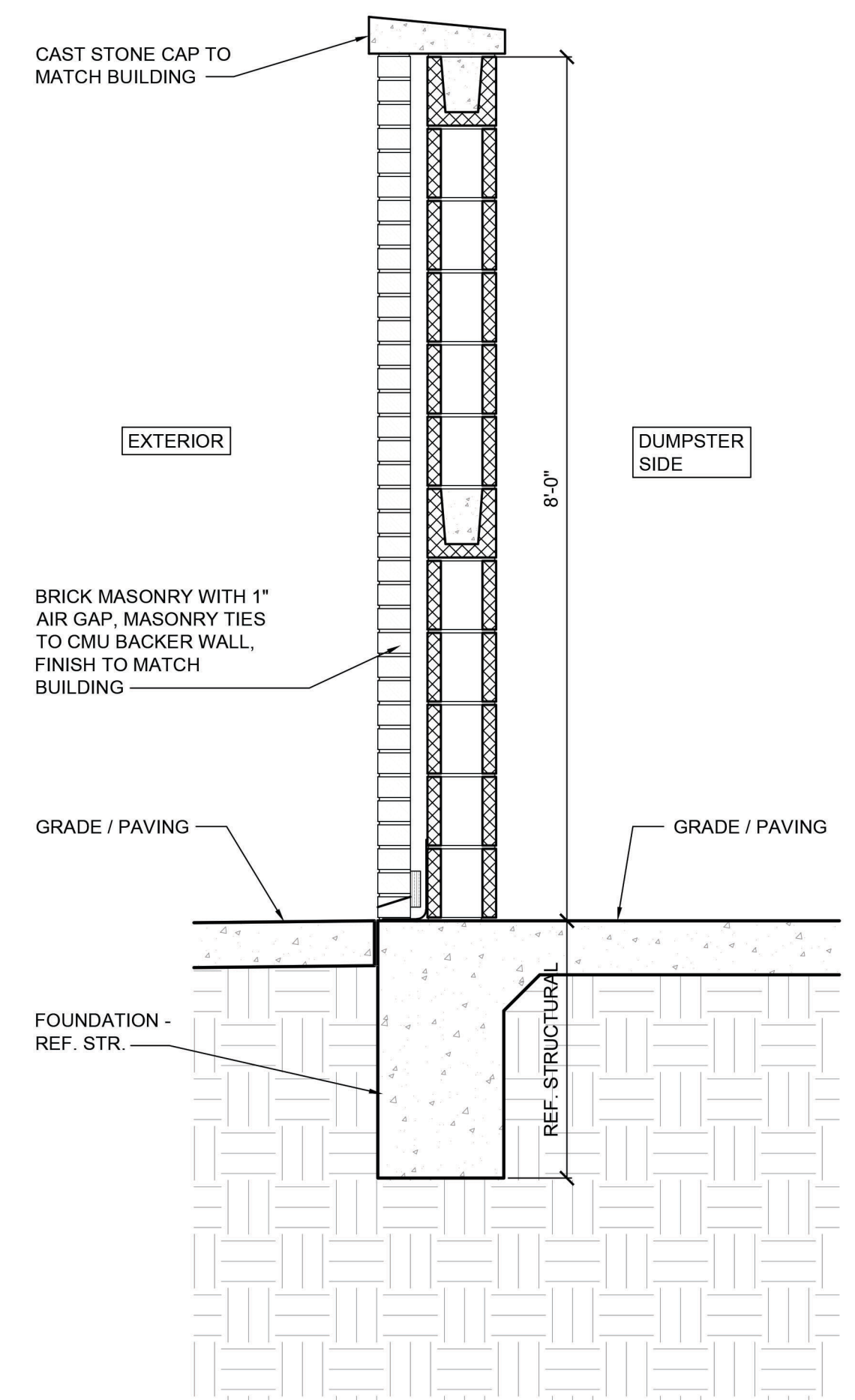
**6 DUMPSTER ENCLOSURE ELEVATION**  
A1.20 scale: 1/4" = 1'-0"



**5 DUMPSTER ENCLOSURE - PLAN**  
A1.20 scale: 1/4" = 1'-0"



**4 TYP. BOLLARD DETAIL**  
A1.20 scale: 3/4" = 1'-0"



**3 DUMPSTER ENCLOSURE SECTION**  
A1.20 scale: 3/4" = 1'-0"

SHELL BUILDINGS  
PROSPER, TX

TOWN PROJECT NUMBER

JOB NUMBER: 20-104.03

ISSUE BLOCK	

DOC. DATE: 01/20/2022

NOT FOR REGULATORY  
APPROVAL, PERMITTING, OR  
CONSTRUCTION

KRIS CALVERT, AIA  
01 / 20 / 2022

SITE DETAILS

A1.20