



# DORAL PARK CENTRE

OFFICES | SHOPPES | HOTELS



## In the Heart of Doral

DORAL PARK CENTRE is a 200,000-square foot mixed-use development in the heart of Doral, one of the most rapidly growing cities in South Florida. The complex will include one 80,000 square foot office tower with ground floor retail, three hotels, free-standing retail, restaurants and banks. **Doral Park Centre** services a dense business community day and night.

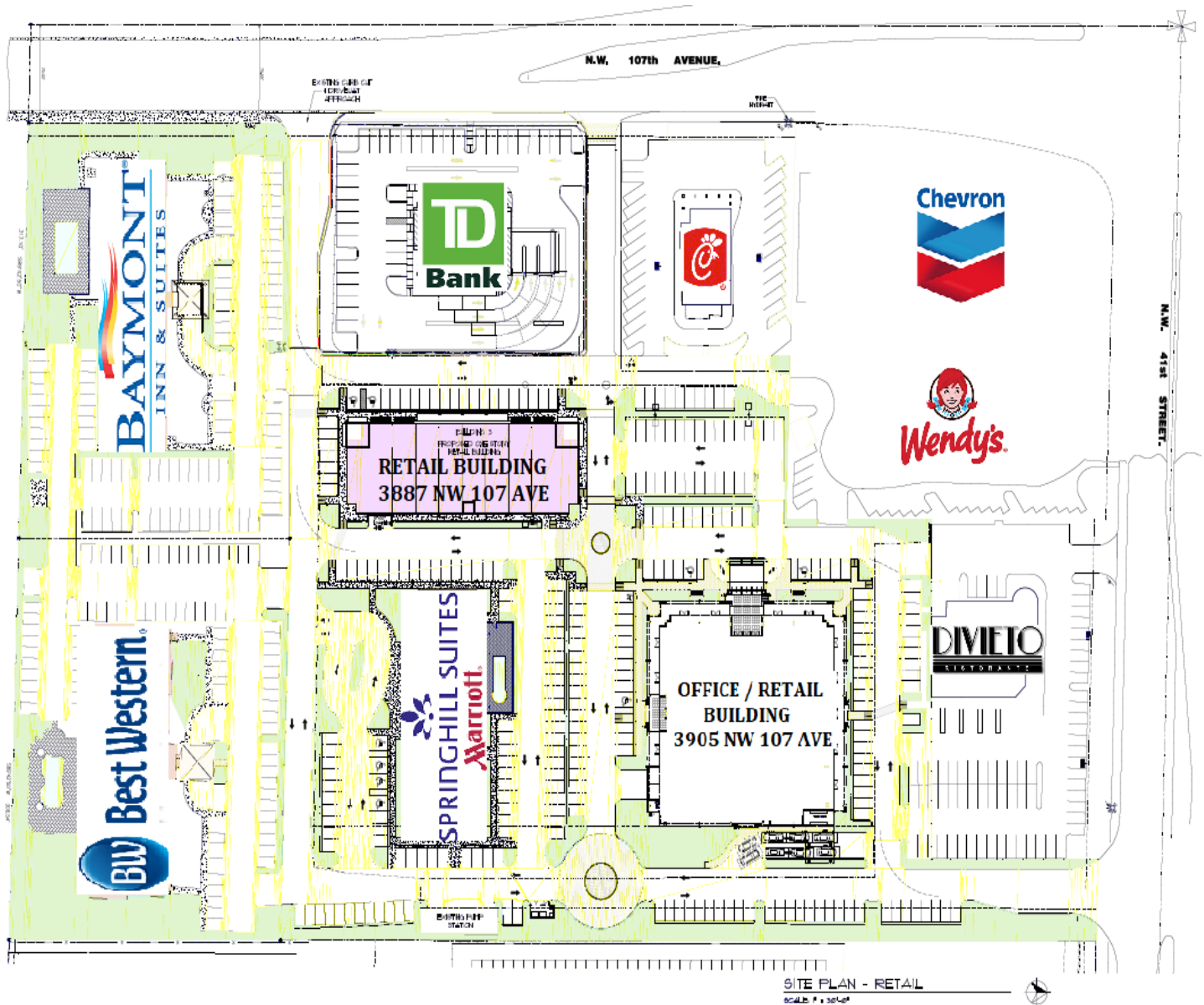
For business owners and professionals looking for a great work-and-play environment, **Doral Park Centre** is the perfect solution. Enjoy close proximity to Miami International Airport, the Palmetto Expressway, the Florida Turnpike, Miami International Mall, Dolphin Mall, and the world-famous Doral Golf & Spa Resort.

- Office and Retail Space for Lease
- Smart, Distinctive Architecture
- 80,000 S.F. Office Tower with Ground Floor Retail
- Office Units from 1,500 S.F., up to 20,000 S.F. for a Full Floor
- Individually Controlled A/C and Electric
- Enclosed Parking Garage
- Secure 24-Hour Card Access
- Minutes from Doral Golf & Spa Resort, Palmetto Expressway, Florida Turnpike and Miami International Airport

### Demographics

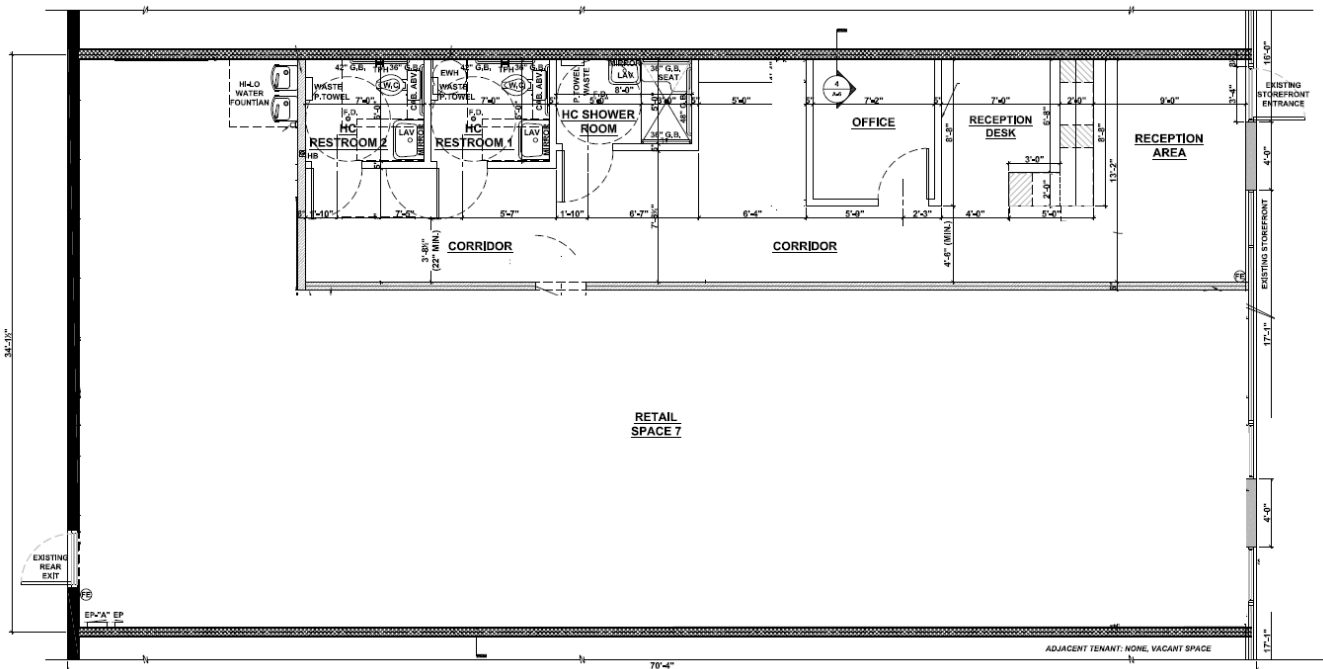
	<b>1 MILE</b>	<b>3 MILES</b>	<b>5 MILES</b>
Population	16,004	84,468	269,975
Average Household Income	\$98,875	\$67,033	\$54,985
Median Age	33	34	38

**OVERALL SITE PLAN WITH RETAIL & OFFICE BUILDING**

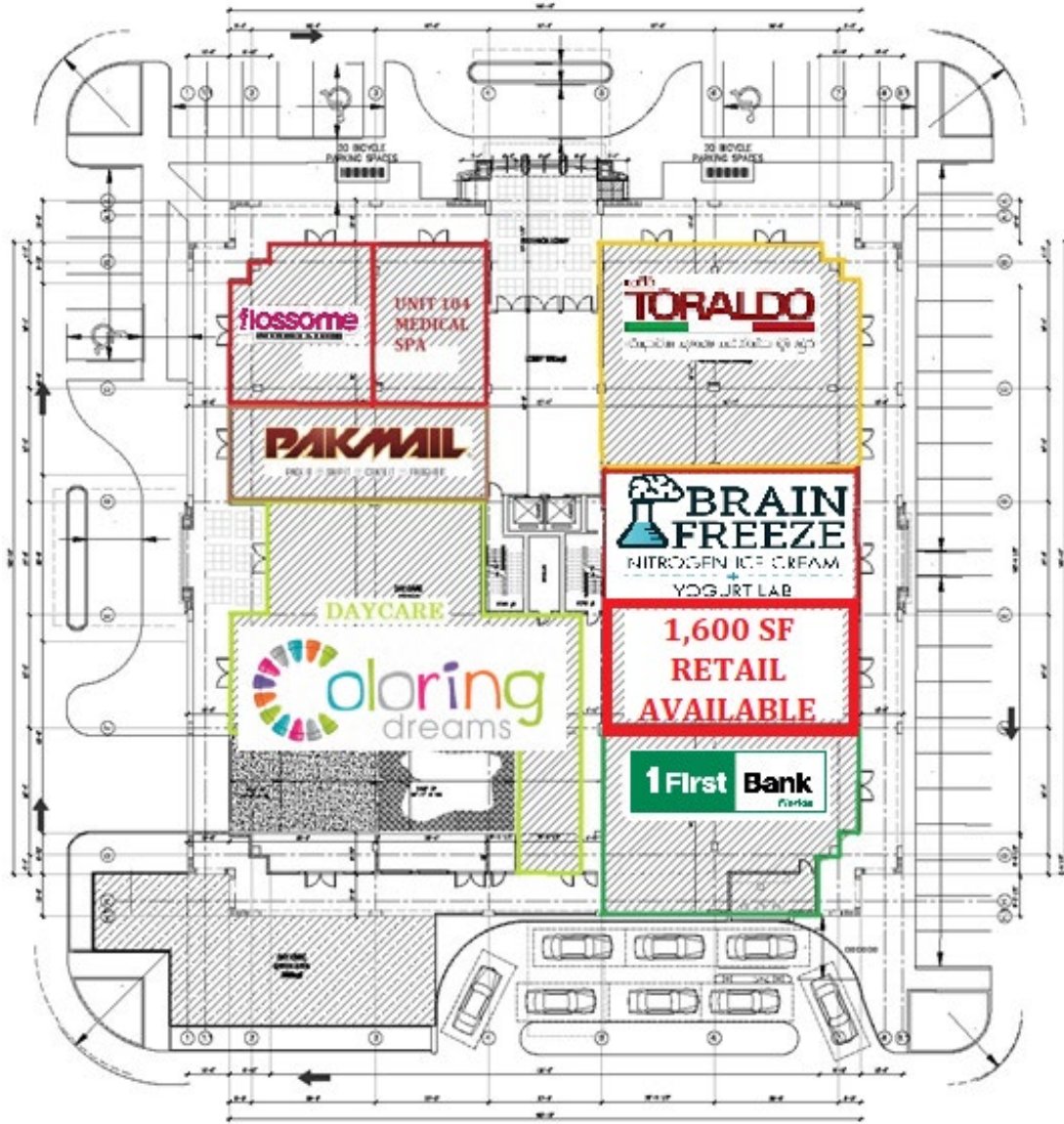


**RETAIL SPACE IN FREESTANDING BUILDING**  
**3887 NW 107 AVENUE – UNIT 106**  
**2,485 SF – AVAILABLE NOVEMBER 2019**

NW 107th Avenue



**GROUND FLOOR OFFICE BUILDING**



**GROUND FLOOR PLAN (BLDG 2)**

SCALE: 1/8" = 1'-0"





NW 41st Street and  
NW 107th Avenue (SEC)  
Doral, Florida 33178

305.667.6461  
DoralParkCentre.com

Developed by



## Offices



EXCLUSIVE AGENT  
**SUCHMAN**  
RETAIL GROUP

1550 Madruga Avenue  
Suite 230  
Coral Gables, Florida 33146  
suchmangroup.com

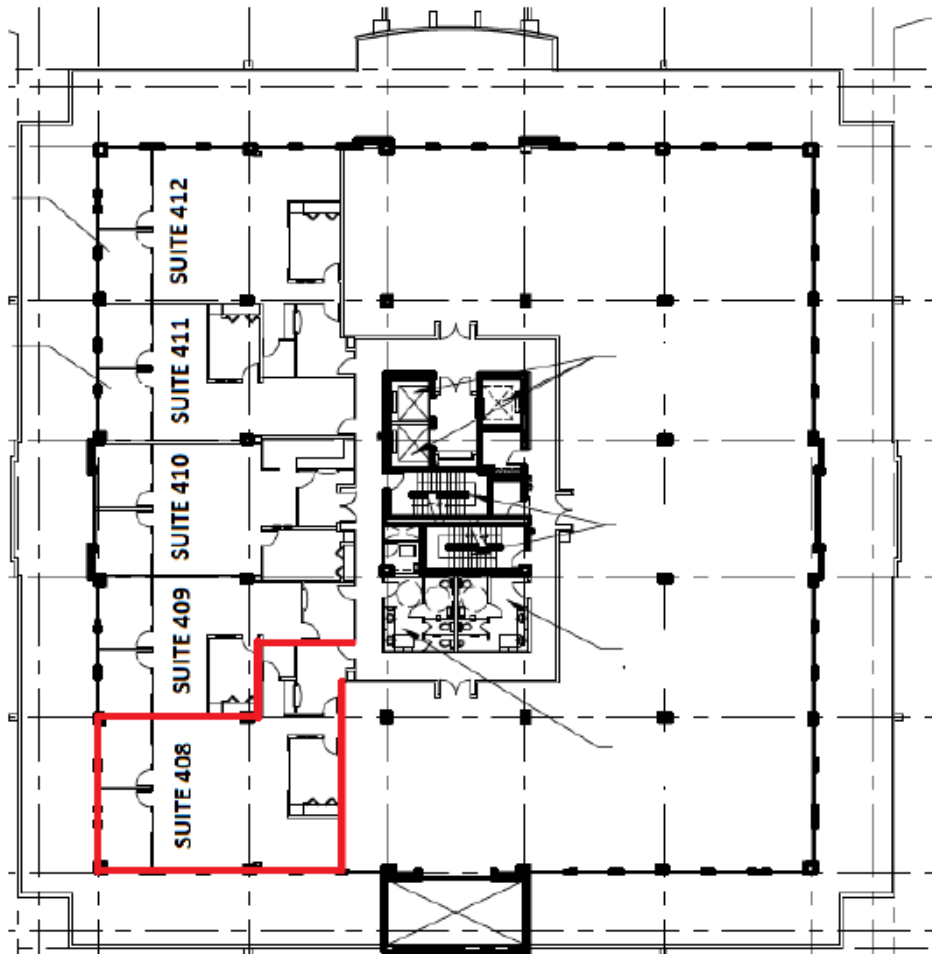
**Ana Vega-Garcia**  
Director of Leasing  
ana@suchmangroup.com  
305.667.6461 Ext.11

**SUITE 408**

**1,919 SF**

**RENT \$ 28.00 Modified Gross**

**Net of Electrical and Janitorial in Unit**



**4th FLOOR**

**This unit is Available**

**This remaining space available is for a Build to Suite Tenant up to +/- 7,000 SF**

