

Likewise



For Sale



**OFFICE/RETAIL CONDO IN
RIVER ARTS DISTRICT**

408 Depot Street, #140, Asheville, NC 28801

Likewise
COMMERCIAL REAL ESTATE

Carla Barnard LISTING BROKER

828.575.0270 | carla@likewisecommercial.com | likewisecommercial.com

408 Depot Street, #140, Asheville, NC 28801



OFFERING SUMMARY

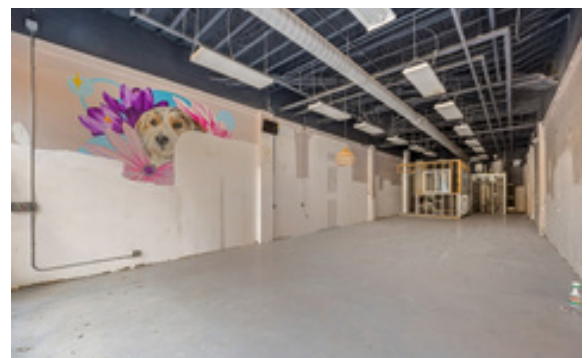
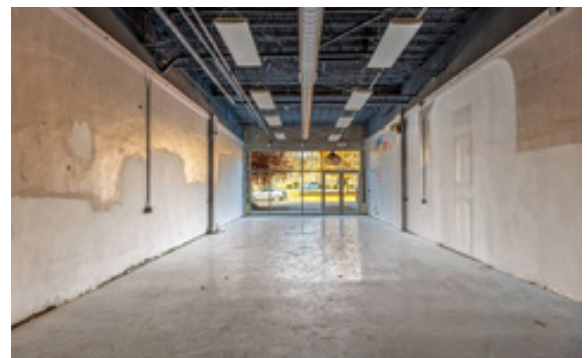
SALE PRICE \$475,000

CONDO SIZE 1,528 SF

ZONING UP

PROPERTY FEATURES

- Ideal opportunity for **owner-user**
- Fully **customizable layout** for variety of businesses
- Located in **vibrant and walkable** River Arts District, just outside of downtown Asheville
- Less than **5 minute** drive to Mission Hospital, downtown Asheville and West Asheville
- Easy access to I-240 and I-26
- MLS# 437122



Likewise
COMMERCIAL REAL ESTATE

Carla Barnard LISTING BROKER

828.575.0270 | carla@likewisecommercial.com | likewisecommercial.com

We obtained the information above from sources we believe to be reliable. However, we have not verified its accuracy and make no guarantee, warranty or representation about it. It is submitted subject to the possibility of errors, omissions, change of price, rental or other conditions, prior sale, lease or financing, or withdrawal without notice. We include projections, opinions, assumptions or estimates for example only, and they may not represent current or future performance of the property. You and your tax and legal advisors should conduct your own investigation of the property and transaction.





RIVER ARTS DISTRICT ARTISTS



*BUSINESS LOCATIONS NOT EXACT