

0 STATE ROAD 15

MILFORD, IN 46542

LAND
FOR SALE



FOR MORE INFORMATION, CONTACT:

JAN ORBAN BROKER

JAN@BRIANPETERSONGROUP.COM
574.551.0121

BRIAN PETERSON

BRIAN@BRIANPETERSONGROUP.COM
574.268.1899



BRIAN PETERSON
REAL ESTATE



2008 E. CENTER STREET WARSAW, IN 46508 BRIANPETERSONGROUP.COM

0 STATE ROAD 15

MILFORD, IN 46542



OFFERING SUMMARY

Sale Price:	\$330,000
Available SF:	
Lot Size:	10.95 Acres
Price / Acre:	\$30,137
Zoning:	Agricultural

PROPERTY OVERVIEW

This 10.95-acre property offers Ag and I-2 zoning, currently utilized as productive farm ground. With its high-traffic exposure and exceptional visibility along a major corridor, this site is perfectly suited for a commercial, industrial, or agricultural venture. Convenient access to key routes and nearby development makes this an ideal location for your next business opportunity. A property with tremendous potential and strategic positioning for future growth.

PROPERTY HIGHLIGHTS

FOR MORE INFORMATION, CONTACT:

JAN ORBAN BROKER

JAN@BRIANPETERSONGROUP.COM
574.551.0121

BRIAN PETERSON

BRIAN@BRIANPETERSONGROUP.COM
574.268.1899

2008 E. CENTER STREET WARSAW, IN 46508 BRIANPETERSONGROUP.COM

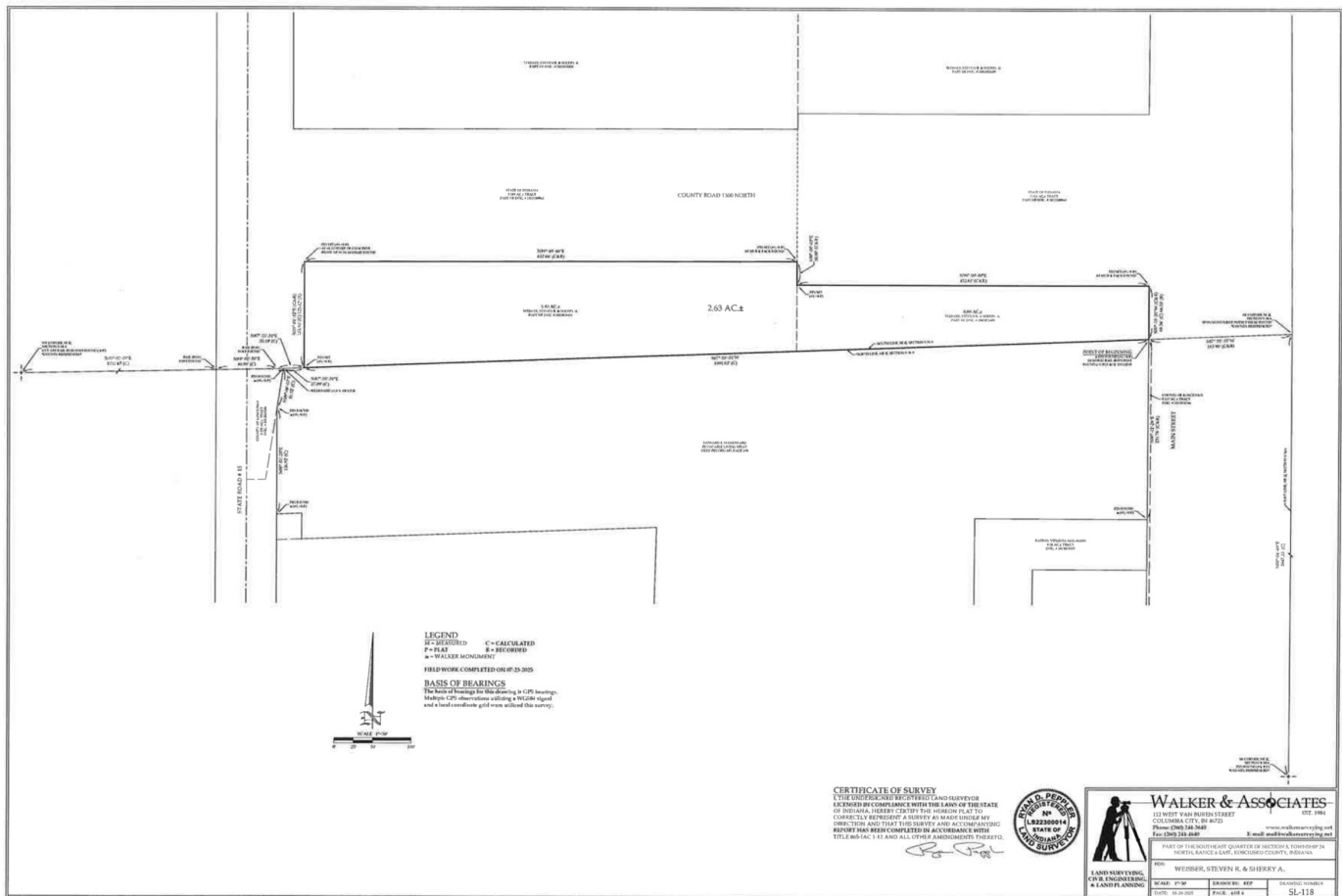


BRIAN PETERSON
REAL ESTATE



0 STATE ROAD 15

MILFORD, IN 46542



FOR MORE INFORMATION, CONTACT:

JAN ORBAN BROKER

JAN@BRIANPETERSONGROUP.COM
 574.551.0121

BRIAN PETERSON

BRIAN@BRIANPETERSONGROUP.COM
 574.268.1899

2008 E. CENTER STREET WARSAW, IN 46508 BRIANPETERSONGROUP.COM

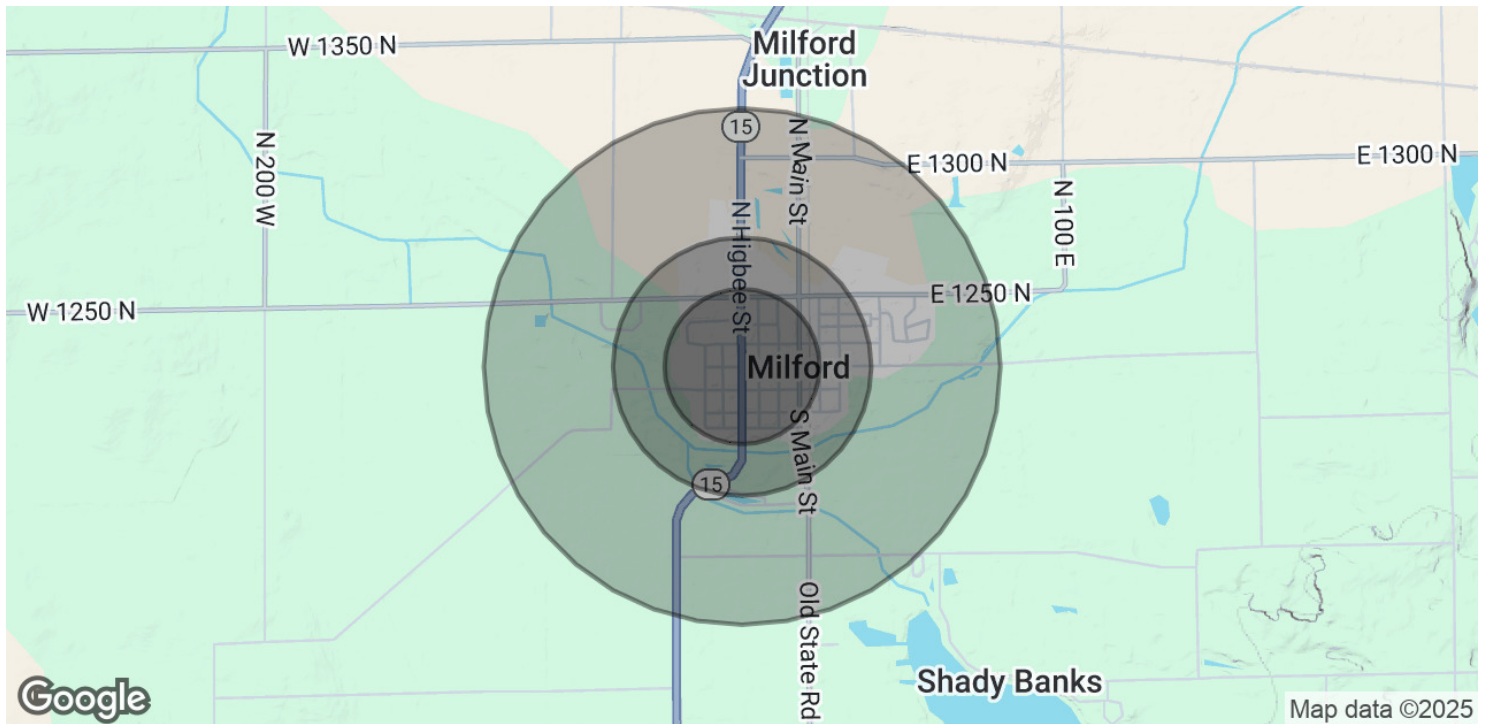


BRIAN PETERSON
 REAL ESTATE



0 STATE ROAD 15

MILFORD, IN 46542



POPULATION	0.3 MILES	0.5 MILES	1 MILE
Total Population	534	1,322	1,920
Average Age	38	38	39
Average Age (Male)	36	36	37
Average Age (Female)	40	40	41

HOUSEHOLDS & INCOME	0.3 MILES	0.5 MILES	1 MILE
Total Households	202	502	721
# of Persons per HH	2.6	2.6	2.7
Average HH Income	\$74,272	\$75,003	\$79,188
Average House Value	\$191,117	\$200,771	\$211,688

Demographics data derived from AlphaMap

FOR MORE INFORMATION, CONTACT:

JAN ORBAN BROKER

JAN@BRIANPETERSONGROUP.COM
574.551.0121

BRIAN PETERSON

BRIAN@BRIANPETERSONGROUP.COM
574.268.1899

2008 E. CENTER STREET WARSAW, IN 46508 BRIANPETERSONGROUP.COM



BRIAN PETERSON
REAL ESTATE



0 STATE ROAD 15

MILFORD, IN 46542



FOR MORE INFORMATION, CONTACT:

JAN ORBAN BROKER

JAN@BRIANPETERSONGROUP.COM
574.551.0121

BRIAN PETERSON

BRIAN@BRIANPETERSONGROUP.COM
574.268.1899

2008 E. CENTER STREET WARSAW, IN 46508 BRIANPETERSONGROUP.COM



BRIAN PETERSON
REAL ESTATE

