

# WESTOWNE SHOPS



2310-2330 Westowne Ave / Oshkosh, WI

2,000 SF  
FOR LEASE



RETAIL OPPORTUNITY

# WESTOWNE SHOPS



## Address

2310-2330 Westowne Ave  
Oshkosh, WI 54904

## Availability

2,000 SF  
Total GLA: 9,712 SF

## Property Details

- Full access along Westowne Avenue via Westhaven (lighted intersection) and Washburn (roundabout)
- 83 parking stalls
- Located within 3 miles of the University of WI-Oshkosh campus with an enrollment of 13,998 students

## 2024 Expenses

CAM: \$5.00 PSF  
Taxes: \$3.53 PSF  
Insurance: \$0.33 PSF  
Total NNN: \$8.86 PSF



Placer.ai

	 2415 Westowne Ave. Oshkosh, WI	 2351 Westowne Ave. Oshkosh, WI	 2270 Westowne Ave. Oshkosh, WI	 1015 N. Washburn St. Oshkosh, WI	 1005 N. Washburn St. Oshkosh, WI
					
VISITS	1,465,211	1,436,107	484,218	258,766	201,071
SIZE - SQ FT	82,263 SF	221,518 SF	6,264 SF	35,015 SF	17,750 SF
VISIT FREQUENCY	7.91	6.48	77.3	7.39	11.33
AVG DWELL TIME (MINUTES)	23	27	20	21	17

## Area Retailers

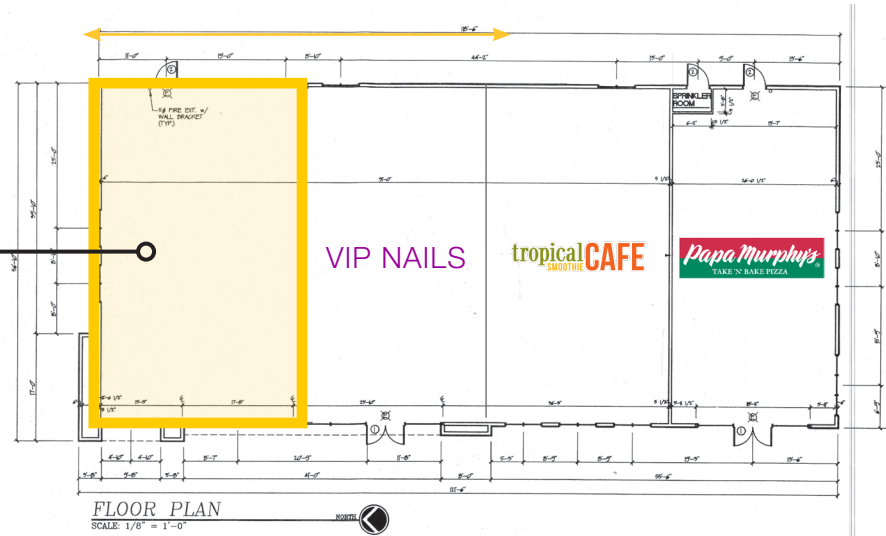


# WESTTOWNE SHOPS



## Proposed Demising Plan

Approx. 2,000 SF



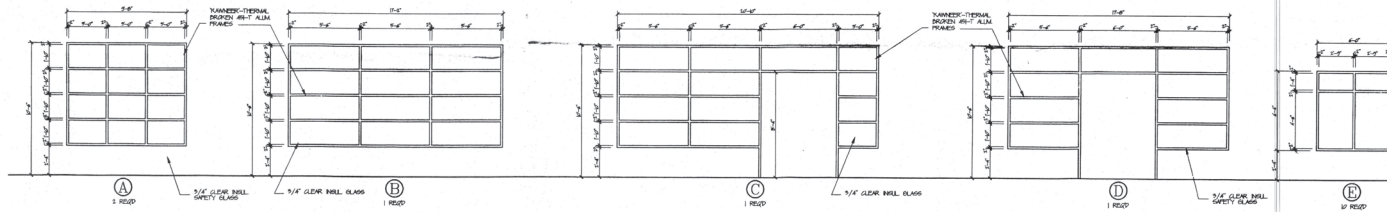
DOOR SCHEDULE	
1	1/2" x 3'-0" x 7'-0" SWP ALUM. TANNED HD.
2	3'-0" x 7'-0" SWP WALL SW. OR 4' FRAME w/ PREPAID PFD (SEE 2)

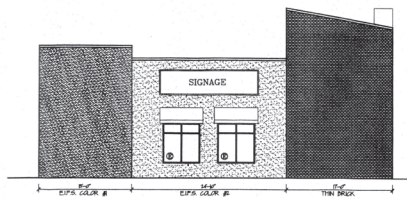
DOOR HARDWARE	
1/2"	PAIR OF BITS
1"	FRAC. COOR. DIA. HILL WHEEL BY TANNED
1"	GLASS
1"	SET OF PEATHERSTOPPING
1"	SWEEP
1"	THRESHOLD

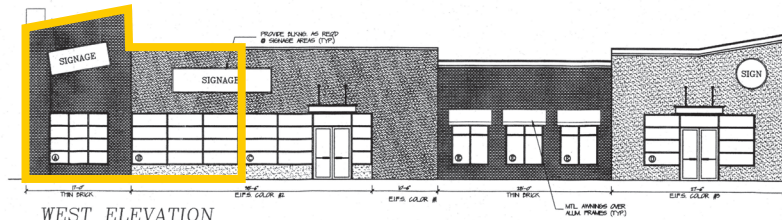
FRAME SCHEDULE	
FLOOR	CONCRETE
WALL	CMU
CEILING	EXPOSED STRUCTURE



**FRAME ELEVATIONS**  
SCALE: 1/4" = 1'-0"



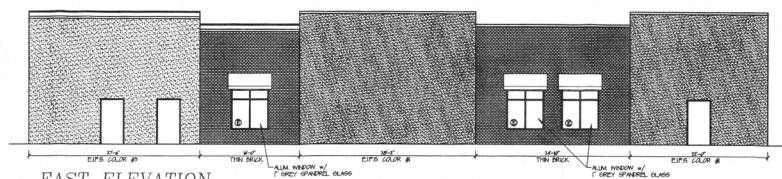
**NORTH ELEVATION**  
SCALE: 1/8" = 1'-0"



**WEST ELEVATION**  
SCALE: 1/8" = 1'-0"



**SOUTH ELEVATION**  
SCALE: 1/8" = 1'-0"



**EAST ELEVATION**  
SCALE: 1/8" = 1'-0"

# WESTTOWNE SHOPS



Demographics	3 MILES	5 MILES	10 MILES
POPULATION	53,033	76,865	99,814
HOUSEHOLDS	22,424	31,601	40,914
AVG HOUSEHOLD INCOME	\$76,815	\$79,952	\$87,158
DAYTIME POPULATION	56,200	84,340	107,782

# WESTOWNE SHOPS



Fred  
Stallé

T: 414.390.1415

[FStallé@MidAmericaGrp.com](mailto:FStallé@MidAmericaGrp.com)

Mike  
Fitzgerald

T: 414.390.1427

[Fitzgerald@midamericagr.com](mailto:Fitzgerald@midamericagr.com)



600 N. Plankinton Ave, Suite 301  
Milwaukee, Wisconsin 53203  
414.273.4600

[MidAmericaGrp.com](http://MidAmericaGrp.com)

CONTACT

# BROKER DISCLOSURE TO NON-RESIDENTIAL CUSTOMERS



Prior to negotiating on your behalf the brokerage firm, or an agent associated with the firm, must provide you the following disclosure:

## DISCLOSURE TO CUSTOMERS

You are a customer of the brokerage firm (hereinafter Firm). The Firm is either an agent of another party in the transaction or a subagent of another firm that is the agent of another party in the transaction. A broker or a salesperson acting on behalf of the Firm may provide brokerage services to you. Whenever the Firm is providing brokerage services to you, the Firm and its brokers and salespersons (hereinafter Agents) owe you, the customer, the following duties:

- The duty to provide brokerage services to you fairly and honestly.
- The duty to exercise reasonable skill and care in providing brokerage services to you.
- The duty to provide you with accurate information about market conditions within a reasonable time if you request it, unless disclosure of the information is prohibited by law.
- The duty to disclose to you in writing certain Material Adverse Facts about a property, unless disclosure of the information is prohibited by law.
- The duty to protect your confidentiality. Unless the law requires it, the Firm and its Agents will not disclose your confidential information or the confidential information of other parties.
- The duty to safeguard trust funds and other property held by the Firm or its Agents.
- The duty, when negotiating, to present contract proposals in an objective and unbiased manner and disclose the advantages and disadvantages of the proposals.

Please review this information carefully. An Agent of the Firm can answer your questions about brokerage services, but if you need legal advice, tax advice, or a professional home inspection, contact an attorney, tax advisor, or home inspector. This disclosure is required by section 452.135 of the Wisconsin statutes and is for information only. It is a plain-language summary of the duties owed to a customer under section 452.133(1) of the Wisconsin statutes.

## CONFIDENTIALITY NOTICE TO CUSTOMERS

The Firm and its Agents will keep confidential any information given to the Firm or its Agents in confidence, or any information obtained by the Firm and its Agents that a reasonable person would want to be kept confidential, unless the information must be disclosed by law or you authorize the Firm to disclose particular information. The Firm and its Agents shall continue to keep the information confidential after the Firm is no longer providing brokerage services to you.

The following information is required to be disclosed by law:

1. Material Adverse Facts, as defined in Wis. Stat. § 452.01(5g) (see "Definition of Material Adverse Facts").
2. Any facts known by the Firm or its Agents that contradict any information included in a written inspection report on the property or real estate that is the subject of the transaction.

To ensure that the Firm and its Agents are aware of what specific information you consider confidential, you may list that information below. At a later time, you may also provide the Firm or its Agents with other Information you consider to be confidential.

**NON-CONFIDENTIAL INFORMATION** (*the following information may be disclosed by the Firm and its Agents*): \_\_\_\_\_

\_\_\_\_\_  
(Insert information you authorize to be disclosed, such as financial qualification information.)

**CONFIDENTIAL INFORMATION:** \_\_\_\_\_

## DEFINITION OF MATERIAL ADVERSE FACTS

A "Material Adverse Fact" is defined in Wis. Stat. § 452.01(5g) as an Adverse Fact that a party indicates is of such significance, or that is generally recognized by a competent licensee as being of such significance to a reasonable party, that it affects or would affect the party's decision to enter into a contract or agreement concerning a transaction or affects or would affect the party's decision about the terms of such a contract or agreement.

An "Adverse Fact" is defined in Wis. Stat. § 452.01(1e) as a condition or occurrence that a competent licensee generally recognizes will significantly and adversely affect the value of the property, significantly reduce the structural integrity of improvements to real estate, or present a significant health risk to occupants of the property; or information that indicates that a party to a transaction is not able to or does not intend to meet his or her obligations under a contract or agreement made concerning the transaction.

## NOTICE ABOUT SEX OFFENDER REGISTRY

You may obtain information about the sex offender registry and persons registered with the registry by contacting the Wisconsin Department of Corrections on the Internet at <http://www.doc.wi.gov> or by telephone at 608-240-5830.