

For Sublease  
Office/Medical Suite  
1,792 RSF +/-



## 3114 Telegraph Road, Suite D

Ventura, California 93003

### Property Description

Sublease - 2nd Floor Shell with Mountain Views

\$2.50 per SF Net

Suite C - Leased

Suite D - 1,439 USF/1,792 RSF

Monument Signage Potential

New Construction

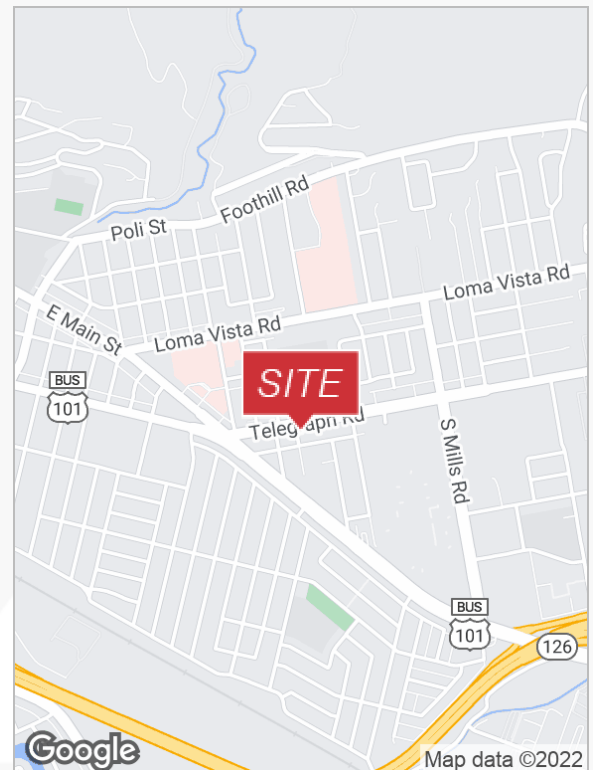
State-of-the-Art Electronic Building Controls

High Speed Fiber Optics

Shell Space with Substantial Improvement Dollars  
(\$35 per Usable Square Foot)

Local Ownership and Management

Elevator Served



For more information

**Steve Doll, Senior Vice President**

O: 805.288.5463

sdoll@naicapital.com | CalDRE #01013707

No warranty, express or implied, is made as to the accuracy of the information contained herein. This information is submitted subject to errors, omissions, change of price, rental or other conditions, withdrawal without notice, and is subject to any special listing conditions imposed by our principals. Cooperating brokers, buyers, tenants and other parties who receive this document should not rely on it, but should use it as a starting point of analysis, and should independently confirm the accuracy of the information contained herein through a due diligence review of the books, records, files and documents that constitute reliable sources of the information described herein. Logos are for identification purposes only and may be trademarks of their respective companies. NAI Capital, Inc. CAL DRE Lic. #02130474

**NAI Capital**

300 Esplanade Drive, Suite 470

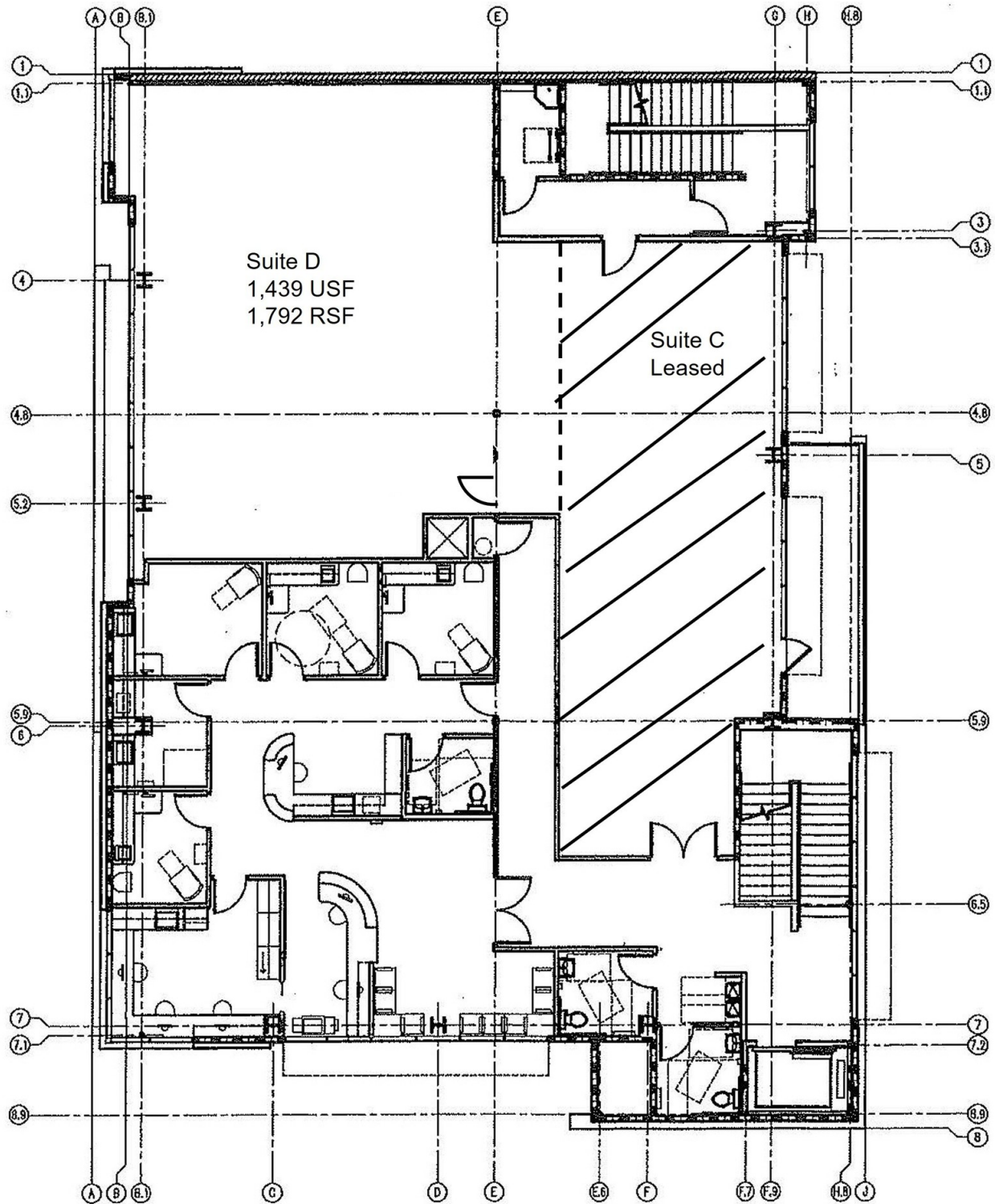
Oxnard, CA 93036

805.278.1400

**naicapital.com**

For Sublease

# 3114 Telegraph Road, Suite D



## Steve Doll

Senior Vice President  
805.288.5463  
sdoll@naicapital.com  
CalDRE #01013707



For Sublease

3114 Telegraph Road, Suite D



**Steve Doll**

Senior Vice President  
805.288.5463  
sdoll@naicapital.com  
CalDRE #01013707

**NAI**Capital  
COMMERCIAL REAL ESTATE SERVICES, WORLDWIDE