



Investment  
Properties  
Corporation

**F O R L E A S E**

# POINCIANA PROFESSIONAL PARK CLASS A OFFICE SUITES

📍 Located at the intersection of Golden Gate Parkway & Airport Pulling Road

2590 Golden Gate Parkway | Naples, FL 34105



*click here!*



Google  
Maps

**CONTACT (239) 261-3400**

**Clint Sherwood, CCIM, ext. 179**  
**clint@ipcnaples.com**

**Tara Stokes, ext. 176**  
**tara@ipcnaples.com**

Investment Properties Corporation of Naples  
3838 Tamiami Trail North Suite 402  
Naples Florida 34103-3586

Tel: 239-261-3400 Fax: 249-261-7579 [www.ipcnaples.com](http://www.ipcnaples.com)

*Licensed Real Estate Broker*

The statement and figures presented herein, while not guaranteed, are secured from sources we believe authoritative. Subject to prior sale, lease, withdrawal and price change without notice.



**Investment  
Properties  
Corporation**

# POINCIANA PROFESSIONAL PARK

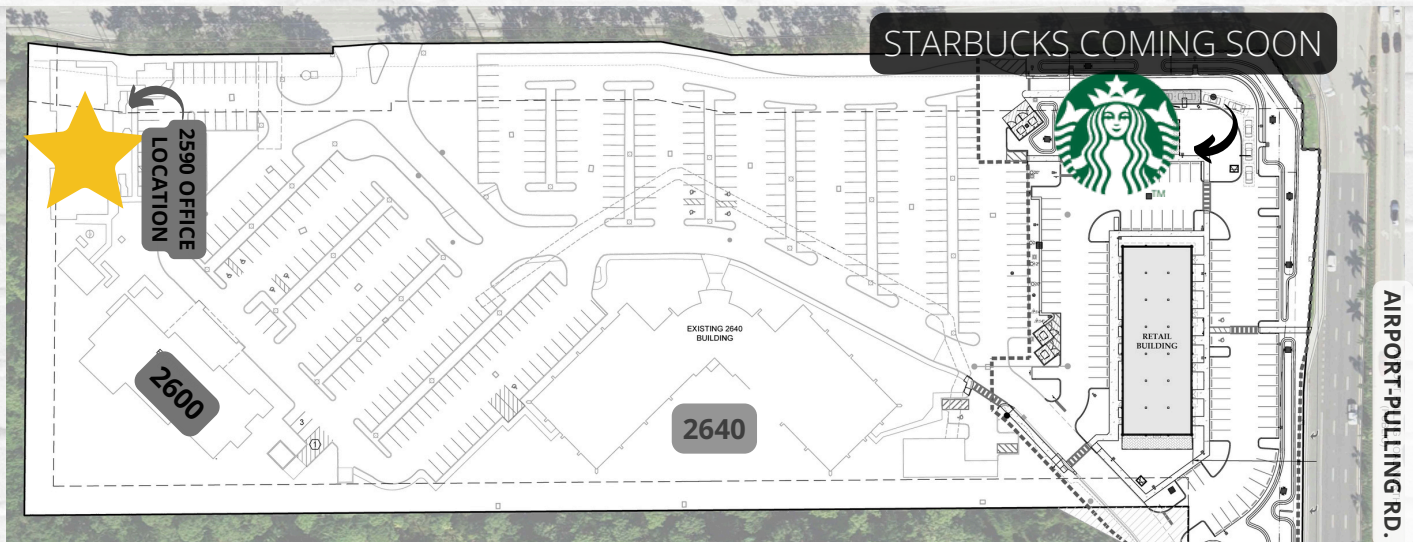
📍 Located at the intersection of Golden Gate Parkway & Airport Pulling Road

2590 Golden Gate Parkway | Naples, FL 34105



<u>SUITE #</u>	<u>SQUARE FOOTAGE</u>	<u>BASE RENT</u>	<u>EST. 2024 CAM</u>	<u>AVAILABILITY</u>
103-104	965.5 SF	\$28 NNN	\$12.76 PSF	1/01/2025

Beautiful professional office park in wooded parcel located at the intersection of Golden Gate Parkway and Airport Pulling Road. Two miles from I-75 interchange and four miles from 5th Avenue South. Single-story building offers convenient, direct access. Newly-completed renovations, interior and exterior. Efficient layout. Walking path. Outdoor lunch areas.





**Investment  
Properties  
Corporation**

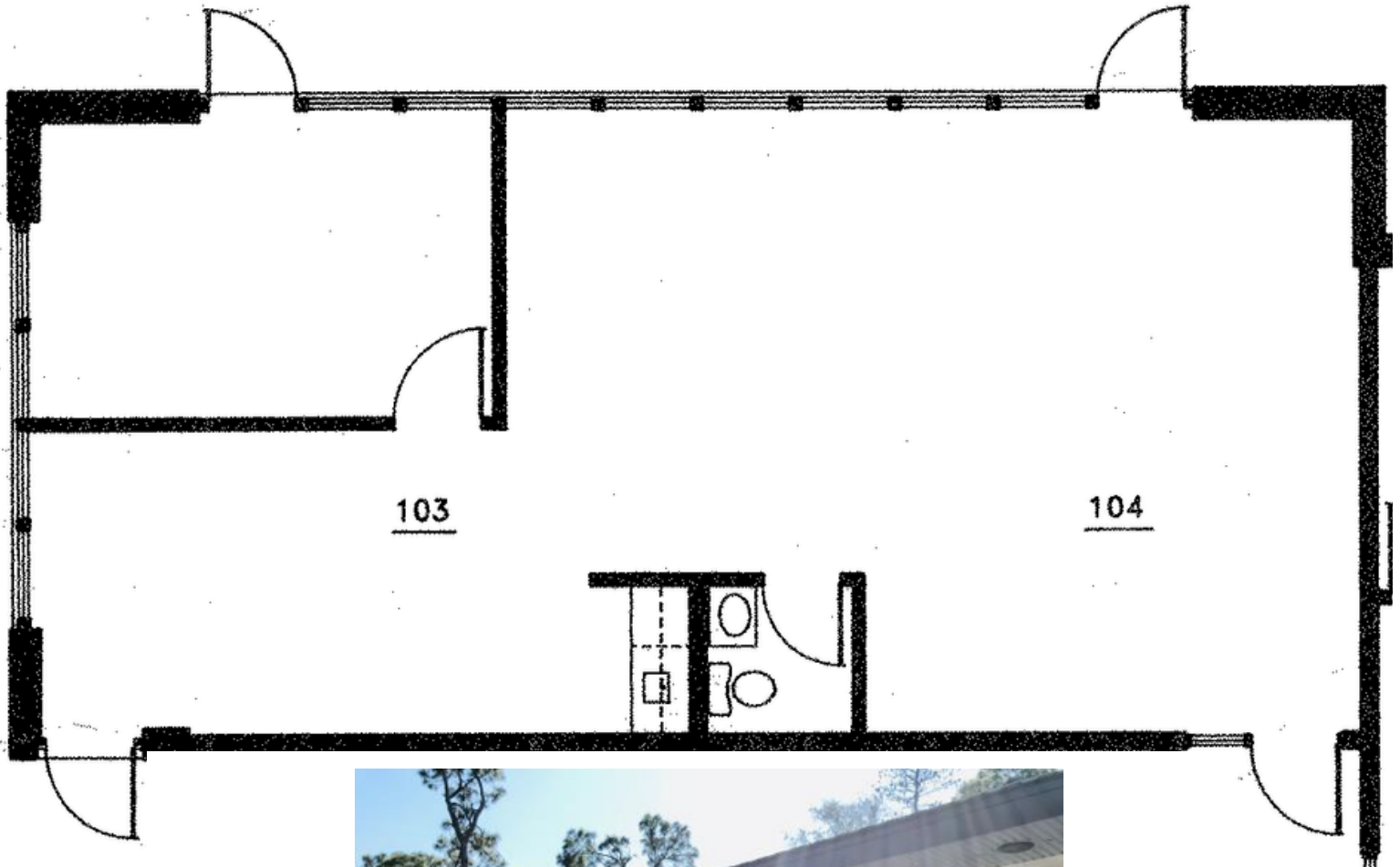
# POINCIANA PROFESSIONAL PARK

📍 Located at the intersection of Golden Gate Parkway & Airport Pulling Road

2590 Golden Gate Parkway | Naples, FL 34105

**SUITE 103-104**

**965.5 SF**





**Investment  
Properties  
Corporation**

# POINCIANA PROFESSIONAL PARK

📍 Located at the intersection of Golden Gate Parkway & Airport Pulling Road

2590 Golden Gate Parkway | Naples, FL 34105



COASTLAND CENTER

GOLDEN GATE PARKWAY

SUBJECT PROPERTY

AIRPORT PULLING ROAD N

41

Tamiami Trail N / 9TH STREET

GOODLETTE FRANK ROAD

GULFSHORE BOULEVARD

NCH  
Healthcare System

Naples AIRPORT

FIFTH AVENUE SOUTH  
EST. 1923

5TH AVENUE SOUTH

NAPLES SQUARE

BOATHOUSE  
on Naples Bay  
NAPLES BOAT CLUB  
TIN CITY

click here!

**CONTACT (239) 261-3400**

Clint Sherwood, CCIM, ext. 179  
clint@ipcnaples.com

Tara Stokes, ext. 176  
tara@ipcnaples.com