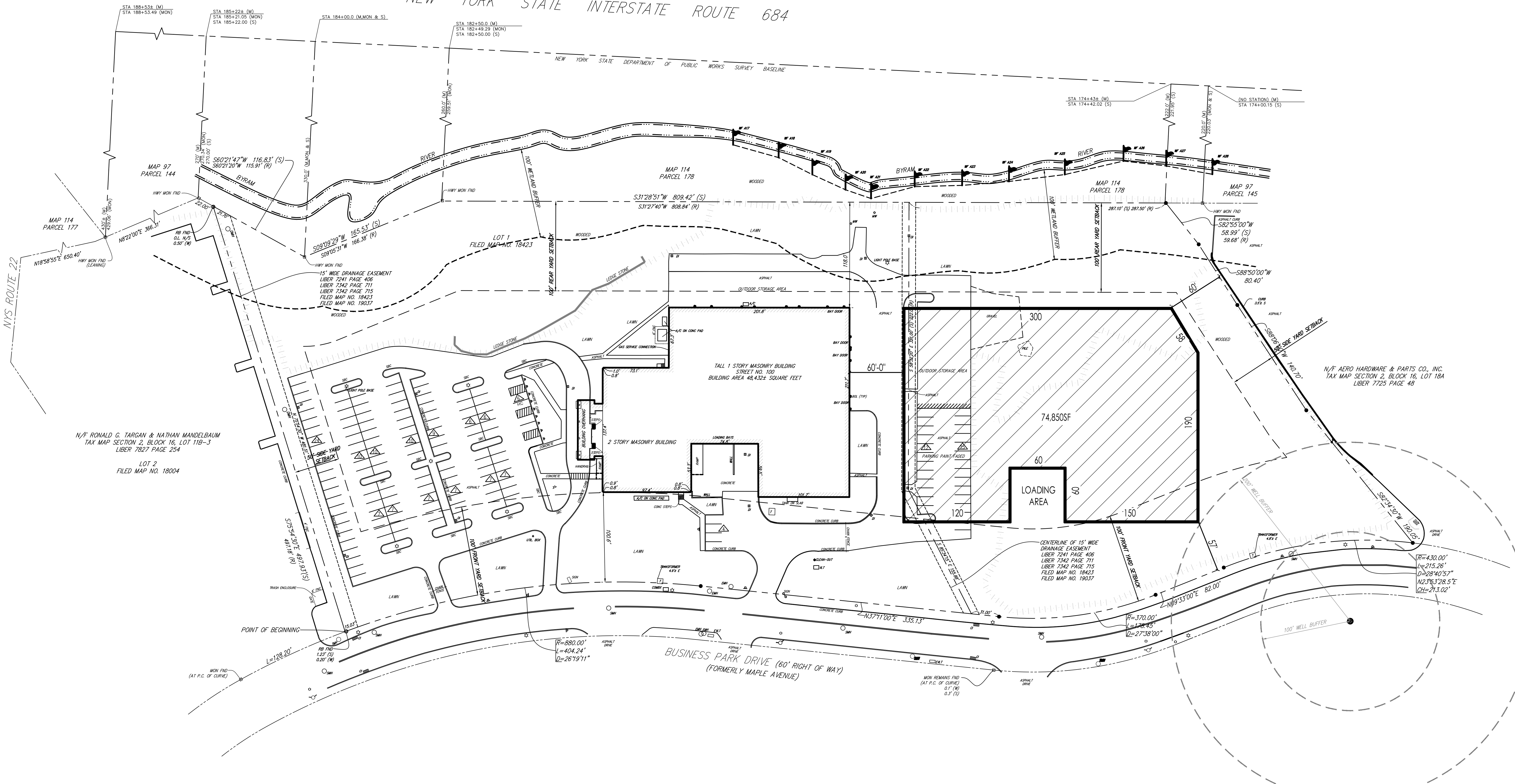


NEW YORK STATE INTERSTATE ROUTE 684

NEW YORK STATE DEPARTMENT OF PUBLIC WORKS SURVEY BASELINE



N/F RONALD G. TARGAN & NATHAN MANDELBAUM
TAX MAP SECTION 2, BLOCK 16, LOT 11B-3
LIBER 7827 PAGE 254

LOT 2
FILED MAP NO. 18004

N/F AERO HARDWARE & PARTS CO., INC.
TAX MAP SECTION 2, BLOCK 16, LOT 18A
LIBER 7725 PAGE 48

CENTERLINE OF 15' WIDE
DRAINAGE EASEMENT
LIBER 7241 PAGE 406
LIBER 7342 PAGE 711
LIBER 7342 PAGE 715
FILED MAP NO. 18423
FILED MAP NO. 19037

R=430.00'
L=215.26'
D=28°40'57"
N23°53'28.5"E
CH=213.02'

BUSINESS PARK DRIVE (60' RIGHT OF WAY)
(FORMERLY MAPLE AVENUE)

R=880.00'
L=404.24'
D=26°19'11"

R=370.00'
L=228.45'
D=27°38'00"

R=128.20'
L=128.20'
D=0.00'

MON REMAINS FND
(AT P.C. OF CURVE)
0.1' (W)
0.3' (S)

MON FND
(AT P.C. OF CURVE)

NYS ROUTE 22

MAP 97
PARCEL 144

MAP 114
PARCEL 178

MAP 114
PARCEL 178

MAP 97
PARCEL 145

MAP 114
PARCEL 177

LOT 1
FILED MAP NO. T8423

MAP 97
PARCEL 144

MAP 114
PARCEL 177

MAP 97
PARCEL 144

MAP 114
PARCEL 177

MAP 97
PARCEL 144

MAP 114
PARCEL 177

MAP 97
PARCEL 144

MAP 114
PARCEL 177

MAP 97
PARCEL 144

MAP 114
PARCEL 177

MAP 97
PARCEL 144

MAP 114
PARCEL 177

MAP 97
PARCEL 144

MAP 114
PARCEL 177