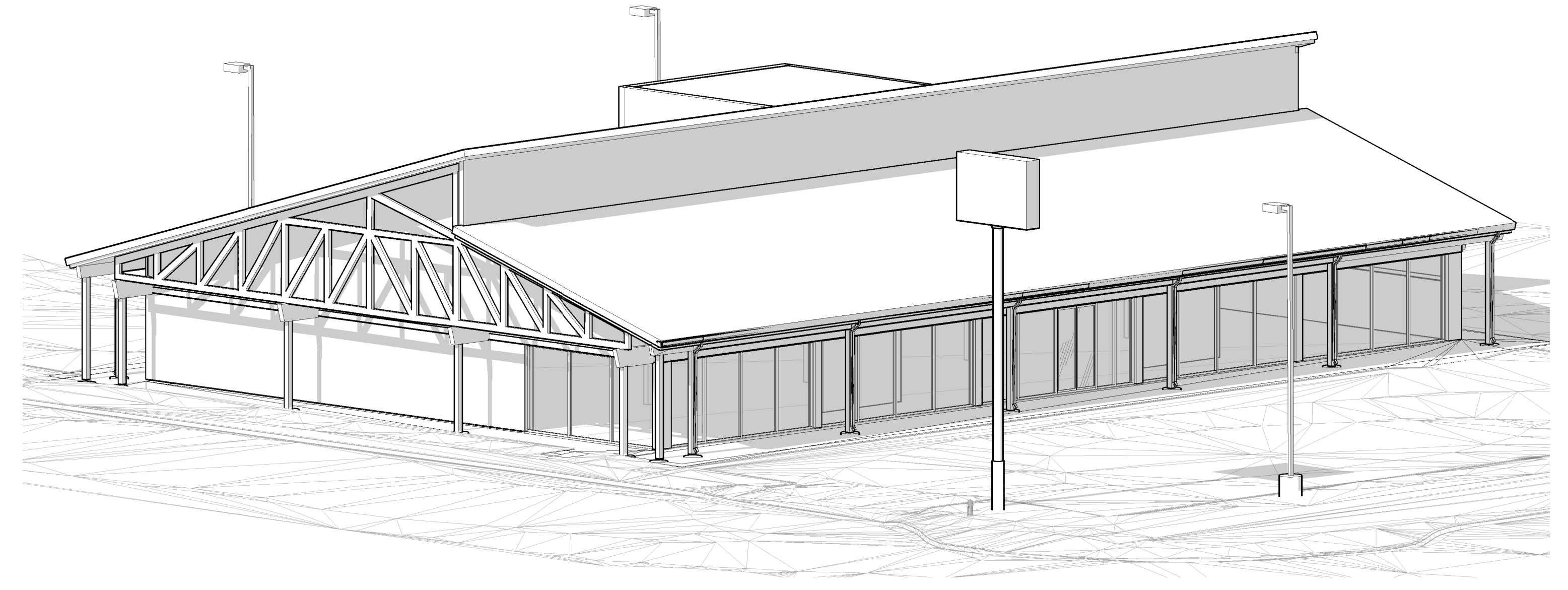
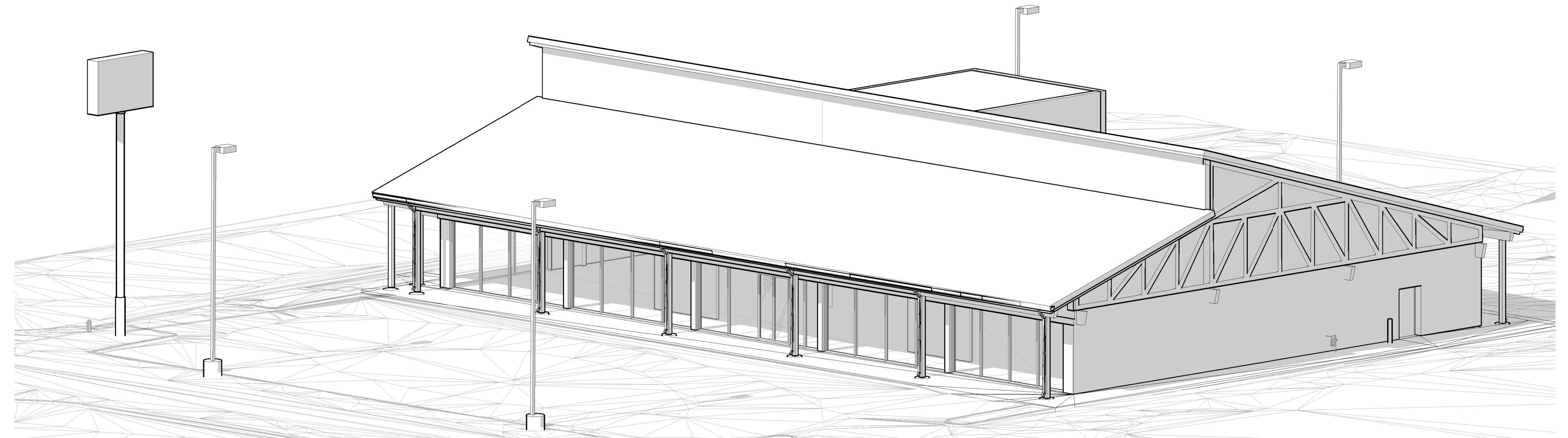


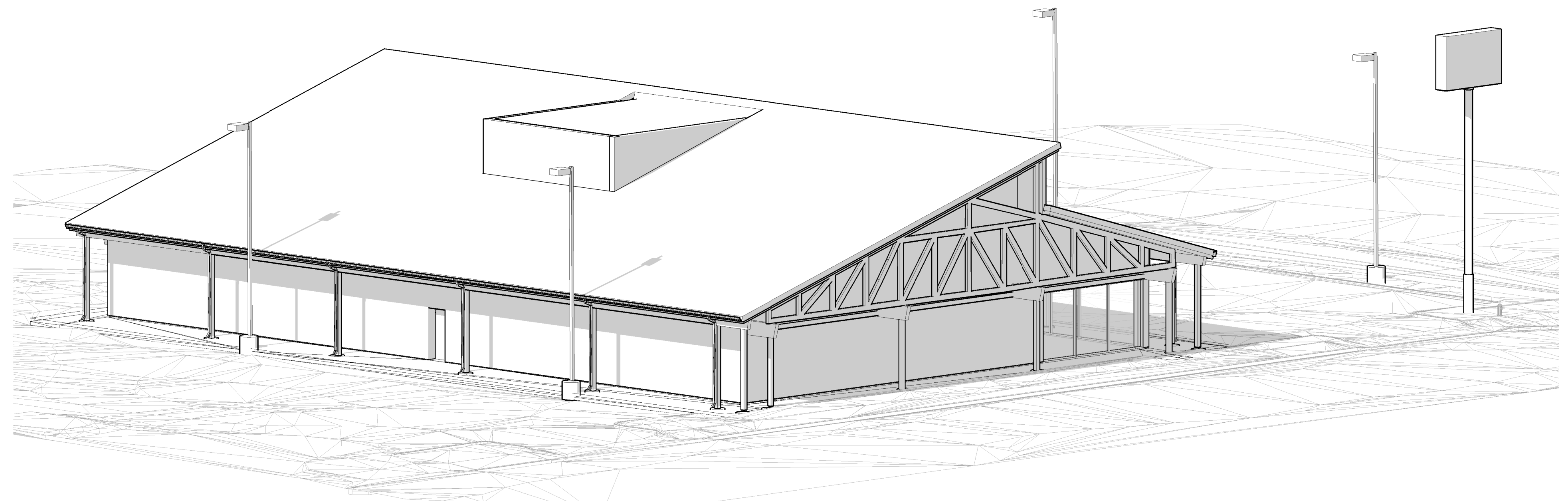
④ NORTHEAST



③ SOUTHWEST



② SOUTHEAST



① NORTHWEST

NOT FOR CONSTRUCTION

PIER1  
30 WEST 900 SOUTH  
SALT LAKE CITY, 84101

10.08.2019

AS-BUILTS

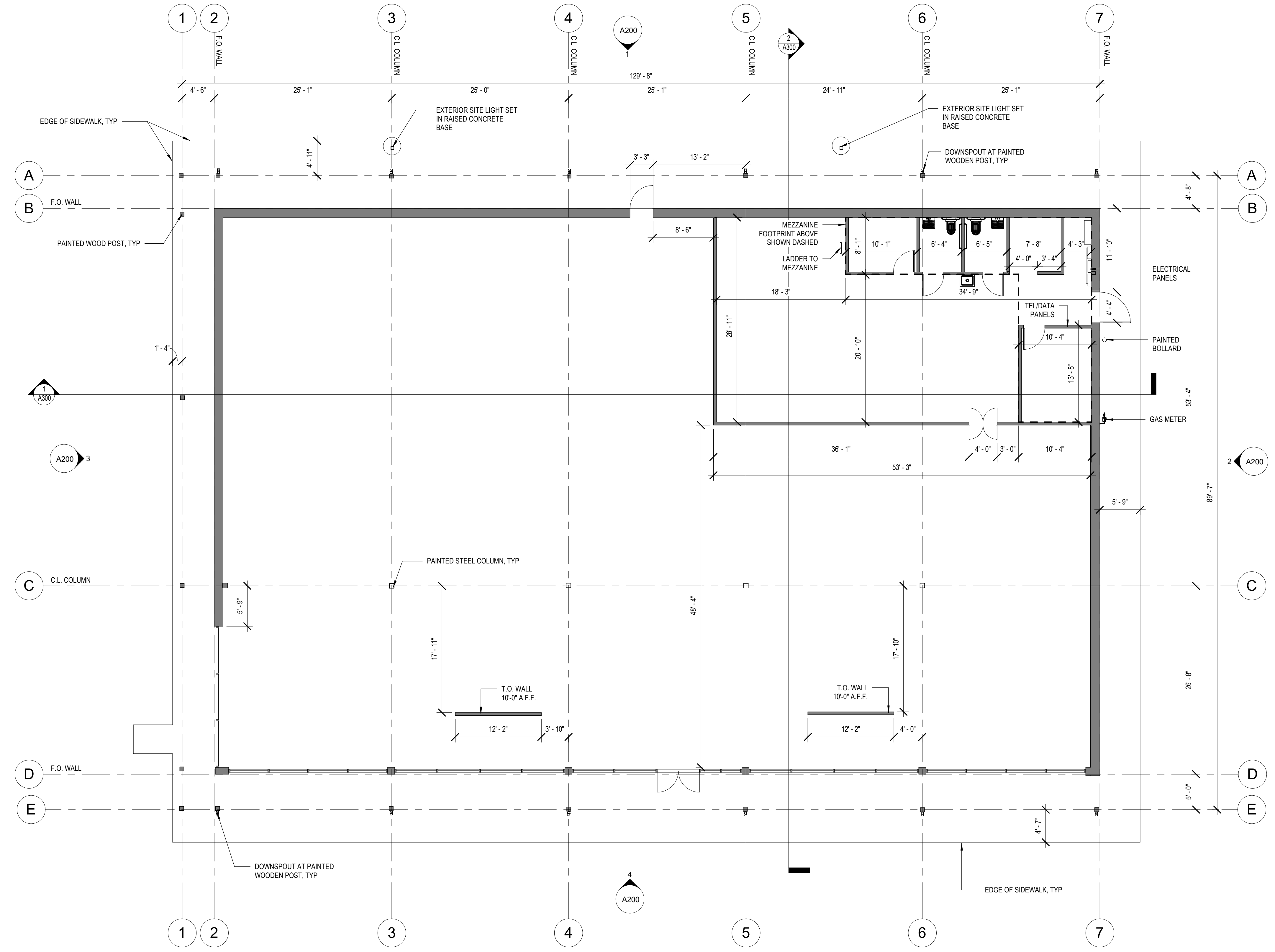
MODEL VIEWS

A000

**GENERAL NOTES**

- DIMENSIONS PROVIDED ARE APPROXIMATE.
- ELEMENTS THAT ARE OFF-AXIS HAVE BEEN CORRECTED FOR DRAWING CLARITY. CONTRACTOR TO VERIFY FIELD CONDITIONS.

NOT FOR CONSTRUCTION



① LEVEL 1  
1/8" = 1'-0"

**PIER 1**  
**30 WEST 900 SOUTH**  
**SALT LAKE CITY, 84101**

10.08.2019

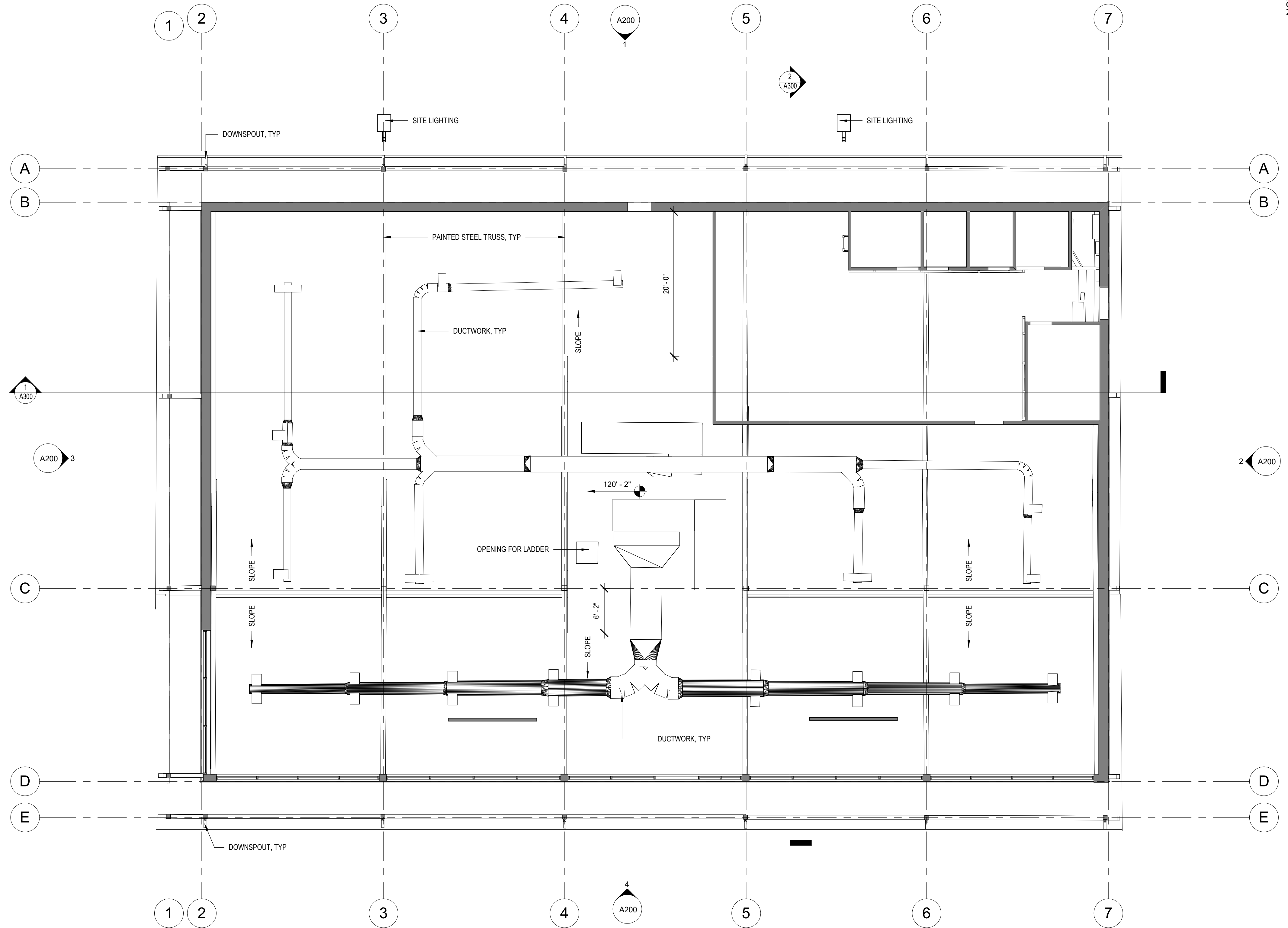
AS-BUILTS

FLOOR PLAN

A100

- GENERAL NOTES**
- ELEMENTS THAT ARE OFF-AXIS HAVE BEEN CORRECTED FOR DRAWING CLARITY. CONTRACTOR TO VERIFY FIELD CONDITIONS.
  - LAY-IN GRID CEILING AND TRACK LIGHTING HAS NOT BEEN SHOWN. DIMENSIONS PROVIDED ARE APPROXIMATE.

NOT FOR CONSTRUCTION



**PIER 1**  
**30 WEST 900 SOUTH**  
**SALT LAKE CITY, 84101**

10.08.2019

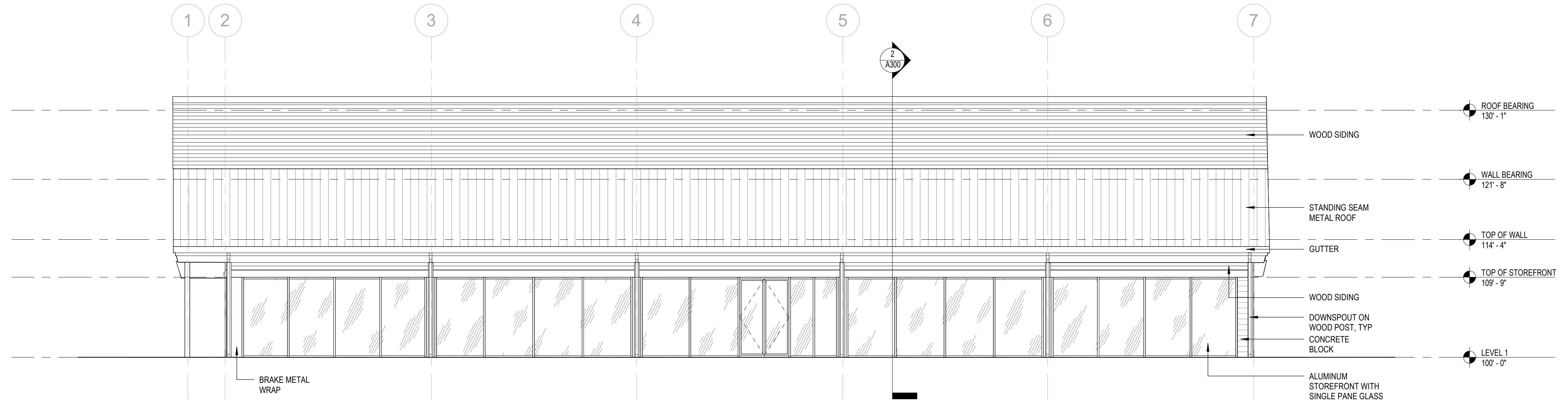
AS-BUILTS

REFLECTED CEILING PLAN

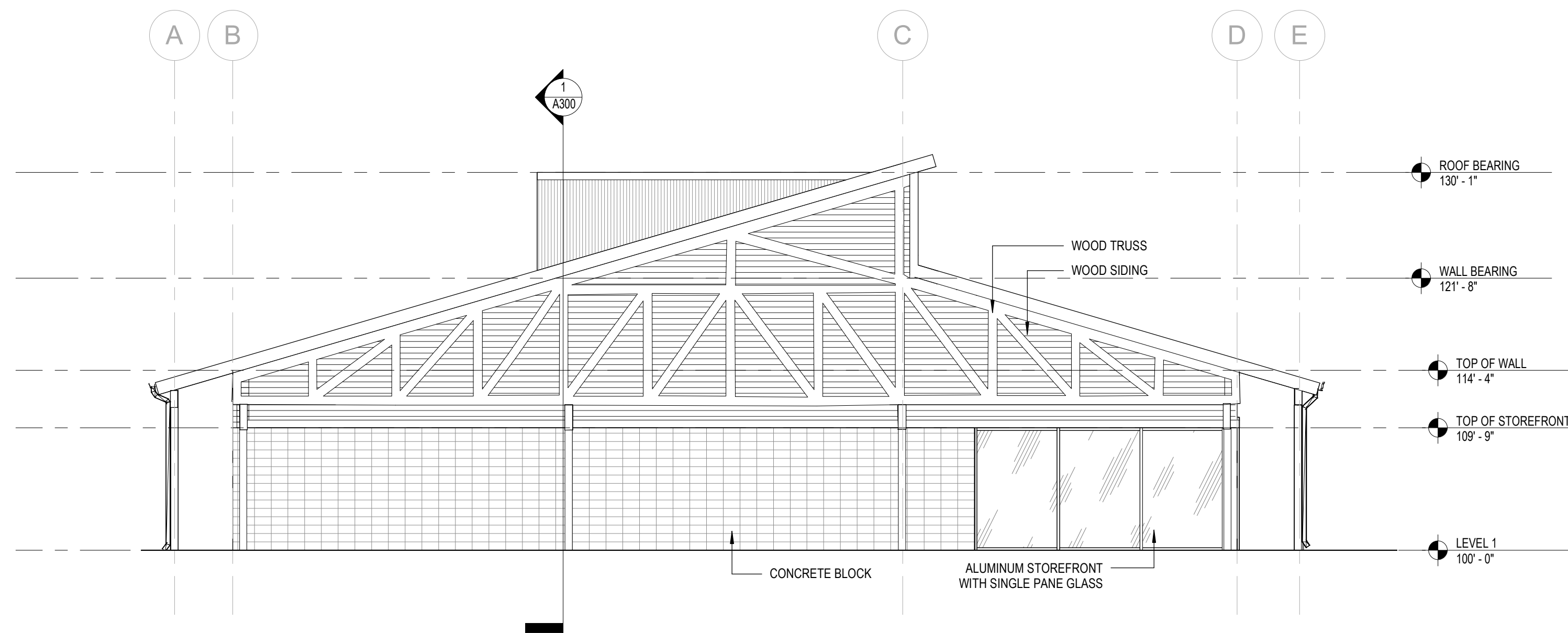
A101

1 REFLECTED CEILING PLAN  
1/8" = 1'-0"

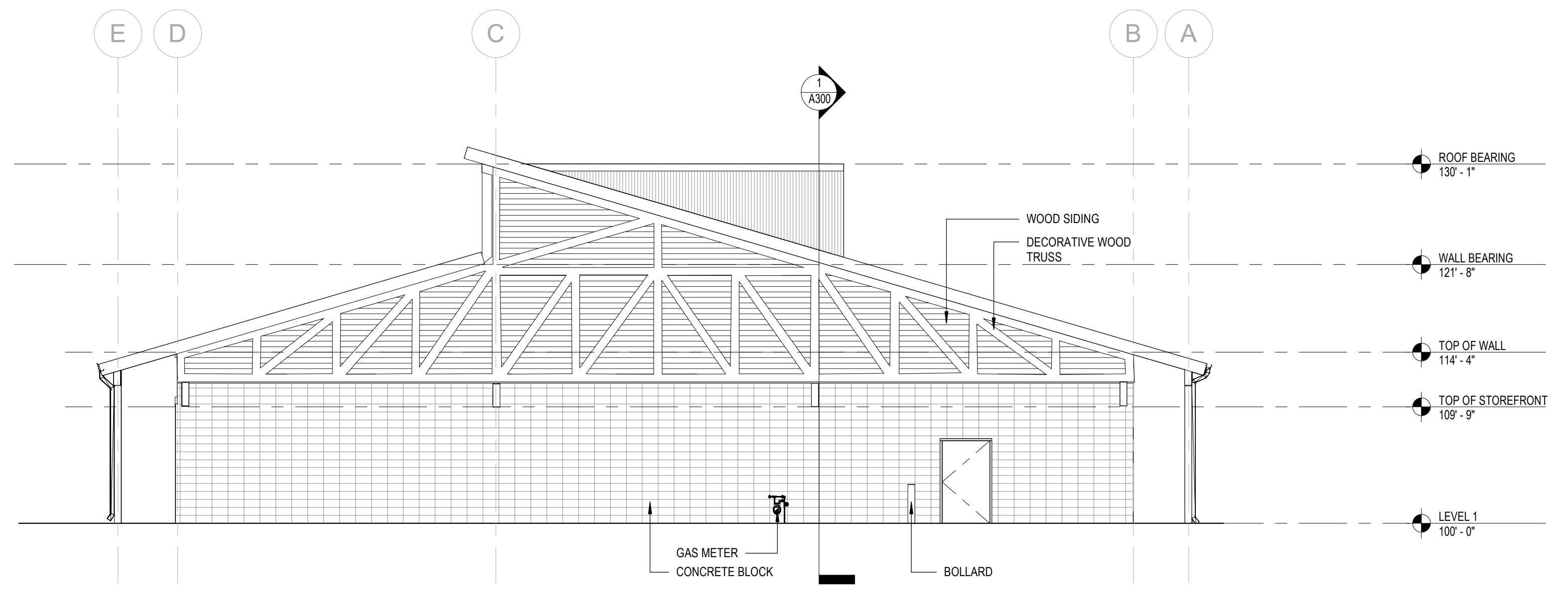
NOT FOR CONSTRUCTION



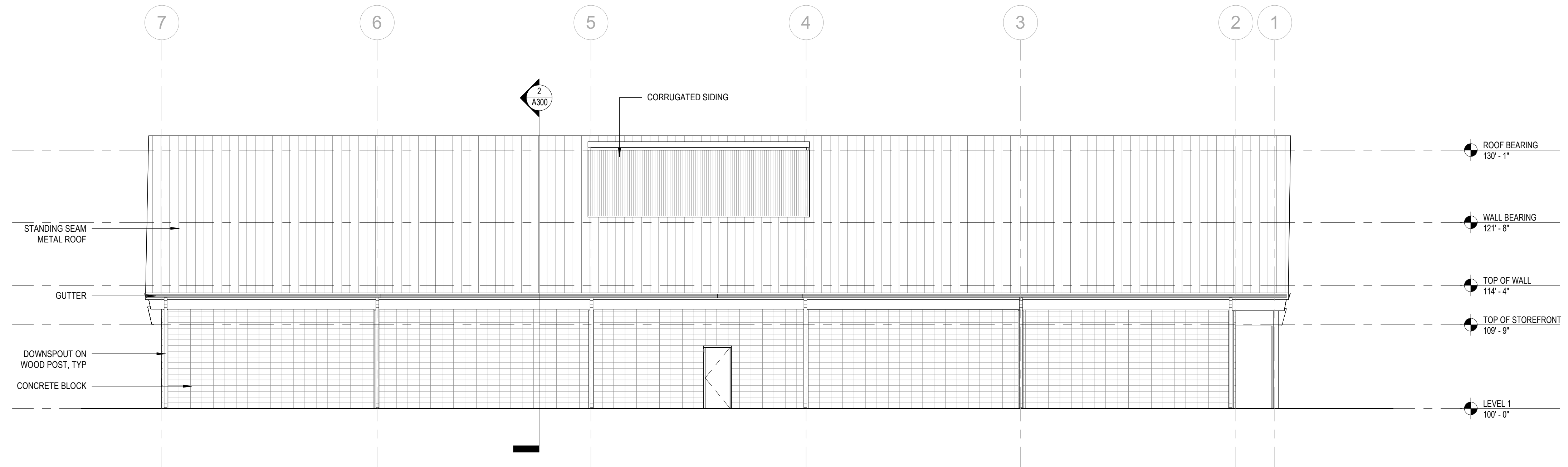
④ SOUTH ELEVATION  
 1/8" = 1'-0"



③ WEST ELEVATION  
 1/8" = 1'-0"



② EAST ELEVATION  
 1/8" = 1'-0"



① NORTH ELEVATION  
 1/8" = 1'-0"

PIER 1  
 30 WEST 900 SOUTH  
 SALT LAKE CITY, 84101

10.08.2019

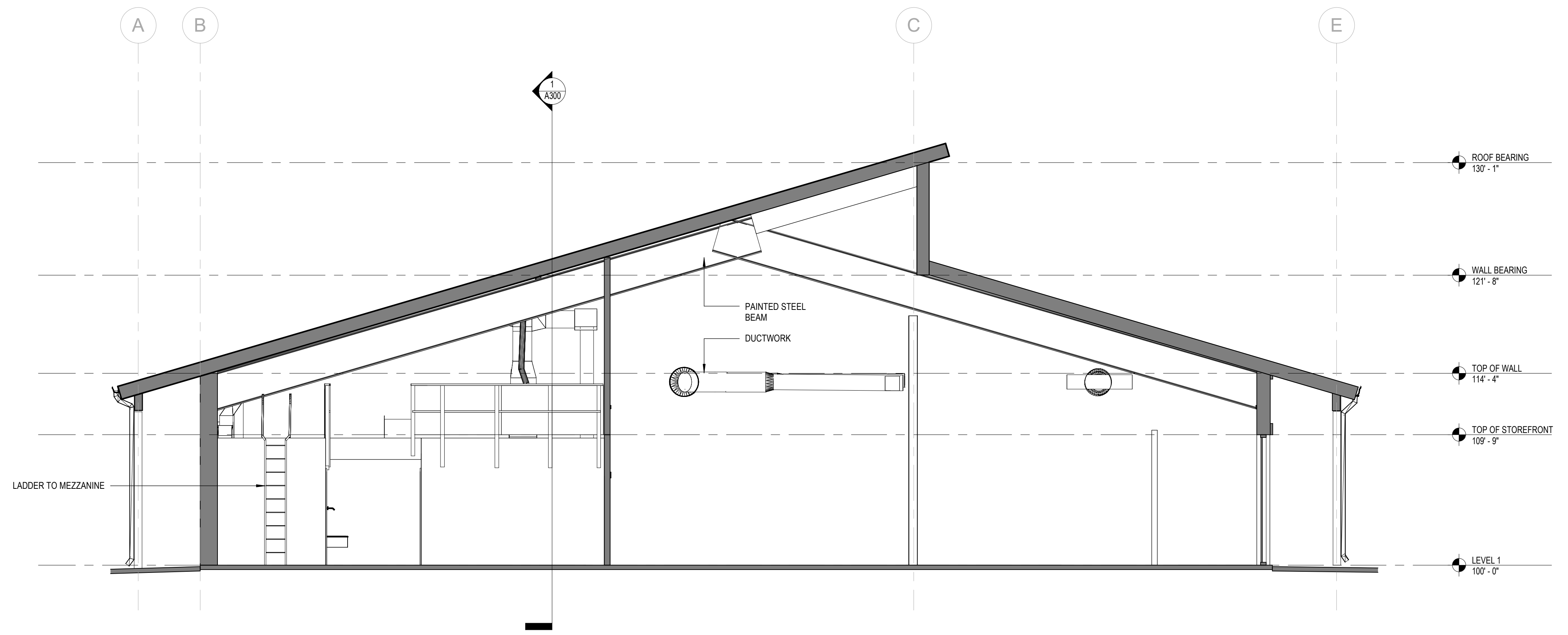
AS-BUILTS

ELEVATIONS

A200

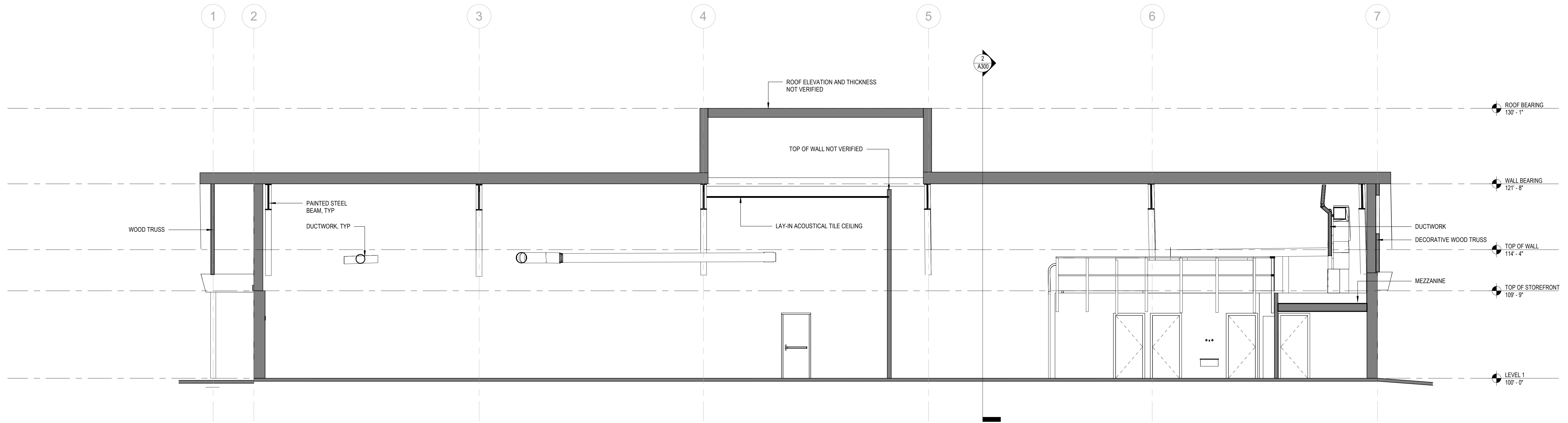
**GENERAL NOTES**

- ELEMENTS THAT ARE OFF-AXIS HAVE BEEN CORRECTED FOR DRAWING CLARITY. CONTRACTOR TO VERIFY FIELD CONDITIONS.
- LAY-IN GRID CEILING AND TRACK LIGHTING HAS NOT BEEN SHOWN. DIMENSIONS PROVIDED ARE APPROXIMATE.



SECTION 2  
3/16" = 1'-0"

NOT FOR CONSTRUCTION



SECTION 1  
3/16" = 1'-0"

**PIER 1**  
30 WEST 900 SOUTH  
SALT LAKE CITY, 84101

10.08.2019

AS-BUILTS

BUILDING SECTIONS

A300