



# Williams Hill Business Center

660 Olive Street | St. Paul, MN 55130

---

**FOR LEASE | 8,032 SF**

**John Ryden**

Senior Vice President

+1 612 723 9313

[john.ryden@cbre.com](mailto:john.ryden@cbre.com)

**Maxx Schindel**

Associate Broker

+1 218 232 6901

[maxx.schindel@cbre.com](mailto:maxx.schindel@cbre.com)

**CBRE**

# Property Overview

46,206

Total Building SF

20'

Clear Height

8,032

Total Available SF

Industrial

Zoning

3,842

Available Office SF

2.74

Acres

3,933

Available  
Warehouse SF

1998

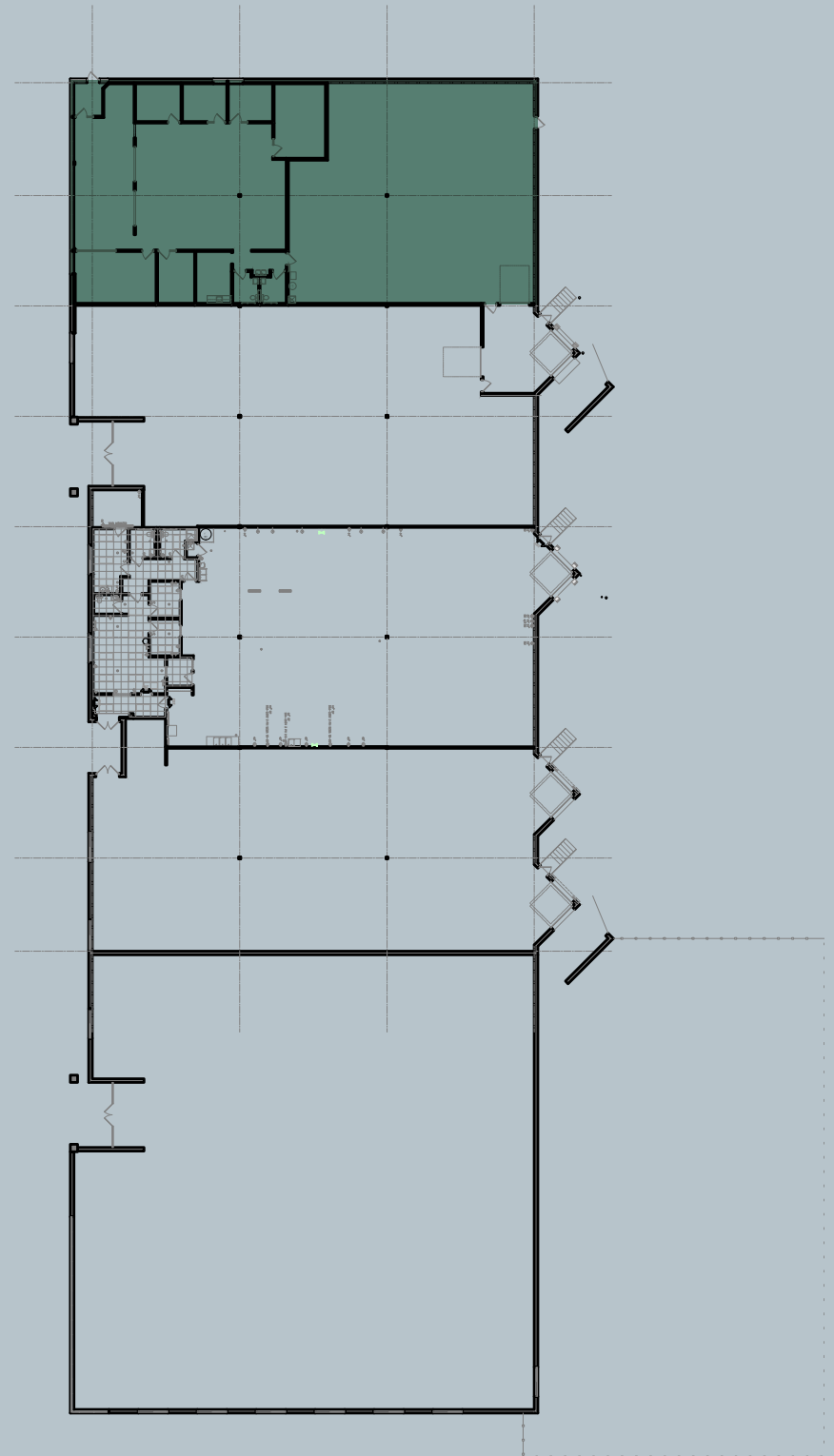
Year Built

1 Dock

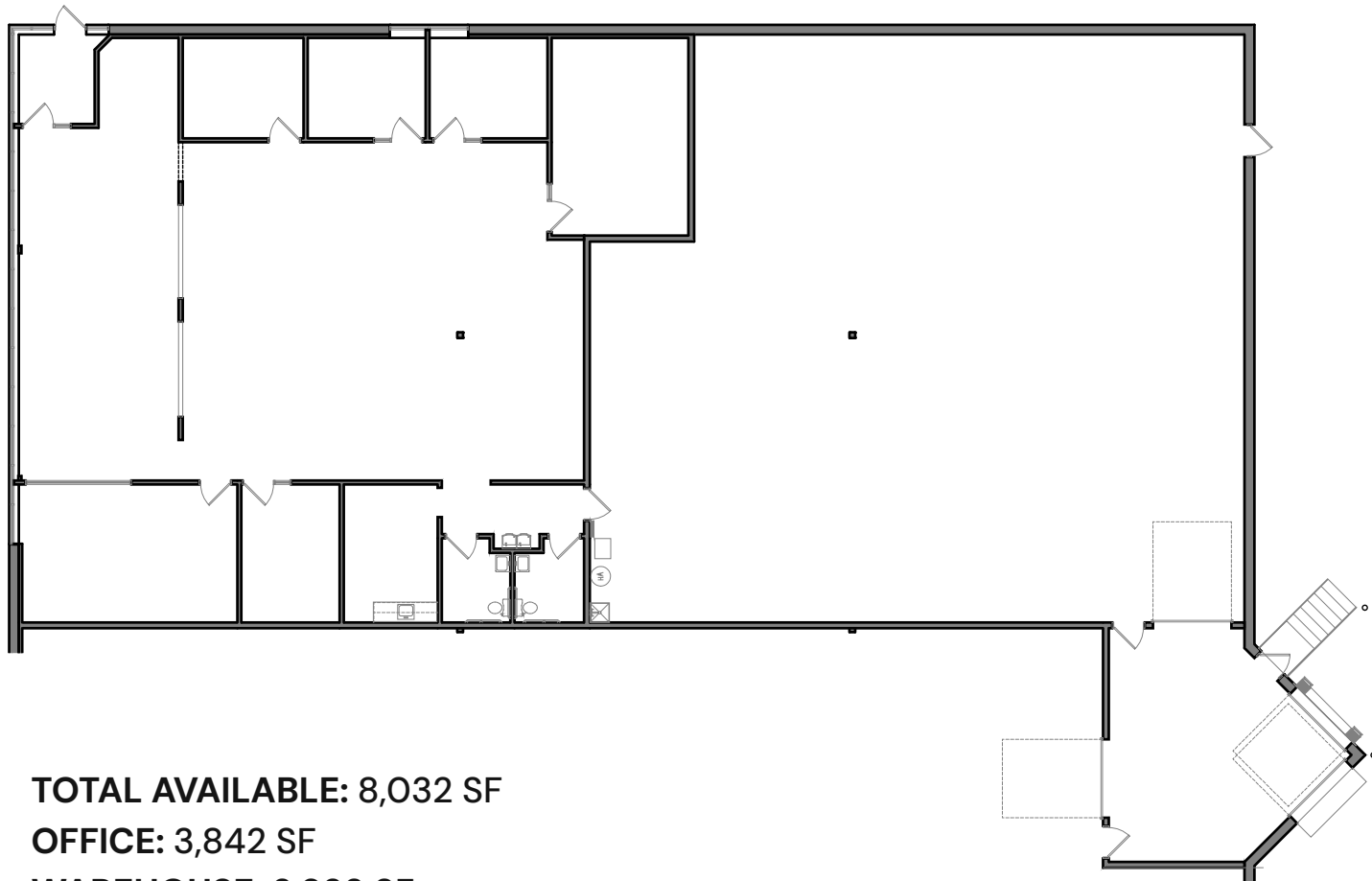
1 shared 4' dock  
door - 257 SF

\$5.30

Est. 2025 Tax/CAM  
PSF



# Floor Plan



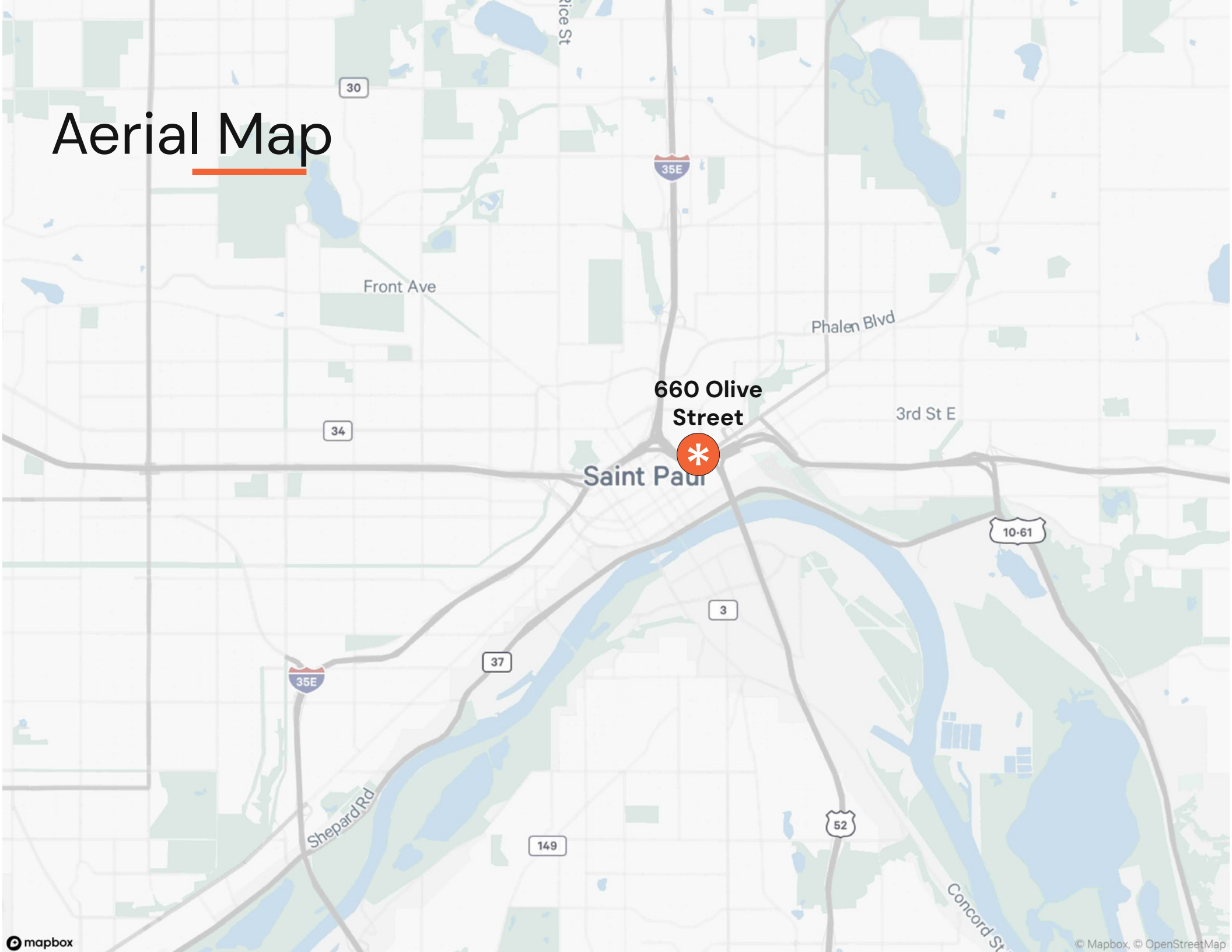
**TOTAL AVAILABLE: 8,032 SF**

**OFFICE: 3,842 SF**

**WAREHOUSE: 3,933 SF**

**1 shared 4' dock door -257 SF**

# Aerial Map





ST. PAUL, MN

# Williams Hill Business Center

## 660 Olive Street | St. Paul, MN 55130

FOR LEASE | 8,032 SF

**John Ryden**

Senior Vice President  
+1 612 723 9313  
john.ryden@cbre.com

**Maxx Schindel**

Associate Broker  
+1 218 232 6901  
maxx.schindel@cbre.com

**CBRE**

© 2025 CBRE, Inc. All rights reserved. This information has been obtained from sources believed reliable but has not been verified for accuracy or completeness. CBRE, Inc. makes no guarantee, representation or warranty and accepts no responsibility or liability as to the accuracy, completeness, or reliability of the information contained herein. You should conduct a careful, independent investigation of the property and verify all information. Any reliance on this information is solely at your own risk. CBRE and the CBRE logo are service marks of CBRE, Inc. All other marks displayed on this document are the property of their respective owners, and the use of such marks does not imply any affiliation with or endorsement of CBRE. Photos herein are the property of their respective owners. Use of these images without the express written consent of the owner is prohibited.