

AVAILABLE FOR SUBLEASE

455 Jimmy Deloach Parkway
300,000 SF

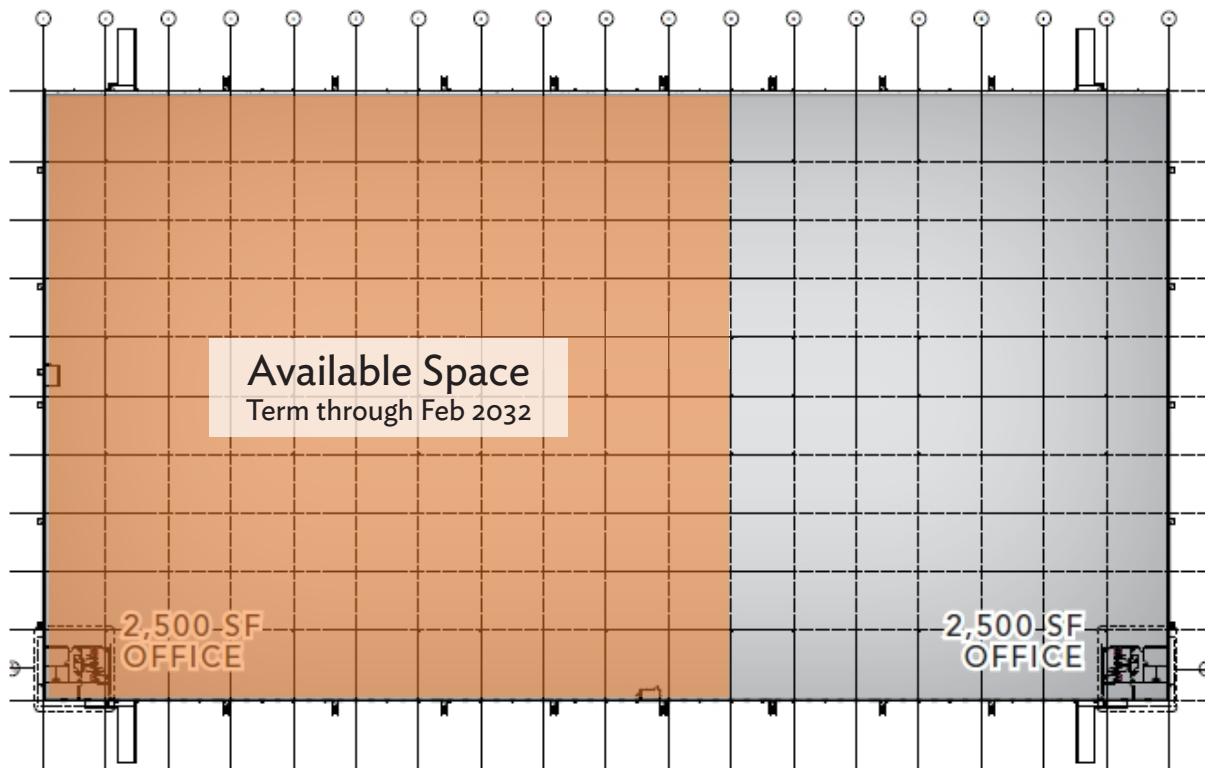
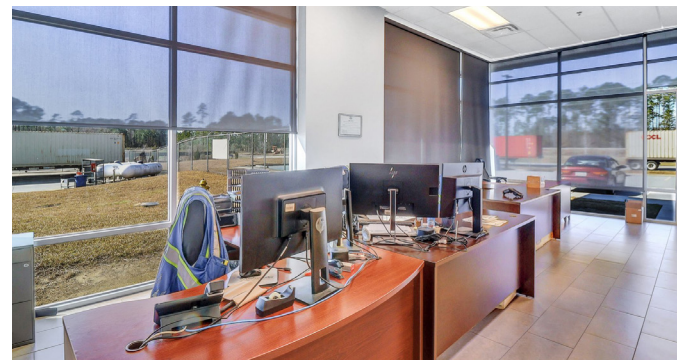
Racking Available



SCOTLAND
WRIGHT
ASSOCIATES



Office Photos:



± 300,000 SF TOTAL
(± 2,500 SF OFFICE)



66 - 9' X 10' DOCK HIGH DOORS



111 - AUTO PARKING SPACES



CROSS DOCK CONFIGURATION



~50% WITH PIT LEVELERS
~50% WITH EDGE-OF-DOCK LEVELERS



8 FORKLIFT CHARGING STATIONS STRATEGICALLY LOCATED



± 36' CLEAR HEIGHT



± 185' TRUCK COURT



COMPREHENSIVE SECURITY SYSTEM IN PLACE



8 - HIGH-VELOCITY FANS (4 ON EACH SIDE)



2 - GRADE-LEVEL ROLL-UP DOORS



24 ROWS - VNA RACKING
24 ROWS - STANDARD PALLET RACKING



Truck Parking
(80 Total)



Tom

Distance to Port

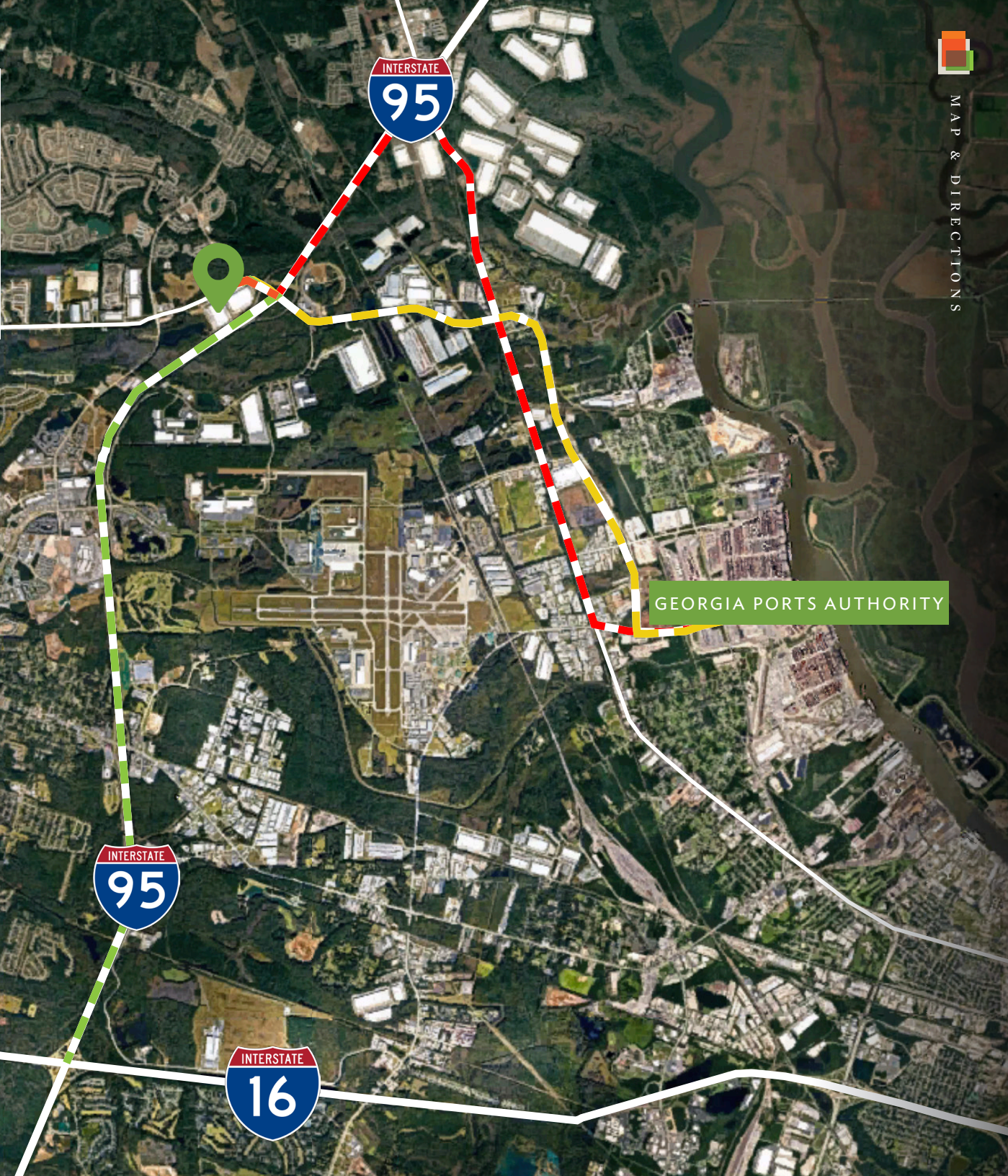
~6.9 MILES VIA JIMMY DELOACH PKWY 

~9.1 MILES VIA AUGUSTA RD 

Distance to Highway

~0.63 MILES TO INTERSTATE 95 

~7.7 MILES TO INTERSTATE 16 



GEORGIA PORTS AUTHORITY

Term through February 2032



PROPERTY PHOTOS



455 Jimmy Deloach Parkway

300,000 SF | Sublease

PROPERTY



Contacts

BARRETT ATKINS
678.477.8775
BARRETT@SCOTLANDWRIGHT.COM

SCOTT O'HALLORAN
404.771.2063
SOHALLORAN@SCOTLANDWRIGHT.COM

ROBERT FEATHERS
310.633.0990
ROBERT.FEATHERS@KIDDER.COM



SCOTLAND
WRIGHT
ASSOCIATES