

# FOR SALE

## Mixed-Use Development

San Jacinto, CA  
NWC Ramona Expressway & Lyon Avenue  
Excellent Development Opportunity



**SELLER PROCESSING A SUBDIVISION THROUGH CITY  
WITH CITY OF SAN JACINTO SUPPORT TO INCLUDE:**

- Approximately 42.78 acres gross
- Signalized intersection at Ramona Expressway & Lyon Avenue
- Located in strong, emerging traffic corridor
- APN 436-070-006 & 018
- Zoning: Call for zoning information
- Tentative map in process (subject to change – not approved)
  - a.  $\pm$  157 residential lots (subject to change)
  - b. Commercial lot at intersection of Lyon Avenue & Ramona Expressway ( $\pm$ 3.6 acres-subject to change)
  - c. Two (2) Open Space/Water Quality Mitigation Lots

## CALL AGENT FOR ASKING PRICE

**FOR ADDITIONAL INFORMATION CONTACT**  
**Guy W. Excell or Howard B. Rosenthal**  
**(951) 658-2559**

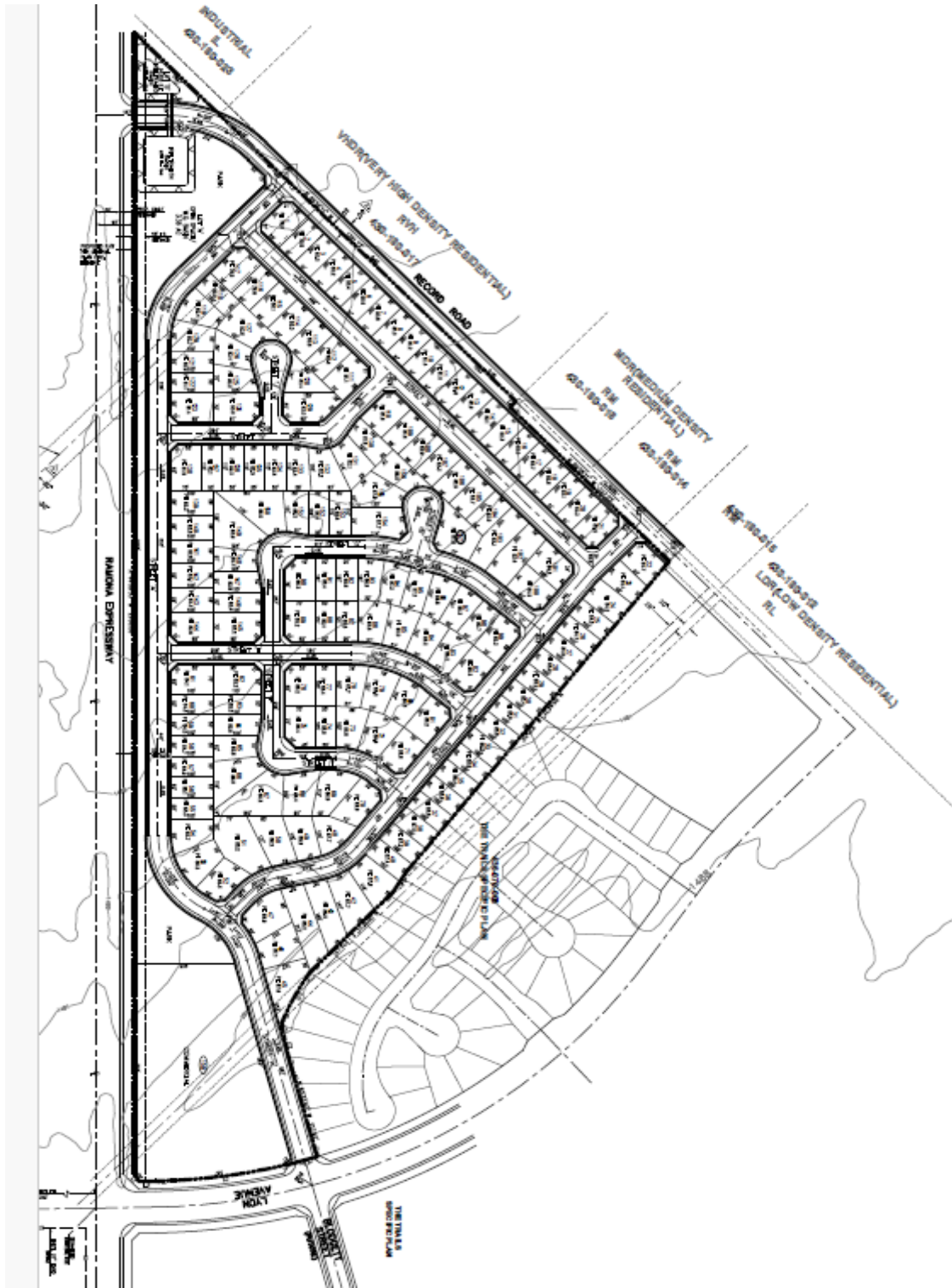
**DRE License No. 01138381**



**Rosenthal & Excell**  
Commercial Real Estate Services

1600 East Florida Avenue, Suite 110  
Hemet, California 92544  
(951) 658-2559 • Fax: (951) 658-7690  
email: [hrg@rosenthalexcell.com](mailto:hrg@rosenthalexcell.com)

## TENTATIVE TRACT MAP 38019



**FOR ADDITIONAL INFORMATION CONTACT**

**Guy W. Excell or Howard B. Rosenthal**

**(951) 658-2559**

**DRE License No. 01138381**



**Rosenthal & Excell**  
Commercial Real Estate Services

1600 East Florida Avenue, Suite 110  
Hemet, California 92544  
(951) 658-2559 • Fax: (951) 658-7690  
email: [hrg@rosenthalexcell.com](mailto:hrg@rosenthalexcell.com)