



SUBLEASE



Metcalf & Company, Inc.

savills.us

DISTRIBUTION & LOGISTICS HUB

MOBILE LOGISTICS PARK - LOT A

+/- 4.74 ACRES AVAILABLE
4689 COLGATE DRIVE, MOBILE, AL, 36619

SPACE PROFILE

+/- 4.74

Acres Available

+/- 2,000

Building SF

Immediate

Availability

Contact for Pricing

Sublease Rate

Thru 1/31/29

Sublease Term

KEY HIGHLIGHTS

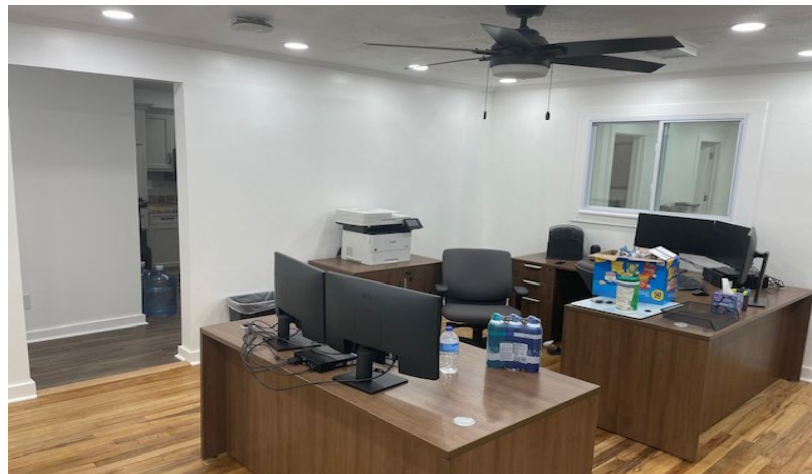
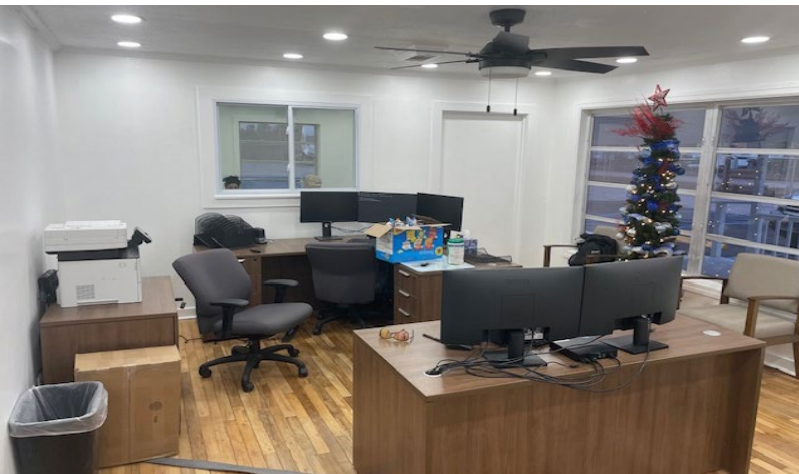
- Located on Corner of Colgate Drive and Rangeline Road SR (Hwy 193)
- Strategic position: Southwest quadrant of Highway 193 and Interstate 10, Exit 13
- Building: 2,000± SF newly renovated office building/driver's lounge

SITE FEATURES

- Fully improved with crushed limestone, lighting, and fencing
- Secure perimeter with 6' chain-link fence, three strands of barbed wire, and six strands of electrified wire with solar backup
- Concrete trailer landing gear ribbons
- 24-hour access keypad
- Two access points: 45' electrically operated sliding gate with a man gate and 20' double swing gate



4689 COLGATE DRIVE



Adam Metcalfe, SIOR
Vice President
+1 251 432 2600
adam@metcalfecoco.com

Charles Brewer
Vice Chairman
+1 972 739 2211
cbrewer@savills.us

Brian Czarnecki
Managing Director
+1 312 595 2980
bczarnecki@savills.us

The information contained in this communication has been obtained from a variety of sources believed to be reliable but has not been verified. NO WARRANTY OR REPRESENTATION, EXPRESS OR IMPLIED, IS MADE AS TO THE CONDITION OF THE PROPERTY OR ACCURACY OR COMPLETENESS OF THE INFORMATION CONTAINED HEREIN AND SAME IS SUBMITTED SUBJECT TO ERRORS, OMISSIONS, CHANGE OF PRICE, RENTAL OR OTHER CONDITIONS, WITHDRAWAL WITHOUT NOTICE AND TO ANY SPECIFIC CONDITIONS IMPOSED BY THE PROPERTY OWNER OR LESSOR.