

# CHELSEA ARTS CENTRE

- Prime West Chelsea location between West 24th and 25th Streets — steps from The High Line and Hudson River Park
- Several units available ranging in size from 1,198 rsf to 2,874 rsf
- Building features 24/7 access, operable windows, 3 elevators (1 oversized), tenant-controlled HVAC and high quality interior finishes
- Walking distance to Hudson Yards, Chelsea Waterside Park, Chelsea Dog Park, Pier 62 Skatepark, Pier 62 Carousel, Hudson River Park, Pier 63, The High Line, Chelsea Piers, and Little Island at Pier 55

**210 11<sup>TH</sup> AVE**

[WWW.210ELEVENTH.COM](http://WWW.210ELEVENTH.COM)

November 2024

# CHELSEA ARTS CENTRE

210 11<sup>TH</sup> AVE

ABS Partners Real Estate, as the exclusive leasing and managing agent is pleased to offer the following opportunities for lease:

## Current Availabilities

Unit	Size	Possession
Suite 401:	2,550 rsf - 9 Windows providing west exposure and Hudson River views, exposed ceiling - Fully built-out office and showroom space with (2) glass-front offices, and open area	Immediate
Suite 501:	1,198 rsf - 3 Windows providing south exposure; bright, move-in condition space, (1) small interior office with pocket-door closure, and multiple wall mounted open shelving and doored cabinets	Immediate
Suite 503:	1,949 rsf (Lease Out) - 6 Windows providing north exposure	March 1, 2025
Suite 603:	2,874 rsf - 8 Windows providing south and east exposure; fully built-out wide open space	Immediate

- Comments:
- Boutique building offering flexible lease terms - Good city and river views
  - All units feature polished concrete floors, operable windows, and exposed ceilings
  - Most spaces are wide open with creative lighting and pantry
  - Some spaces have offices and conference rooms
  - Prime Chelsea neighborhood - Hudson Yards vicinity
  - Spectrum (formerly Time Warner) & Verizon data/telecom
  - Bike Room with storage for helmets and bike air pump

### Join Fashion Tenants such as:

Stella McCartney, Jonathan Simkhai, Gabriela Hearst, Isabel Marant, Mackage, Marc Cain, Rainbowwave, Citizens of Humanity, Michael Stars

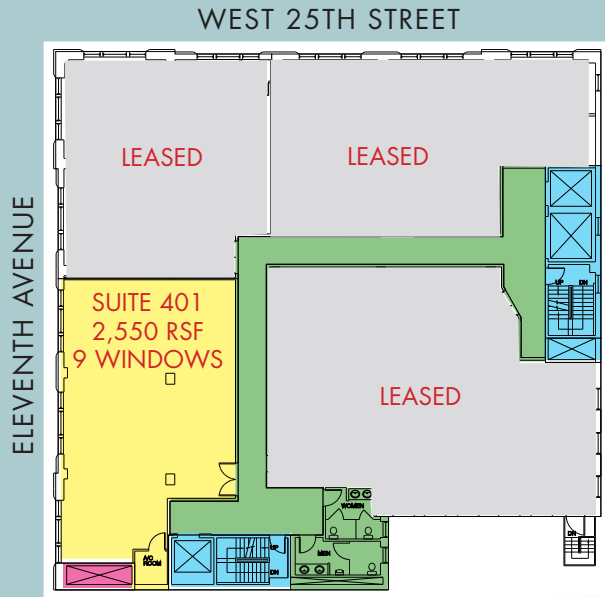
### Join Art Tenants such as:

Sears-Peyton Gallery, Amsterdam Whitney International Fine Art  
Betsy Senior Fine Art, Minagawa Art Lines



# 210 ELEVENTH AVENUE

Suite 401: 2,550 rsf- 9 Windows provide west exposure and Hudson River views (2) glass-front offices, fully built-out office and showroom space with (2) glass-front offices and open area, exposed ceiling



(for descriptive purposes only; not to scale.)



Furniture shown for concept only



For further information and/or inspection, please contact:

**Audrey Novoa**

Licensed Associate Real Estate Broker  
212.400.6091 | anovoa@absre.com

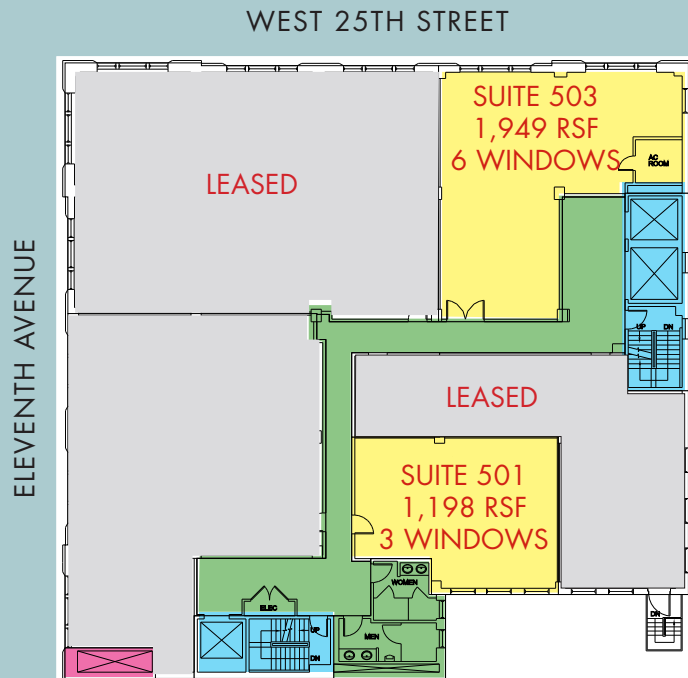
**Ben Waller**

Licensed Associate Real Estate Broker  
212.400.9515 | bwaller@absre.com

## 210 ELEVENTH AVENUE

Suite 501: 1,198 rsf - 3 Windows providing south exposure; bright, move-in condition space, (1) small interior office with pocket-door closure, and multiple wall mounted open shelving and doored cabinets

[Click to View Virtual Tour](#)



(for descriptive purposes only; not to scale.)



For further information and/or inspection, please contact:

**Audrey Novoa**

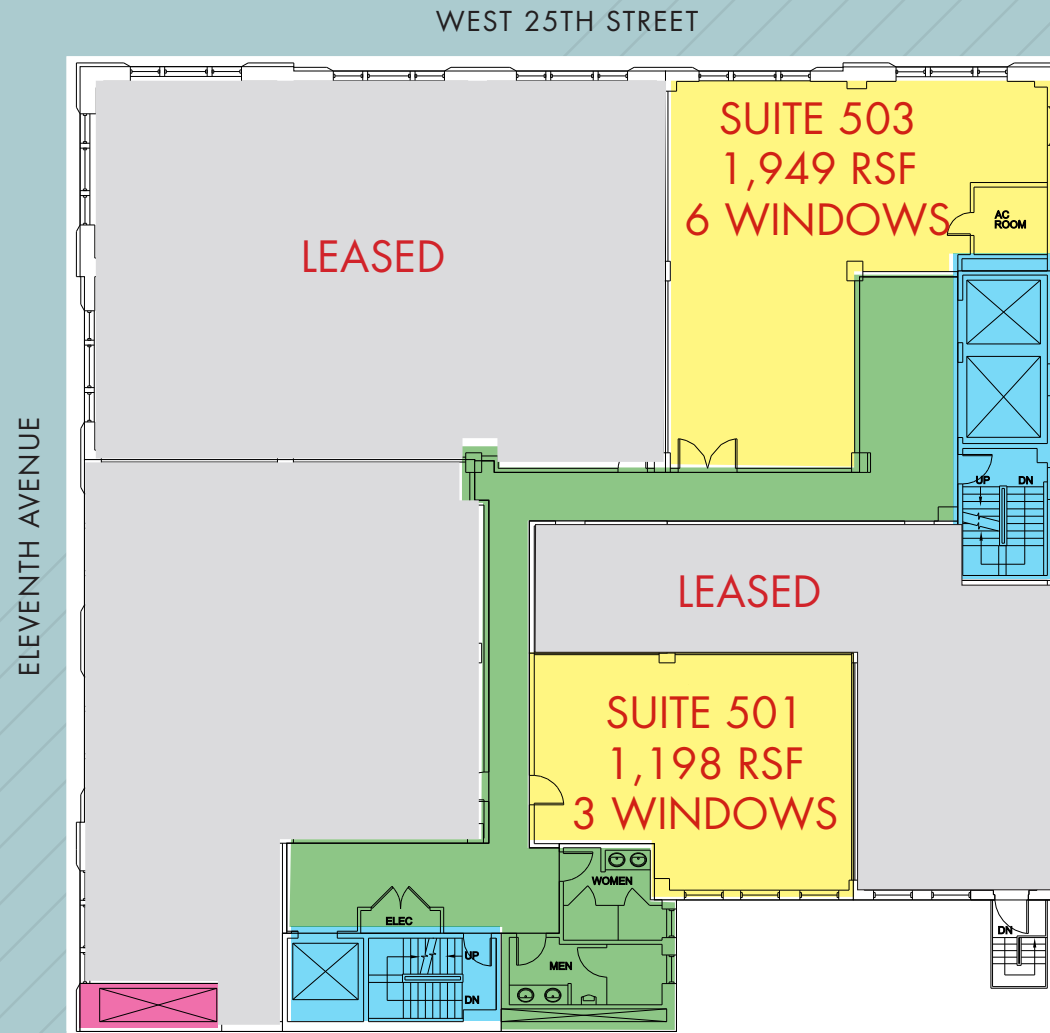
Licensed Associate Real Estate Broker  
212.400.6091 | anovoa@absre.com

**Ben Waller**

Licensed Associate Real Estate Broker  
212.400.9515 | bwaller@absre.com

210 ELEVENTH AVENUE

Suite 503: 1,949 rsf- 6 Windows providing north exposure



(for descriptive purposes only; not to scale.)



For further information and/or inspection, please contact:

**Audrey Novoa**

Licensed Associate Real Estate Broker  
212.400.6091 | anovoa@absre.com

**Ben Waller**

Licensed Associate Real Estate Broker  
212.400.9515 | bwaller@absre.com



210 ELEVENTH AVENUE

Suite 603: 2,874 rsf - 8 Windows providing south and east exposure; Fully built-out wide open space

[Click to View Virtual Tour](#)



(for descriptive purposes only; not to scale.)



For further information and/or inspection, please contact:

**Audrey Novoa**

Licensed Associate Real Estate Broker  
212.400.6091 | [anovoa@absre.com](mailto:anovoa@absre.com)

**Ben Waller**

Licensed Associate Real Estate Broker  
212.400.9515 | [bwaller@absre.com](mailto:bwaller@absre.com)



For further information and/or inspection, please contact:

**Audrey Novoa**  
 Licensed Associate Real Estate Broker  
 212.400.6091  
 anovoa@absre.com

**Ben Waller**  
 Licensed Associate Real Estate Broker  
 212.400.9515  
 bwaller@absre.com

**WWW.210ELEVENTHAVE.COM**



Hudson River Park



High Line



Hudson Yards