

Bishop J.T. Walker Center
Holy Comforter Episcopal
Church
701 Oglethorpe Street, NW
Washington, DC

Up to 2,916 Square Feet
For Lease

Lamont Bessicks

Director

202.585.1143 Office

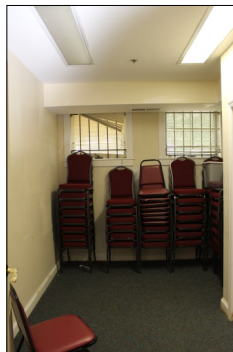
202.285.8279 Mobile

lbessicks@lewisreservices.com

LRES, LLC

529 14th St, NW, #901, WDC 20045

The Bishop John Thomas Walker
National Learning Center



Disclaimer: While Lewis Real Estate Services and its affiliates believe the information contained herein to be true and accurate, they make no claims or warranties. Any prospective tenant should conduct a thorough, independent due diligence. LRES, LLC has been retained and assigned by the owner to lease this space.

Details

Available Space: Up to 2,916 SF

Asking Rent: \$4,800/Mo., Full Service

Term: Minimum of 3 Years

Available: Immediately

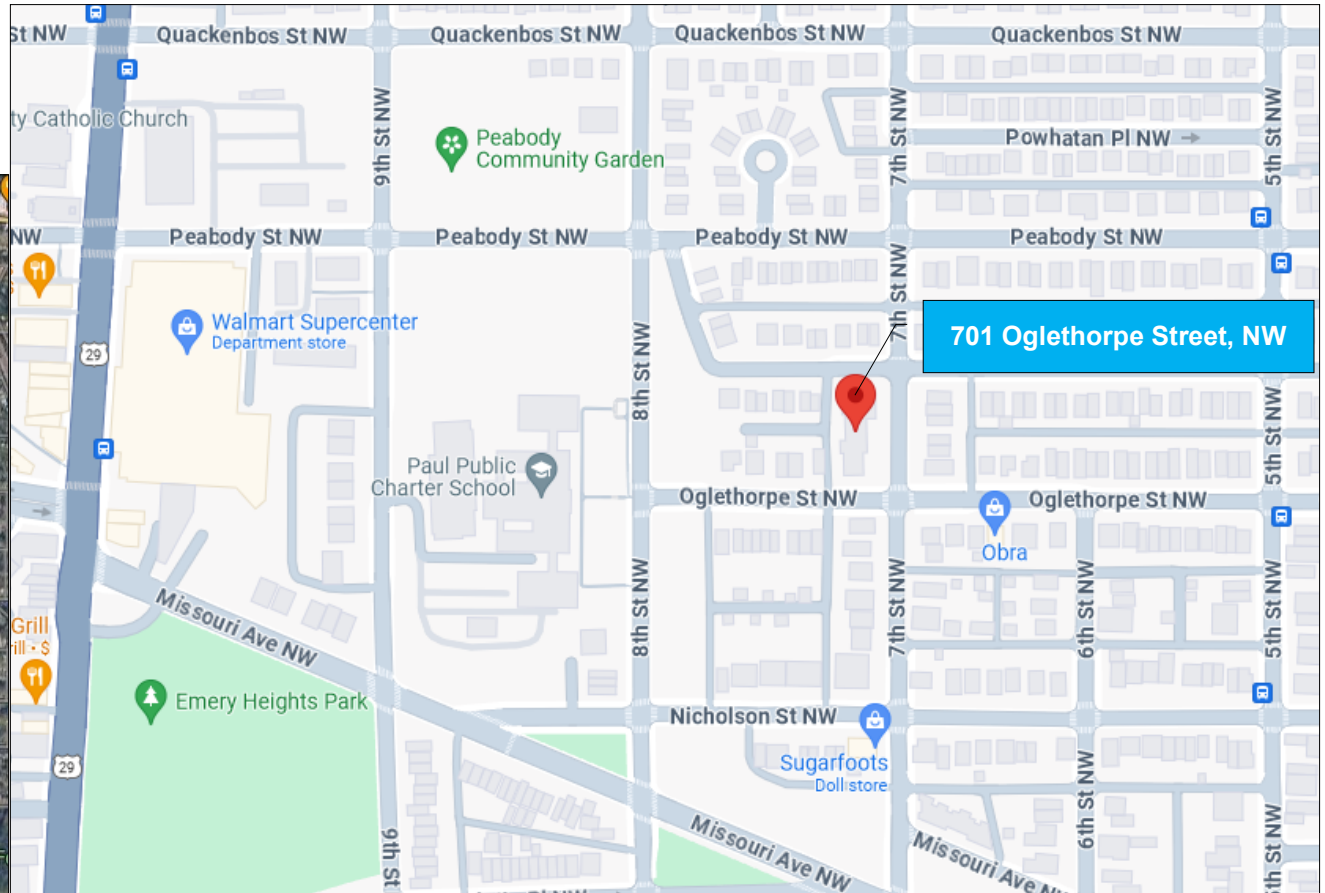
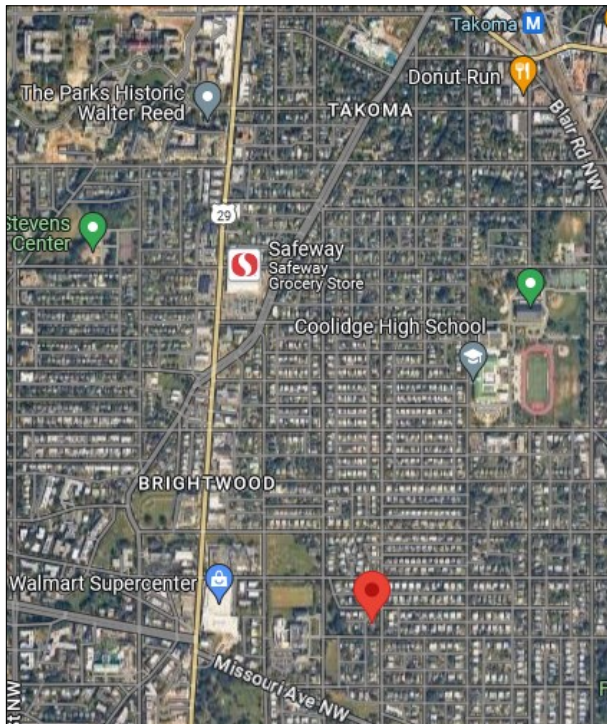
Delivery Condition: As-is

Space Details:

- ◆ Carpeted Flooring
- ◆ Built-in Video Presentation
- ◆ Drop-Down Screen
- ◆ Fully Sprinklered
- ◆ Prep-Kitchen & Pass-through (No Gas)
- ◆ Internal Handicap Lift
- ◆ High Ceilings
- ◆ Presentation Stage

Building Features:

- ◆ Four Surface Parking Spaces
- ◆ Handicap Accessible
- ◆ Men & Women Facilities in Common Area
- ◆ All Electric Power
- ◆ Neighborhood Setting
- ◆ Walmart Supercenter Nearby
- ◆ 3 Blocks East of Georgia Avenue, NW
- ◆ 2 Blocks North of Missouri Avenue, NW



Disclaimer: While Lewis Real Estate Services and its affiliates believe the information contained herein to be true and accurate, they make no claims or warranties. Any prospective tenant should conduct a thorough, independent due diligence. LRES, LLC has been retained and assigned by the owner to lease this space.

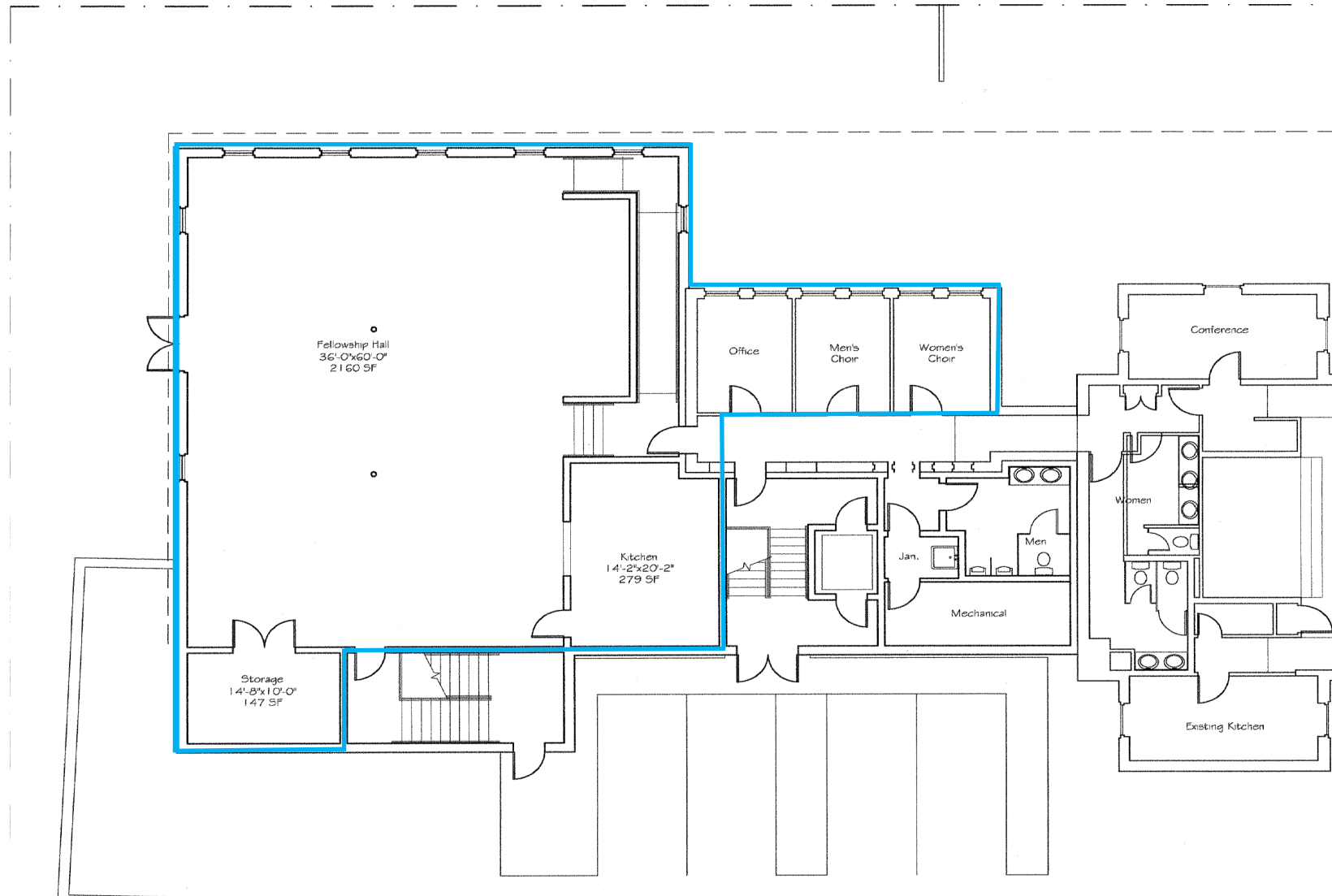
Bishop John Thomas Walker Center

Floor Plan

2,160 SF of Auditorium Space
147 SF of Storage Space

279 SF of Kitchen Space
330 SF of Individual Offices

2,916 Total Rentable Square Feet



Disclaimer: While Lewis Real Estate Services and its affiliates believe the information contained herein to be true and accurate, they make no claims or warranties. Any prospective tenant should conduct a thorough, independent due diligence. LRES, LLC has been retained and assigned by the owner to lease this space.