

FOR LEASE | LAKEVIEW PLAZA

±1,330 - 1,440 SF AVAILABLE

23412 Moulton Parkway, Laguna Hills, CA

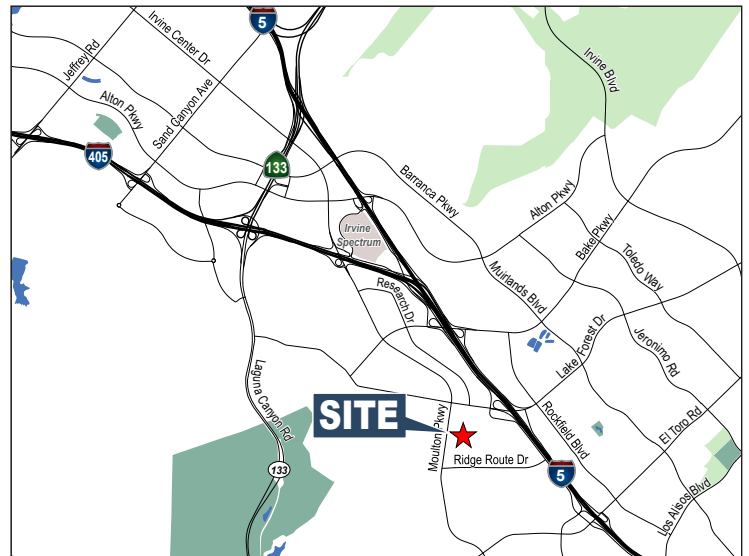
Voit

REAL ESTATE SERVICES



Features:

- 2-Story Cape Cod Style Office Building w/Lake Views & Park Like Setting
- Moulton Parkway Frontage
- Immediate Proximity to Various Retail Amenities
- Great 5 & 405 Freeway Access
- 4:1 Parking
- \$1.85 Modified Gross
- Tenant Pays Janitorial & Electricity
- All Units to be Available End of February



SAM OLMSTEAD

Vice President | Partner

Lic #01186543

949.263.5337

solmstead@voitco.com

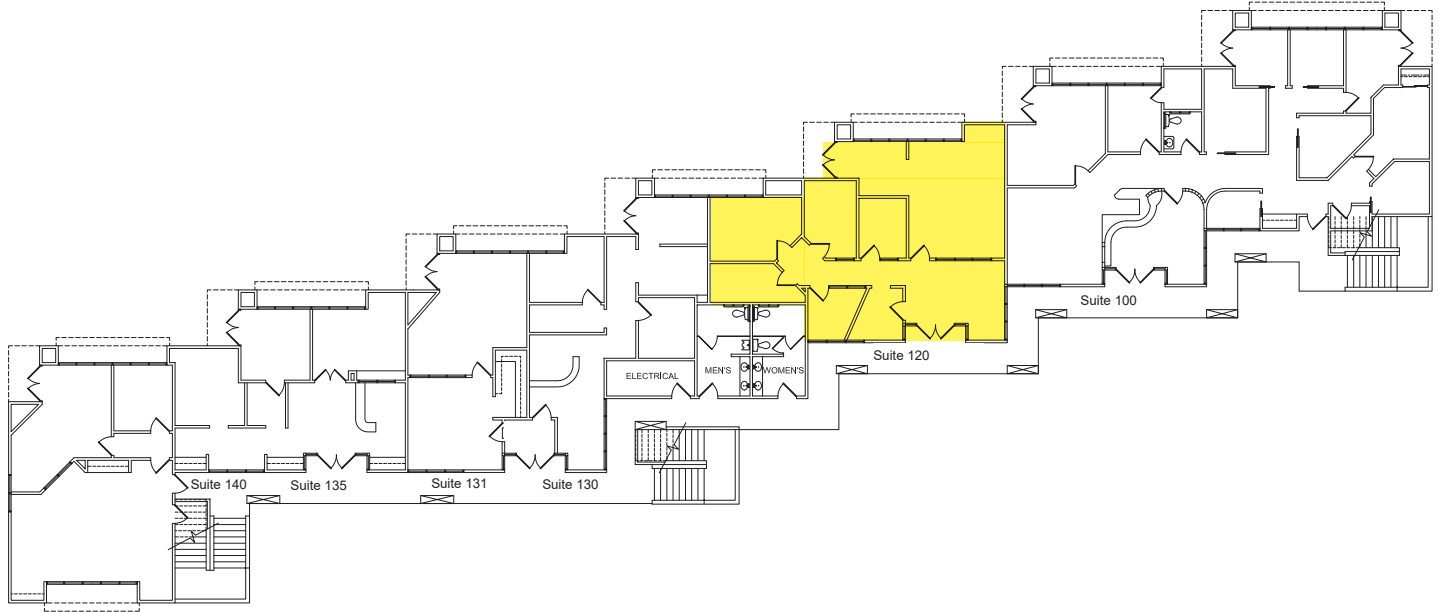
Property Touring Guidelines >

FOR LEASE | LAKEVIEW PLAZA

±1,330 - 1,440 SF AVAILABLE

23412 Moulton Parkway, Laguna Hills, CA

1ST FLOOR - FLOOR PLAN



AVAILABILITES

Suite	Size	Description
120	1,330 SF	Reception, Open Area, 3 Offices & Restroom

SAM OLMSTEAD
Vice President | Partner
Lic #01186543
949.263.5337
solmstead@voitco.com

Property Touring Guidelines >

Voit
REAL ESTATE SERVICES

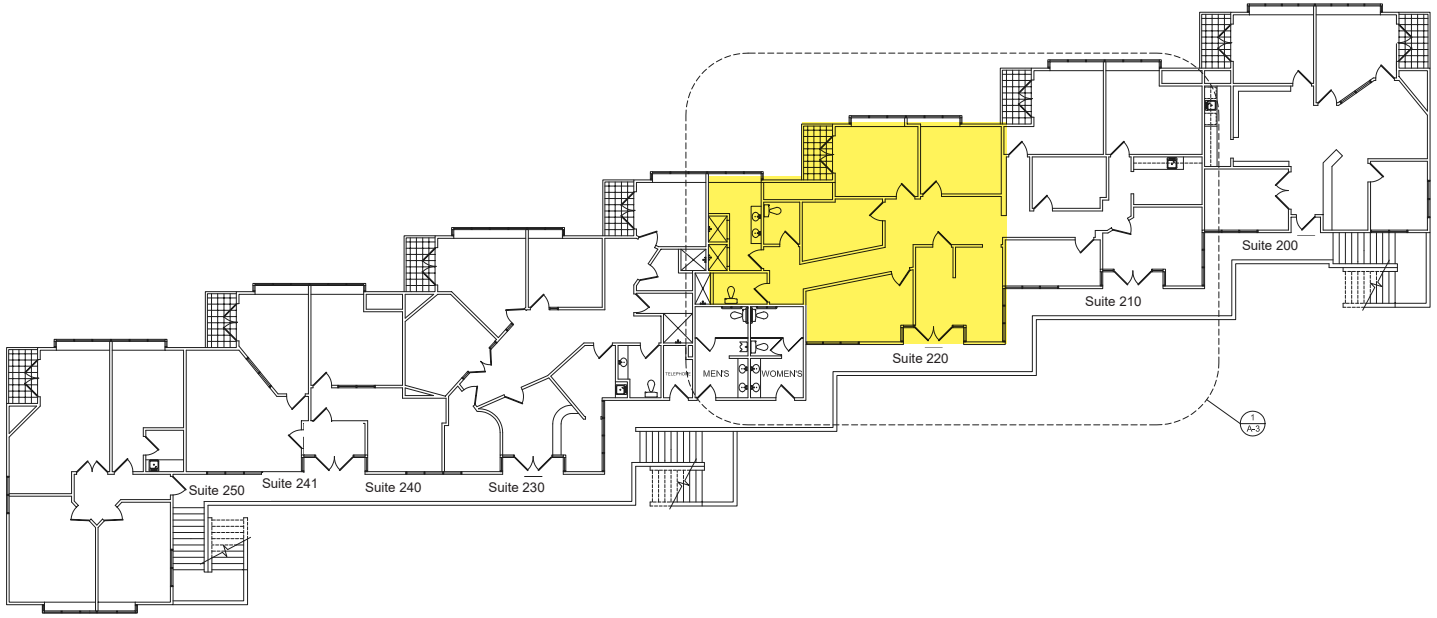
2020 Main Street, Suite 100, Irvine, CA 92614 • 949.851.5100 • 949.261.9092 Fax • Lic #01333376 | www.voitco.com

FOR LEASE | LAKEVIEW PLAZA

±1,330 - 1,440 SF AVAILABLE

23412 Moulton Parkway, Laguna Hills, CA

2ND FLOOR - FLOOR PLAN



AVAILABILITES

<i>Suite</i>	<i>Size</i>	<i>Description</i>
220	1,440 SF	Reception, 4 Offices, 2 Restrooms & Shower

SAM OLMSTEAD
Vice President | Partner
Lic #01186543
949.263.5337
solmstead@voitco.com

Property Touring Guidelines >

Voit
REAL ESTATE SERVICES

2020 Main Street, Suite 100, Irvine, CA 92614 • 949.851.5100 • 949.261.9092 Fax • Lic #01333376 | www.voitco.com

CORFAC
International

Licensed as a Real Estate Salesperson by the CA Bur of Real Estate. The information contained herein has been obtained from sources we deem reliable. While we have no reason to doubt its accuracy, we do not guarantee it. ©2021 Voit Real Estate Services, Inc. All Rights Reserved. Real People. Real Solutions.® is a registered trademark of Voit Real Estate Services.