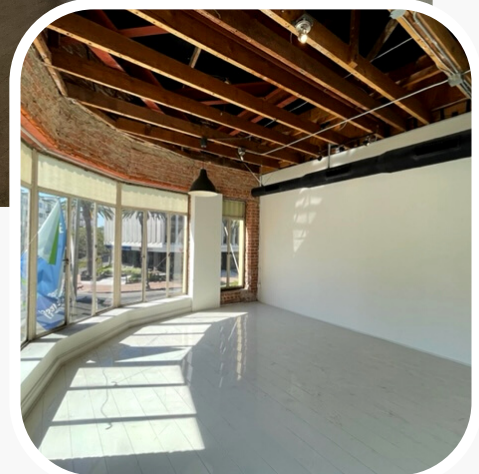


Wilshire Hauser Building presents

CREATIVE SPACES FOR LEASE!

Sizes available from
600 sq. ft to 3,400 sq. ft



Property Overview

Restored high profile historical building situated in the center of the exploding mid-Wilshire/Miracle Mile cultural corridor. Close to bars, coffee houses, restaurants, museums (LACMA, La Brea Tar Pits Museum, Peterson Auto Museum, Academy Museum of Motion Pictures), entertainment venues (El Rey Theater, The Wiltern, Brickroom LA), and employment centers (SAG-AFTRA, et al)

Space Amenities Include

- Exposed brick and raised ceilings
- Decorative flooring
- Floor to ceiling windows
- Fully air conditioned
- Kitchen (Suite C)
- Men and women's bathrooms
- WiFi available
- Security building
- Unobstructed views throughout

Contact Scott Lane

CalDRE #00788582



(760) 641-5469



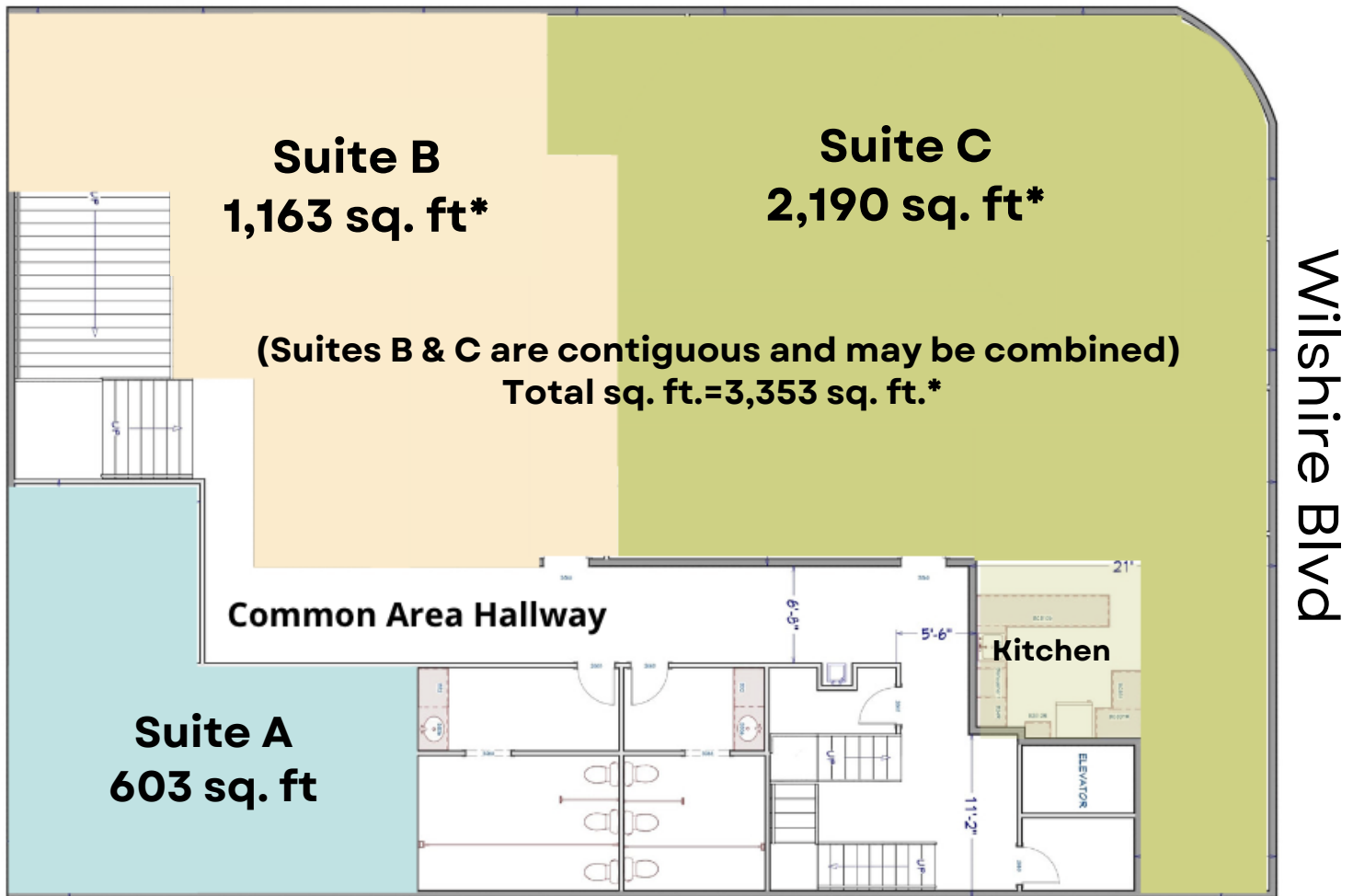
highwood.scottlane@gmail.com



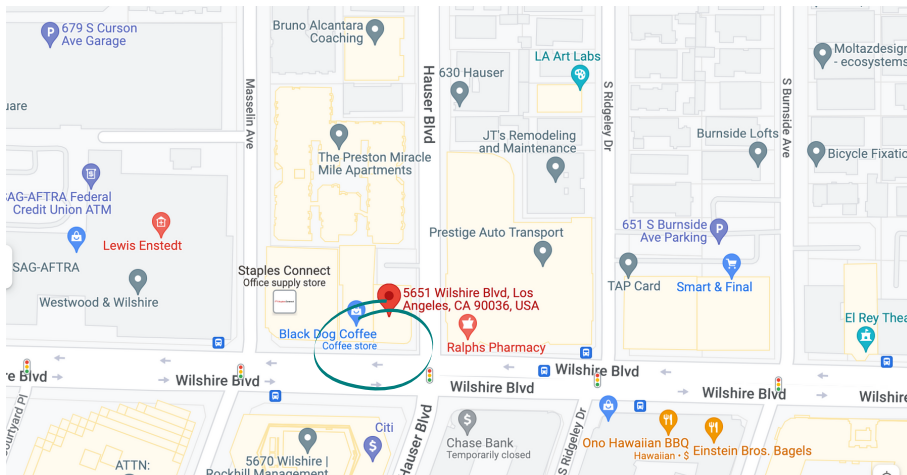
www.wilshirehauserstudios.com

Floor Plan

Hauser Blvd



Note: Above square footages are net and DO NOT include common areas (hallways, stairs, bathrooms, entries).



More Info



5651 Wilshire Blvd, Los Angeles, CA 90036