



NEARBY TENANTS



PROPERTY FEATURES

- 4,318 SF Available
- \$0.55 PSF NNN Shop (As is Dead Storage)
- \$2k/mo Yard (approximately .33 acres)
- Fully Fenced
- 4 Garage Doors
- Great Access to I-15
- 36,000 AADT - 12th Street

AREA DEMOGRAPHICS

	1 MILE	3 MILE	5 MILE
Population	6,573	74,024	153,520
Households	1,975	27,111	54,662
Income	\$80,832	\$73,108	\$84,489

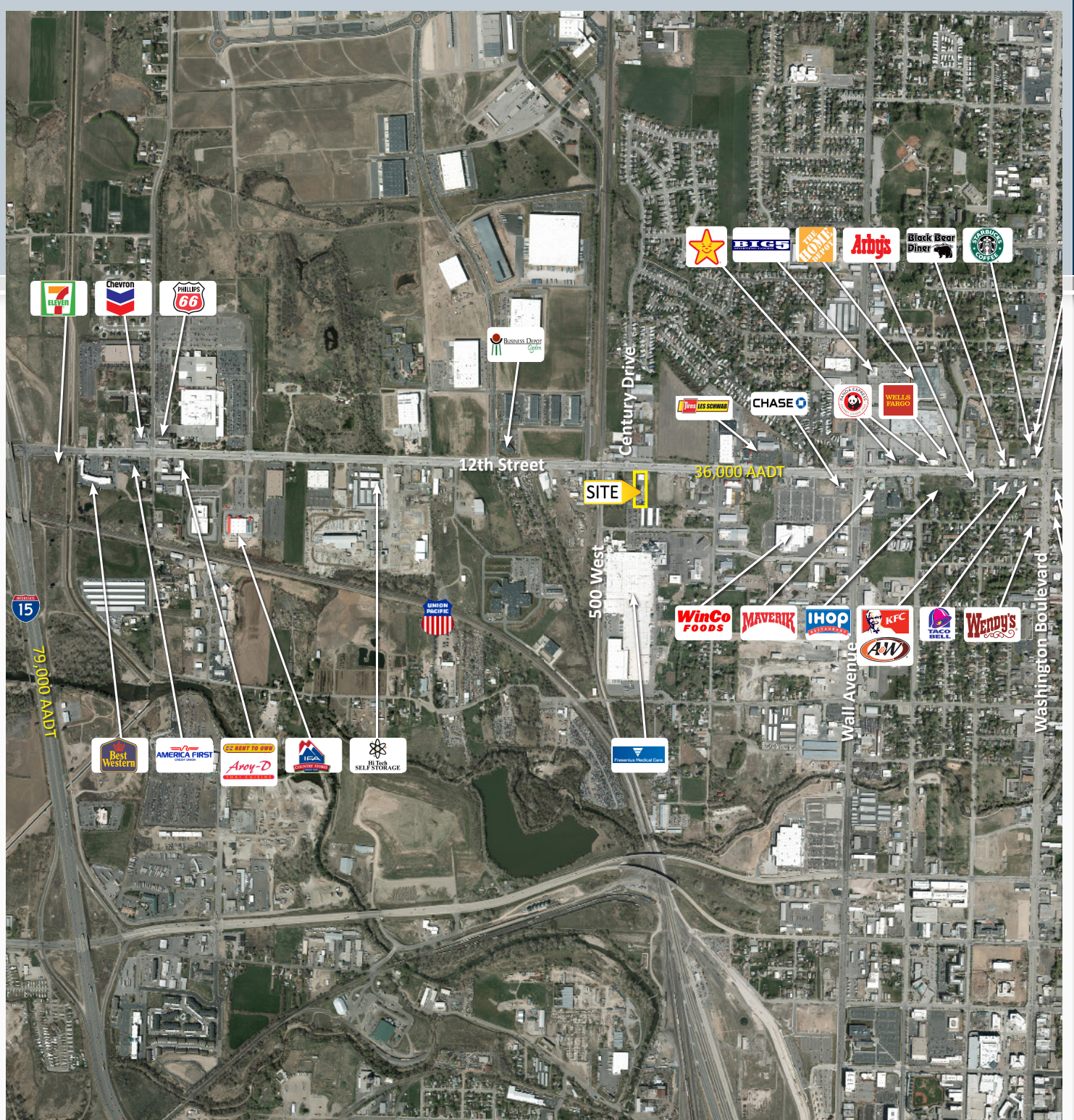
RYAN WICKNICK
RETAIL / INVESTMENT SPECIALIST
801.393.2733 OFFICE
801.309.1640 CELL
ryan@ppc-utah.com



ALI WICKNICK
RETAIL LEASING AGENT
801.393.2733 OFFICE
801.831.7013 CELL
ali@ppc-utah.com



NO WARRANTY OR REPRESENTATION, EXPRESS OR IMPLIED, IS MADE AS TO THE ACCURACY OF THE INFORMATION CONTAINED HEREIN, AND THE SAME IS SUBMITTED SUBJECT TO ERRORS, OMISSIONS, CHANGE OF PRICE, RENTAL OR OTHER CONDITIONS, PRIOR SALE, LEASE OR FINANCING, OR WITHDRAWAL WITHOUT NOTICE, AND OF ANY SPECIAL LISTING CONDITIONS IMPOSED BY OUR PRINCIPALS. NO WARRANTIES OR REPRESENTATIONS ARE MADE AS TO THE CONDITIONS OF THE PROPERTY OR ANY HAZARDS CONTAINED THEREIN OR ANY TO BE IMPLIED.



RYAN WICKNICK
RETAIL / INVESTMENT SPECIALIST
801.393.2733 OFFICE
801.309.1640 CELL
ryan@ppc-utah.com



ALI WICKNICK
RETAIL LEASING AGENT
801.393.2733 OFFICE
801.831.7013 CELL
ali@ppc-utah.com

