

Waukesha Commerce & Industrial Center



PARK HIGHLIGHTS



Flex industrial space available with varying SFs & configurations to suit tenant requirements



High visibility within Waukesha & opportunity for exterior signage (subject to municipal & landlord approval)



New ownership with planned interior & exterior improvements throughout the park



Professionally managed

Contact us to learn more

Conor Alban
414 278 6843 (direct)
630 796 1553 (mobile)
conor.albian@colliers.com

SITE DETAILS

Available Space

Building 1 <i>Availability</i>	19,352 SF <i>+/- 2,339 SF</i>
Building 2 <i>Availability</i>	9,579 SF <i>Fully Leased</i>
Building 3 <i>Availability</i>	19,153 SF <i>Fully Leased</i>
Building 4 <i>Availability</i>	19,209 SF <i>+/- 4,858 SF</i>
Building 5 <i>Availability</i>	19,064 SF <i>+/- 2,512 SF</i>
Building 6 <i>Availability</i>	25,133 SF <i>+/- 1,780 SF</i>
Building 7 <i>Availability</i>	9,599 SF <i>+/- 2,400 SF</i>
Building 8 <i>Availability</i>	9,642 SF <i>Fully Leased</i>
Building 9 <i>Availability</i>	19,232 SF <i>Fully Leased</i>

WAUKESHA COMMERCE & INDUSTRIAL CENTER



Building	1
Address	2111 S West Avenue Waukesha, WI
Building Size	+/- 19,352 SF
Availability	+/- 2,339 SF
Drive-Ins	One (1) Available
Clear Height	+/- 13'
Year Built	2000
Lease Rate	\$9.00/SF NNN
Est. Op Ex	\$3.67 PSF

2	3	
Address	406 Travis Lane Waukesha, WI	404 Travis Lane Waukesha, WI
Building Size	+/- 9,579 SF	+/- 19,153 SF
Availability	None	None
Drive-Ins	-	-
Clear Height	+/- 12'	+/- 13'
Year Built	1996	1995
Lease Rate	\$9.00/SF NNN	\$9.00/SF NNN
Est. Op Ex	\$3.65 PSF	\$3.18 PSF

4	
Address	400 Travis Lane Waukesha, WI
Building Size	+/- 19,209 SF
Availability	+/- 4,858 SF
Drive-Ins	Two (2) Available
Clear Height	+/- 12'
Year Built	2006
Lease Rate	\$9.00/SF NNN
Est. Op Ex	\$3.13 PSF

Building	5	6	7
Address	300 Travis Lane Waukesha, WI	402 Travis Lane Waukesha, WI	304 Travis Lane Waukesha, WI
Building Size	+/- 19,064 SF	+/- 25,133 SF	+/- 9,599 SF
Availability	+/- 2,512 SF	+/- 1,780 SF	+/- 2,400 SF
Drive-Ins	One (1) Available	One (1) Available	One (1) Available
Clear Height	+/- 13'	+/- 13'	+/- 14'
Year Built	1995	1987	1987
Lease Rate	\$9.00/SF NNN	\$9.00/SF NNN	\$9.00/SF NNN
Est. Op Ex	\$3.30 PSF	\$3.69 PSF	\$3.94 PSF

8	9	
Address	2103 S Grand Avenue Waukesha, WI	206 Travis Lane Waukesha, WI
Building Size	+/- 9,602 SF	+/- 19,232 SF
Availability	None	None
Drive-Ins	-	-
Clear Height	+/- 13'	+/- 13'
Year Built	1985	1985
Lease Rate	\$9.00/SF NNN	\$9.00/SF NNN
Est. Op Ex	\$4.10 PSF	\$2.98 PSF

2111 S WEST AVENUE (BUILDING ONE)

Waukesha, WI 53189

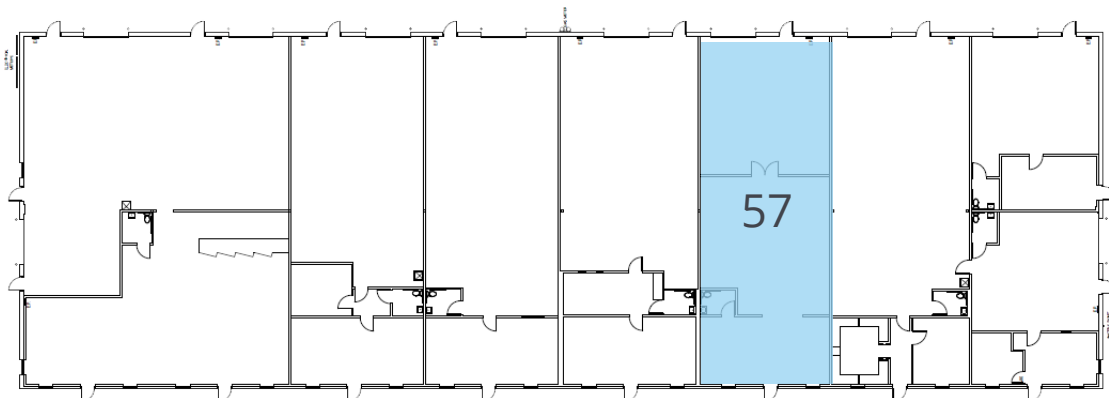
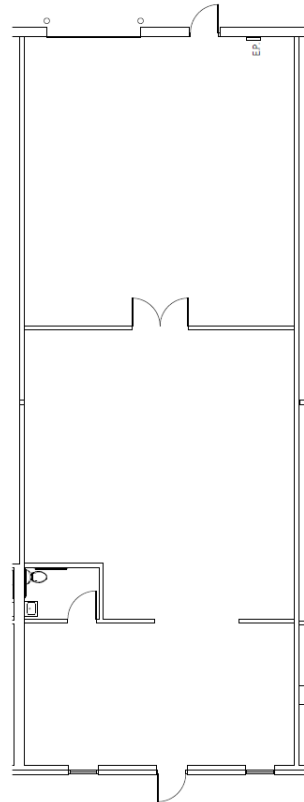
Building Highlights



Building SF	+/- 19,352 SF
Available SF	+/- 2,339 SF
Clear Height	+/- 13'
Power	TBV by tenant
Zoning	M2
Construction	Masonry
Lease Rate	\$9.00 PSF NNN
OpEx	\$3.67 PSF

Unit 57

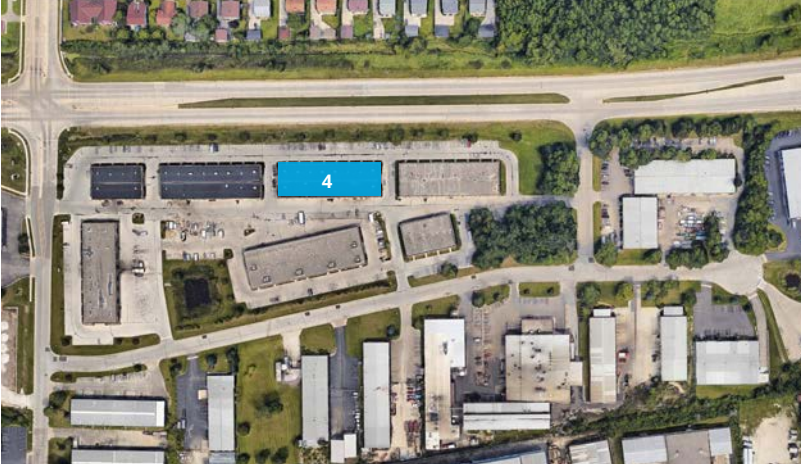
Available SF	+/- 2,339 SF
Warehouse SF	+/- 1,759 SF
Office SF	+/- 580 SF
Loading	1 Drive-In



400 TRAVIS LANE (BUILDING FOUR)

Waukesha, WI 53189

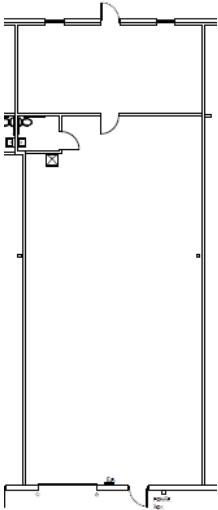
Building Highlights



Building SF	+/- 19,209 SF
Available SF	+/- 4,858 SF
Clear Height	+/- 12'
Power	TBV by Tenant
Zoning	M2
Construction	Masonry
Lease Rate	\$9.00 PSF NNN
OpEx	\$3.13 PSF

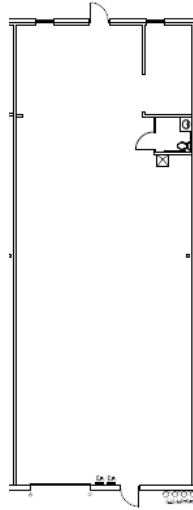
Unit 28

Available SF	+/- 2,445 SF
Warehouse SF	+/- 1,970 SF
Office SF	+/- 475 SF
Loading	1 Drive-In



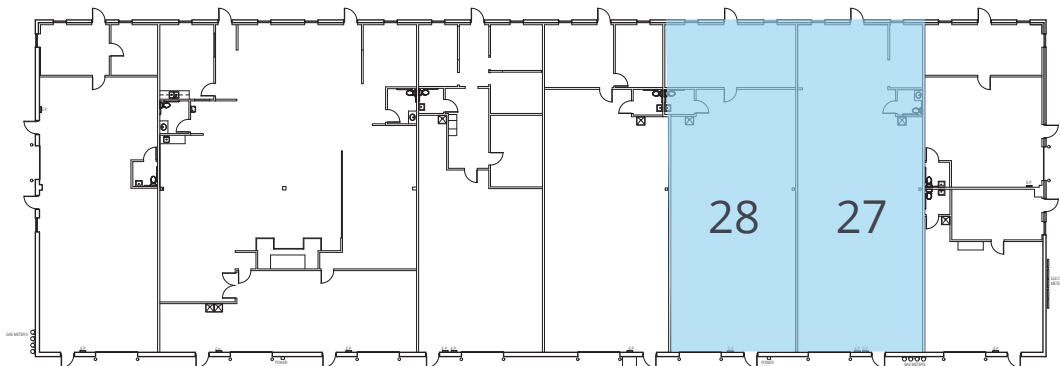
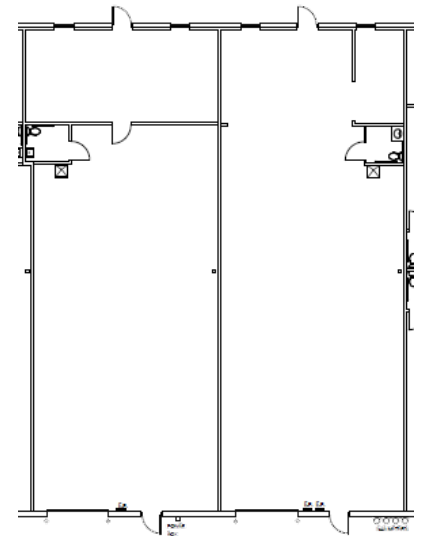
Unit 27

Available SF	+/- 2,413 SF
Warehouse SF	+/- 2,172 SF
Office SF	+/- 200 SF
Loading	1 Drive-In



Combined

Available SF	+/- 4,858 SF
Warehouse SF	+/- 4,183 SF
Office SF	+/- 675 SF
Loading	2 Drive-Ins



300 TRAVIS LANE (BUILDING FIVE)

Waukesha, WI 53189

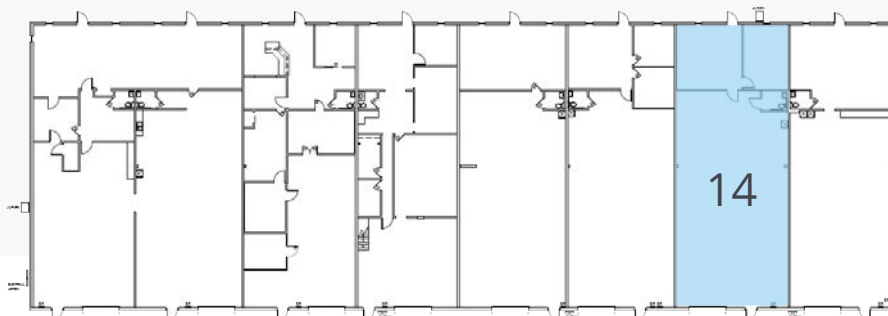
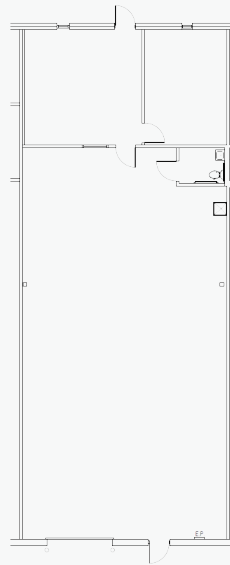
Building Highlights



Building SF	+/- 19,064 SF
Available SF	+/- 2,512 SF
Clear Height	+/- 13'
Power	200amp/280v/3-phase (TBV by tenant)
Zoning	M2
Construction	Masonry
Lease Rate	\$9.00 PSF NNN
OpEx	\$3.30 PSF

Units 14

Available SF	+/- 2,512 SF
Warehouse SF	+/- 2,012 SF
Office SF	+/- 500 SF
Loading	1 Drive-In



402 TRAVIS LANE (BUILDING SIX)

Waukesha, WI 53189

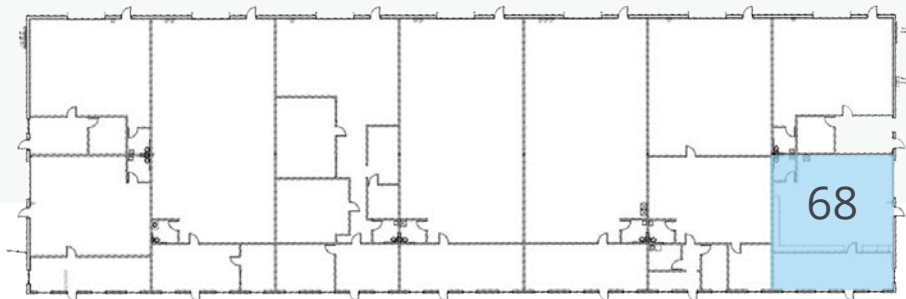
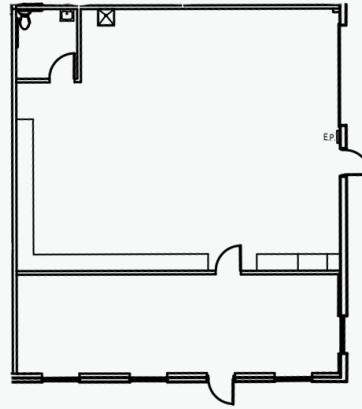
Building Highlights



Building SF	+/- 25,133 SF
Available SF	+/- 1,780 SF
Clear Height	+/- 13'
Power	200amp (TBV by tenant)
Zoning	M2
Construction	Masonry
Lease Rate	\$9.00 PSF NNN
OpEx	\$3.69 PSF

Unit 68

Available SF	+/- 1,780 SF
Warehouse SF	+/- 1,350 SF
Office SF	+/- 430 SF
Loading	1 Drive-In



304 TRAVIS LANE (BUILDING SEVEN)

Waukesha, WI 53189

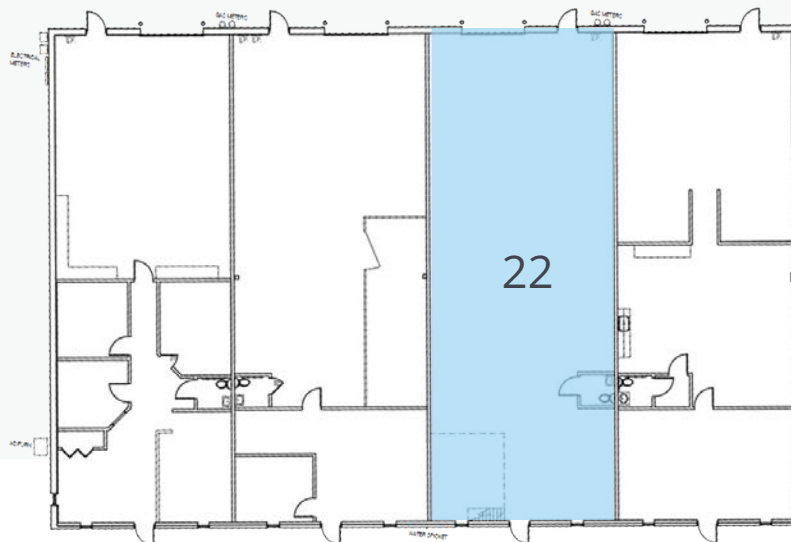
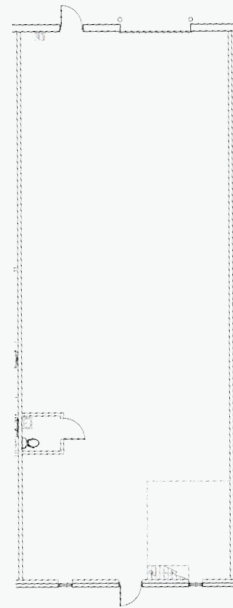
Building Highlights



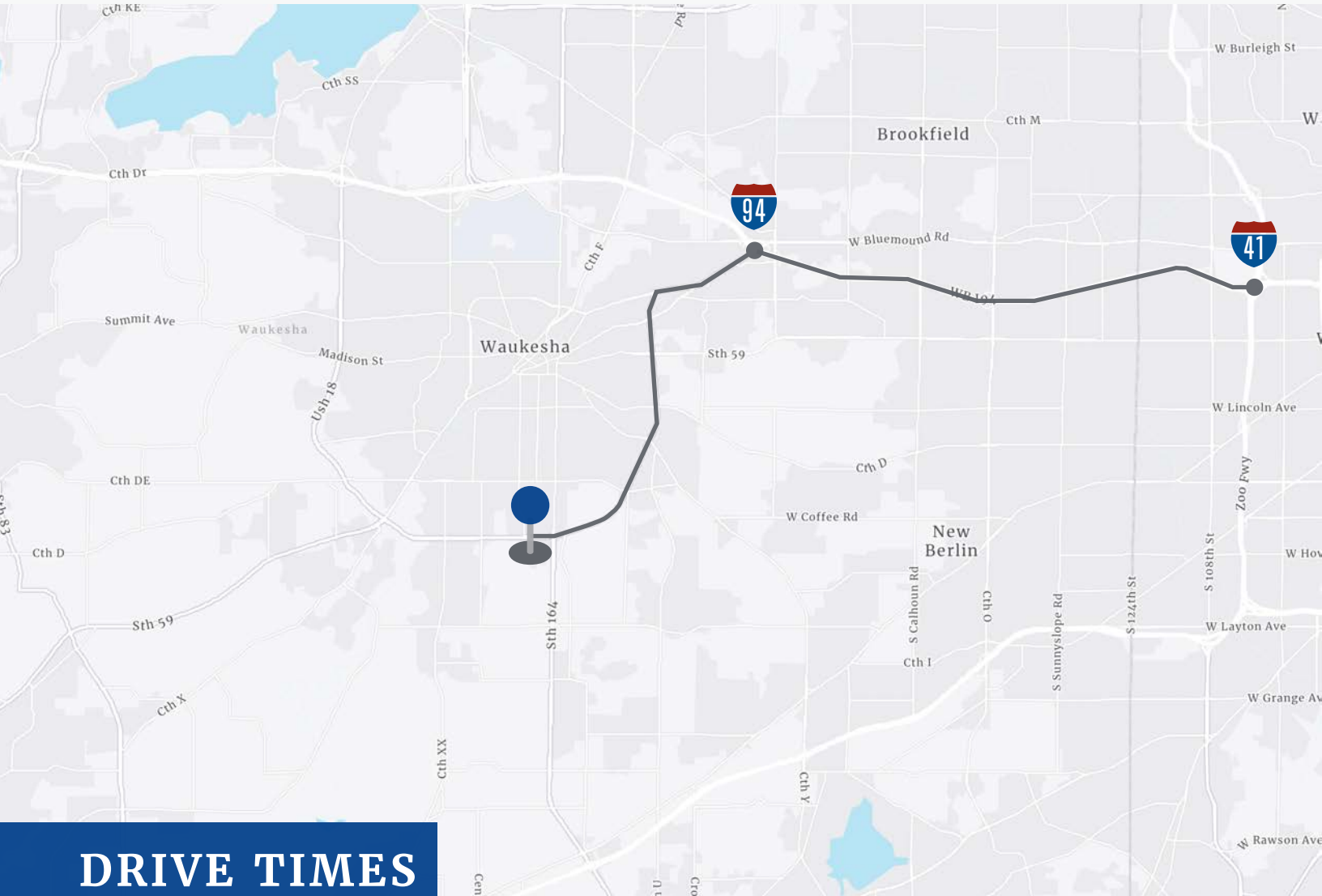
Building SF	+/- 9,599 SF
Available SF	+/- 2,400 SF
Clear Height	+/- 14'
Power	200amp/280v/3-phase (TBV by tenant)
Zoning	M2
Construction	Masonry
Lease Rate	\$9.00 PSF NNN
OpEx	\$3.94 PSF

Unit 22

Available SF	+/- 2,400 SF
Warehouse SF	+/- 2,400 SF
Loading	1 Drive-In



Waukesha Commerce & Industrial Center



DRIVE TIMES

I-94

13 Minutes
6.0 Miles

I-41

30 Minutes
13.5 Miles

Contact us to learn more



Conor Alban

Real Estate Advisor

+1 414 278 6843 (direct)

+1 630 796 1553 (mobile)

conor.albian@colliers.com

Colliers | Wisconsin | 833 E Michigan Street, Suite 500 | Milwaukee, WI 53202 | P: +1 414 276 9500 F: +1 414 276 9501

Colliers

This document/email has been prepared by Colliers International for advertising and general information only. Colliers International makes no guarantees, representations or warranties of any kind, expressed or implied, regarding the information including, but not limited to, warranties of content, accuracy and reliability. Any interested party should undertake their own inquiries as to the accuracy of the information. Colliers International excludes unequivocally all inferred or implied terms, conditions and warranties arising out of this document and excludes all liability for loss and damages arising there from. This publication is the copyrighted property of Colliers International and /or its licensor(s). © 2024. All rights reserved. This communication is not intended to cause or induce breach of an existing listing agreement.

State Of Wisconsin | Disclosure to Non-Residential Customers

Prior to negotiating on your behalf the Brokerage firm, or an agent associated with the firm, must provide you the following disclosure statement:

Broker Disclosure to Customers

You are a customer of the brokerage firm (hereinafter Firm). The Firm is either an agent of another party in the transaction or a subagent of another firm that is the agent of another party in the transaction. The broker or a salesperson acting on behalf of the Firm may provide brokerage services to you. Whenever the Firm is providing brokerage services to you, the Firm and its brokers and salespersons (hereinafter Agents) owe you, the customer, the following duties:

- The duty to provide brokerage services to you fairly and honestly.
- The duty to exercise reasonable skill and care in providing brokerage services to you.
- The duty to provide you with accurate information about market conditions with a reasonable time if you request it, unless disclosure of the information is prohibited by law.
- The duty to disclose to you in writing certain Material Adverse Facts about a property, unless disclosure of the information is prohibited by law.
- The duty to protect your confidentiality. Unless the law requires it, the Firm and its Agents will not disclose your confidential information or the confidential information to other parties.
- The duty to safeguard trust funds and other property held by the Firm or its Agents.
- The duty, when negotiating, to present contract proposals in an objective and unbiased manner and disclose the advantages and disadvantages of the proposals.

Please review this information carefully. An Agent of the Firm can answer your questions about brokerage services, but if you need legal advice, tax advice or a professional home inspection contact an attorney, tax advisor, or home inspector. This disclosure is required by section 452.135 of the Wisconsin statutes and is for information only. It is a plain-language summary of the duties owed to a customer under section 452.133 (1) of the Wisconsin statutes.

Confidentiality Notice to Customers

The Firm and its Agents will keep confidential any information given to the Firm and its Agents in confidence, or any information obtained by the Firm and its Agents that a reasonable person would want to be kept confidential, unless the information must be disclosed by law or you authorize the Firm to disclose particular information. The Firm and its Agents shall continue to keep the information confidential after the Firm is no longer providing brokerage services to you.

The following information is required to be disclosed by law:

1. Material Adverse Facts, as defined in section 452.01 (5g) of the Wisconsin Statutes.
2. Any facts known by the Firm or its Agents that contradict any information included in a written inspection report on the property or real estate that is the subject of the transaction.

To ensure that the Firm and its Agents are aware of what specific information you consider confidential, you may list that information below, or provide that information to the Firm and its Agents by other means. At a later time, you may also provide the Firm and its Agents with other information you consider to be confidential.

Confidential information: _____

Non-Confidential information: (The following information may be disclosed by the Firm and its Agents): _____

(Insert information you authorize to be disclosed, such as financial qualification information.)

Definition of Material Adverse Facts

A "Material Adverse Fact" is defined in Wis. Stat 452.01 (5g) as an Adverse Fact that a party indicates is of such significance, or that is generally recognized by a competent licensee as being of such significance to a reasonable party, that it affects or would affect the party's decision to enter into a contract or agreement concerning a transaction or affects or would affect the party's decision about the terms of such a contract or agreement.

An "Adverse" fact is defined in Wis. Stat. 452.01 (1e) as a condition or occurrence that a competent licensee generally recognizes will significantly and adversely affect the value of the property, significantly reduce the structural integrity of improvements to real estate, or present a significant health risk to occupants of the property; or information that indicates that a party to a transaction is not able to or does not intend to meet his or her obligations under a contract or agreement made concerning the transaction.

Sex Offender Registry

Notice: You may obtain information about the sex offender registry and persons registered with the registry by contacting the Wisconsin Department of Corrections on the Internet at <http://offender.doc.state.wi.us/public/>

No representation is made as to the legal validity of any provision or the adequacy of any provision in any specific transaction.

Copyright 2016 by Wisconsin REALTORS Association.

