

For Lease
1,800 SF Flex Units

Carolina Business Center

2818-2905 Queen City Dr | Charlotte, NC



This Park Offers:

- Convenient Location Near Uptown and Airport
- Visibility from I-85
- Over 20 Nearby Restaurants
- 5 Minute Drive to Uptown Charlotte
- Over 20 Hotels within 1 Mile
- Immediate Access to and from I-85 & Billy Graham Pkwy
- Clean and Well Maintained Business Environment

125 Trade Court, Suite F PMB-12, Mooresville, North Carolina 28117 | 704-709-9708 | Clifford@CPGIndustrial.com

www.CPGINDUSTRIAL.com

For Lease
1,800 SF Flex Units

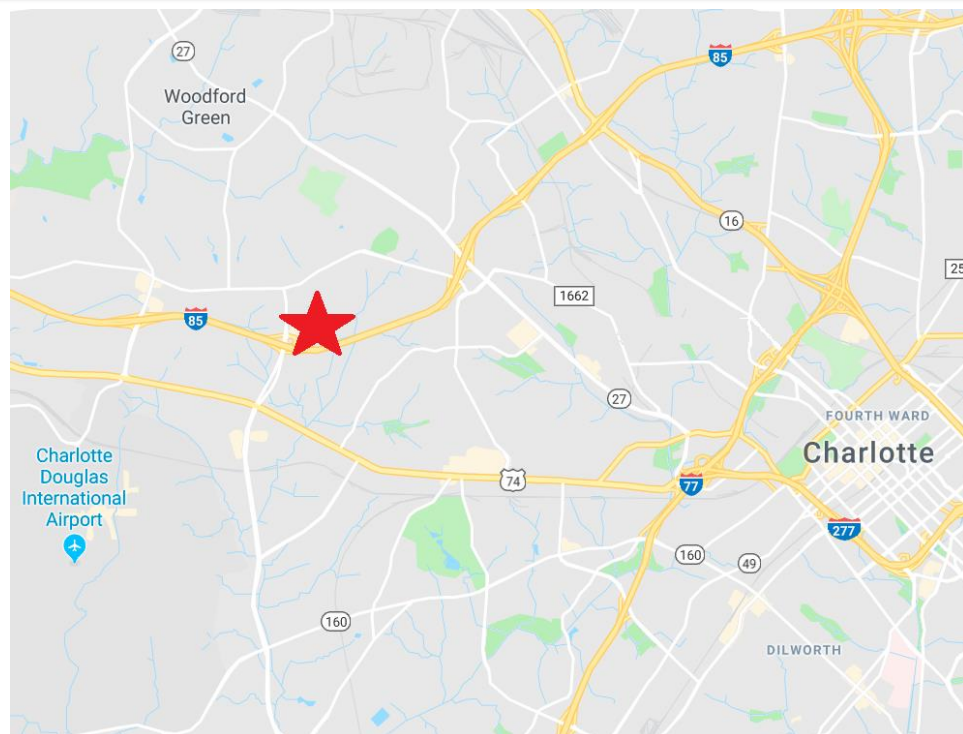
Carolina Business Center

2818-2905 Queen City Dr | Charlotte, NC



Professional Business Park Located off I-85 and Billy Graham Pkwy

- Ample Parking
- Visibility from I-85 and Queen City Drive
- Clean, Well Maintained Business Environment
- Rear Grade-Level Doors
- Common Area Dock-High Ramp
- 14' Minimum Warehouse Clear Height
- Warehouse Space Heaters
- 40% to 100% Office Build-Outs
- New Tenant Upfits Available
- 3.3/1,000 Parking Ratio



125 Trade Court, Suite F PMB-12, Mooresville, North Carolina 28117 | 704-709-9708 | Clifford@CPGindustrial.com

www.CPGINDUSTRIAL.com

Current Availabilities:

Carolina Business Center

2818-2905 Queen City Dr | Charlotte, NC



Address / Suite

SF

Rent \$PSF

Monthly Total

2818 Queen City Drive, Suite A

1,848

\$12.00 MG

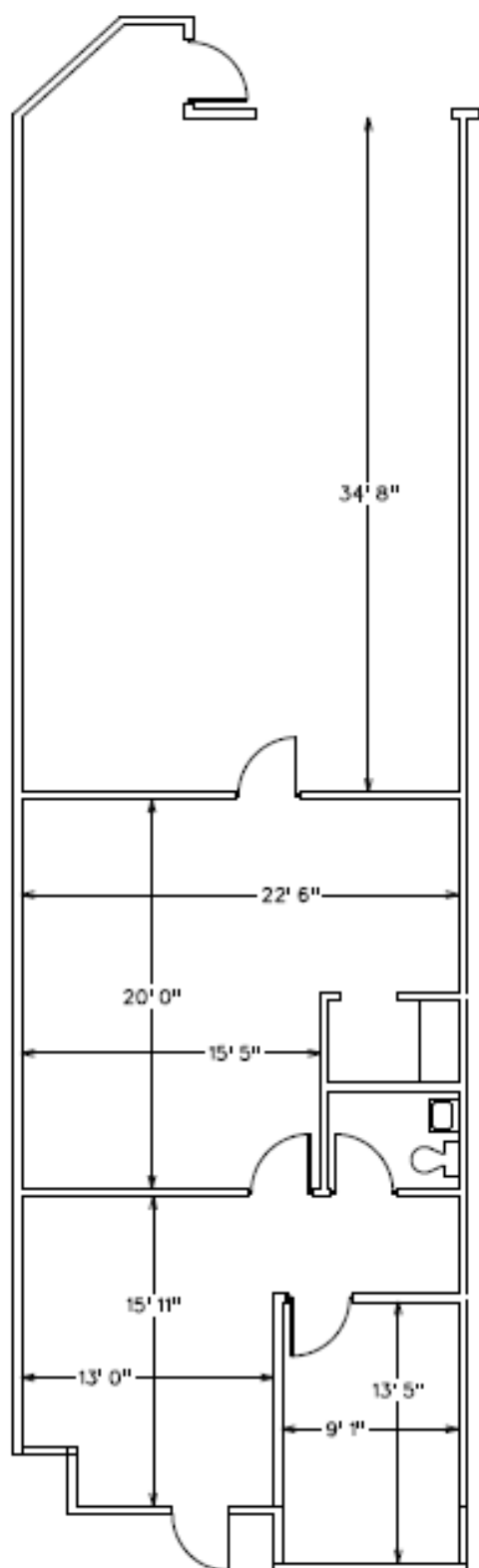
\$1,848.00

2848 Queen City Drive, Suite AB

1,847

\$12.00 MG

\$1,847.00



CAROLINA CENTER
BUSINESS PARK

2818-A

1,848 TOTAL SF
927 SF OFFICE
921 SF WAREHOUSE

