

TOMBALL COMMERCE CENTER

0 HUFSMITH-KOHRVILLE ROAD, TOMBALL, TEXAS 77375



NOT ACTUAL BUILDING SHOWN

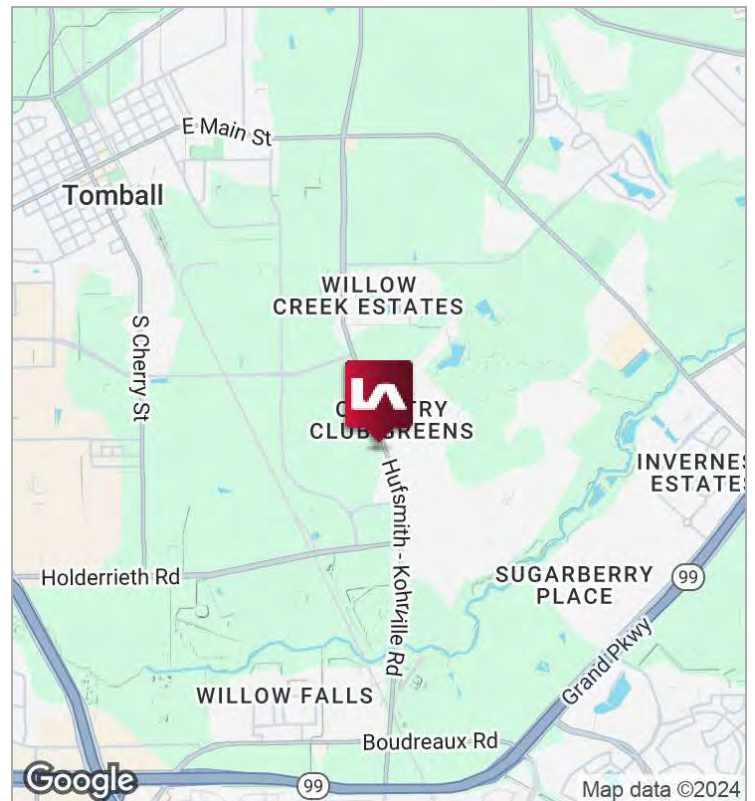
PROPERTY OVERVIEW

- Total Buildings SF:** ±85,750 SF
- Building 1 (SOLD)** ±10,500 SF on ±0.78 AC
- Building 2 (SOLD)** ±10,500 SF on ±0.92 AC
- Building 3 (UNDER CONTRACT)** ±11,255 SF on ±0.89 AC
- Building 4** ±13,125 SF on ±.98 AC
- Building 5** ±20,335 SF on ±1.13 AC
- Building 6** ±25,038 SF on ±1.54 AC

- Eave Height:** 20'
- Loading:** Grade-level
- Power:** 3-phase / 480 volt
- Construction:** Metal
- Total Land:** ±6.93 AC
- Location:** Just a few minutes from Hwy. 249 and The Grand Parkway

ECONOMIC DATA

- Lease Rate:** Call for information
- Sale Price:** Call for information



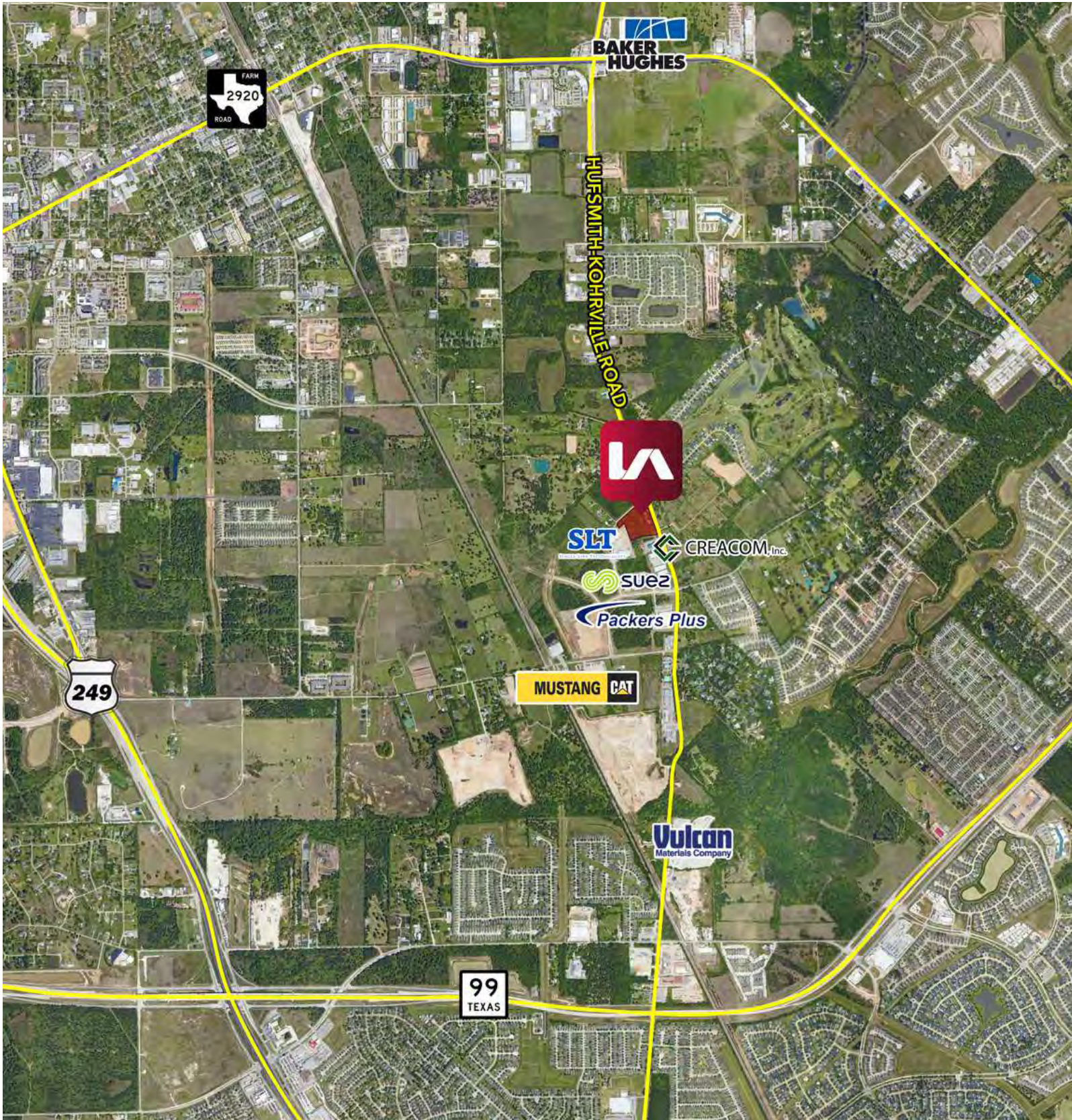
Mike Spears, SIOR, CCIM | *Managing Principal*
 mspears@lee-associates.com
 D 713.744.7404

Patrick Wolford, SIOR, CCIM | *Principal*
 pwolford@lee-associates.com
 D 713.744.7436

All information furnished regarding property for sale, rental or financing is from sources deemed reliable, but no warranty or representation is made to the accuracy thereof and same is submitted to errors, omissions, change of price, rental or other conditions prior to sale, lease or financing or withdrawal without notice. No liability of any kind is to be imposed on the broker herein.

TOMBALL COMMERCE CENTER

0 HUFSMITH-KOHRVILLE ROAD, TOMBALL, TEXAS 77375



Mike Spears, SIOR, CCIM | *Managing Principal*
mspears@lee-associates.com
D 713.744.7404

Patrick Wolford, SIOR, CCIM | *Principal*
pwolford@lee-associates.com
D 713.744.7436

All information furnished regarding property for sale, rental or financing is from sources deemed reliable, but no warranty or representation is made to the accuracy thereof and same is submitted to errors, omissions, change of price, rental or other conditions prior to sale, lease or financing or withdrawal without notice. No liability of any kind is to be imposed on the broker herein.

TOMBALL COMMERCE CENTER

0 HUFSMITH-KOHRVILLE ROAD, TOMBALL, TEXAS 77375



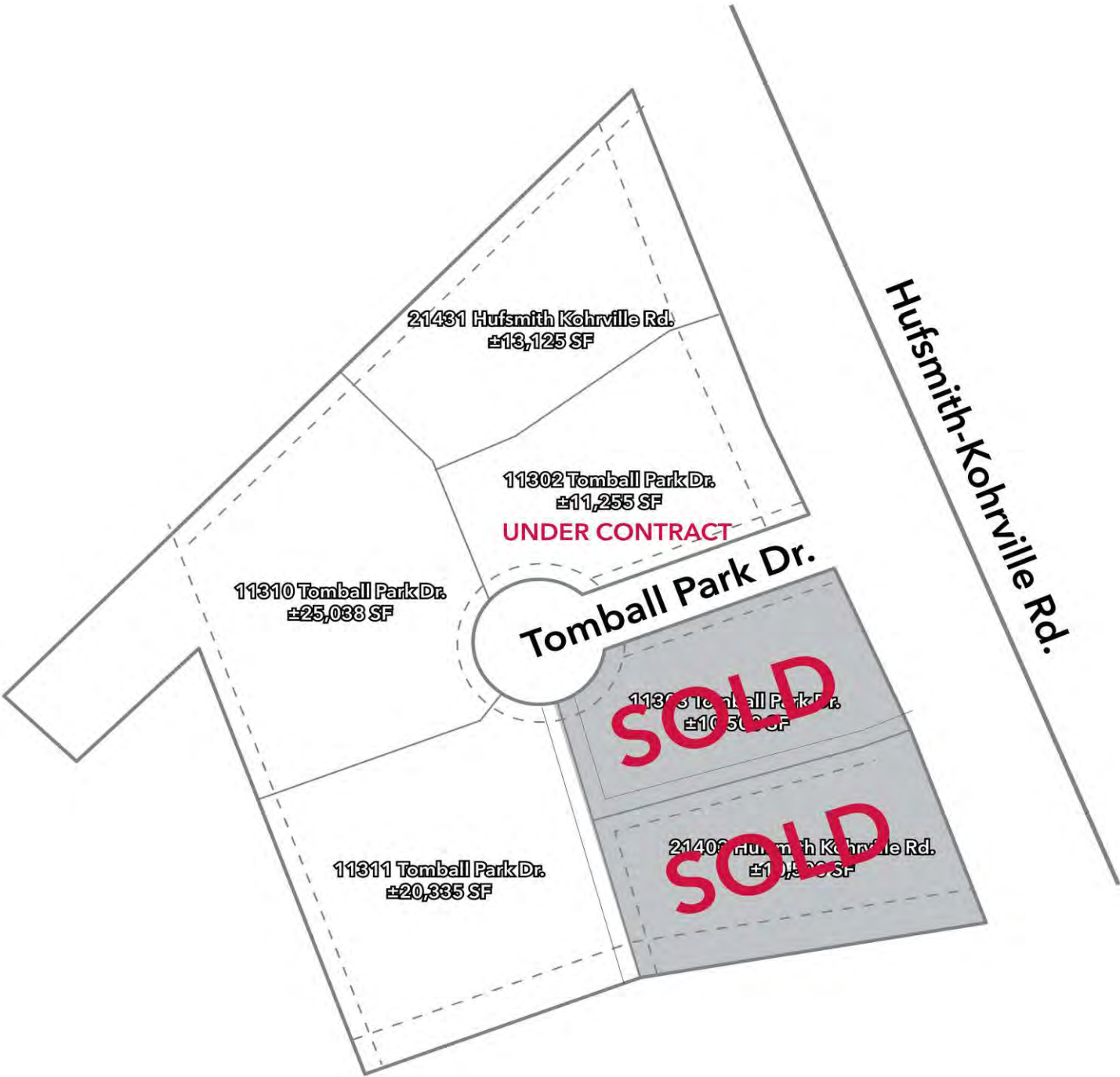
Mike Spears, SIOR, CCIM | *Managing Principal*
mspears@lee-associates.com
D 713.744.7404

Patrick Wolford, SIOR, CCIM | *Principal*
pwolford@lee-associates.com
D 713.744.7436

All information furnished regarding property for sale, rental or financing is from sources deemed reliable, but no warranty or representation is made to the accuracy thereof and same is submitted to errors, omissions, change of price, rental or other conditions prior to sale, lease or financing or withdrawal without notice. No liability of any kind is to be imposed on the broker herein.

TOMBALL COMMERCE CENTER

0 HUFSMITH-KOHRVILLE ROAD, TOMBALL, TEXAS 77375



Mike Spears, SIOR, CCIM | *Managing Principal*
 mspears@lee-associates.com
 D 713.744.7404

Patrick Wolford, SIOR, CCIM | *Principal*
 pwolford@lee-associates.com
 D 713.744.7436

All information furnished regarding property for sale, rental or financing is from sources deemed reliable, but no warranty or representation is made to the accuracy thereof and same is submitted to errors, omissions, change of price, rental or other conditions prior to sale, lease or financing or withdrawal without notice. No liability of any kind is to be imposed on the broker herein.

