



LEASE

Industrial Space

760 HEARTLAND DR

Sugar Grove, IL 60554

PRESENTED BY:

BRIAN LINDGREN

O: 630.938.4950

brian.lindgren@svn.com

FOR LEASE: 760 HEARTLAND DR UNIT 4, SUGAR GROVE, IL 60554



OFFERING SUMMARY

LEASE RATE:	\$2,400.00 per month (MG)
BUILDING SIZE:	20,000 SF
AVAILABLE SF:	2,400 SF
CLEAR HEIGHT:	14'
DRIVE-IN DOORS:	(1) 12'x14'
LOADING DOCKS:	(1) common

PROPERTY OVERVIEW

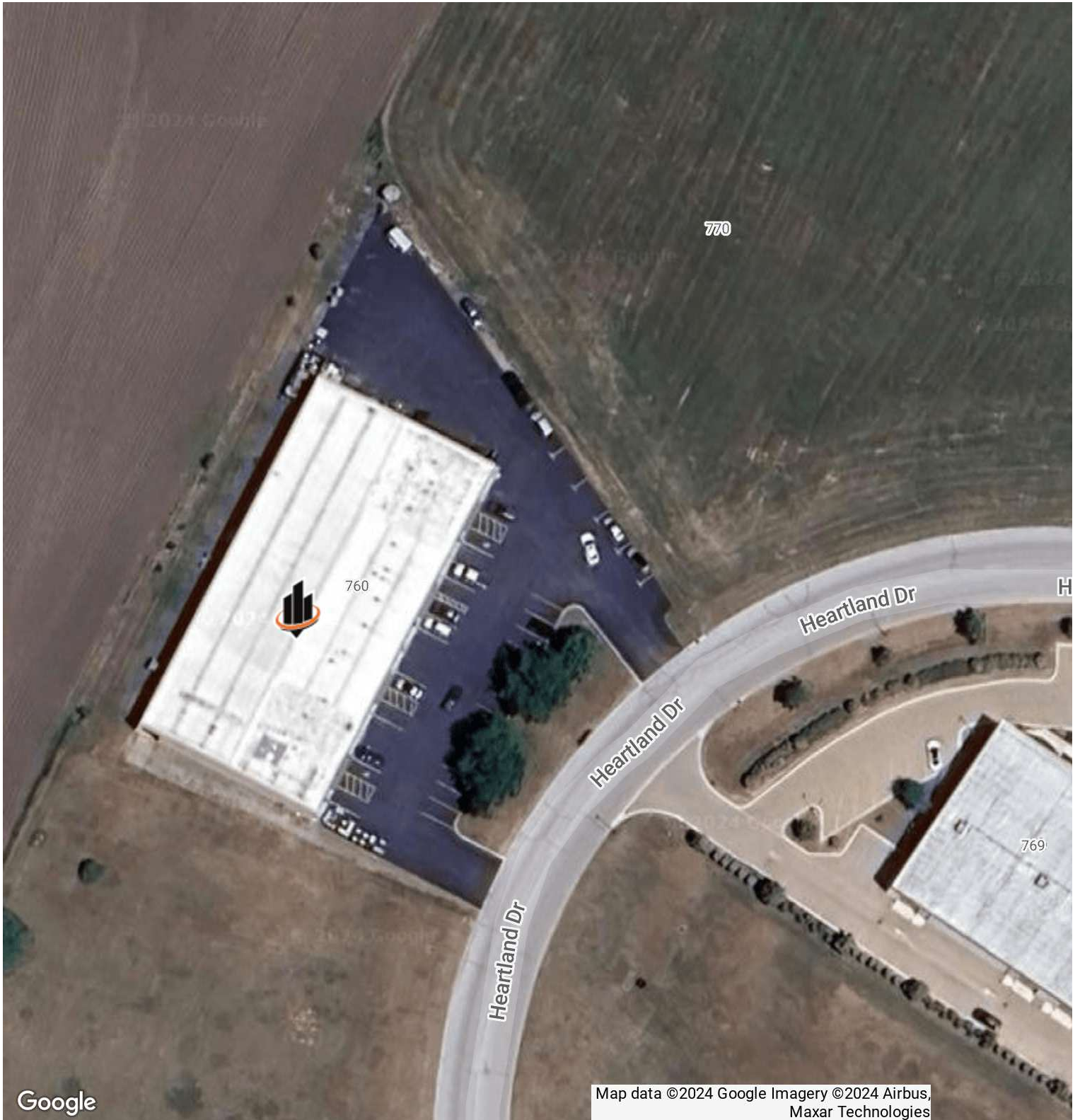
FOR LEASE: Industrial space with private drive-in door and access to common dock. Small office. Ample parking. Easy access to I88 via Rt 47 full interchange.

PROPERTY HIGHLIGHTS

- Drive-in door and loading dock
- Easy access to I88 via Rt 47
- Available November 1st 2024

BRIAN LINDGREN
O: 630.938.4950
brian.lindgren@svn.com

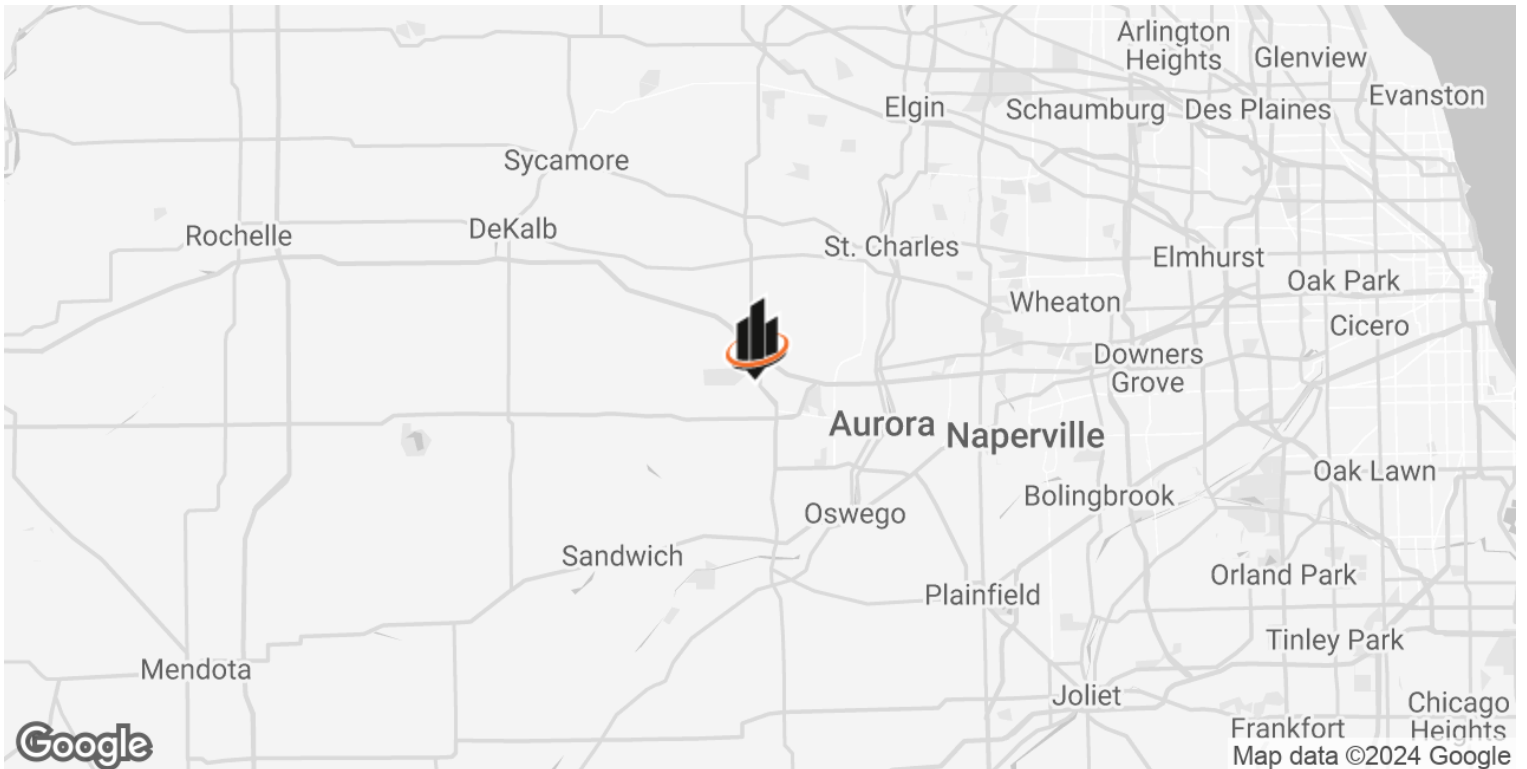
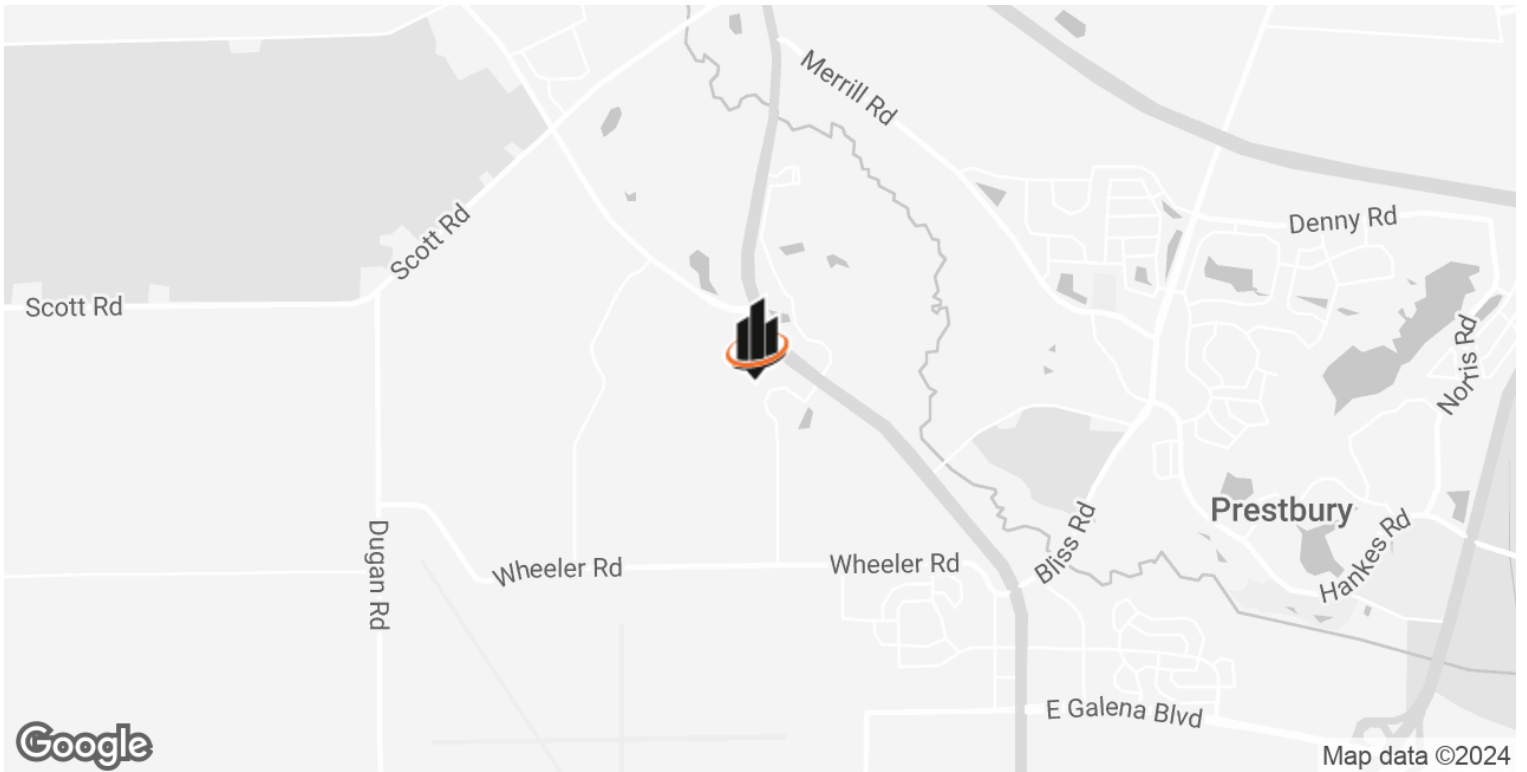
AERIAL



BRIAN LINDGREN
O: 630.938.4950
brian.lindgren@svn.com

760 HEARTLAND DR | Sugar Grove, IL 60554

LOCATION MAPS

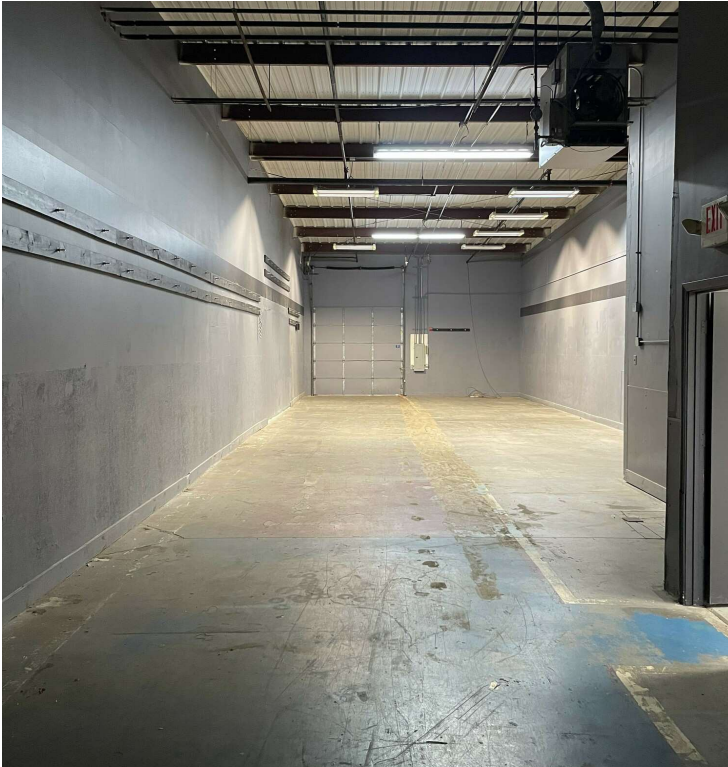
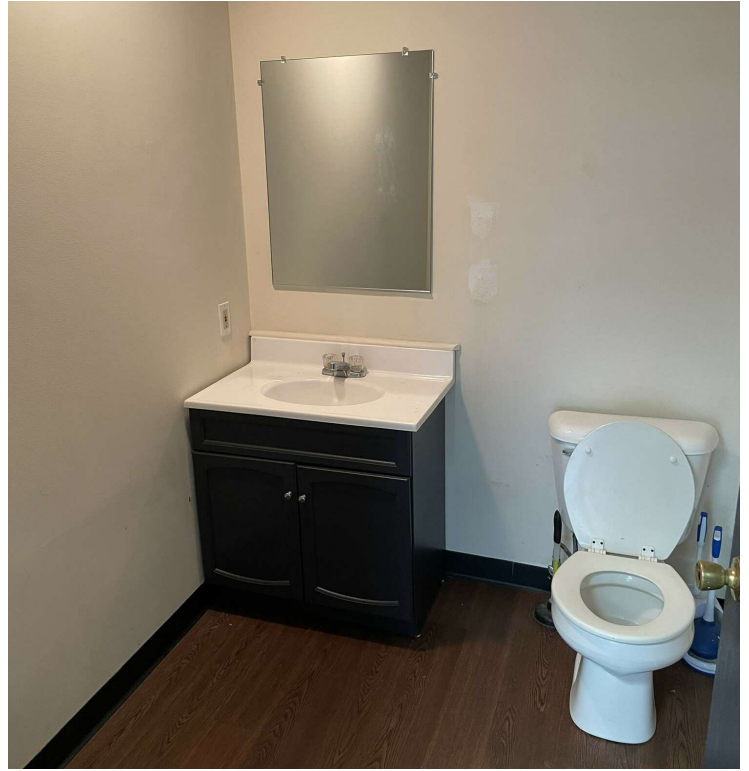


BRIAN LINDGREN

O: 630.938.4950

brian.lindgren@svn.com

ADDITIONAL PHOTOS - UNIT 4



BRIAN LINDGREN
O: 630.938.4950
brian.lindgren@svn.com

760 HEARTLAND DR | Sugar Grove, IL 60554

SVN | LANDMARK COMMERCIAL REAL ESTATE 5