



Lapinski - Hewitt Ave Multi-Family Project - Opt.B - SE View



www.dykeman.net
425.259.3161 (T)

1716 West Marine View Drive
2nd Floor / Everett, WA 98201

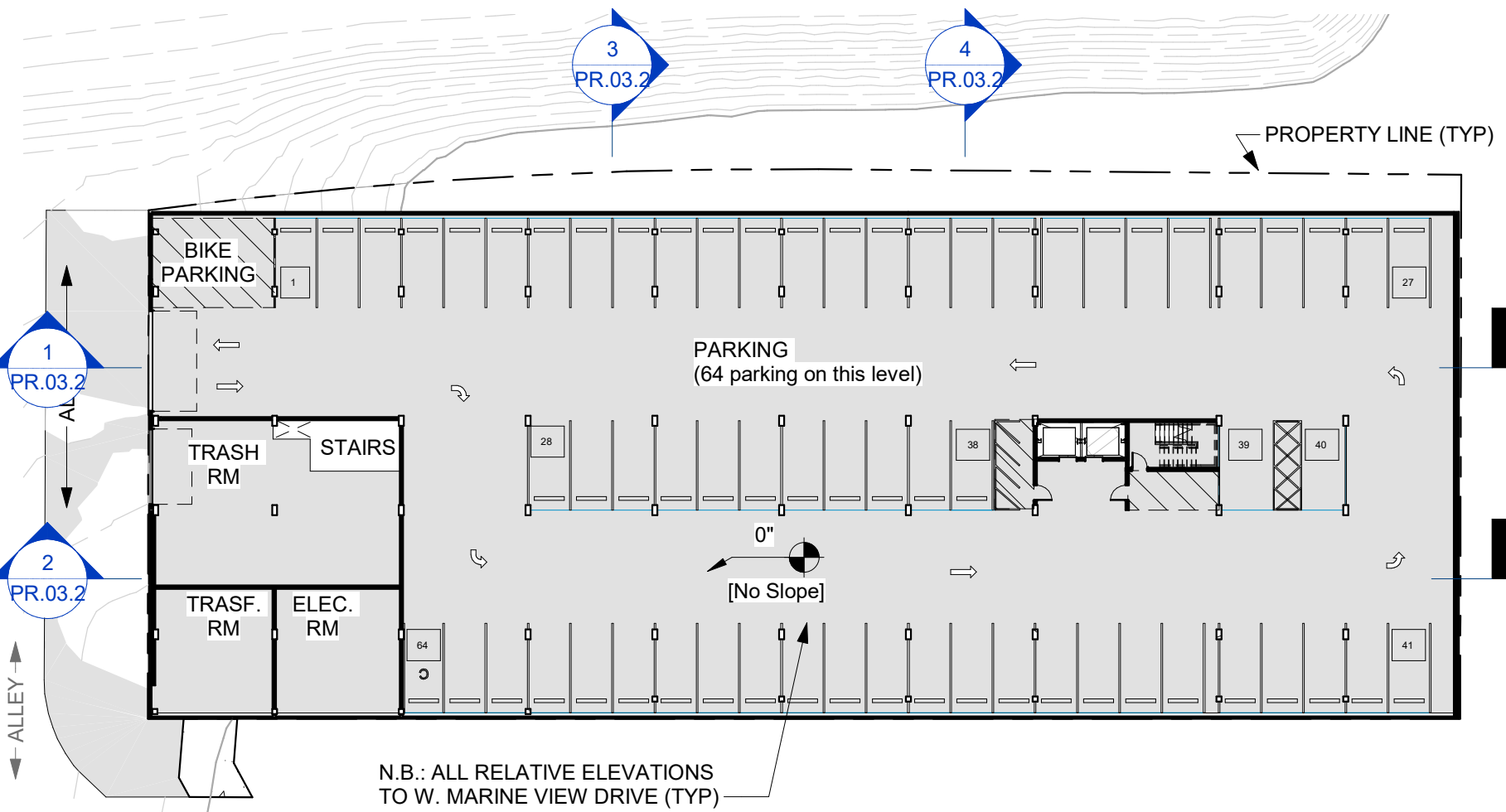


Lapinski - Hewitt Ave Multi-Family Project - Opt.B - SW View

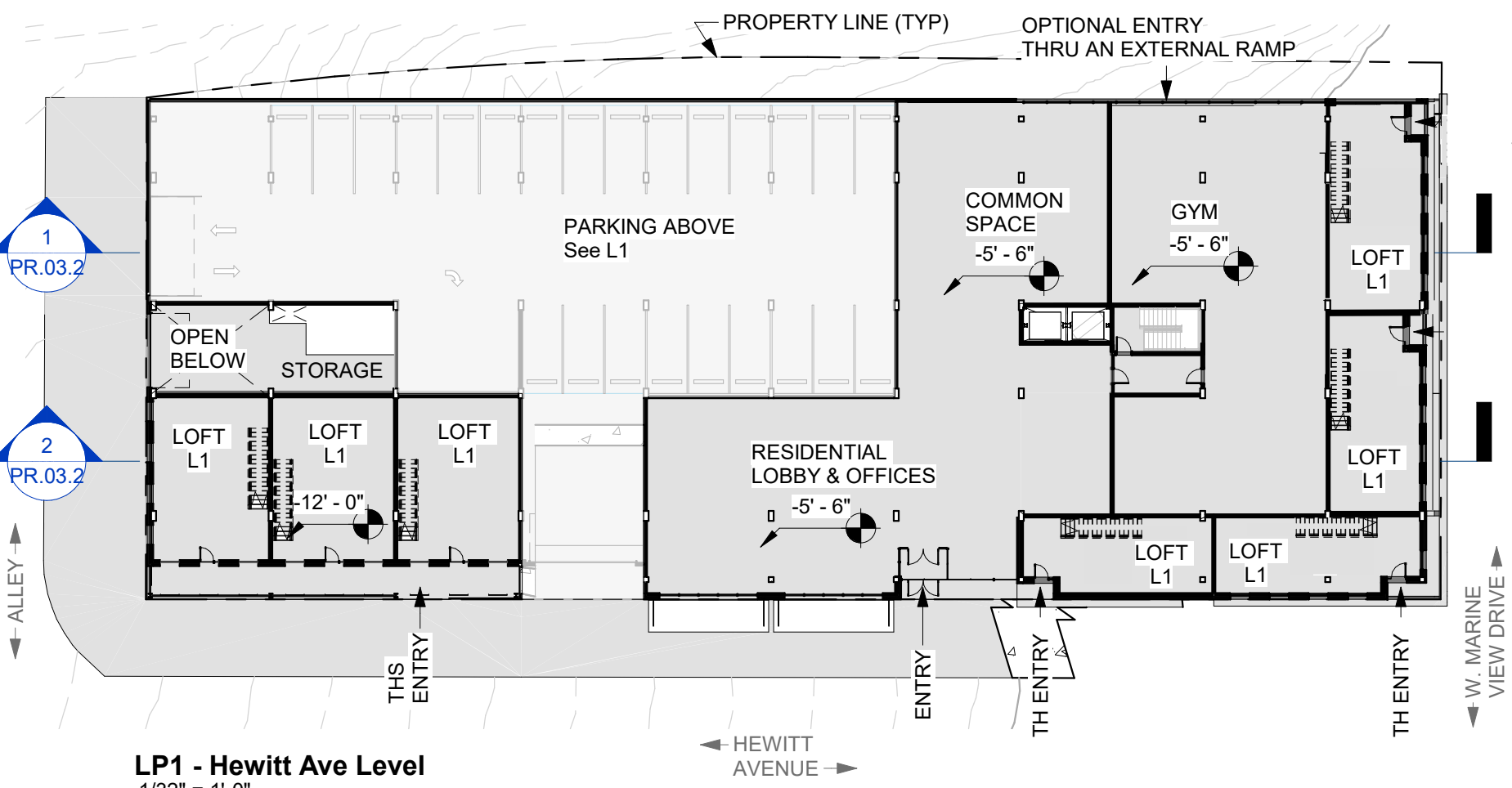


www.dykeman.net
425.259.3161 (T)

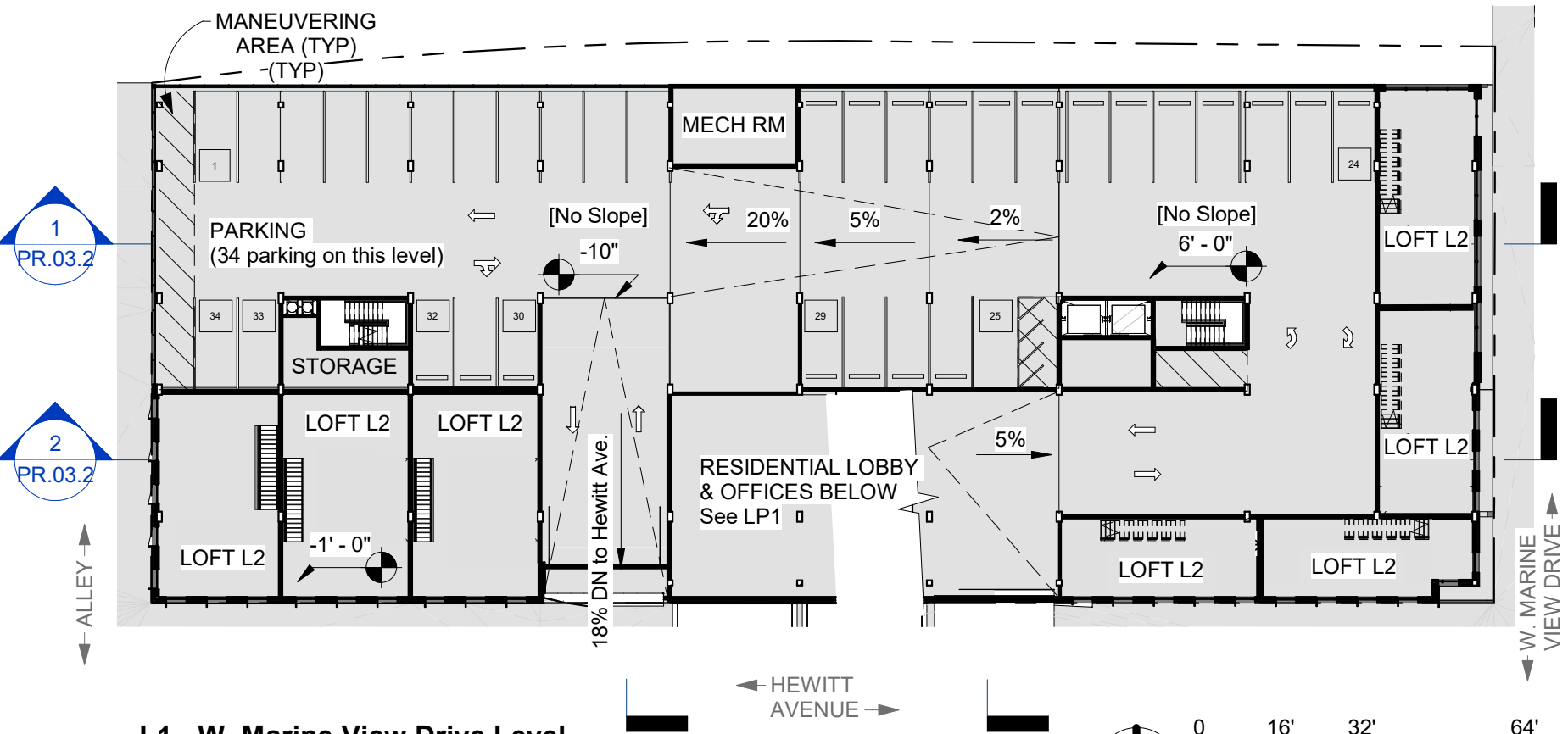
1716 West Marine View Drive
2nd Floor / Everett, WA 98201



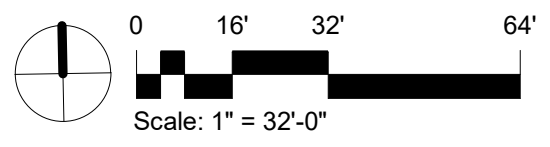
LP2 - Alley Level, Lower Parking
1/32" = 1'-0"



LP1 - Hewitt Ave Level
1/32" = 1'-0"



L1 - W. Marine View Drive Level
1/32" = 1'-0"



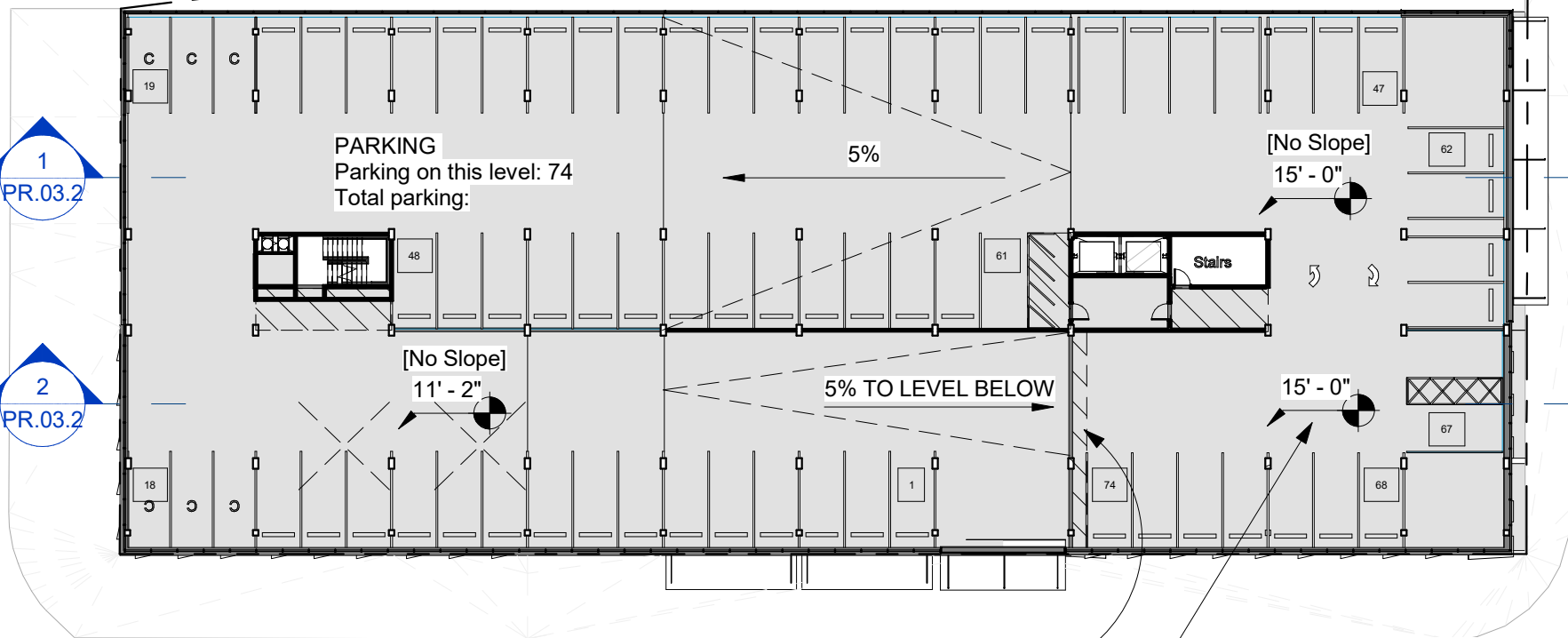
3
PR.03.2

4
PR.03.2

PROPERTY LINE (TYP)

1
PR.03.2

2
PR.03.2



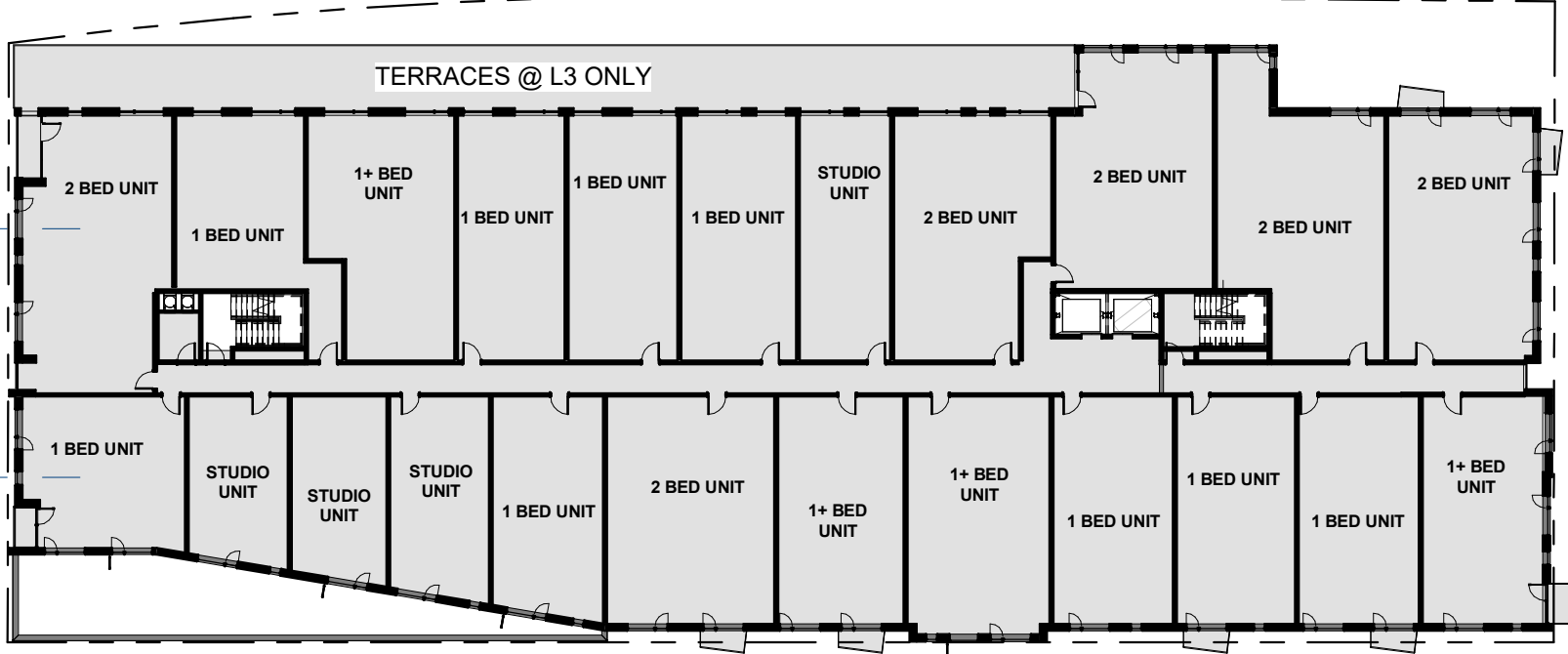
L2 - Upper Parking
1/32" = 1'-0"

MANEUVERING AREA (TYP)

N.B.: ALL RELATIVE ELEVATIONS TO W. MARINE VIEW DRIVE (TYP)

1
PR.03.2

2
PR.03.2



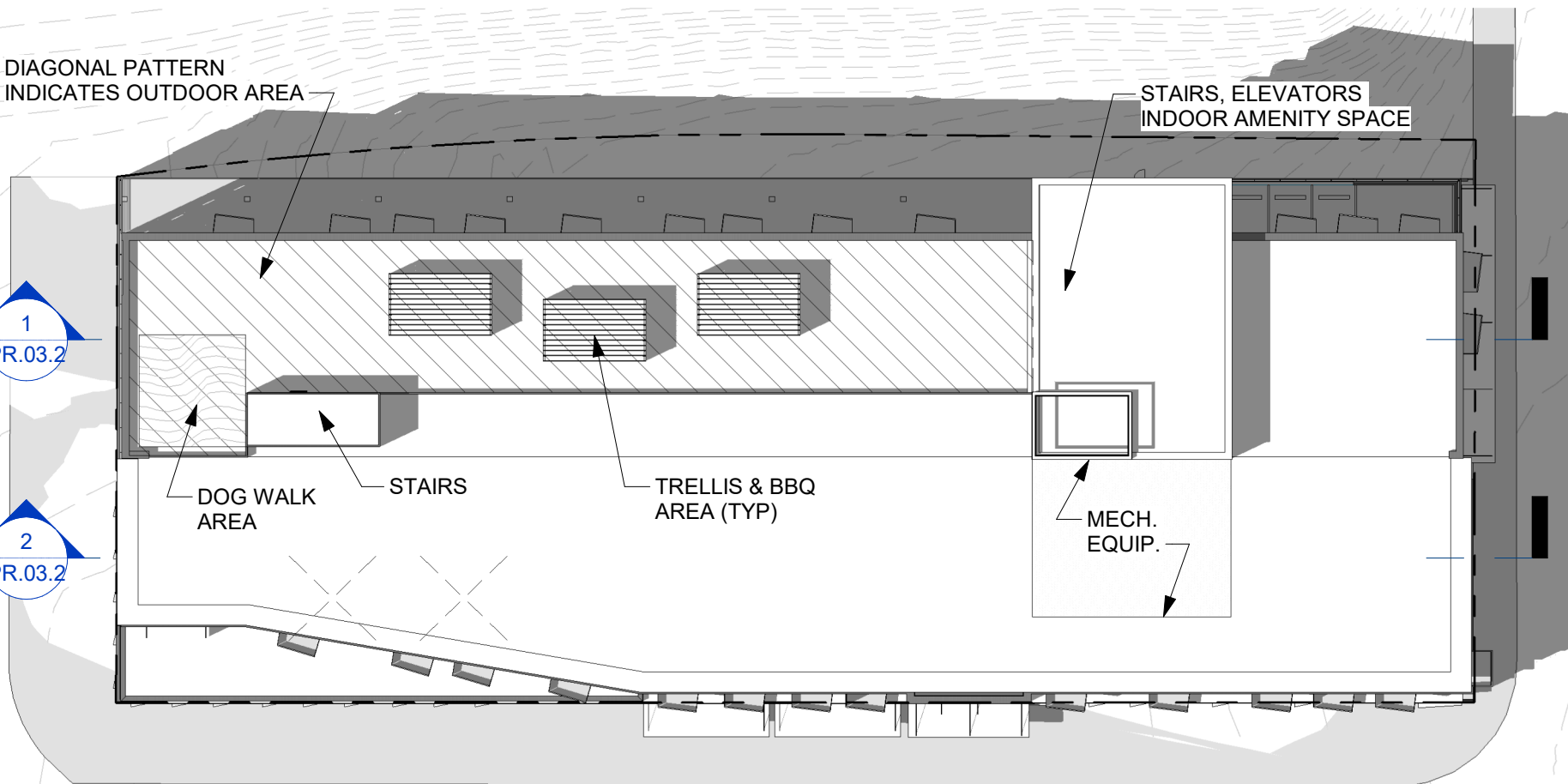
From L3 to L6 - Typ. Residential Levels, @ L7 Penthouses
1/32" = 1'-0"

DIAGONAL PATTERN INDICATES OUTDOOR AREA

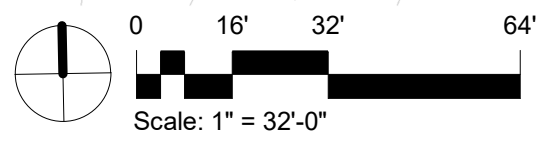
STAIRS, ELEVATORS INDOOR AMENITY SPACE

1
PR.03.2

2
PR.03.2

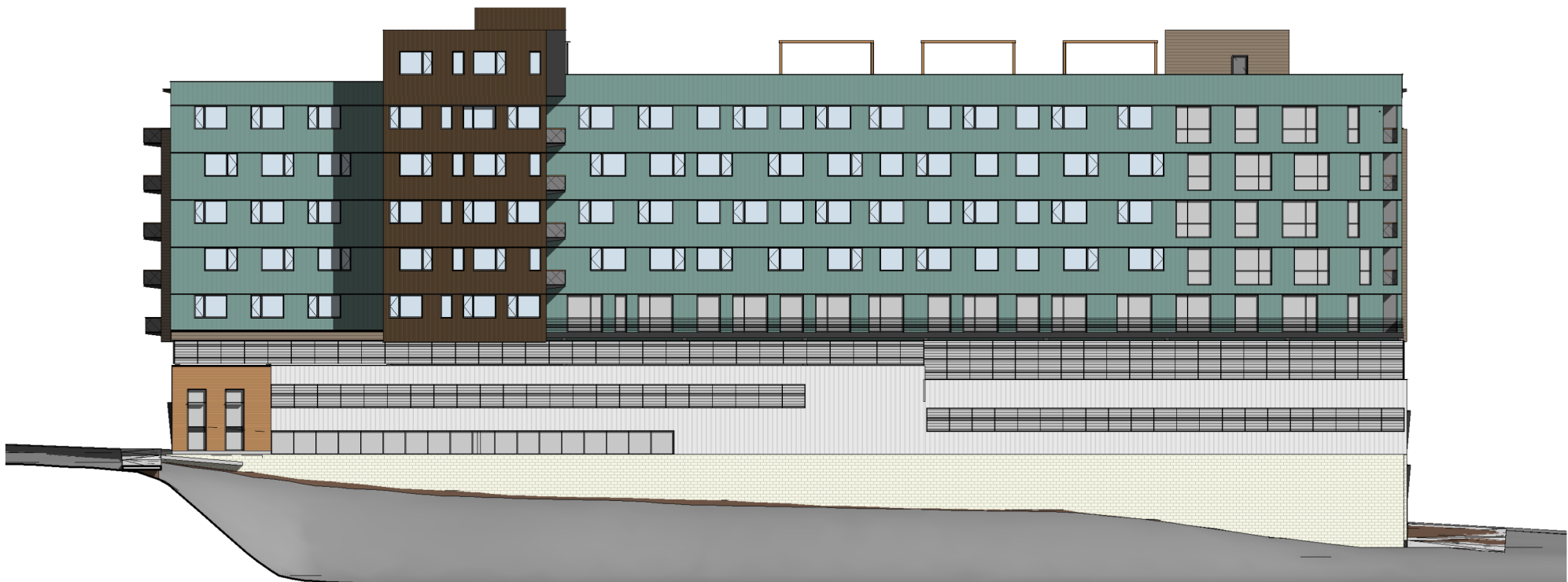


Roof
1/32" = 1'-0"





East Elevation
1/32" = 1'-0"



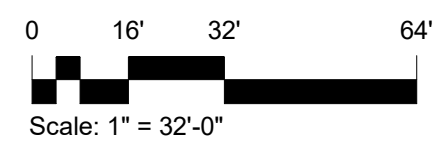
North Elevation
1/32" = 1'-0"

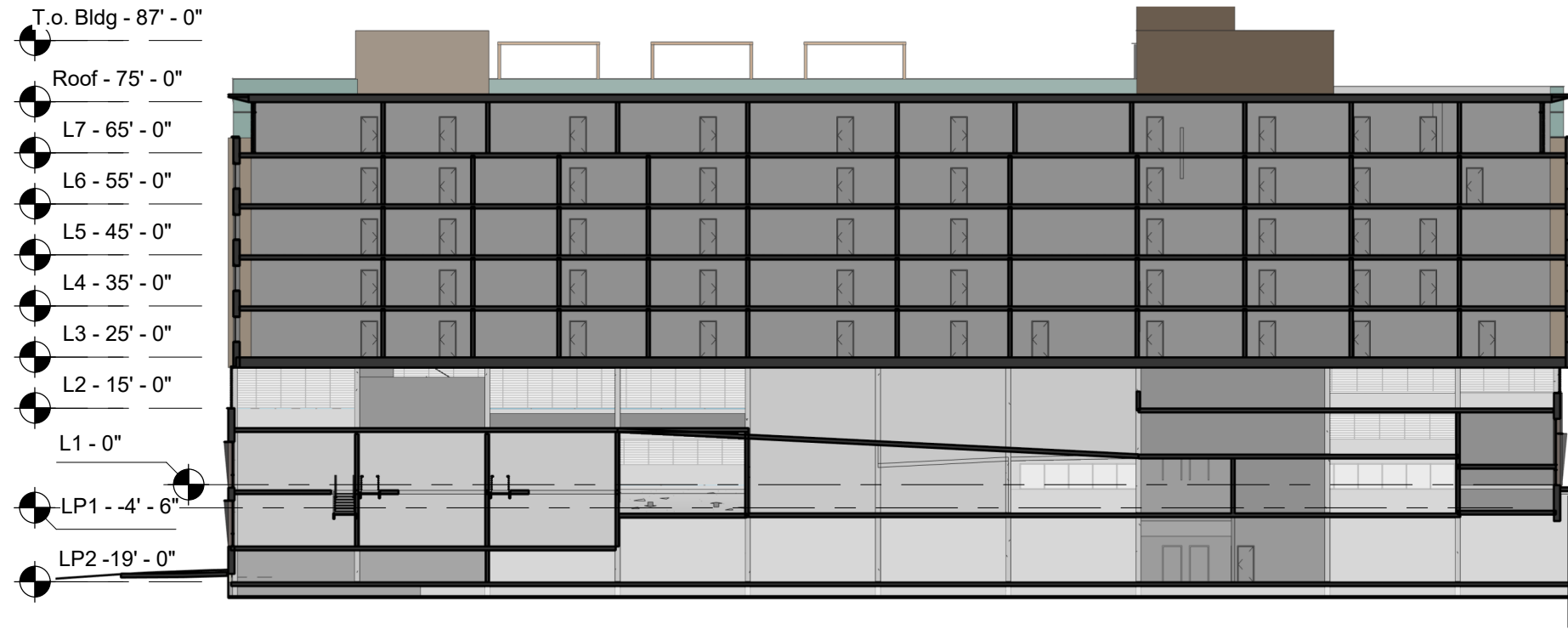


West Elevation
1/32" = 1'-0"

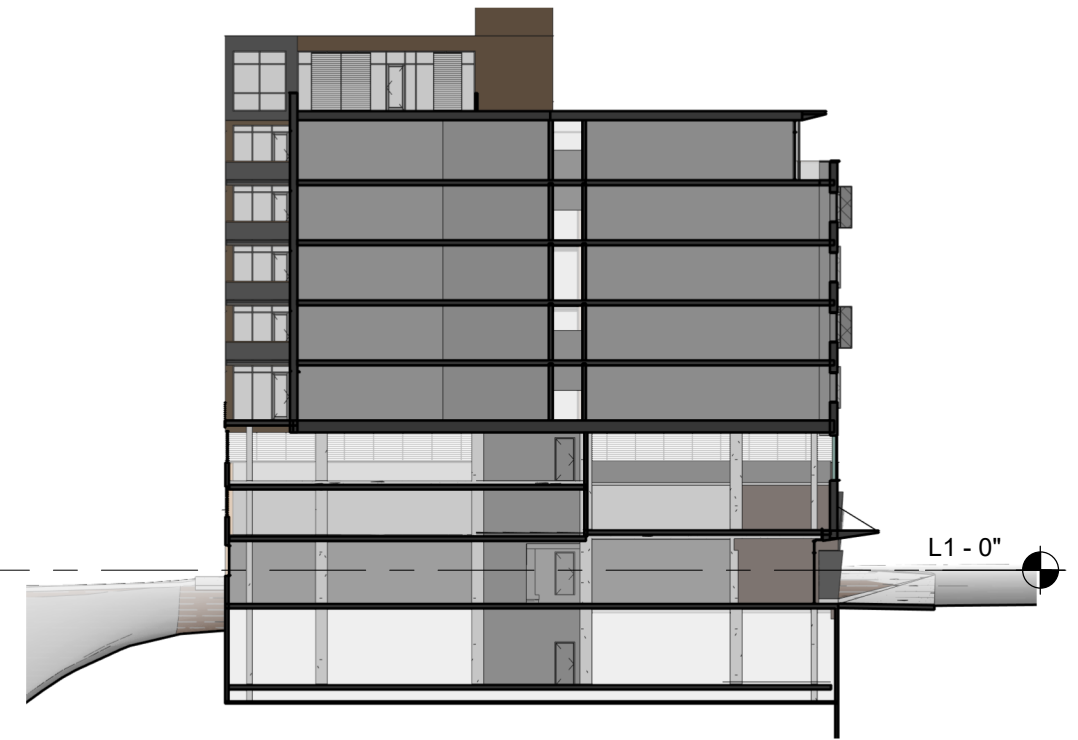


South Elevation
1/32" = 1'-0"

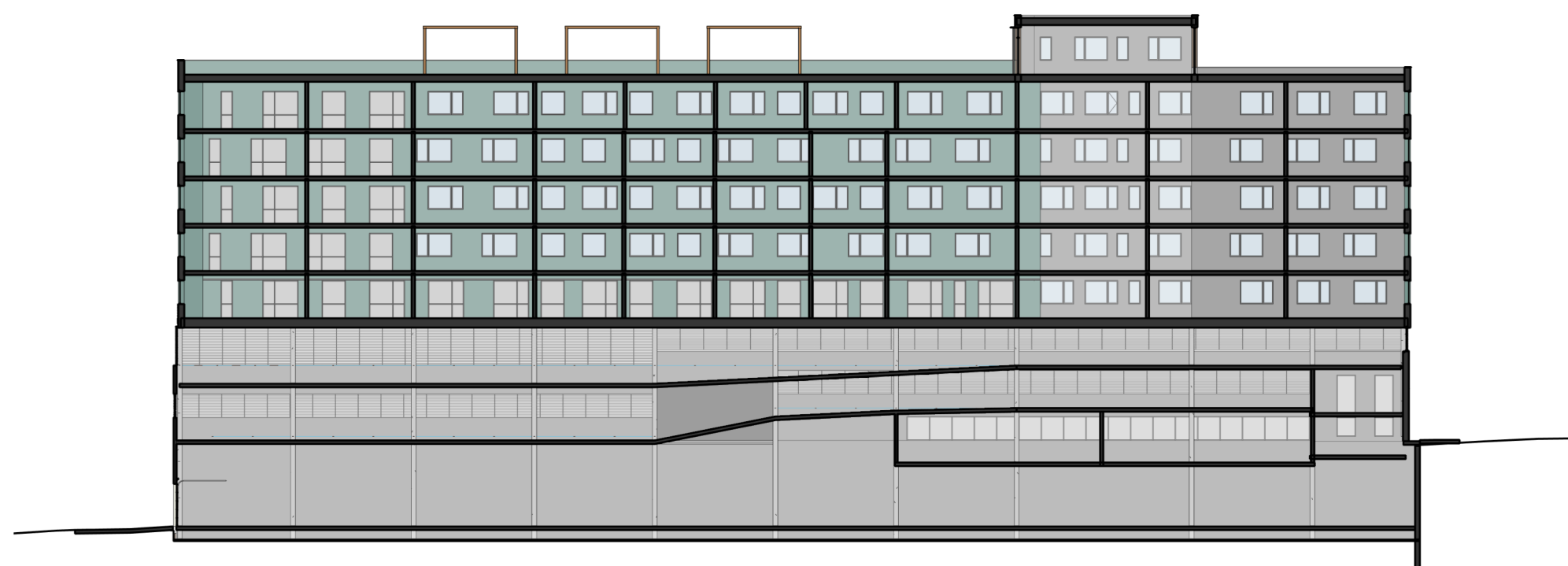




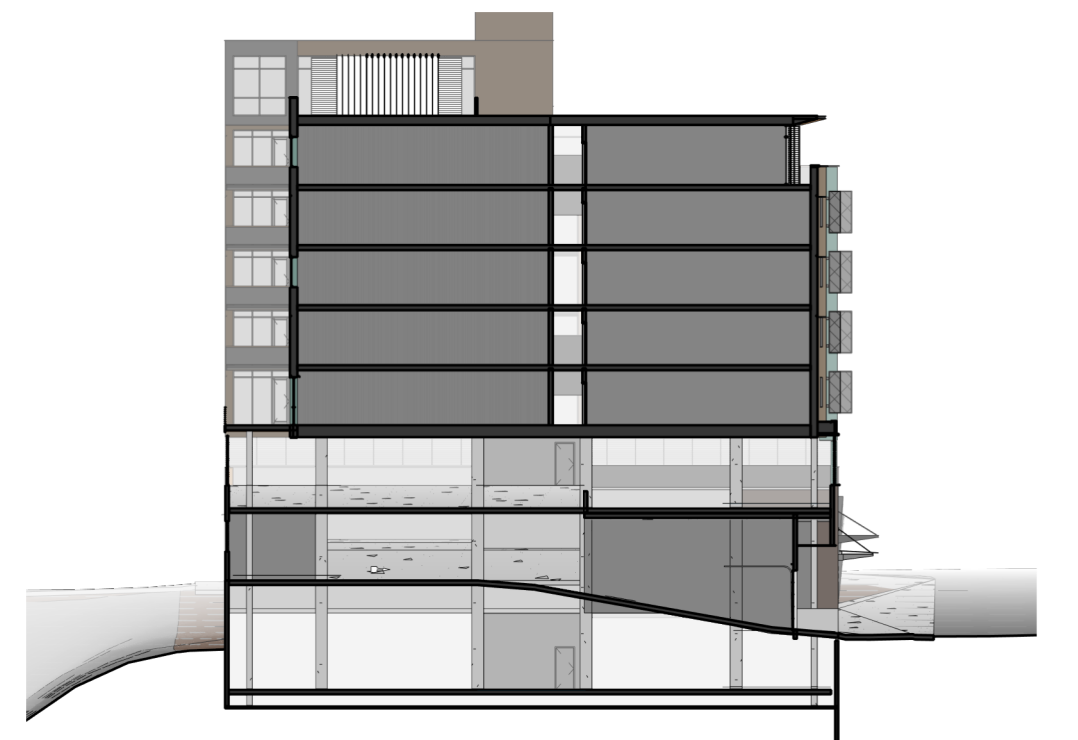
Longitudinal Section - South
 1/32" = 1'-0"



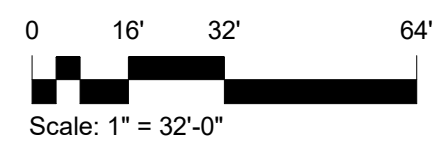
Transverse Section @ Residential Entry
 1/32" = 1'-0"

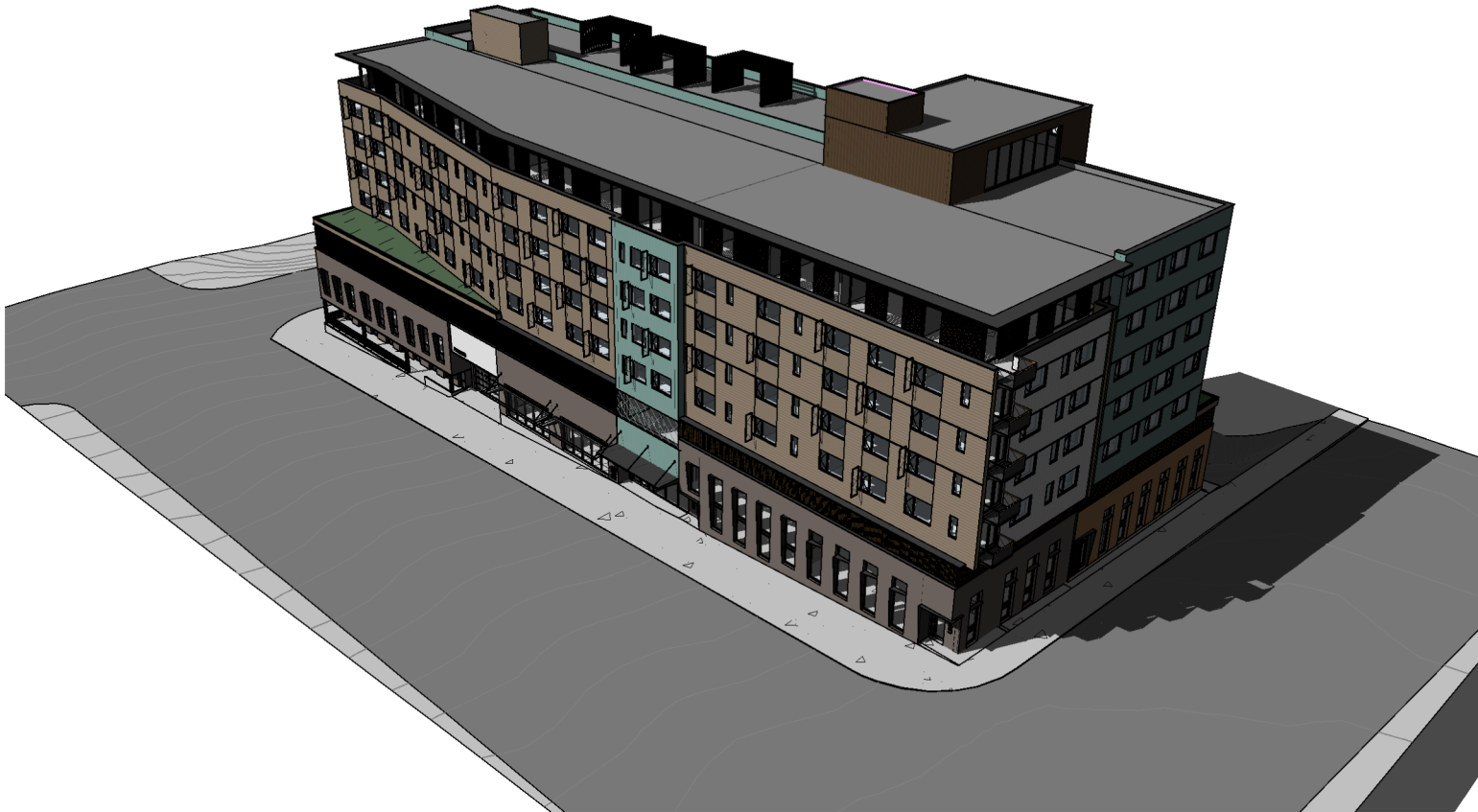


Longitudinal Section - North
 1/32" = 1'-0"

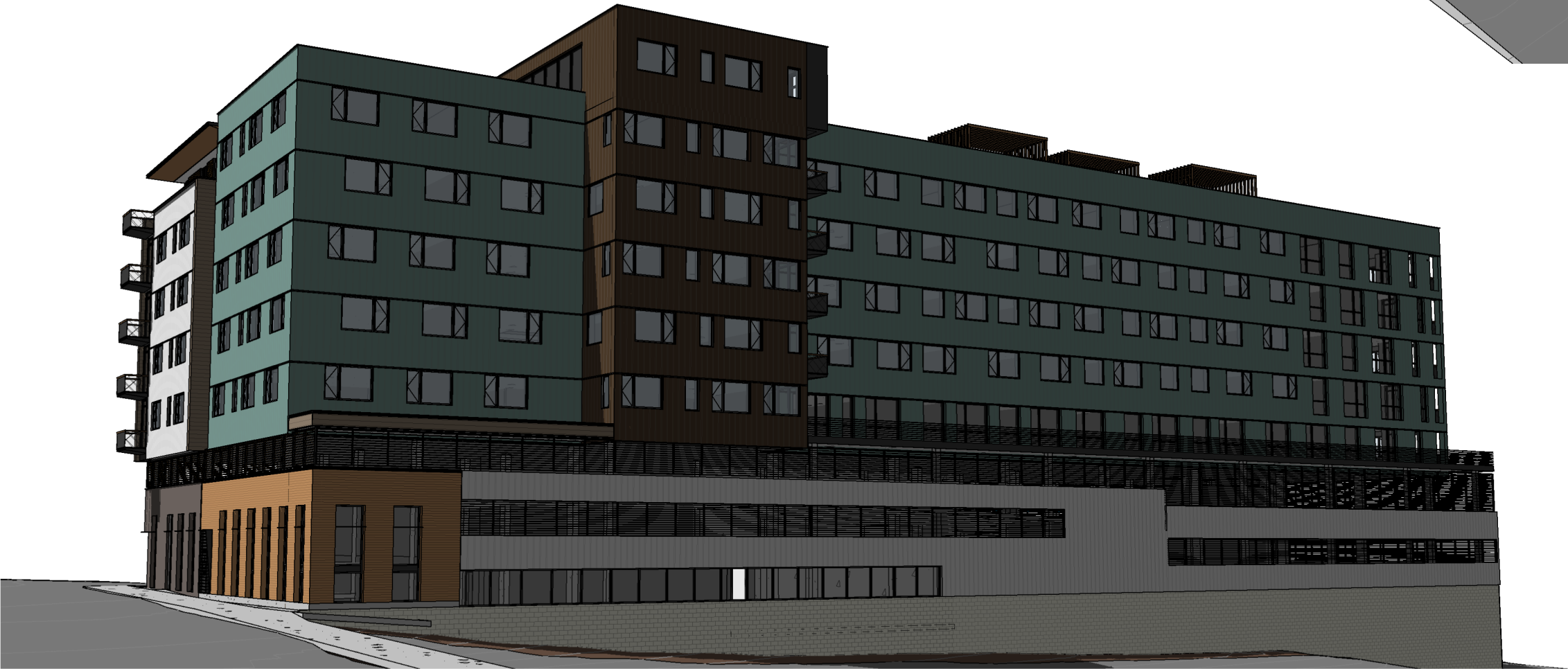


Transv. Sec. @ Upper Parking Access
 1/32" = 1'-0"





Bird's-Eye View - South East Corner



North East View

Lapinski

Hewitt Ave Multi-Family Project
Everett, WA

Option B - Project Summary

Total Units: #122 Units (as illustrated)

#7 Loft
#20 Studio (+/- 500 SF)
#45 One Bedroom (+/- 700 SF)
#25 One+ Bedroom (+/- 850 SF)
#25 Two Bedroom (+/- 1200 SF)

Total Parkings: #172

Total Units: #147 Units (with increased density)

#7 Loft
#90 Studio (+/- 500 SF)
#50 One Bedroom (+/- 700 SF)



South West View



South East View



1111 Hewitt
Development Site