

137 Peter

Fully Fixtured Restaurant for Lease with 1,400 SF Rooftop Patio
In the Heart of Toronto's Entertainment District



CBRE urban retail team

Property Details

Address:	137 Peter Street, Toronto
Size:	5,245 sq. ft. above grade + rooftop patio & basement
Liquor License:	Indoor Total: 167 Patio Total: 141
Net Rent:	\$50.00 per sq. ft.
TMI:	\$30.00 per sq. ft.
Available:	Immediately

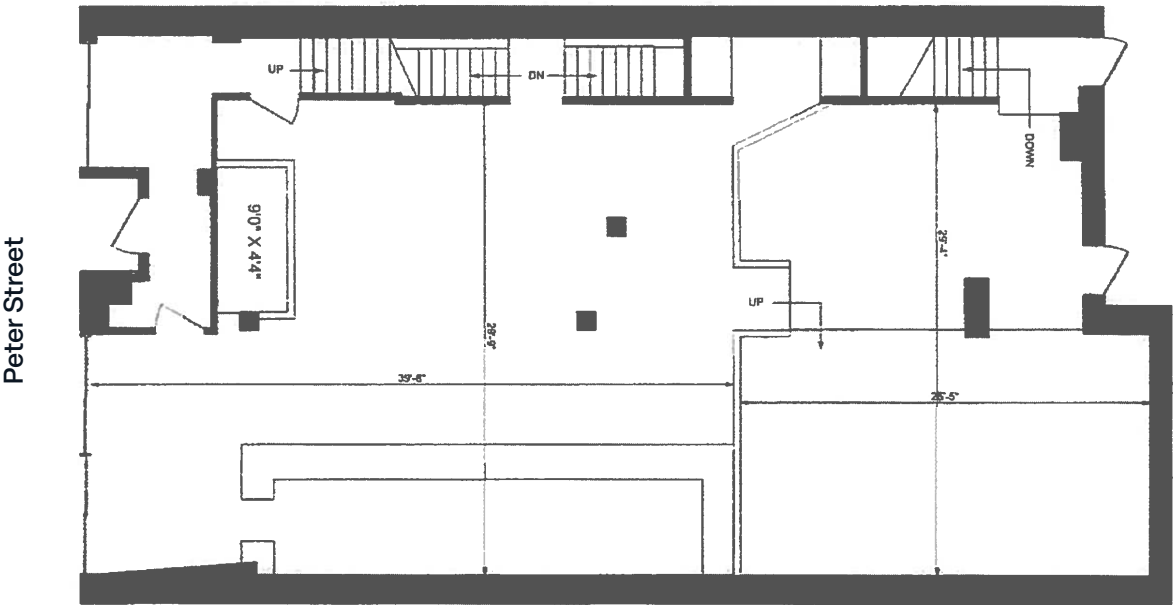
- Fully fixtured restaurant with an incredible rooftop patio (over 1,400 SF) in the heart of Toronto's Entertainment District
- The landord has possession of a liquor license and is available for use
- Includes a 1,266 sq. ft. basement
- Ideally located just off the Queen West shopping strip and only steps to King West
- Neighbouring retailers include MEC, Northeastern University, Brandy Melville, Aritzia, Lululemon, Chick-fil-A, Timbuk2, Icebreaker, Club Monaco, Ollie Quinn and many more

CBRE



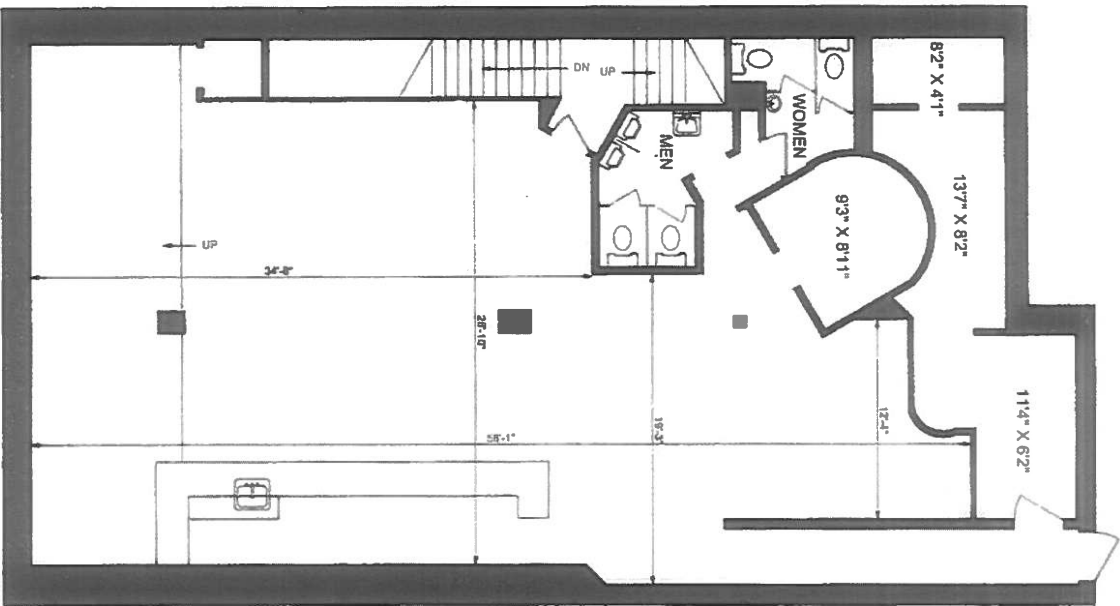
Floor Plans

Ground Floor



Ground Floor

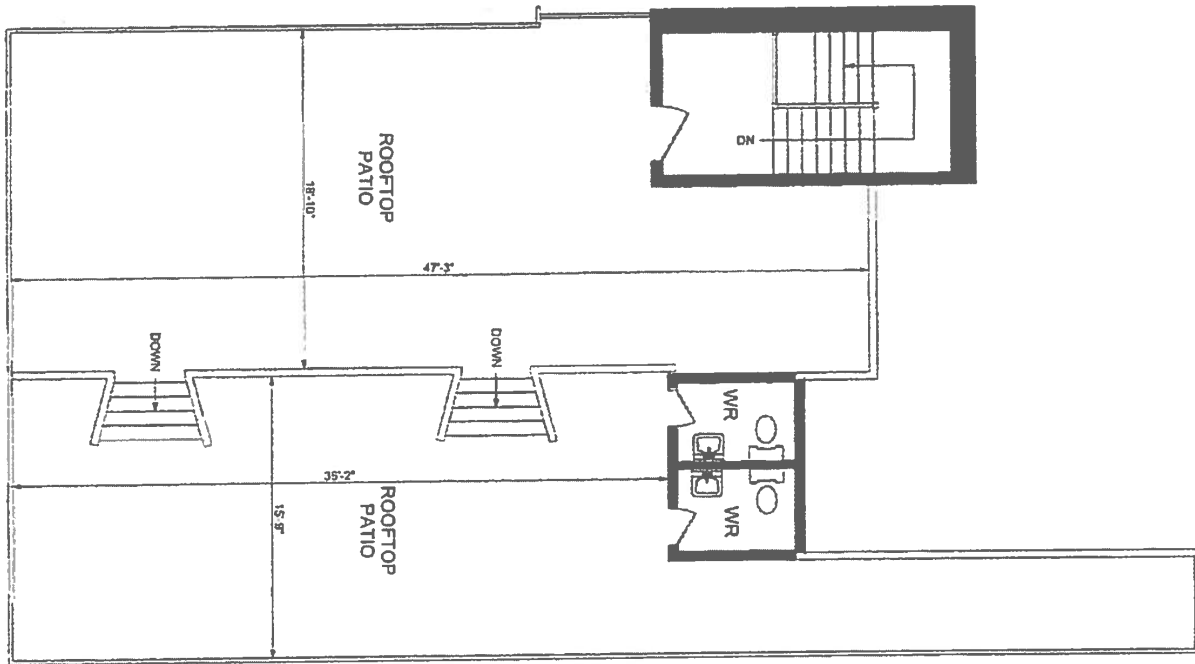
Second Floor



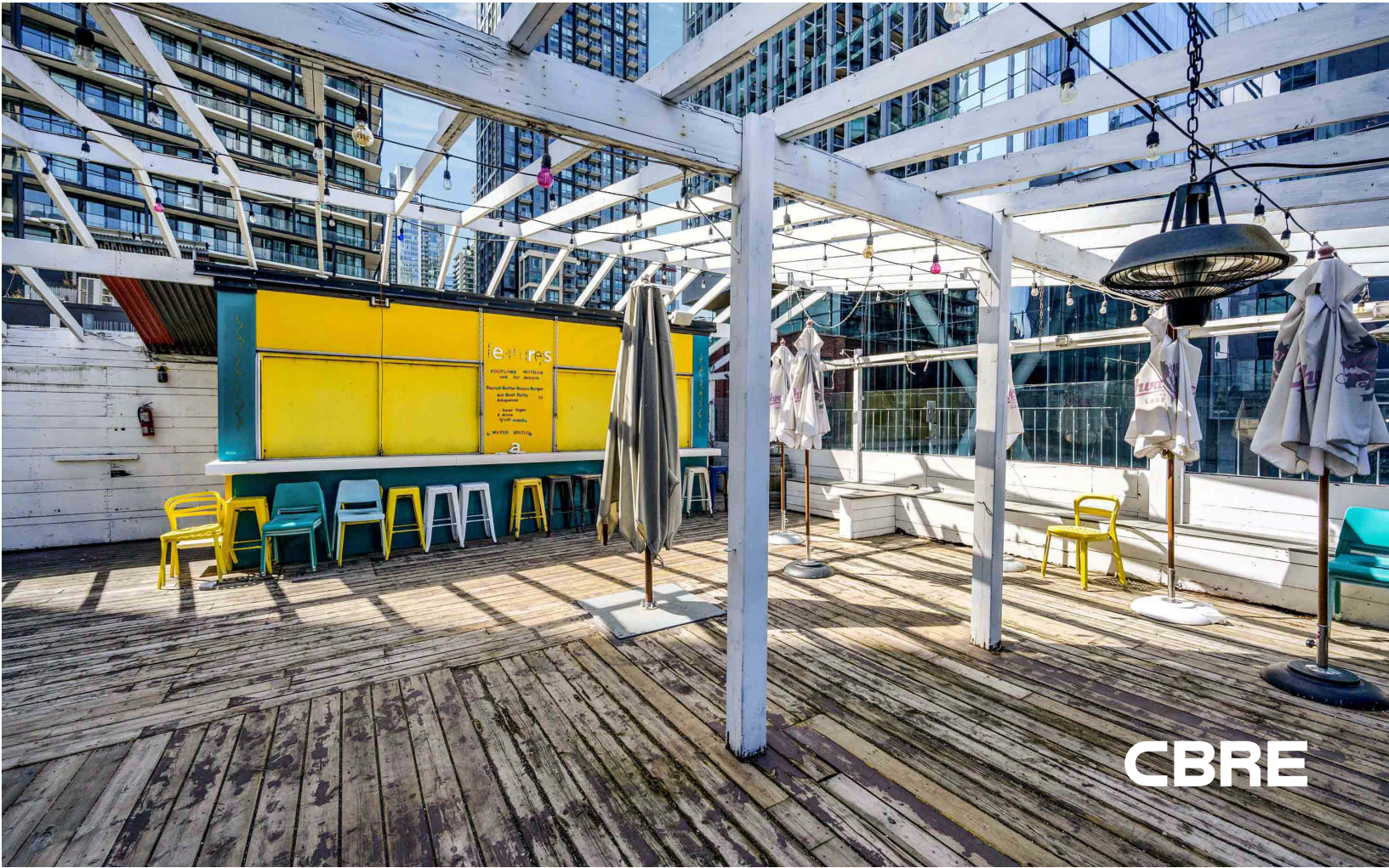
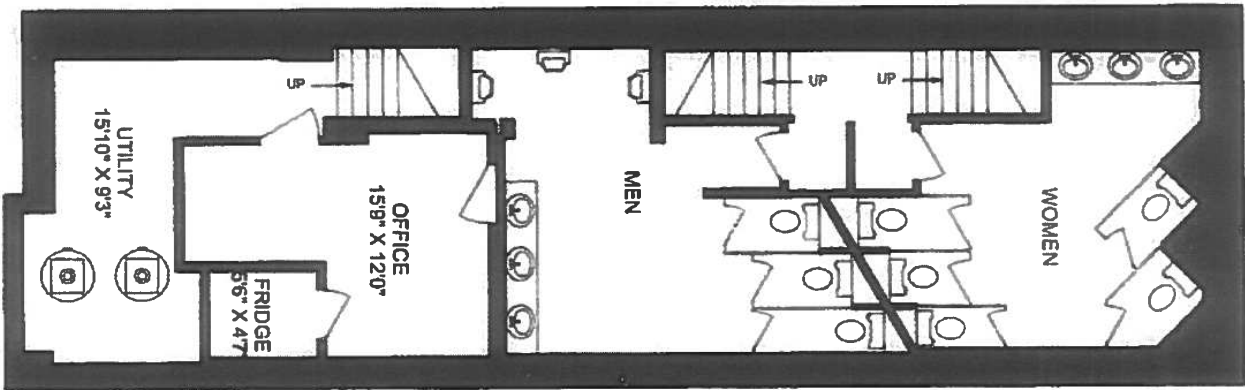
Second Floor

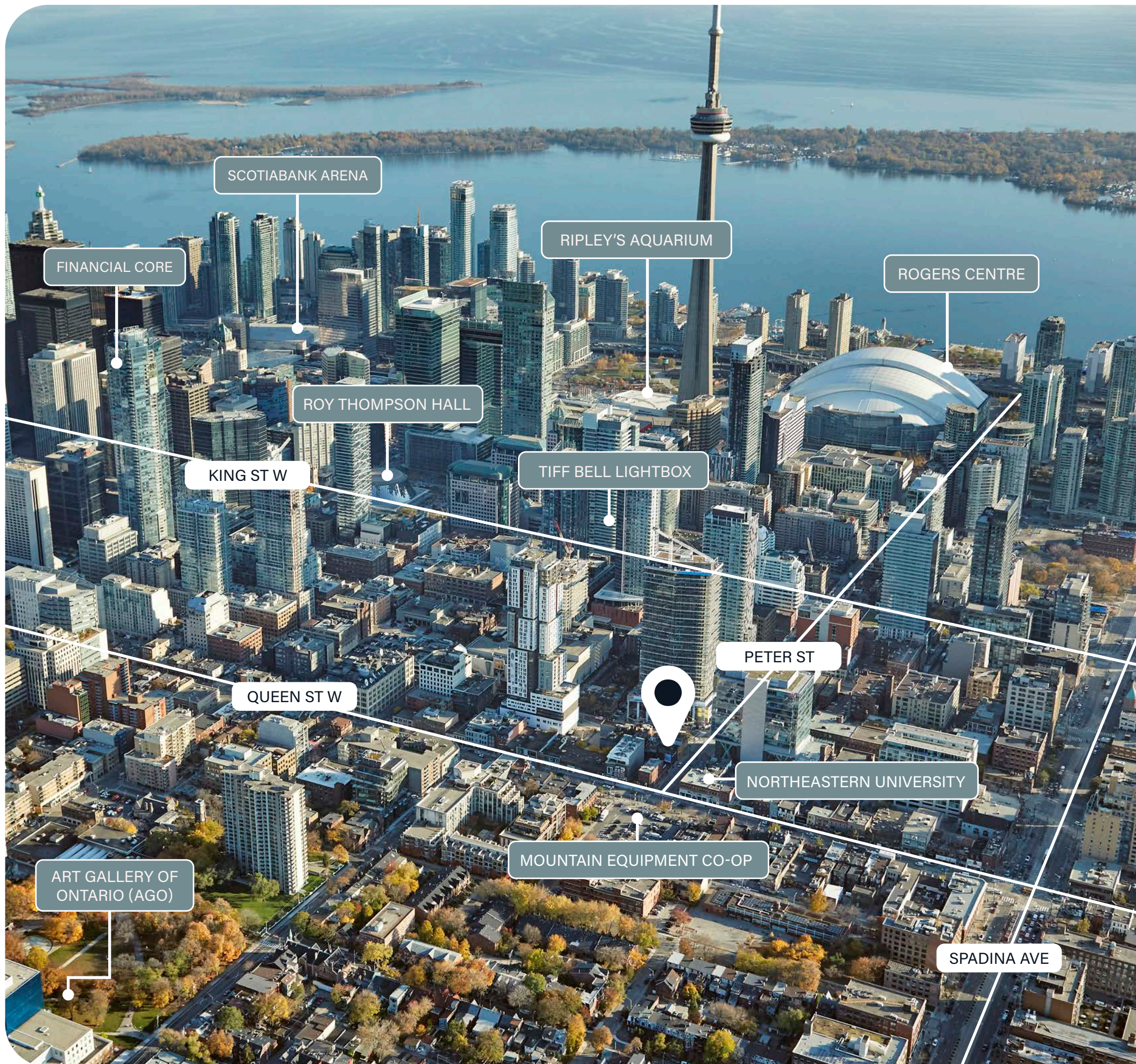
Floor Plans

Rooftop



Basement





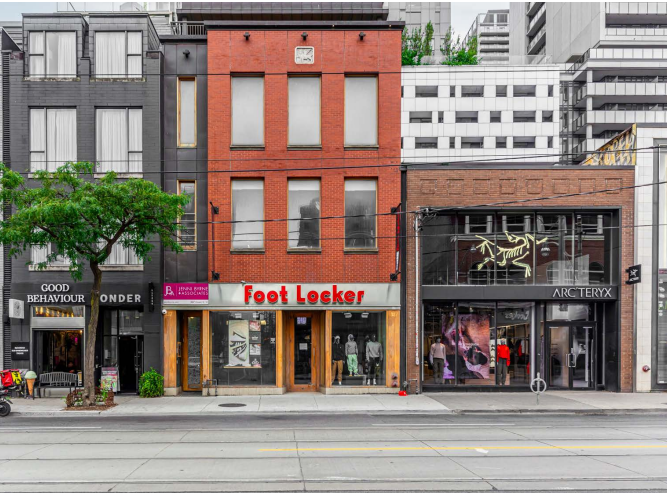
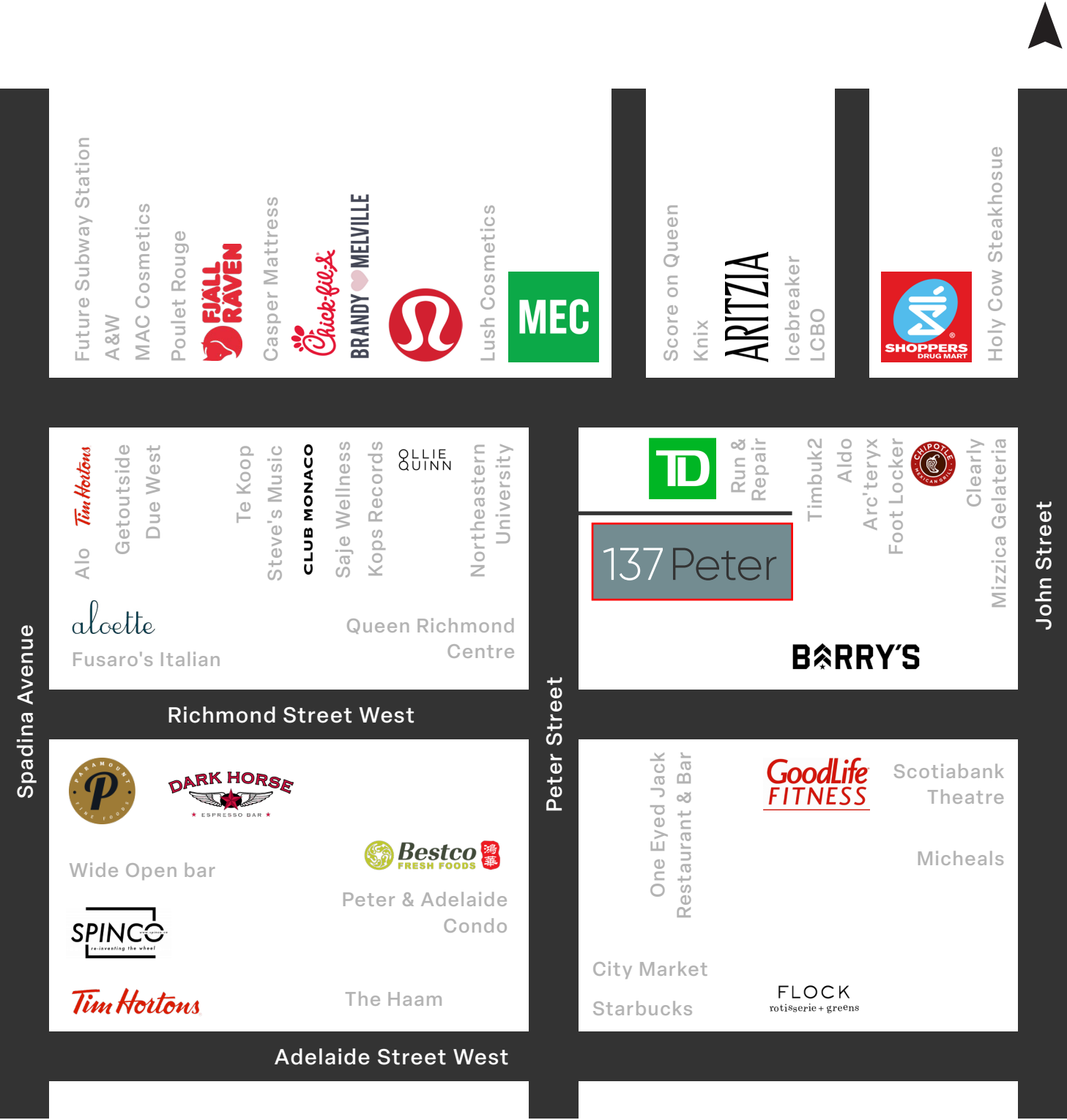
The Location

Situated in the heart of Toronto's vibrant Entertainment District, 137 Peter Street offers a prime retail location with exceptional foot traffic and visibility. Just steps from the most dynamic stretch of Queen Street West, home to premier fashion retailers like Lululemon, Aritzia, Club Monaco, and Brandy Melville, this address benefits from a high-density mix of locals, professionals, and tourists alike.

Directly across the street from Northeastern University's Toronto campus, the Queen Richmond Centre, and the flagship Mountain Equipment Co-op (MEC), the property is ideally placed to capture consistent pedestrian flow from students, office workers, and destination shoppers. Just a short walk south lies King Street West, a busy corridor known for its upscale dining and nightlife.

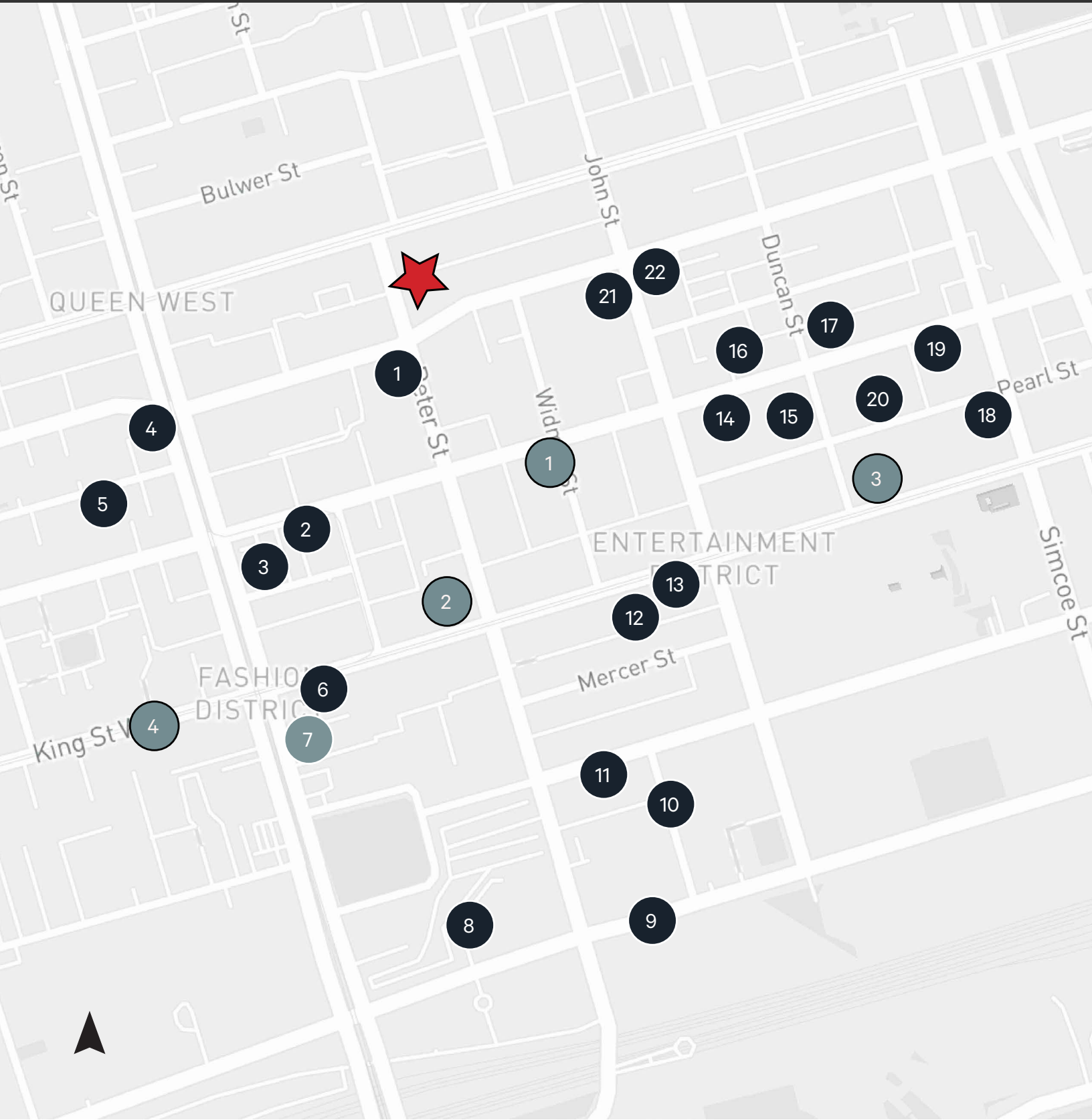
This location also sits within close proximity to many of Toronto's most iconic cultural and entertainment landmarks, including the CN Tower, Ripley's Aquarium, Rogers Centre, Princess of Wales Theatre, Roy Thomson Hall, and TIFF Bell Lightbox, making it a natural draw for both local visitors and international tourists.

Neighbouring Tenants



Neighbouring Developments

Incoming Units: 17,172 + (Within 0.5km)

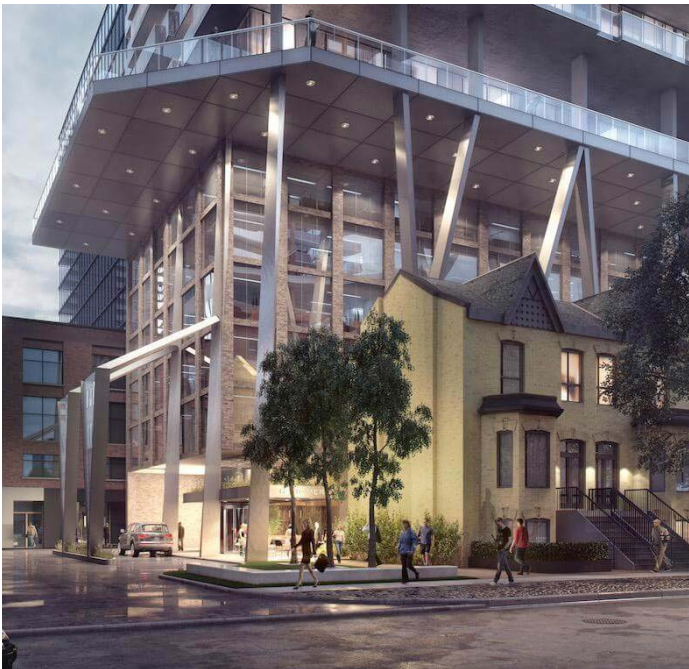


Notable Active Developments

#	Condo	Units
1	Theatre District Condos & Rui Hotel	1,005
2	400 King West	612
3	Forma	2,034
4	KING Toronto	440
	Total	4,091

Notable Development Applications

#	Condo	Units
1	122 Peter	386
2	Spadina Adelaide Square	557
3	101 Spadina Avenue	397
4	8 Camden	200
5	Camden House	237
6	Four Eleven King Condos	435
7	46 Spadina Avenue	550
8	400 Front Street	2,171
9	Union Park	732
10	310 Front West	1,782
11	255 Wellington St W	300
12	Bungalow on Mercer	12
13	305-319 King West	403
14	Natasha Residences	432
15	14 Duncan	369
16	260 Adelaide West	813
17	Freed Hotel & Residences	493
18	212 King Street West	569
19	100 Simcoe	526
20	150 Pearl	482
21	RioCan Hall	693
22	241 Richmond West	479
	Total	13,081



Contact

Urban Retail Team

ARLIN MARKOWITZ*
Executive Vice President
416 815 2374
arlin.markowitz@cbre.com

JACKSON TURNER**
Senior Vice President
416 815 2394
jackson.turner@cbre.com

EMILY EVERETT*
Sales Associate
647 943 4185
emily.everett@cbre.com

ALEX EDMISON*
Senior Vice President
416 874 7266
alex.edmison@cbre.com

TEDDY TAGGART*
Vice President
416 847 3254
teddy.taggart@cbre.com

Office Leasing

CHRIS VALELA*
Associate Vice President
416 662 2477
chris.valela@cbre.com

*Sales Representative **Broker

CBRE

This disclaimer shall apply to CBRE Limited, Real Estate Brokerage, and to all other divisions of the Corporation; to include all employees and independent contractors ("CBRE"). The information set out herein, including, without limitation, any projections, images, opinions, assumptions and estimates obtained from third parties (the "Information") has not been verified by CBRE, and CBRE does not represent, warrant or guarantee the accuracy, correctness and completeness of the Information. CBRE does not accept or assume any responsibility or liability, direct or consequential, for the Information or the recipient's reliance upon the Information. The recipient of the Information should take such steps as the recipient may deem necessary to verify the Information prior to placing any reliance upon the Information. The Information may change and any property described in the Information may be withdrawn from the market at any time without notice or obligation to the recipient from CBRE. CBRE and the CBRE logo are the service marks of CBRE Limited and/or its affiliated or related companies in other countries. All other marks displayed on this document are the property of their respective owners. All Rights Reserved.