

11240 PLAYA COURT *Culver City*



ZACUTO GROUP
COMMERCIAL REAL ESTATE

FOR SALE

OWNER / USER OPPORTUNITY
CREATIVE COMPOUND | OFFICE | WAREHOUSE

11240 PLAYA COURT *Culver City*

Zacuto Group is pleased to bring to market a unique creative compound within an exclusive media district of Culver City.

Surrounded by acclaimed studios and buzzing companies, Playa Court is a hidden enclave in one of Los Angeles' most desirable locations.

LISTING TEAM



JAKE ZACUTO

Managing Director

310.469.9012

jake@zacutogroup.com

BRE #01377441

JACKIE LUBRANO

Senior Vice President

267.278.0443

jackie@zacutogroup.com

BRE #02024601

DETAILS

SALE PRICE

\$11,995,000

PPSF

\$827/SF

BUILDING SIZE

14,503 SF

LOT SIZE

23,522 SF

ZONING

IL

APN

4203-026-020

POWER

1200AMP, 480 V, 3 phase

CEILING HEIGHT

12 - 20ft



112/40
PLAYA
COURT
Culver City



FULLY RENOVATED CREATIVE COMPOUND

Built in 1965, and renovated in 2021. Big and bright sun filled building with skylights. Property offers a mix of private offices, reception /lobby, conference rooms, full kitchen, open spaces and a back warehouse.

Flexible layout for multiple configurations and uses

MODERN UPGRADES

New roof, 3 HVAC units, and upgraded lighting systems.

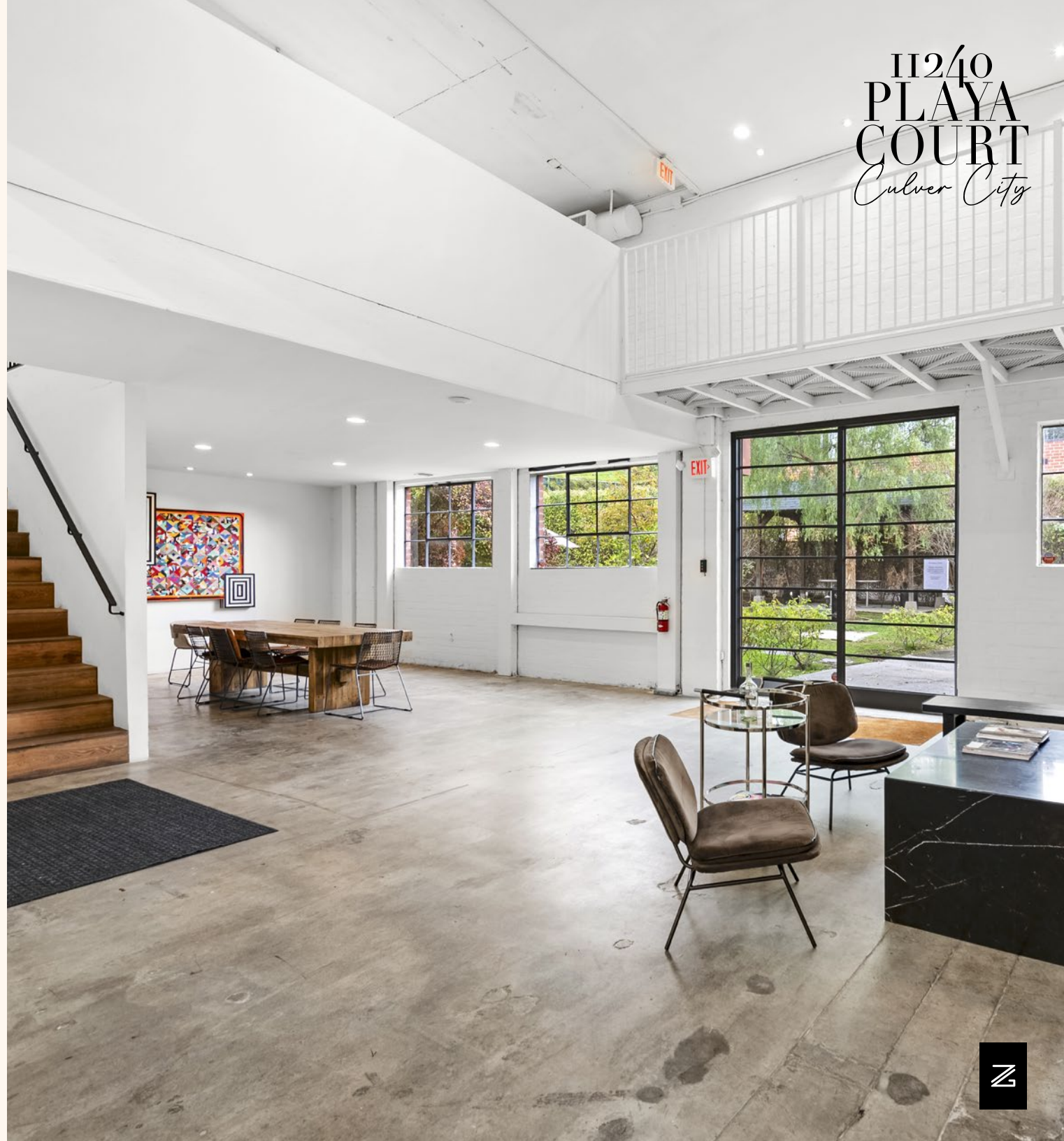
PRIVATE PARKING

On-site gated parking for up to 8 cars + abundant street parking and striped spaces in front of the property

IN GOOD COMPANY

The low profile brick building sits along an exclusive corridor neighboring Sony Studios and Tiktok HQ

112/40
PLAYA
COURT
Culver City



FOR SALE

LAX
----->

TikTok

SONY PICTURES COSTUME DEPT

PUNCH STUDIOS

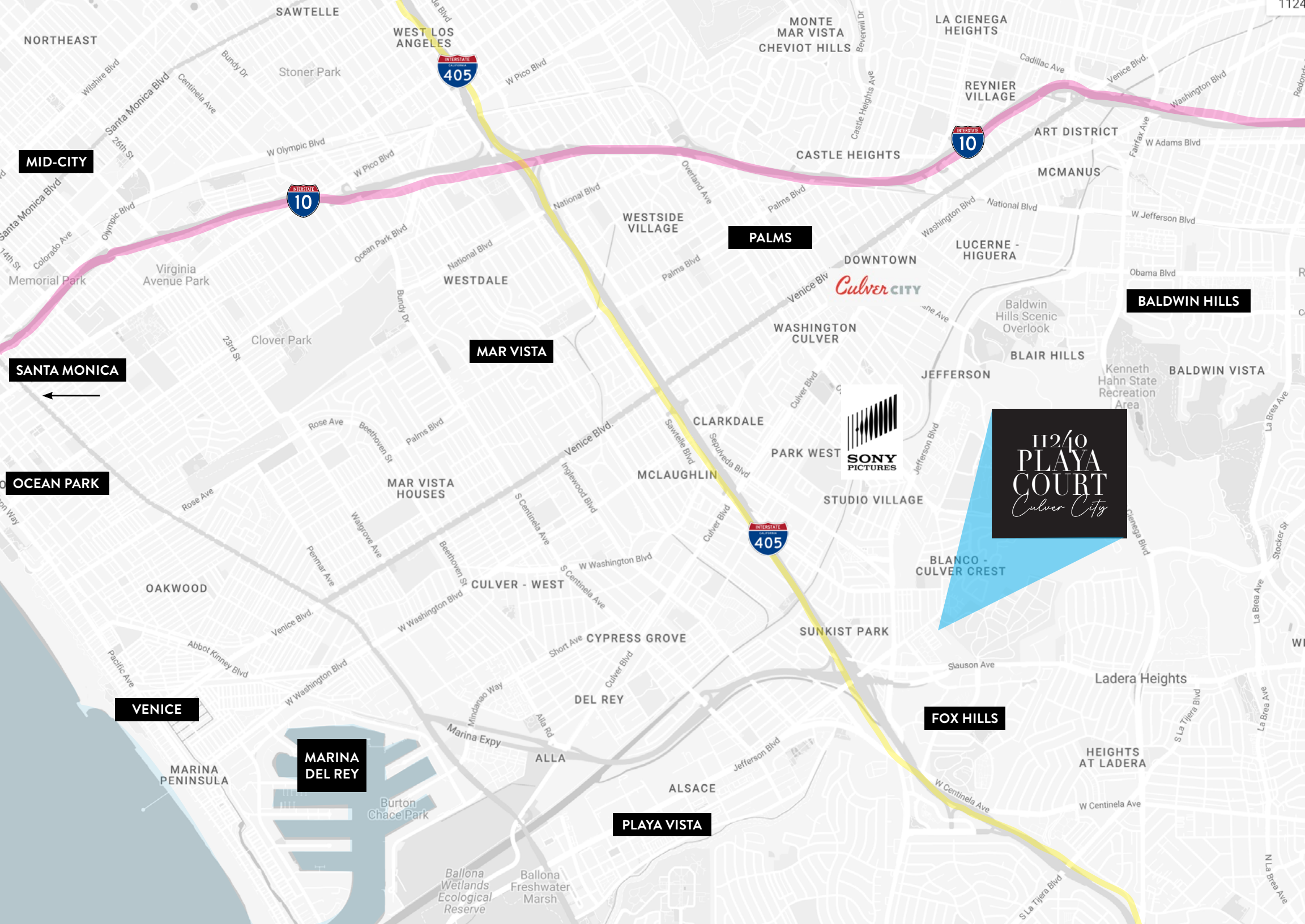
11240
PLAYA
COURT
Culver City

PLAYA STUDIOS

JAMM

BEYOND YOGA





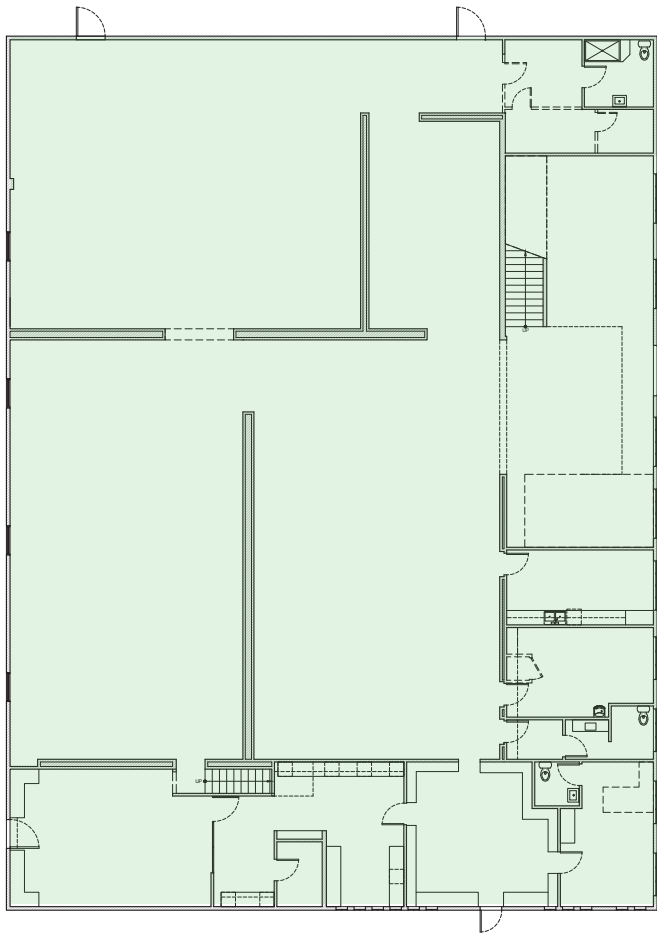
FLOOR PLAN

11240 PLAYA COURT, CULVER CITY, CALIFORNIA

TOTAL SF: 14,503 SF

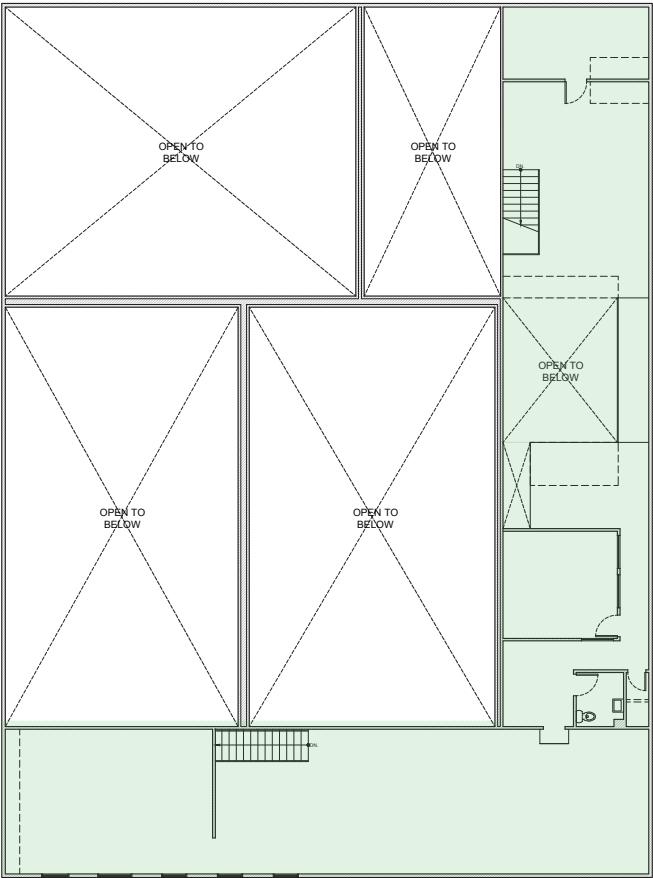
GROUND FLOOR:
11,011 SF

2ND FLR + MEZZANINE:
3,492 SF



100 FT
PLAYA COURT

GROUND FLOOR
11,011 SF



2ND FLOOR / MEZZANINE
3,492 SF

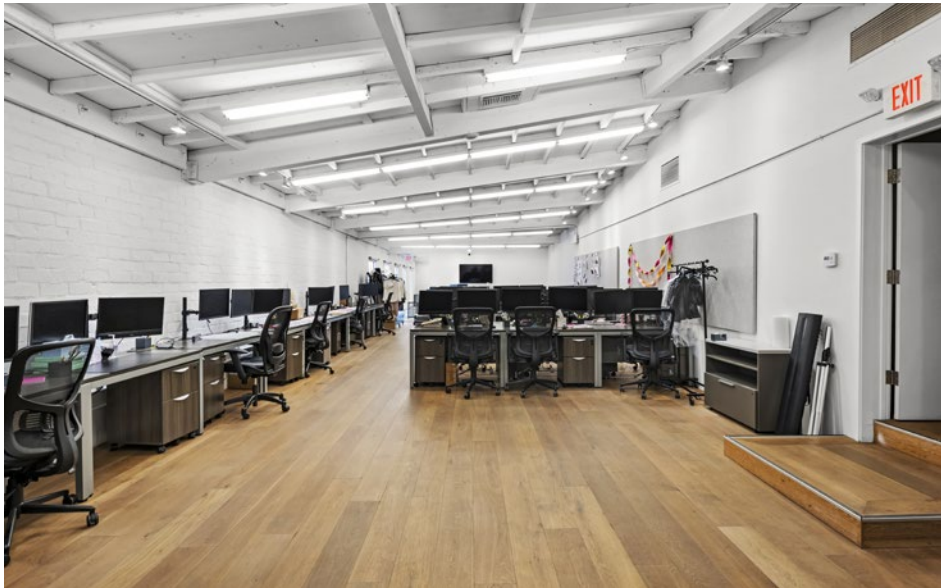


112/40
PLAYA
COURT
Culver City



FOR SALE

11240 PLAYA COURT, CULVER CITY, CALIFORNIA



FOR SALE

11240
PLAYA
COURT
Culver City



FOR SALE

11240 PLAYA COURT, CULVER CITY, CALIFORNIA



ZACUTOGROUP.COM | 310.469.9012

11240
PLAYA
COURT
Culver City



FOR SALE

11240 PLAYA COURT, CULVER CITY, CALIFORNIA



NEIGHBORHOOD AMENITIES

11240 PLAYA COURT, CULVER CITY, CALIFORNIA



📍 JON & VINNY'S SLAUSON



📍 WESTFIELD CULVER CITY



📍 BLUE BOTTLE COFFEE



📍 TOCAYA ORGANIC



📍 HOWARD HUGHES ENTERTAINMENT



📍 TRADER JOES

11240
PLAYA
COURT
Culver City



ZACUTO GROUP
COMMERCIAL REAL ESTATE

JAKE ZACUTO

Managing Director

310.469.9012

jake@zacutogroup.com

BRE #01377441

JACKIE LUBRANO

Senior Vice President

267.278.0443

jackie@zacutogroup.com

BRE #02024601

No warranty, express or implied, is made as to the accuracy of the information contained herein. This information is submitted subject to errors, omissions, change of price, rental or other conditions, withdrawal without notice. All parties who receive this material should not rely on it, but should use it as a starting point of analysis, and should independently confirm the accuracy of the information contained herein through a due diligence review of the books, records, files and documents that constitute reliable sources of the information described herein. Logos and images are for identification purposes only and may be trademarks of their respective companies. All terms provided are approximate. Parties to verify. 9/2025

ZACUTOGROUP.COM | 310.469.9300

