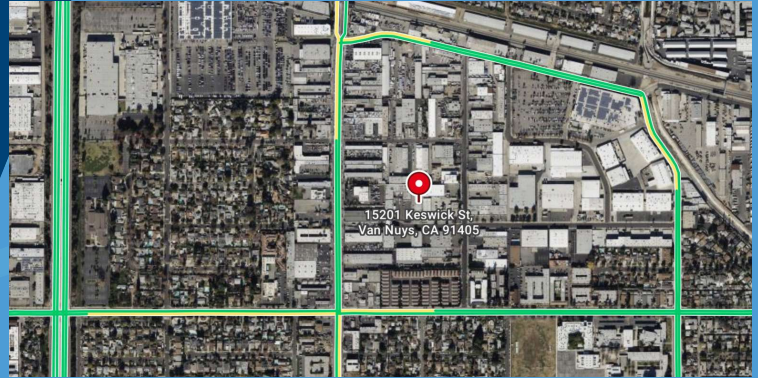


# Industrial Unit For Lease

1,850 sq ft unit, part of a larger

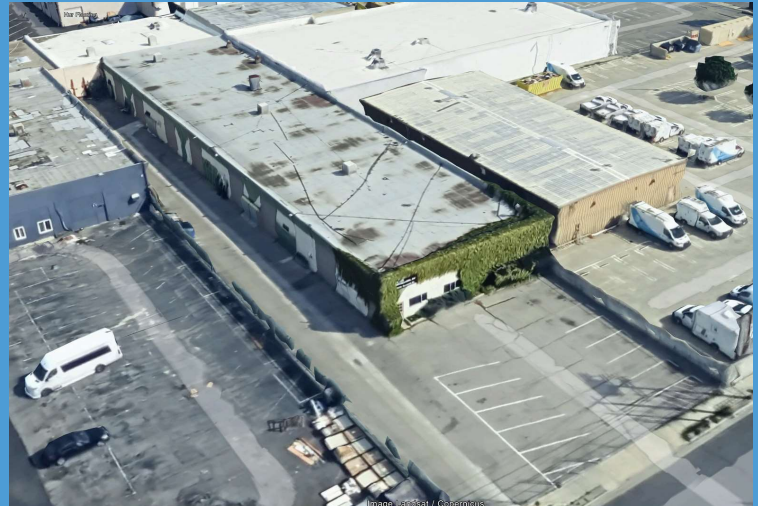


15201 Keswick Street  
Unit 7  
Van Nuys, CA 91405



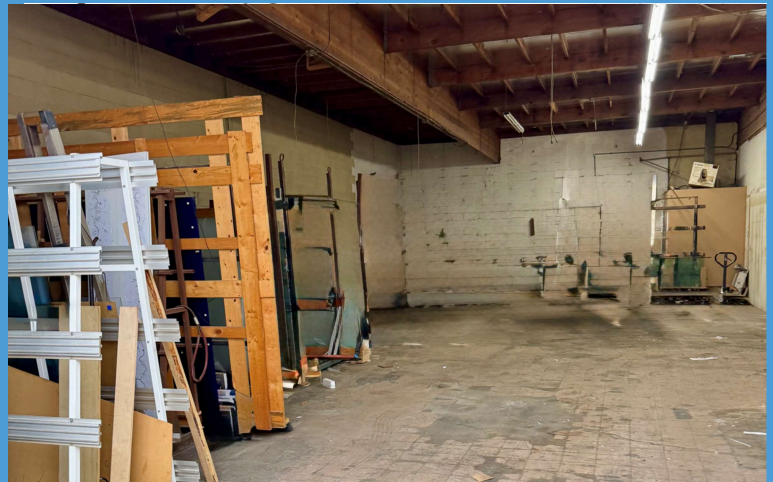
## Property Highlights:

- Rare Incubator Van Nuys Unit
- New Roof
- Fenced Yard
- Close Proximity to Interstate 405
- Clear Height: 14'
- Parking: 2
- Loading Door: 1
- SQFT: 1,850
- Lease Rate: \$1.50 psf gross



## Location Highlights:

- Extremely Rare Central SFV Location
- Amenity Rich Location Van Nuys
- Access Points Easy Access to Interstates and Freeways
- LA City M1 Industrial Zone



## Triniti Partners, Inc.

27959 Smyth Drive, Valencia, CA 91355  
818.788.3800 [www.trinitipartners.com](http://www.trinitipartners.com)

**Colette Ramirez** Lic. 01826205  
T818.788.3800 | Ext102 | C 661.208.6640  
[colette.ramirez@trinitipartners.com](mailto:colette.ramirez@trinitipartners.com)

This information supplied herein is from sources we deem reliable. It is provided without any representation, warranty or guarantee, expressed or implied as to its accuracy. Prospective Buyer or Tenant should conduct an independent investigation and verification of all matters deemed to be material, including, but not limited to, statements of income and expenses. Consult your attorney, accountant, or other prof. advisor.