

## Epicentre

18000 W 9 Mile Rd, Southfield, MI 48075-4403

This Southfield landmark property recently served as the headquarters of IBM. The building features state of the art mechanical systems, including energy efficient automated HVAC, recently upgraded elevators and sprinkler systems throughout, and a 5' underfloor grid system for ease of electric, phone and computer installation. Additional features include basement storage, on-site ATM, 24-hour manned security, a drive up loading deck, and Federal Express and U.S. Postal on-site. Easy access from the Lodge Freeway, Southfield Freeway, and Nine Mile Rd. The landmark property is centrally located with visibility from M10 and the Southfield Freeway.

Contact: Tarik Dinha

Owner, Epicentre LLC

(248) 343-3582 (p) | (248) 343-3582 (m)

tarikdinha@gmail.com





# Epicentre

18000 W 9 Mile Rd, Southfield, MI 48075-4403

## Available Suites with Flexible terms:

**3rd Floor - Suite 340** (1,621 SF Available)

reception area, 3 private offices, conference room bullpen

**8th Floor - Suite 800** (17,488 SF Available)

turnkey call center fully furnished, perimeter offices two conference rooms, move in ready. Fresh 2021 renovations.

**10th Floor - Suite 1000** (17,488 SF Available)

ultra modern google image space, glass conference rooms, private gyms, kitchen, executive bathroom, 3 showers, \$25.00 a foot space on sale for \$14.95 (over \$1,000,000.00 tenant improvement dollars invested).

Contact: Tarik Dinha

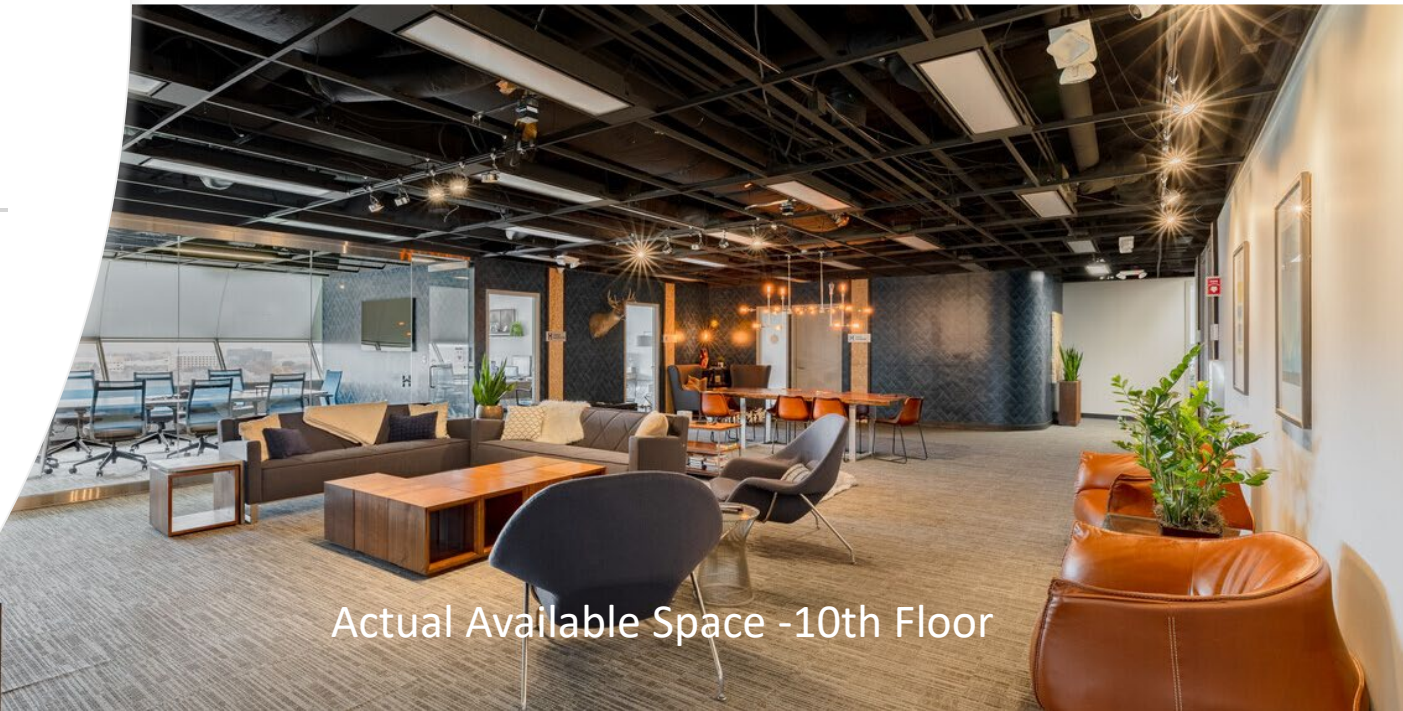
Owner, Epicentre LLC

(248) 343-3582 (p) | (248) 343-3582 (m)

tarikdinha@gmail.com



Actual Available Space -10th Floor



Actual Available Space -10th Floor