

PUCKETT FERRY RD



*Offering Memorandum*

LARGE TRACT DEVELOPMENT OPPORTUNITY IN GREENWOOD, SC

PUCKETT FERRY RAIL SITE | ±116.3 TOTAL ACRES



# TRANSACTION *team*



*David Sigmon*  
CCIM, SIOR

PARTNER, BROKER  
david@pintailcre.com  
864.430.8060



*Matt Vanvick*  
CCIM, SIOR

PARTNER, BROKER  
matt@pintailcre.com  
864.414.7005



*Reynolds Flowe*

BROKER  
reynolds@pintailcre.com  
864.980.8951



PO BOX 9776 . GREENVILLE SC 29604  
864.729.4500 · WWW.PINTAILCRE.COM



## CONFIDENTIALITY STATEMENT

The information contained herein is intended to give the reader ample information about the subject property. All information has been gathered from sources we deem to be reliable and credible; however, no warranty or guarantee, in any manner whatsoever, is intended or made as to its accuracy and none may be expressed, or implied by anything herein contained or made by agent of the principal relative to the subject property.

The Financial Projections attached are for illustration purposes only. Such projections, which are forward-looking statements, are based upon assumptions which are deemed by the company to be reasonable. However, such assumptions are based upon facts and events over which the company will have no control. There is no assurance that actual events will correspond with the assumptions. Assumptions on which the financial projects are based should be carefully reviewed by each investor or his or her financial advisor.

This submission is confidential. It is the property of Pintail Capital Partners, LLC, and any reproduction of any portion of the enclosed without written consent from an official representative of Pintail Capital Partners, LLC, is strictly prohibited. The information offered here is subject to prior placement and/or withdrawal from the market, cancellation, modification, correction, errors, omissions, price changes, or any other changes without notice.

Please make arrangements with Pintail Capital Partners, LLC, prior to any property inspections.



# PUCKETT FERRY RAIL SITE

## *property details*

The Puckett Ferry Rail site is approximately 116.3 acres with rail access serviced by CSX Transportation. Situated along Greenwood's industrial corridor, the site is surrounded by manufacturing facilities including: Tejin, FujiFilm, Velux, Ascend, Eaton, Cardinal Health and Lonza.

Positioned on a two-lane highway, a new four-lane highway will break ground in 2024, creating connectivity to I-26 (approximately 30 minutes) and I-85 (approximately one hour). As well, two high-quality labor sources, Piedmont Technical College and Lander University are just minutes from the property.

---

<b>ADDRESS/LOCATION</b>	308 + 404 Puckett Ferry Rd
<b>PARCEL NUMBER(S)</b>	6877-946-745 (±67.46 AC) 6887-056-816 (±48.84 AC)
<b>TOTAL ACREAGE</b>	±116.3 AC
<b>ZONING</b>	I-1/R-DD ✓ Opportunity Zone ✓ State Tax Incentives ✓ County Tax Incentives
<b>RAIL</b>	CSX Transportation

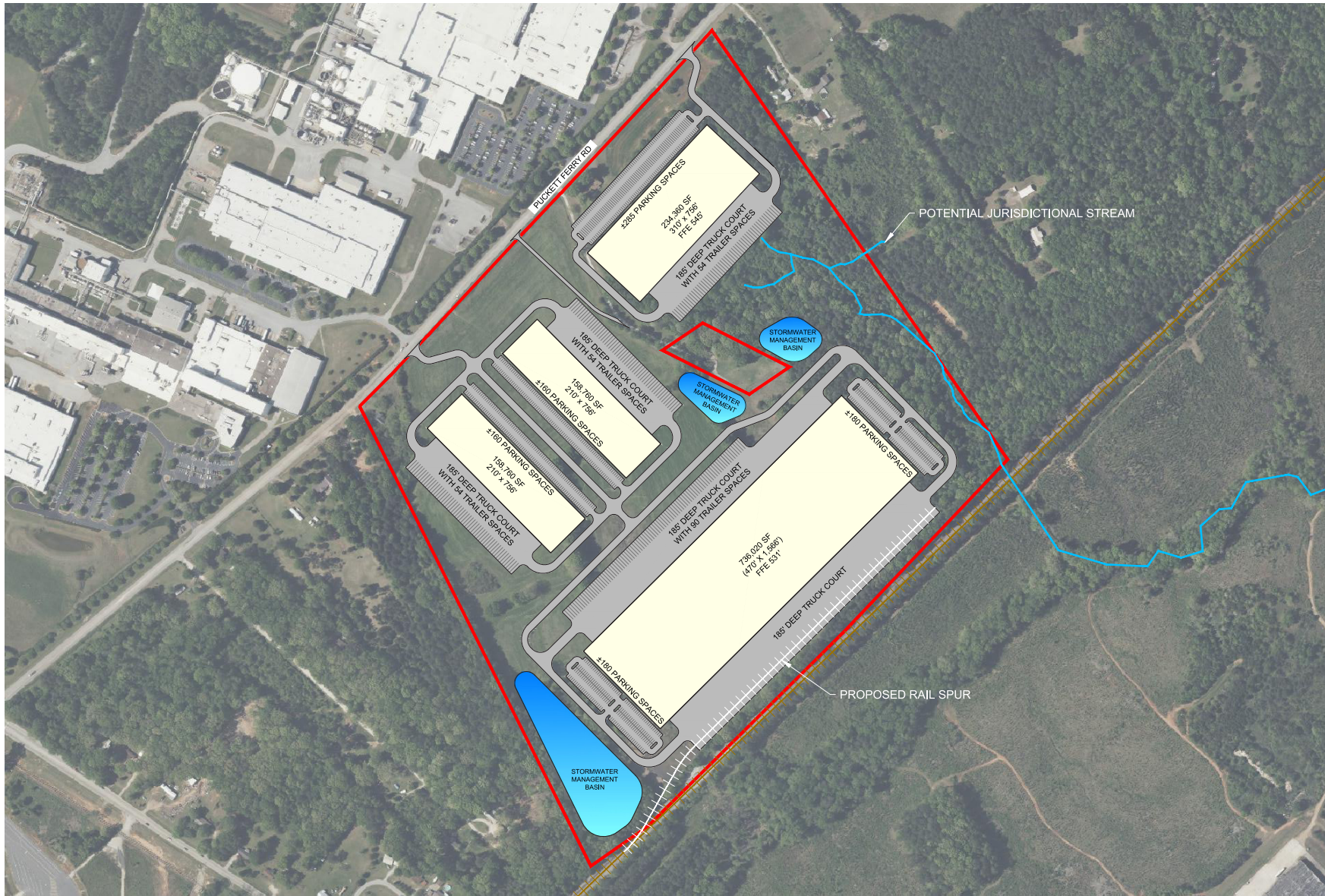
**ASKING PRICE:** **\$3,256,400**  
\$28,000/AC





# PUCKETT FERRY RAIL SITE




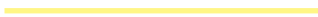
*conceptual layout*





# PUCKETT FERRY RAIL SITE

## *utilities + zoning*

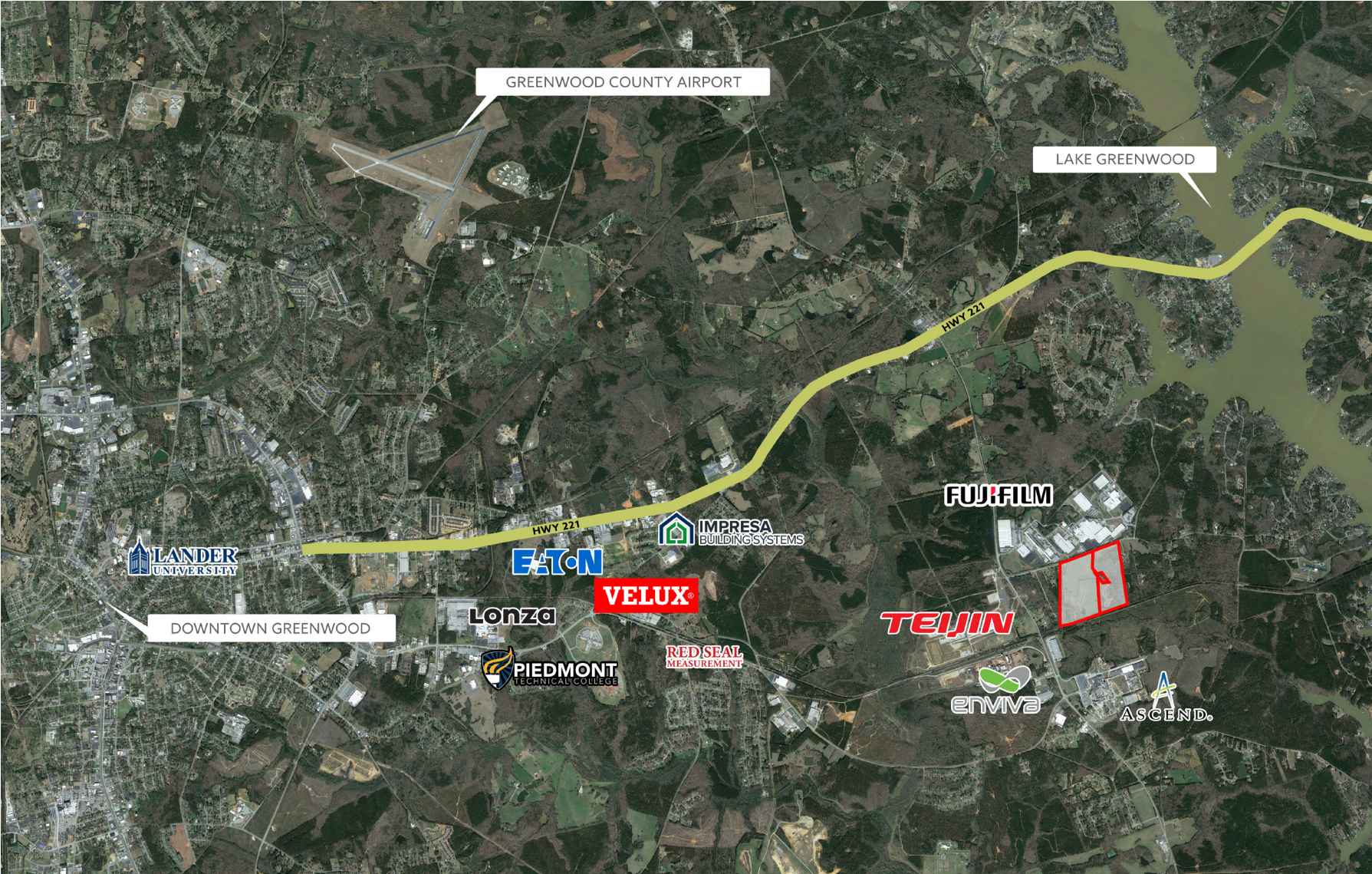
<b>SEWER</b>		Greenwood Metropolitan District Gravity Sewer
		Sewer - Force Main
Distance to primary sewer:		0 ft
<b>WATER</b>		Greenwood Commissioner of Public Works
Distance to primary water line:		0 ft
<b>GAS</b>		Greenwood Commissioner of Public Works
Distance to primary natural gas line:		0 ft
<b>POWER</b>		Duke Energy
Distance to primary electric service:		0 ft
<b>TELECOM</b>		WCFiber, Vyve Broadband
<b>ZONING</b>		I-1/R-DD





# PUCKETT FERRY RAIL SITE

*surrounding area*





# MARKET *overview*

Located in Upstate, South Carolina, Greenwood County is home to many global companies, including Fujifilm's North American headquarters, along with thousands of innovative small businesses.

Greenwood boasts an excellent quality of life and an overall cost of living index lower than state and national averages. Additionally, the Greenwood community supports two institutions of higher learning, elevating the quality of the labor pool.

With its modern and diverse economic base and approximately 26% of the county's large and ready workforce dedicated to the industry, Greenwood has become a hub for new manufacturing developments.

## *county demographics*

<b>TOTAL POPULATION</b>	<b>69,258</b>
<b>TOTAL HOUSEHOLDS</b>	<b>27,403</b>
<b>OWNER OCCUPIED HH</b>	<b>63.9%</b>
<b>AVG HH INCOME</b>	<b>\$67,671</b>
<b>MEDIAN AGE</b>	<b>40</b>

## *major employers*

Self Regional Healthcare	Lonza
Teijin	E.A. Sween Co.
Eaton Corporation	Cardinal Health
Fujifilm	Colgate Palmolive
Carolina Pride Foods	Clemson Center for Human Genetics





## GREENVILLE

Greer Inland Port   
GSP Airport 

## COLUMBIA

 CAE Airport

## AUGUSTA

 AGS Airport

## CHARLESTON

 CHS Airport  
 Port of Charleston

## KEY DISTANCES

*from Greenwood*

I-26	27 miles
I-85	44 miles
I-20	55 miles
GREENVILLE, SC	54 miles
AUGUSTA, GA	58.9 miles
COLUMBIA, SC (SC STATE CAPITAL)	83.6 miles
CHARLOTTE, NC	123 miles
ATLANTA, GA	156 miles
CHARLESTON, SC	193 miles



For more information,  
please contact:

*David Sigmon, CCIM, SIOR*

PARTNER, BROKER  
david@pintailcre.com  
864.430.8060

*Matt Vanvick, CCIM, SIOR*

PARTNER, BROKER  
matt@pintailcre.com  
864.414.7005

*Reynolds Flowe*

BROKER  
reynolds@pintailcre.com  
864.980.8951



PO BOX 9776 . GREENVILLE SC 29604  
864.729.4500 . [WWW.PINTAILCRE.COM](http://WWW.PINTAILCRE.COM)

