

THE HISTORIC LOWENSTEIN BUILDING

756 JEFFERSON AVENUE | MEMPHIS, TN 38105

FOR SALE

GILL
PROPERTIES

6815 POPLAR AVE, SUITE 110
GERMANTOWN, TN 38138
901.758.1100



LOWENSTEIN HOUSE

Status: Preserved

Address: 756 Jefferson Avenue

Built: 1890-1891

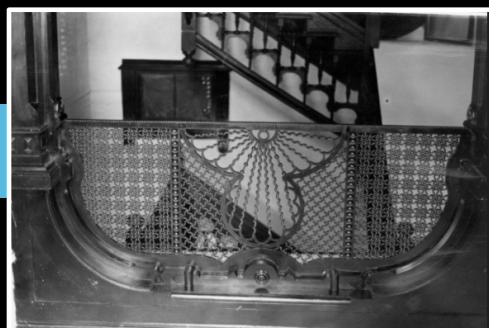
Architectural Style: Italianate Queen Anne

Listed on the National Register of Historic Places: March 23, 1979

Register Reference Number: 79002473

Located: The Memphis Medical District

THE HISTORY: Elias Lowenstein came to Memphis in 1869 to join his brothers in the dry-goods business. The brothers had earlier opened what would become one of the city's leading department stores. Elias took control of the business after finding his brother dead and built this house on the edge of the fashionable Adams Avenue district. In 1921 his daughter Celia Lowenstein donated the property to the elite women's philanthropic organization, the Nineteenth Century Club, to be used as a boarding house for young women who had come to Memphis from rural areas to work in factories during and after World War I. The property became a treatment center for mental health outpatients in 1979. After returning to private hands for several decades, it was purchased in 2021 by preservationist Bill Townsend who looks forward to re-purposing it into a boutique hotel in consultation with Memphis Heritage. In 2024 the developer received a \$300,000 Tennessee Historic Development Grant from the Tennessee Department of Economic and Community Development.



GILL
PROPERTIES

FOR MORE INFORMATION:

FRANK DYER III, CCIM, RPA 901.277.8183

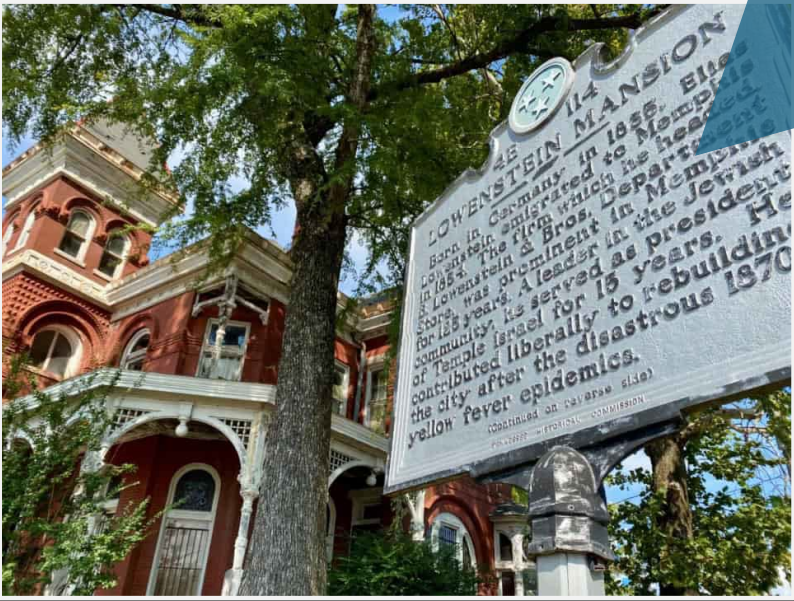
BARRY MAYNARD 901.230.4265

BETH FLANAGAN 901.484.4309

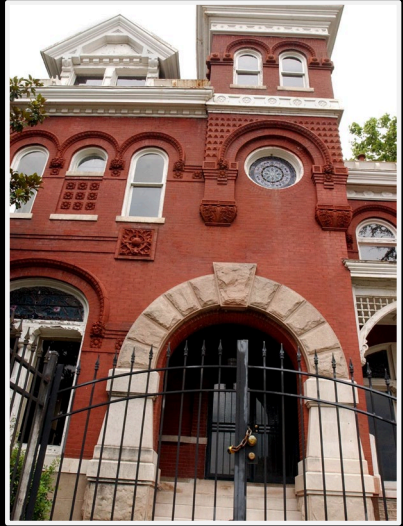
OFFICE: 901.758.1100

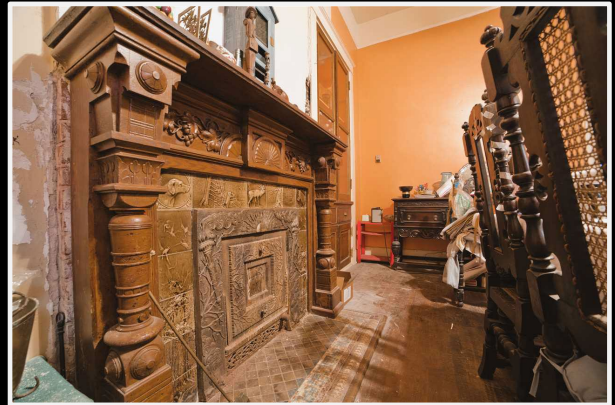
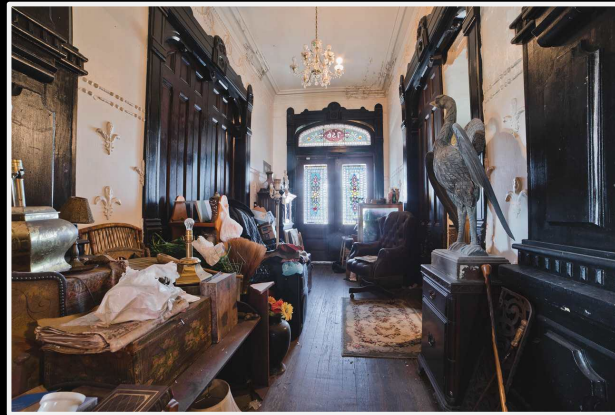
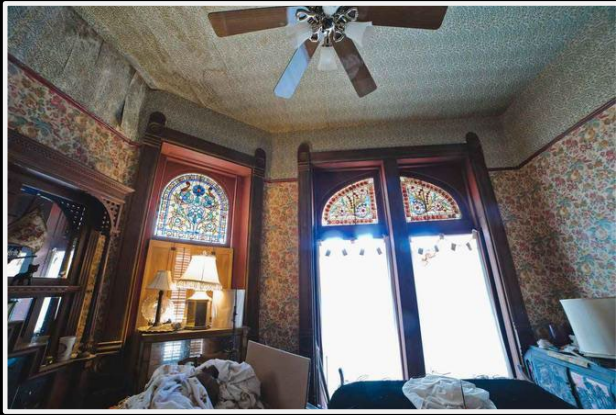


Own a Remarkable
Piece of
Memphis History



LOWENSTEIN MANSION
114
Born in Germany in 1856, Eliza
Lowenstein emigrated to Memphis
in 1854. The firm which she headed
Lowenstein & Bros. Department
Store was prominent in Memphis
for 123 years. A leader in the Jewish
community, she served as president
of Temple Israel for 15 years. She
contributed liberally to rebuilding
the city after the disastrous 1870
yellow fever epidemics.
Rebuilt on original site
1937 - Historic Commission





PROPERTY DETAILS

- 13 Bedrooms | 5 Baths
- Total of 22 Rooms
- 10,611 Square Feet
- .40 Acre Lot
- Wrought Iron Security Fence
- 7 Fireplaces
- 12' Ceilings
- Original Carpentry, Pocket Doors, Light Fixtures and Stained Glass Windows



*Property has been cleared of all furnishings | Vacant
Offered at \$800K

DEMOGRAPHICS

POPULATION

1 MILE	13,832
3 MILES	82,463
5 MILES	151,224

HOUSEHOLDS

1 MILE	7,334
3 MILES	42,639
5 MILES	68,605

AVERAGE INCOME

1 MILE	\$57,753
3 MILES	\$74,387
5 MILES	\$66,547

TOTAL BUSINESSES

1 MILE	4,554
3 MILES	9,626
5 MILES	12,506

TOTAL EMPLOYEES

1 MILE	35,521
3 MILES	80,309
5 MILES	106,206



A Memphis Landmark Ready for Its Next Chapter
756 Jefferson Avenue
The Historic Lowenstein House

The Possibilities Are *Extraordinary*

The Lowenstein House could be reimagined as a:

- **Boutique Hotel or Luxury Inn**
- **Elegant Event Venue**
- **Corporate Headquarters**
- **Professional Office or Executive Retreat**
- **Private Club or Cultural Destination**
- **Historic Bed and Breakfast**
- **Restaurant, Hospitality or Mixed-Use Concept**



