



For Lease

Two Worlds

100 West El Camino Real, Suite 73, Mountain View, CA 94040



**LEASE
RATE**

**\$4.25
SF/MONTH**

OFFERING SUMMARY

**AVAILABLE
SF:** 761 SF

LEASE TYPE Gross

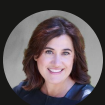
YEAR BUILT: 1981

MARKET: Silicon Valley

SUBMARKET: Mountain View

PROPERTY HIGHLIGHTS

- Highly visible ground-floor corner unit within the Two Worlds mixed-use complex
- 761 SF professional office condominium with efficient, flexible layout
- Large bay windows providing excellent natural light
- Open work area plus private glass-enclosed office
- Ideal for professional services including CPA, real estate, insurance, and similar users
- Prominent El Camino Real location in the heart of Mountain View
- Convenient access to Downtown Mountain View, Castro Street, and major Silicon Valley corridors



Mary Blaser
Vice President
O: 408.309.4049
mary.blaser@svn.com
CalDRE #01053916

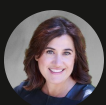




For Lease

Two Worlds

100 West El Camino Real, Suite 73, Mountain View, CA 94040



Mary Blaser
Vice President
O: 408.309.4049
mary.blaser@svn.com
CalDRE #01053916



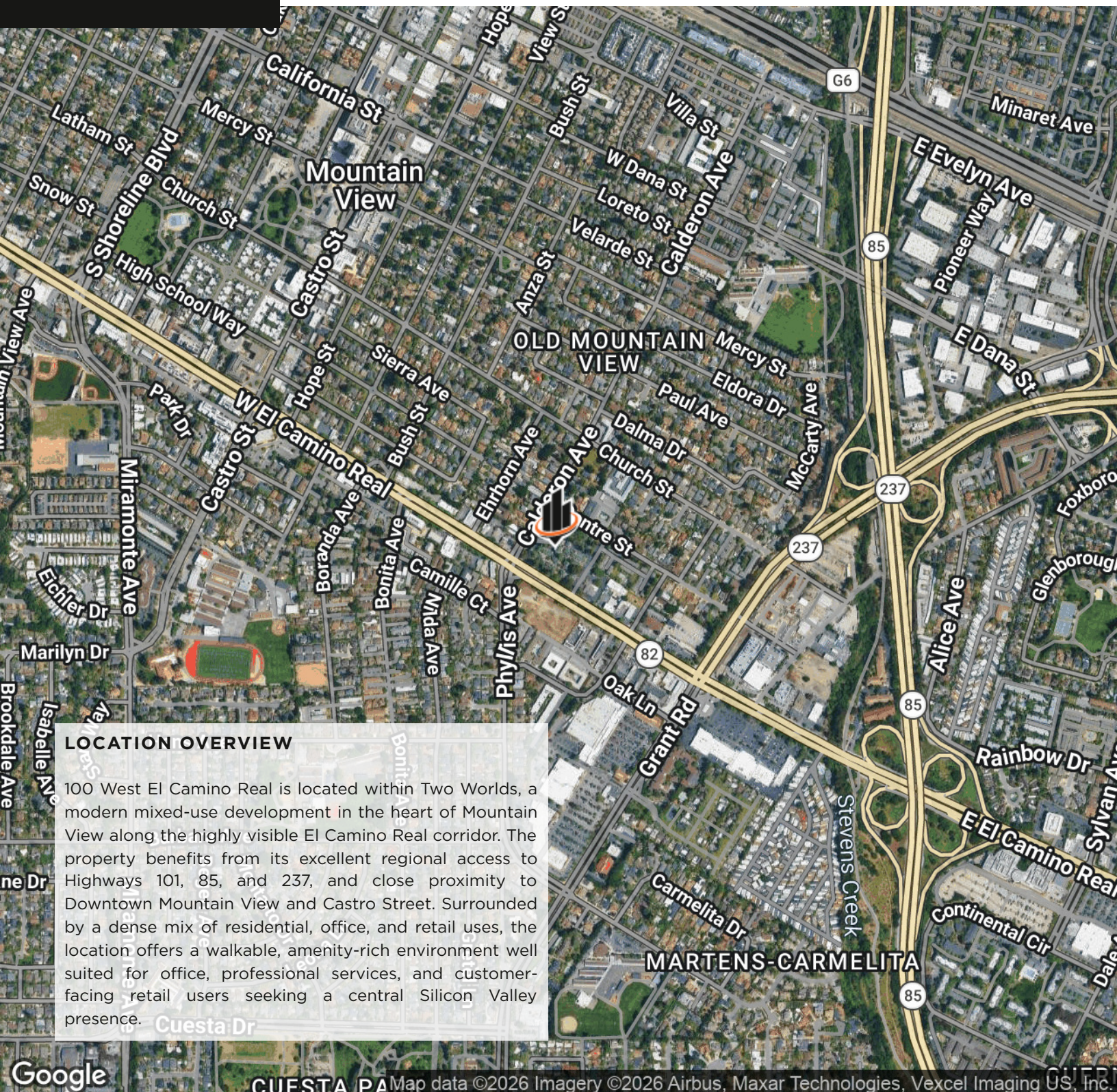
We obtained the information above from sources we believe to be reliable. However, we have not verified its accuracy and make no guarantee, warranty or representation about it. It is submitted subject to the possibility of errors, omissions, change



For Lease

Two Worlds

100 West El Camino Real, Suite 73, Mountain View, CA 94040



LOCATION OVERVIEW

100 West El Camino Real is located within Two Worlds, a modern mixed-use development in the heart of Mountain View along the highly visible El Camino Real corridor. The property benefits from its excellent regional access to Highways 101, 85, and 237, and close proximity to Downtown Mountain View and Castro Street. Surrounded by a dense mix of residential, office, and retail uses, the location offers a walkable, amenity-rich environment well suited for office, professional services, and customer-facing retail users seeking a central Silicon Valley presence.

Mary Blaser
Vice President
O: 408.309.4049
mary.blaser@svn.com
CalDRE #01053916

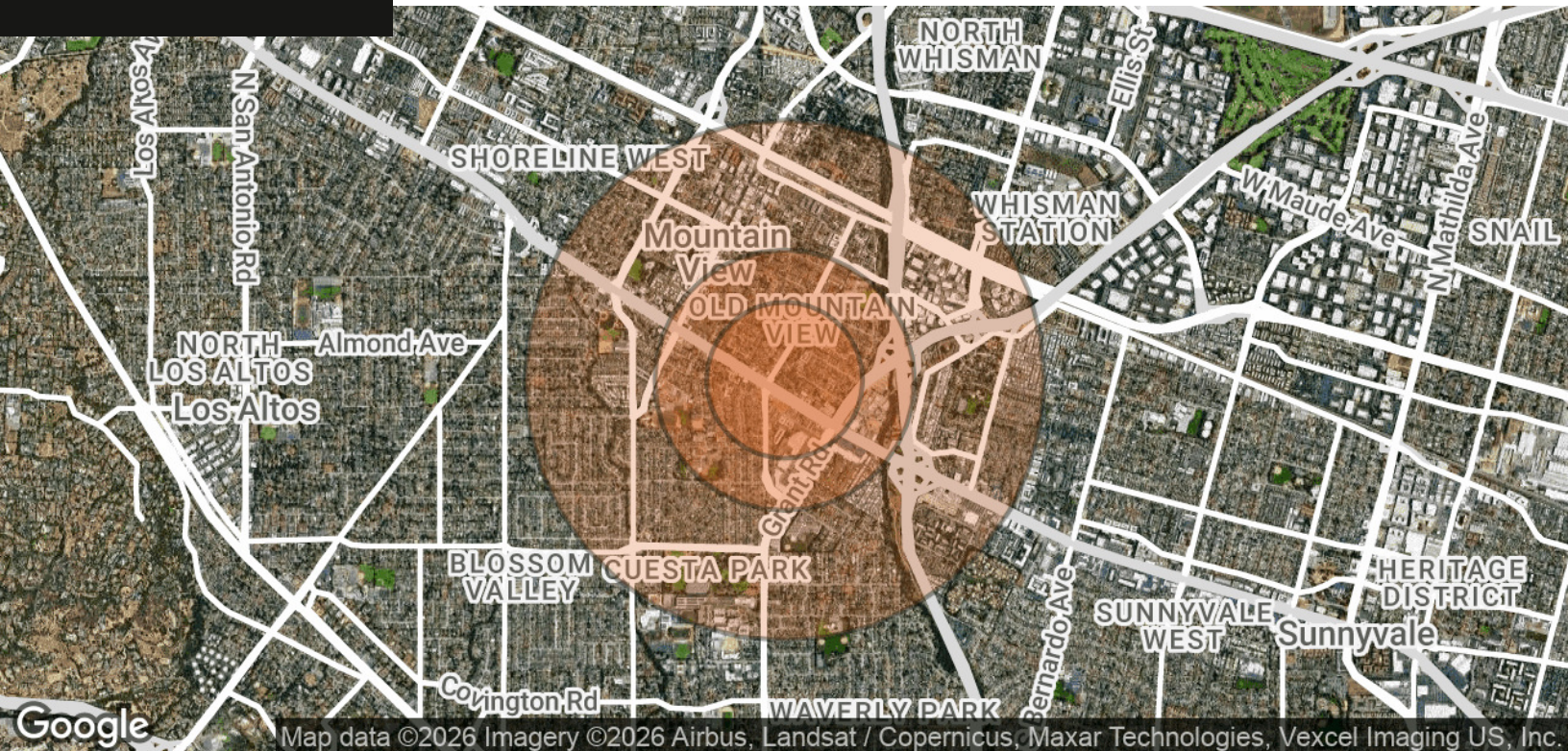




For Lease

Two Worlds

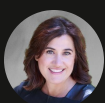
100 West El Camino Real, Suite 73, Mountain View, CA 94040



POPULATION	0.3 MILES	0.5 MILES	1 MILE
TOTAL POPULATION	2,821	6,271	26,018
AVERAGE AGE	40	39	39
AVERAGE AGE (MALE)	39	38	38
AVERAGE AGE (FEMALE)	40	40	40

HOUSEHOLDS & INCOME	0.3 MILES	0.5 MILES	1 MILE
TOTAL HOUSEHOLDS	1,142	2,644	10,680
# OF PERSONS PER HH	2.5	2.4	2.4
AVERAGE HH INCOME	\$259,039	\$263,587	\$267,346
AVERAGE HOUSE VALUE	\$1,970,627	\$1,991,956	\$1,927,211

Demographics data derived from AlphaMap



Mary Blaser
 Vice President
 O: 408.309.4049
 mary.blaser@svn.com
 CalDRE #01053916

