

# PNC

C E N T E R

201 EAST FIFTH STREET  
CINCINNATI, OHIO







# PNC CENTER

## CINCINNATI, OHIO

PNC Center consistently delivering a quality business environment that attracts and retains quality employees and tenants.

\$3M lobby renovation recently completed.

International style architecture that is timeless in its presence and image on the skyline.

Conveniently located at 5th and Main Street in the “heart” of the professional and corporate core of downtown Cincinnati.

The world headquarters of Procter & Gamble Company, Chemed Corporation and Convergys are all within a one block radius of PNC Center.

Fine dining, shopping centers, hotels, The Cincinnati Club, Queen City Club and Fountain Square are all proximately located to the building.

The PNC parking garage, jointly serving the neighboring First Financial Center, accommodates 1,236 vehicles.

Professionally managed on-site by CBRE.

Energy Star designation.





# PROPERTY FEATURES



BUILDING SIZE  
500,357 RSF



27 Floors



Premier 501,024 SF  
Class A+ Office Building



9' Ceilings



Multi-Zone VAV



1 : 1,400 RSF  
Parking Ratio



12 Passenger Elevator



Floors 2 - 10:  
\$13.95 to \$14.95 NNN  
Floors 11 - 16:  
\$14.95 to \$15.95 NNN  
Floors 17 - 22:  
\$15.95 to \$16.95 NNN  
Floors 23 - 27:  
\$16.95 to \$17.95 NNN



OPERATING EXPENSES  
\$11.96 + Electric

## ONSITE AMENITIES

Golf Simulator

Full Service Bank

Fitness Center

2 ATM Machines

Coffee Bar

Conference Center

Professional On-Site  
Management

24-Hour Security  
Personnel







**\$3 MILLION**  
LOBBY RENOVATION

EXPANSIVE  
**TENANT LOUNGE**

**CONFERENCE**  
CENTER

AMENITIZED  
**FIRST FLOOR**  
LOBBY

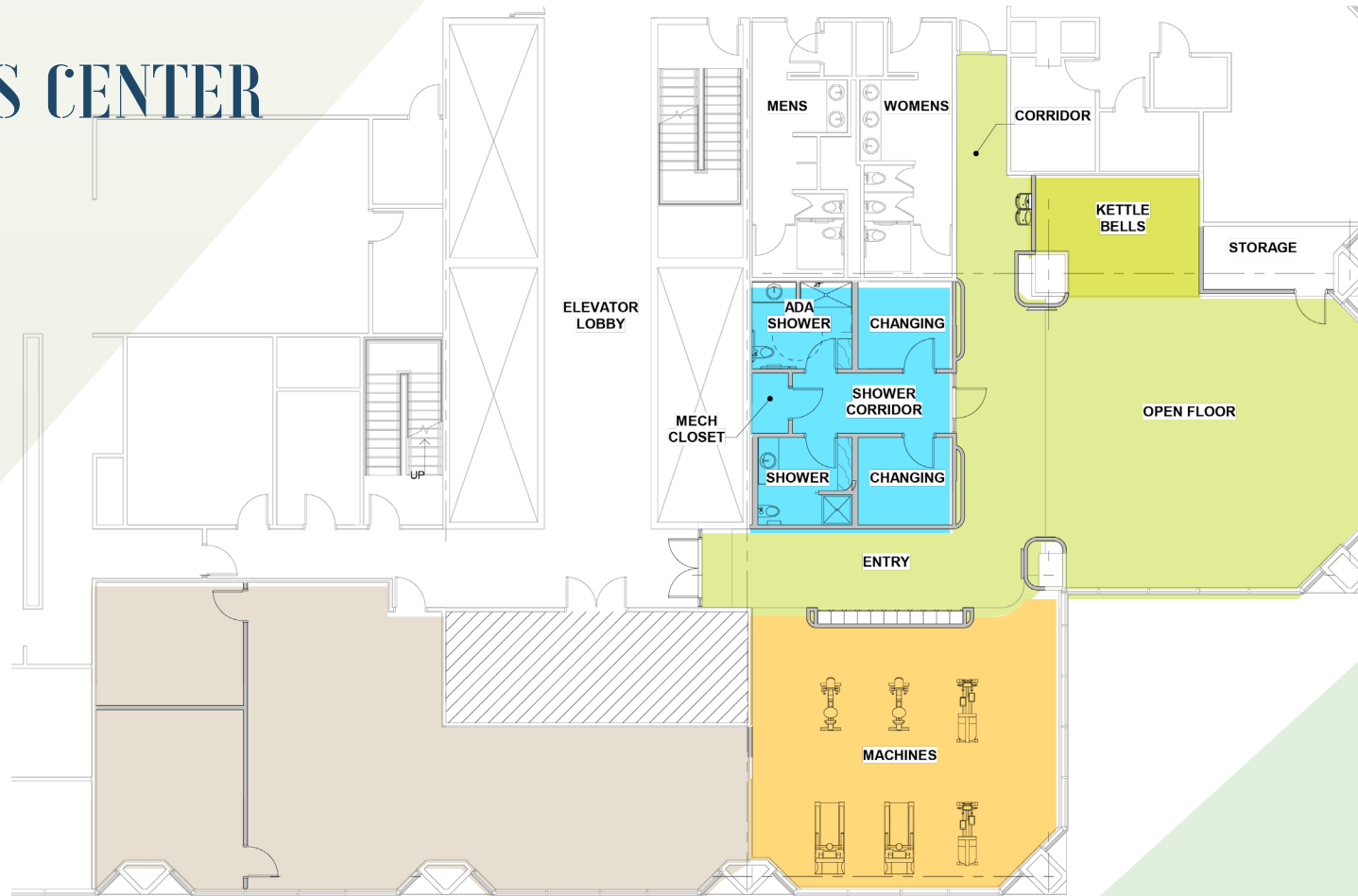
**GOLF**  
STIMULATOR

**FITNESS**  
CENTER





# FITNESS CENTER











PNC  
CENTER



Cincinnati

PNC  
CENTER



# CURRENT AVAILABILITIES

SUITE 2120 / 4,559 SF

SUITE 1820 / 13,962 SF

SUITE 1410 / 4,316 SF

SUITE 1300 / 6,410 SF

SUITE 920 / 3,176 SF

SUITE 710 / 3,990 SF

SUITE 600 / 18,169 SF





# AVAILABILITIES

Suite	SF
2120	4,559
1820	13,962
1410	4,316
1300	6,410
920	3,176
710	3,990
600	18,169





**★ PNC Center Garage**  
 201 E Fifth St  
 Total Spaces: 1,266  
 513-381-6840

**1 Keenes Olympic Garage**  
 120 E 7th St  
 Total Spaces: 400  
 859-486-7220

**2 URS Garage**  
 36 E 7th St  
 Total Spaces: 743  
 513-381-0767

**3 Fountain Square North**  
 Under Fountain Square  
 Total Spaces: 604  
 513-621-4400

**4 Fountain Square South**  
 SP Parking  
 416 Vine St  
 Total Spaces: 408  
 513-381-3648

**5 Laz Enterprises (Lot# 1644)**  
 3rd and Main  
 Total Spaces: 200  
 513-381-0767

**6 8th and Sycamore Garage**  
 315 E 7th St  
 Total Spaces: 500  
 513-621-4400

**7 ABM Parking Services**  
 (Lot #1636)  
 230 E 7th St  
 Total Spaces: 239  
 513-929-9200

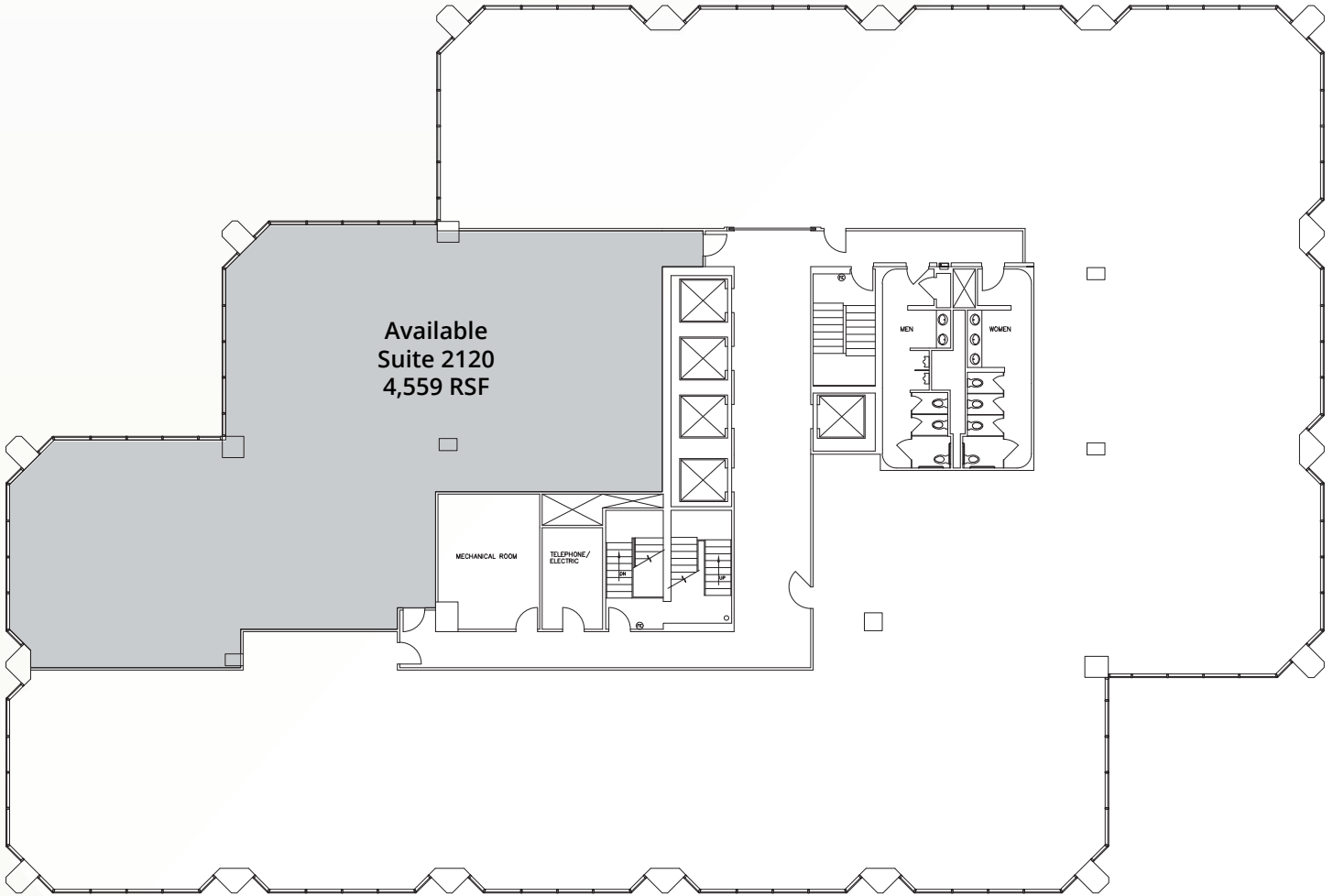
**8 The Banks Garage**  
 99 E 2nd St  
 Total Spaces: 4,097  
 513-946-8102

**9 East Garage**  
 443 E Pete Rose Way  
 Total Spaces: 1,185  
 513-946-8102

**10 Queen City Square Garage**  
 340 Sycamore St.  
 Total Spaces: 2,291  
 513-361-4019



# 21ST FLOOR

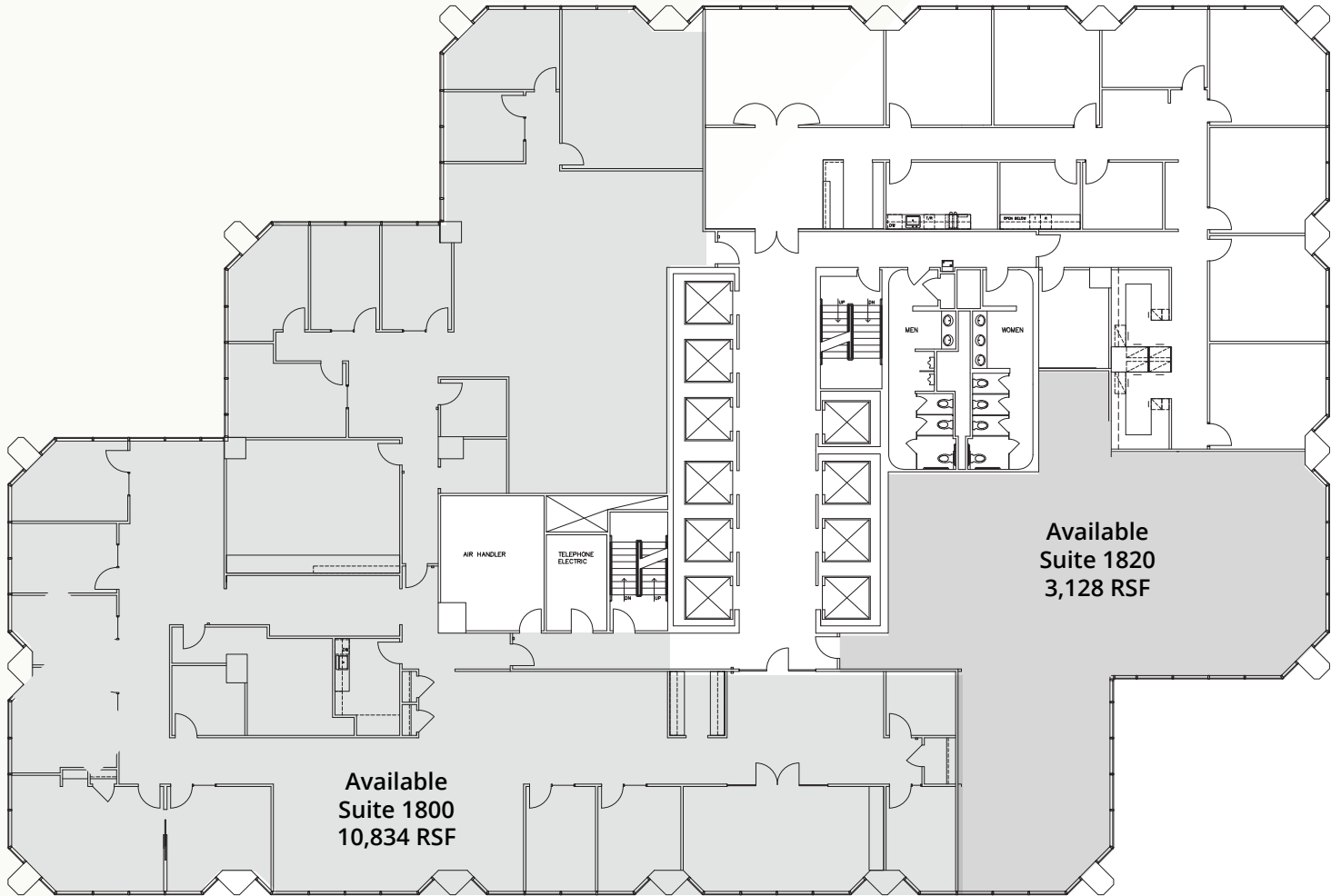


- Occupied
- Available



# 18TH FLOOR

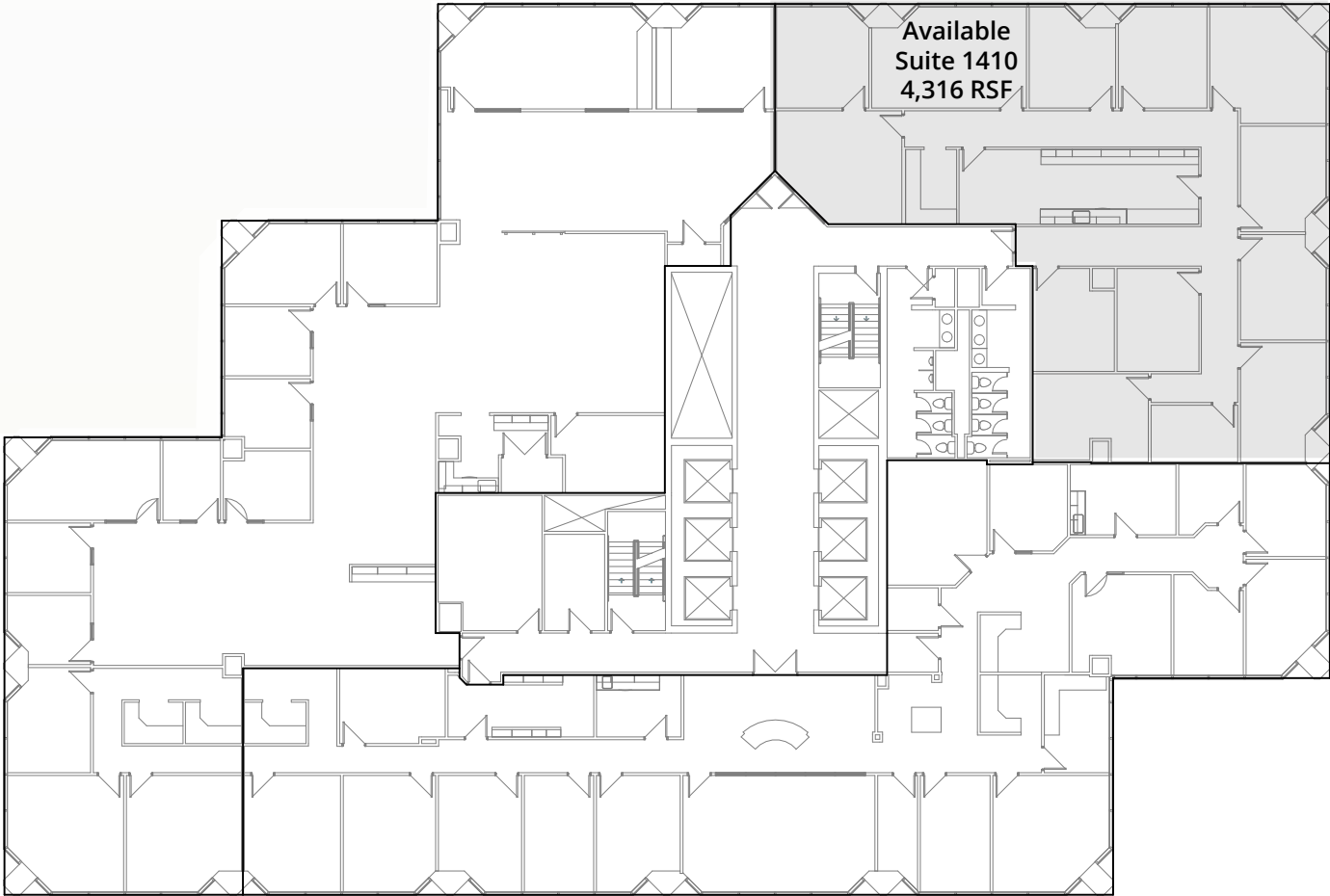
(UP TO 13,962 RSF CONTIGUOUS)



- Occupied
- Available



# 14TH FLOOR

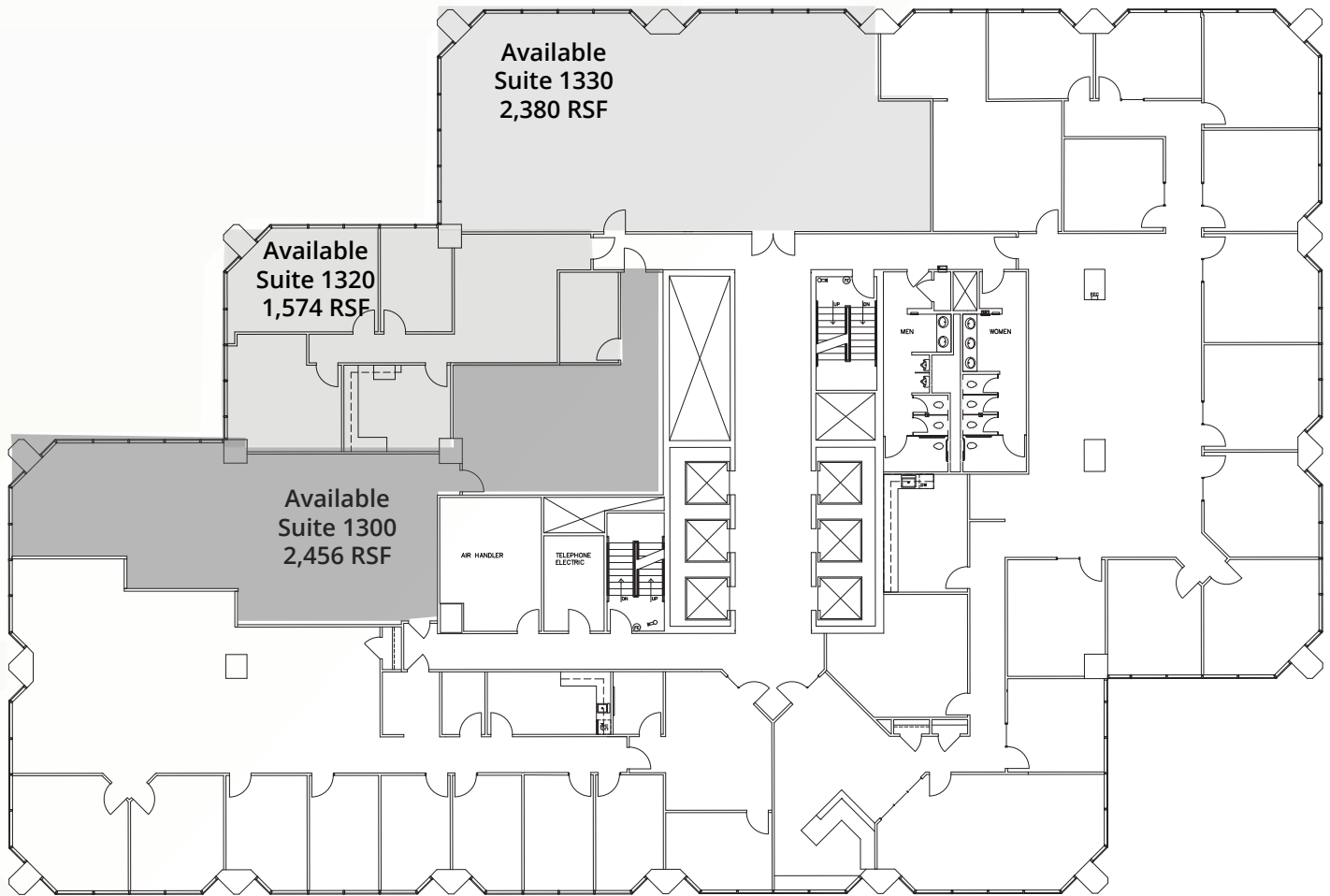


□ Occupied  
■ Available



# 13TH FLOOR

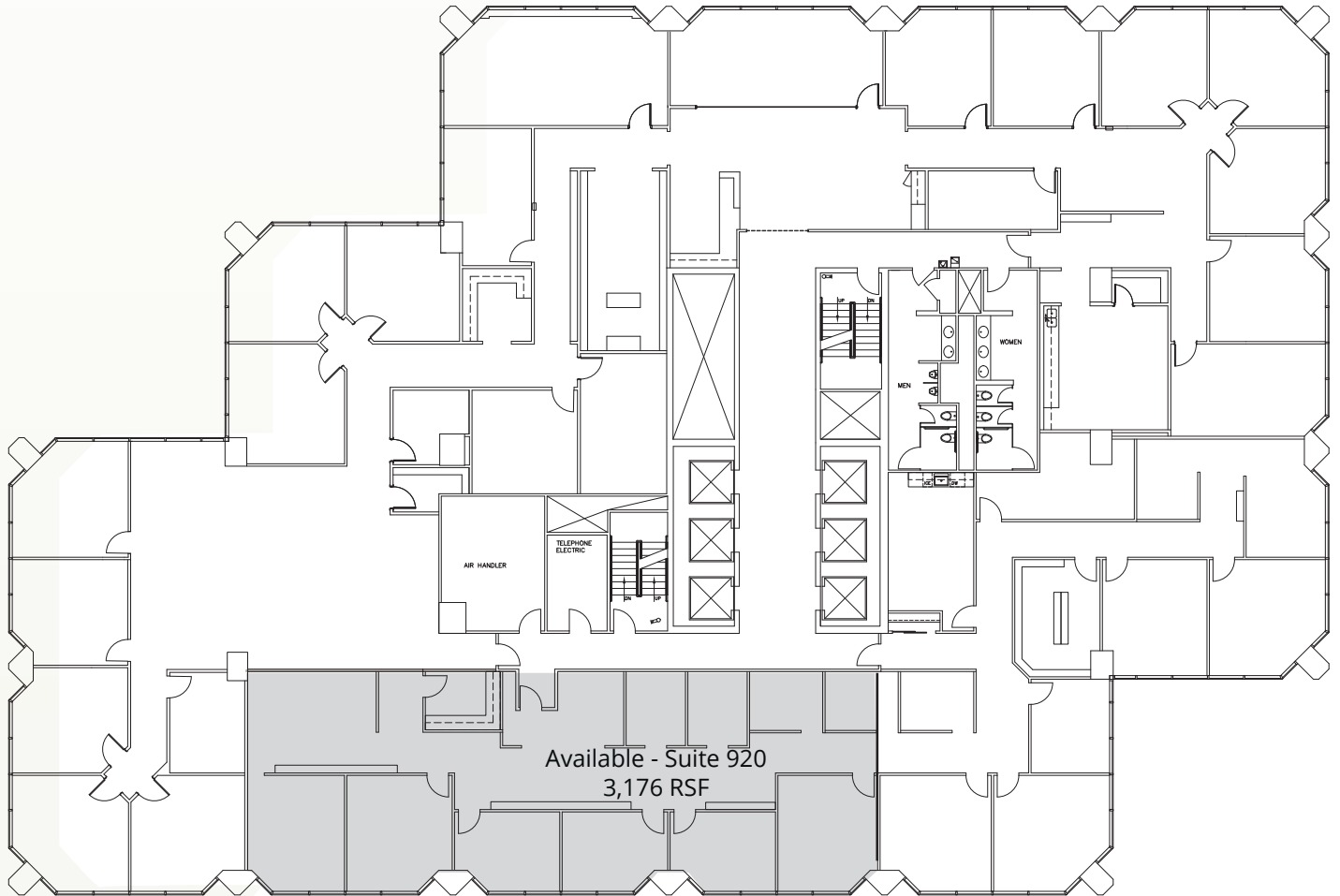
(UP TO 6,410 RSF CONTIGUOUS)



- Occupied
- Available



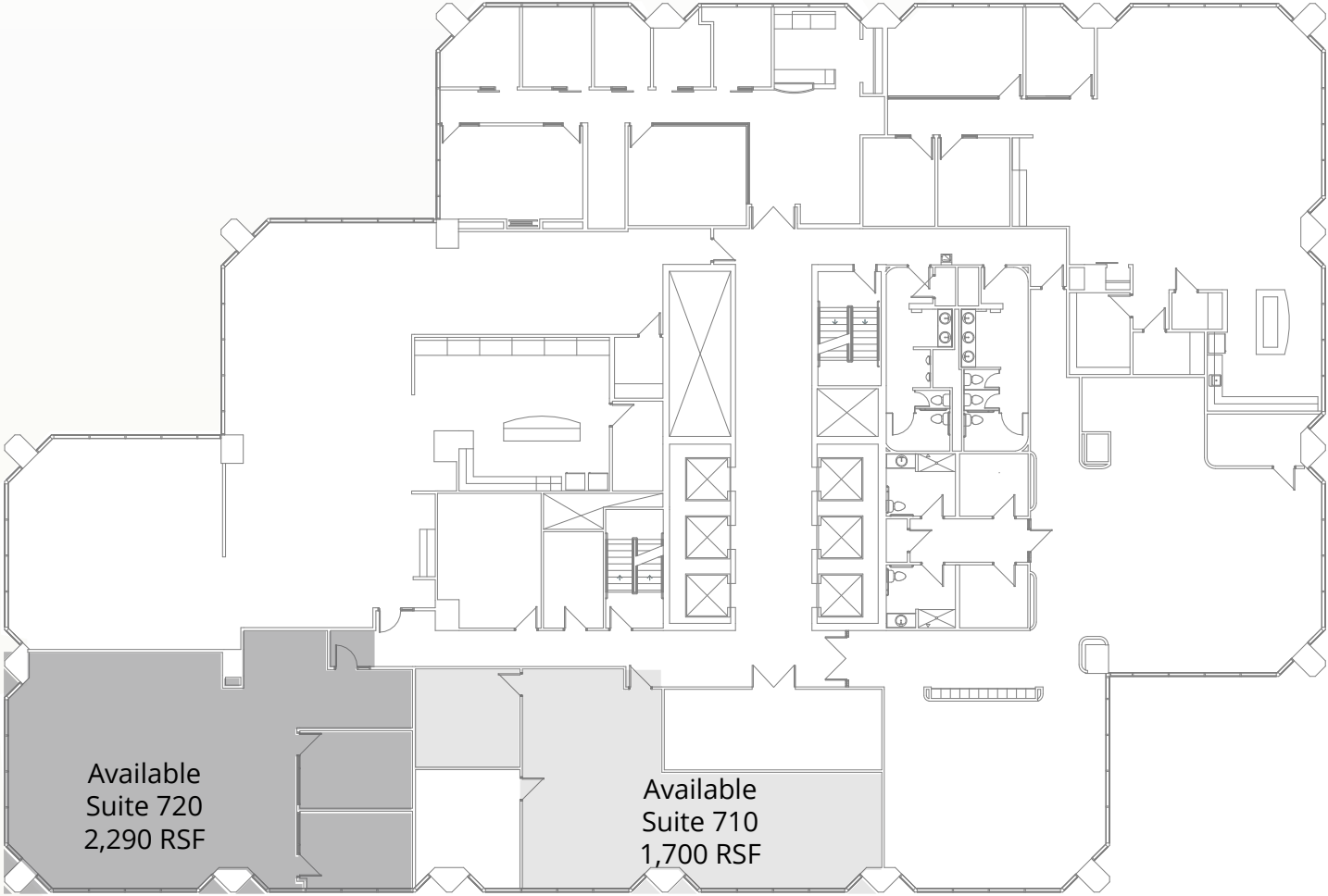
# 9TH FLOOR



- Occupied
- Available



# 7TH FLOOR



Available  
Suite 720  
2,290 RSF

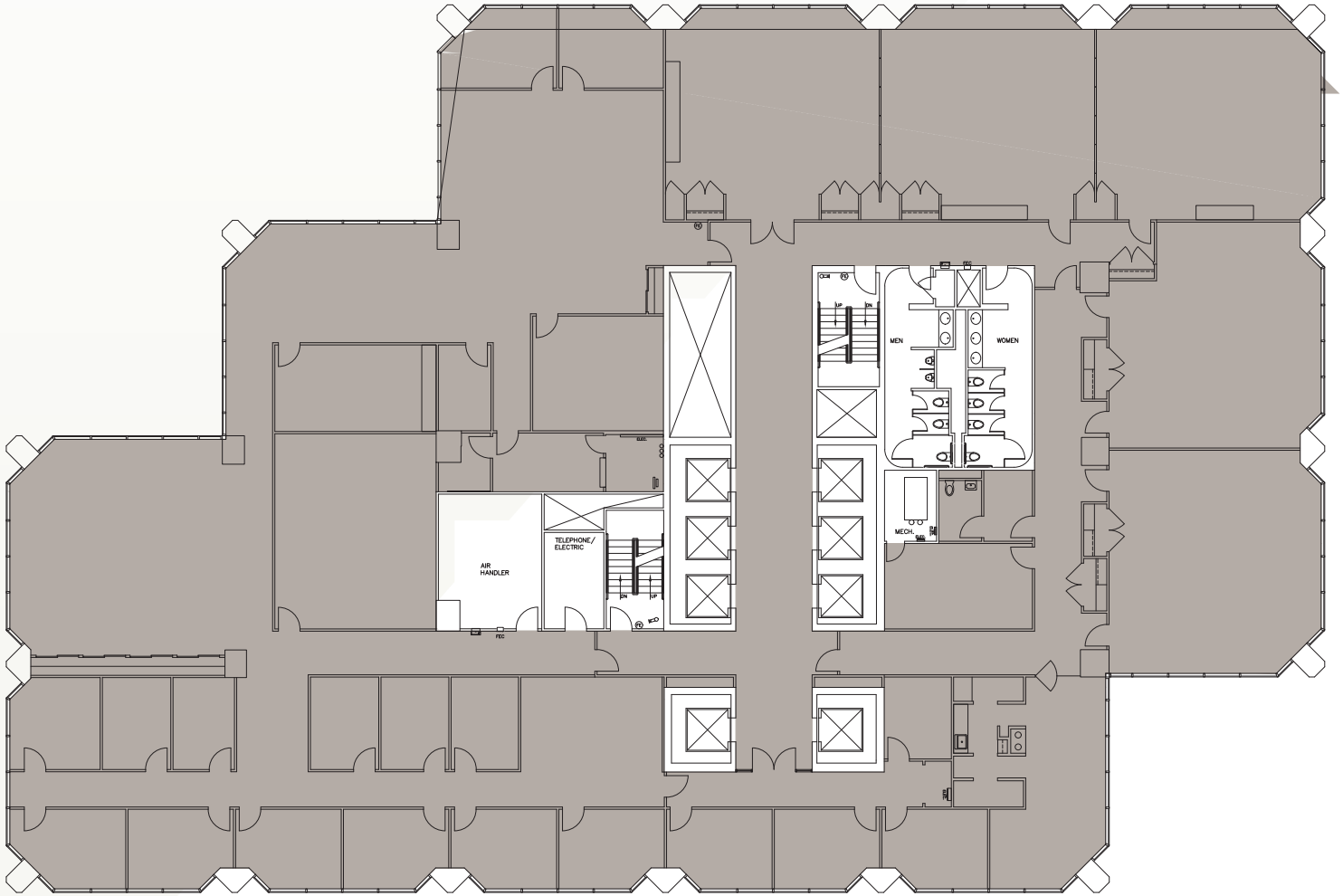
Available  
Suite 710  
1,700 RSF

- Occupied
- Available

# 6TH FLOOR

FULL FLOOR AVAILABLE

18,169 RSF



- Occupied
- Available



# PNC

## CENTER

For leasing information, please contact:

**TRAVIS LIKES**

First Vice President  
+1 513 369 1364  
travis.likes@cbre.com

**JOHN ECKERT**

Senior Vice President  
+1 513 369 1321  
john.eckert@cbre.com

**CBRE**

201 East Fifth Street  
Suite 2200  
Cincinnati, Ohio 45202

[www.cbre.com/pnccenter](http://www.cbre.com/pnccenter)



©2021 CBRE, Inc. All rights reserved. This information has been obtained from sources believed reliable, but has not been verified for accuracy or completeness. You should conduct a careful, independent investigation of the property and verify all information. Any reliance on this information is solely at your own risk. CBRE and the CBRE logo are service marks of CBRE, Inc. All other marks displayed on this document are the property of their respective owners, and the use of such logos does not imply any affiliation with or endorsement of CBRE. Photos herein are the property of their respective owners. Use of these images without the express written consent of the owner is prohibited. PMStudio\_Jan2021