

Industrial ★ SALE

LanCarteCRE.com

328 THOMAS PL EVERMAN, TX 76140

10,000 SF ON 1.92 AC



LANCARTE
COMMERCIAL

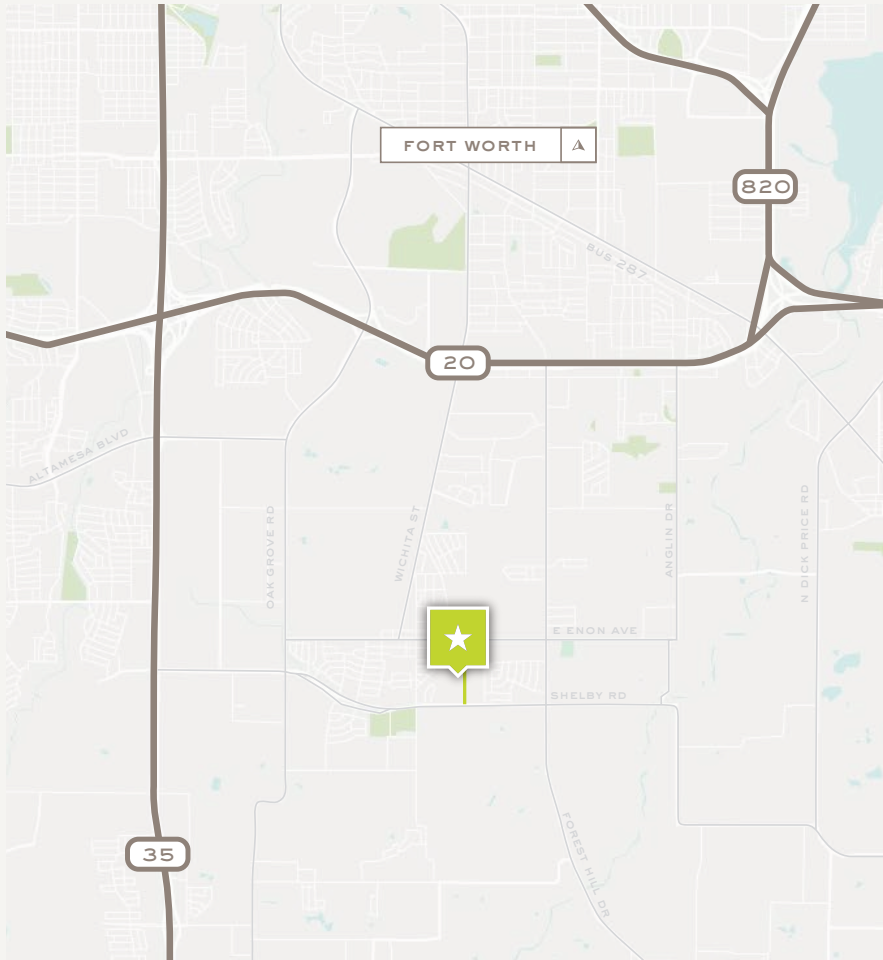
Daniel Shelley
512-461-5363
dshelley@lancartecre.com

Riley Dow
817-681-2022
rdow@lancartecre.com

Industrial ★ SALE

328 THOMAS PL

LanCarteCRE.com



PROPERTY FEATURES

- 10,000 SF
 - 1,200 SF of Office
- 1.92 AC
- Three 20' x 14' Grade Level Doors
- One 20' x 14' Dock High Door
- 3 Phase 800 Amp Power
- Large, sprinklered, paint booth
- 14'-22.5' Clear Height
- Zoning: LI - Light Industrial
- Paint Booth (23'L x 13.6"W x 9'H)

LOCATION OVERVIEW

This property is strategically located near I-35W and I-20, offering prime access to the Dallas-Fort Worth metroplex. The area is known for its industrial growth, making it a prime spot for distribution, manufacturing, or logistics operations. Additionally, the property's location within Everman ensures proximity to a skilled workforce and local amenities.

SALE PRICE

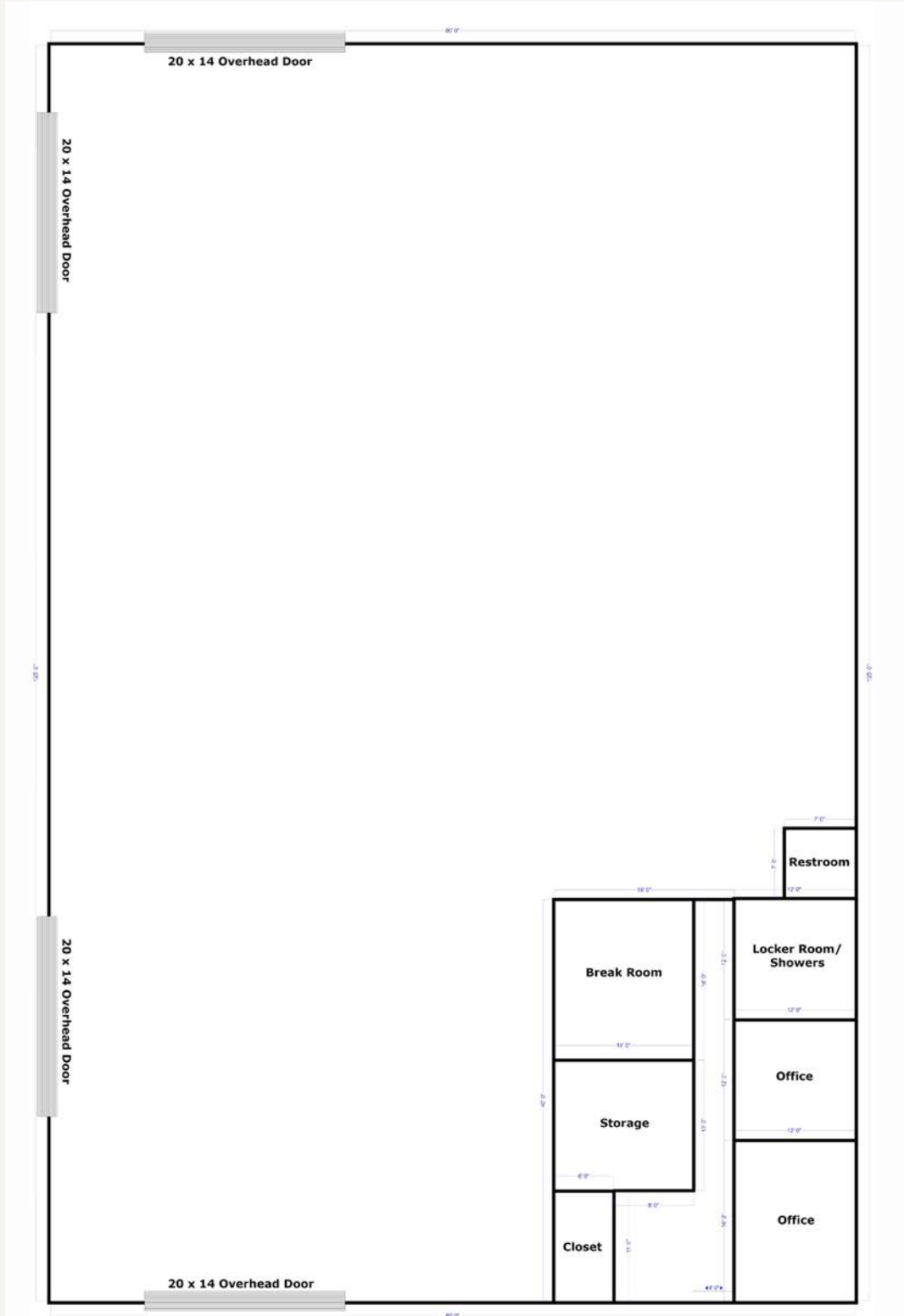
Contact Broker

Industrial ★ SALE

328 THOMAS PL

LanCarteCRE.com

FLOOR PLAN



Industrial ★ SALE

328 THOMAS PL

LanCarteCRE.com

EXTERIOR PHOTOS



Industrial ★ SALE

328 THOMAS PL

LanCarteCRE.com

INTERIOR PHOTOS





LANCARTE
COMMERCIAL

Relentlessly Pursuing What Matters

Daniel Shelley

512-461-5363 | dshelley@lancartecre.com

Riley Dow

817-681-2022 | rdow@lancartecre.com