

Property Summary | Historic Whitehorse Tavern



PROPERTY DESCRIPTION

Step into a piece of living history at this distinguished two acre property in Malvern. Dating back to the era of Thomas Jefferson's stay in September 1776, and later serving as a gathering place for the Free Masons from 1790 to 1806, this building exudes an undeniable sense of timeless grandeur. The echoes of the past resonate throughout the meticulously preserved architecture, creating a truly unique atmosphere that seamlessly blends historic charm with modern functionality. From the moment you and your colleagues enter the hallowed halls, you'll be enveloped in the rich heritage of this storied address, offering a one-of-a-kind leasing opportunity for businesses seeking a space steeped in history and prestige.

PROPERTY HIGHLIGHTS

- Nine versatile rooms for private offices, cubicles, and conference space
- Complete modern kitchen for convenience and hospitality
- Two well-appointed restrooms
- Private sunroom and deck for relaxation and inspiration
- Central heating and air conditioning for year-round comfort

FRANK ENGLUND

Founding Partner
610.505.8493
fenglund@firstlibertypartners.com

Information concerning this offering is from sources deemed reliable, but no warranty is made as to the accuracy thereof and is submitted subject to errors, omissions, change of prices or other conditions, prior sale or lease or withdrawal without notice.

OFFERING SUMMARY

Lease Rate:	Negotiable
Available SF:	4,250 SF
Building Size:	4,250 SF

DEMOGRAPHICS	0.3 MILES	0.5 MILES	1 MILE
Total Households	112	333	1,327
Total Population	312	947	4,075
Average HH Income	\$176,882	\$180,550	\$185,237



Interior Photos | Open and Spacious Rooms



FRANK ENGLUND

Founding Partner
610.505.8493
fenglund@firstlibertypartners.com

Information concerning this offering is from sources deemed reliable, but no warranty is made as to the accuracy thereof and is submitted subject to errors, omissions, change of prices or other conditions, prior sale or lease or withdrawal without notice.



Additional Photo | Your Office or Conference Room?



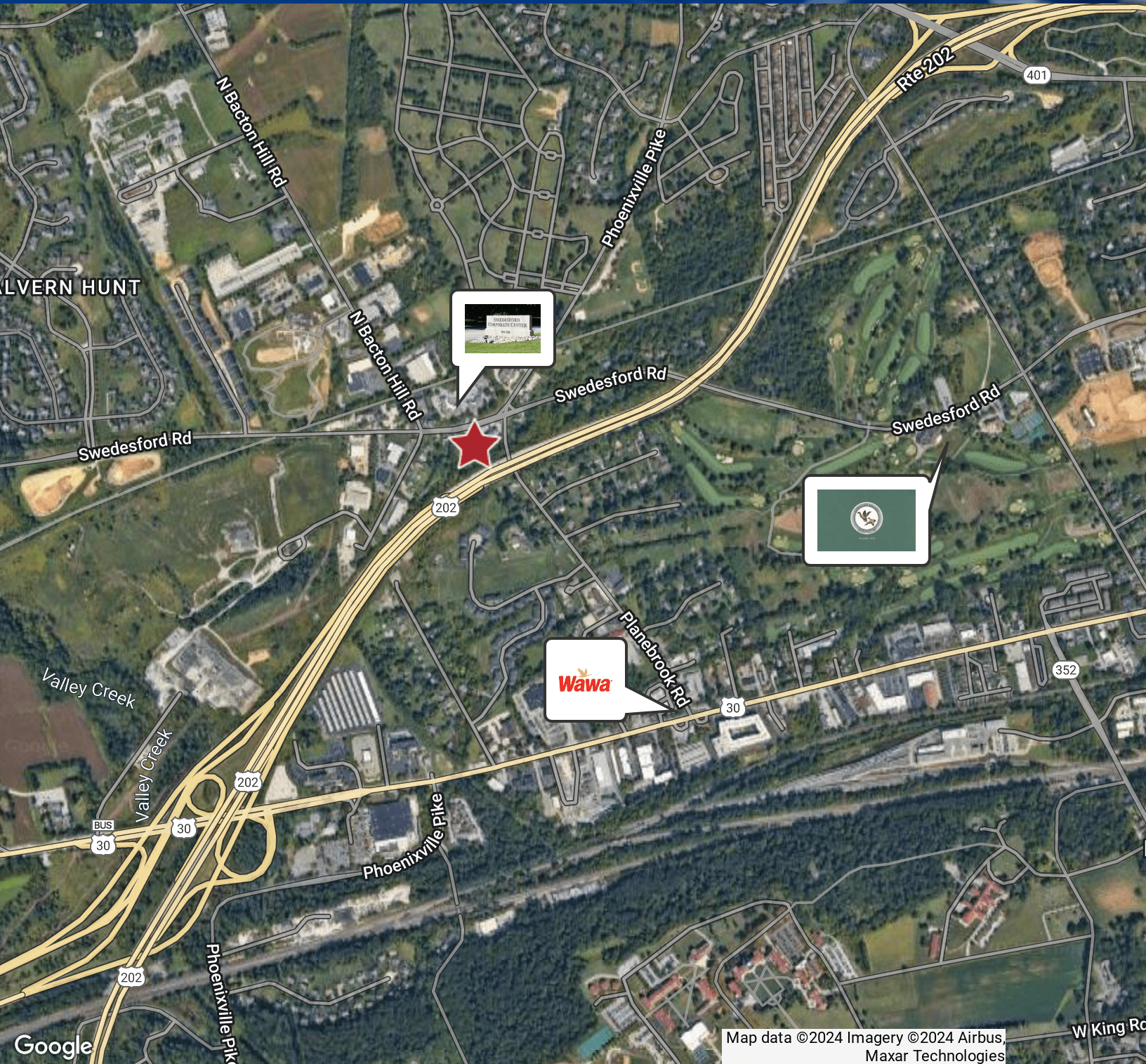
FRANK ENGLUND

Founding Partner
610.505.8493
fenglund@firstlibertypartners.com

Information concerning this offering is from sources deemed reliable, but no warranty is made as to the accuracy thereof and is submitted subject to errors, omissions, change of prices or other conditions, prior sale or lease or withdrawal without notice.



Location Map



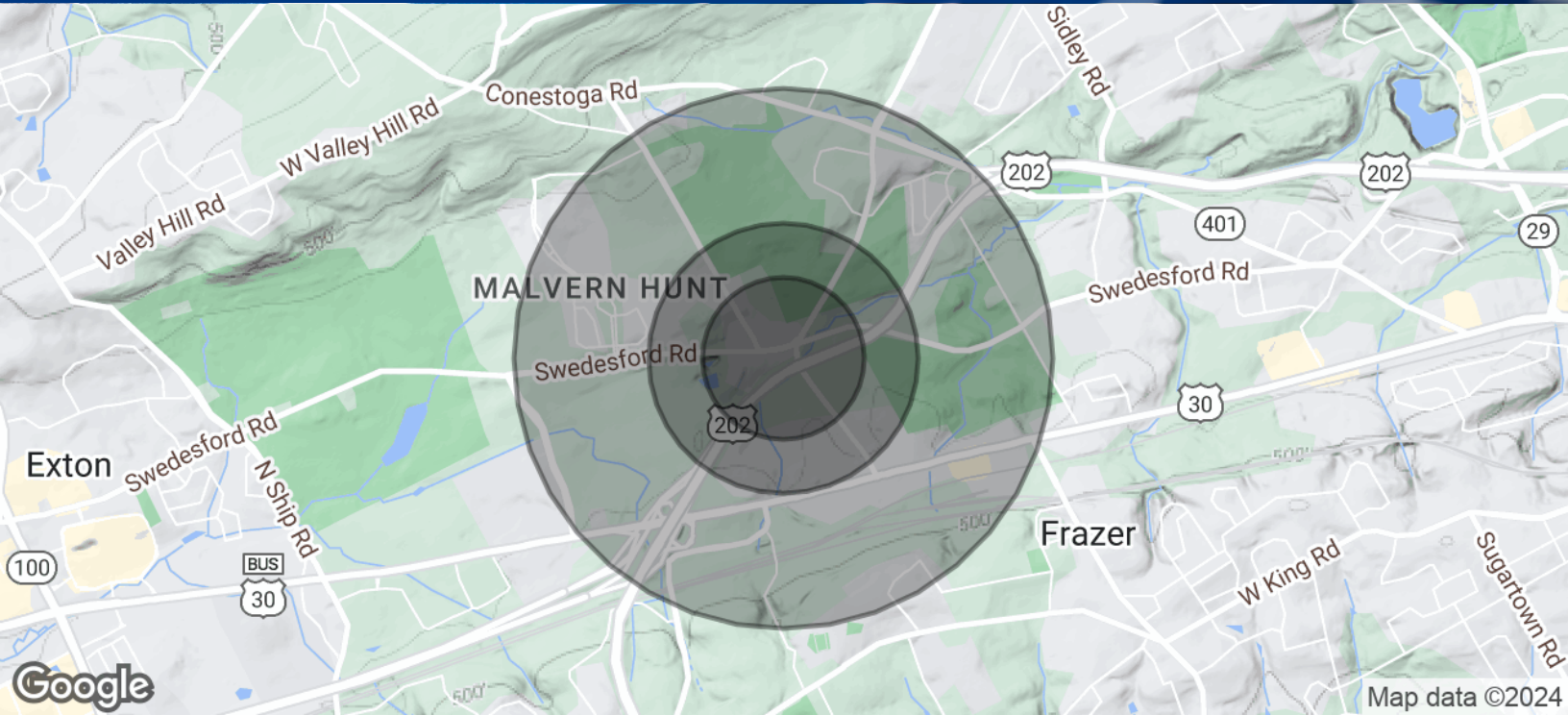
FRANK ENGLUND

Founding Partner
610.505.8493
fenglund@firstlibertypartners.com

Information concerning this offering is from sources deemed reliable, but no warranty is made as to the accuracy thereof and is submitted subject to errors, omissions, change of prices or other conditions, prior sale or lease or withdrawal without notice.



Demographics Map & Report



POPULATION

	0.3 MILES	0.5 MILES	1 MILE
Total Population	312	947	4,075
Average Age	36	36	38
Average Age (Male)	36	36	36
Average Age (Female)	36	36	38

HOUSEHOLDS & INCOME

	0.3 MILES	0.5 MILES	1 MILE
Total Households	112	333	1,327
# of Persons per HH	2.8	2.8	3.1
Average HH Income	\$176,882	\$180,550	\$185,237
Average House Value	\$586,924	\$590,885	\$600,528

Demographics data derived from AlphaMap

FRANK ENGLUND

Founding Partner
610.505.8493
fenglund@firstlibertypartners.com



Information concerning this offering is from sources deemed reliable, but no warranty is made as to the accuracy thereof and is submitted subject to errors, omissions, change of prices or other conditions, prior sale or lease or withdrawal without notice.