

**3576**

**CONCORD ROAD**

**YORK, PENNSYLVANIA**

**FOR LEASE**

Office/Medical



**4,970** SF

AVAILABLE

**KINSLEY**  
PROPERTIES

**Contact:**

Dan Hawks  
(717)-741-8707

[dhawks@kinsleyproperties.com](mailto:dhawks@kinsleyproperties.com)

Joe Caughy  
(717)-741-8365

[jcaughy@kinsleyproperties.com](mailto:jcaughy@kinsleyproperties.com)

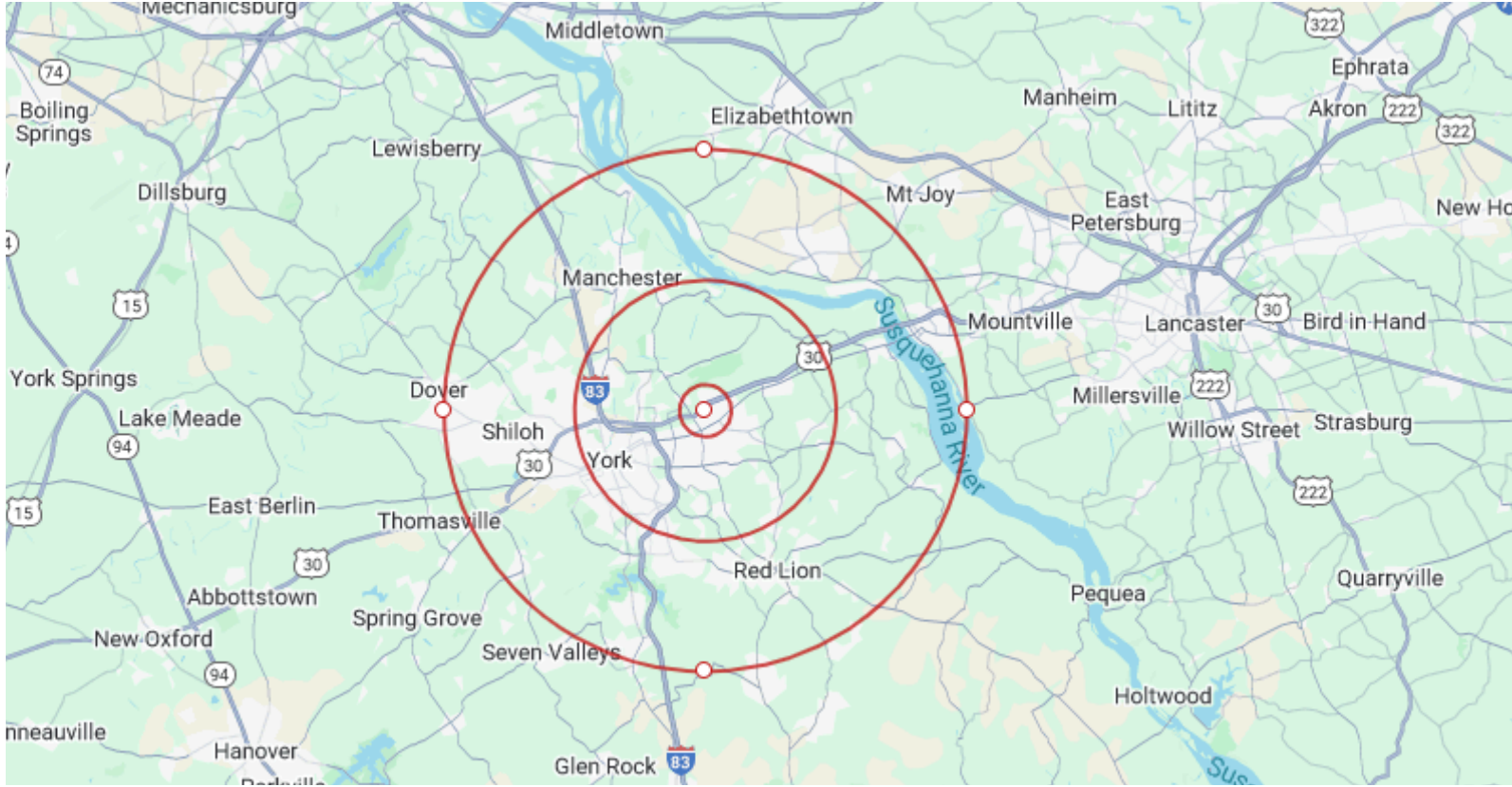


4,970 SF  
AVAILABLE



### Building Specifications:

Township	Springettsbury	Restrooms	In Suite
Zoning	G-I General Industrial	Car Parking	On site
Tenancy	Multiple	Fire Protection	Wet
Land Area	3.7 Acres	HVAC	Yes
Building Area	51,090 SF	Stories	1
Signage	Yes	Elevators	No



### Distances to Cities:

York, PA	5 miles	14 min
Harrisburg, PA	28 miles	39 min
Baltimore, MD	56 miles	1 hr
Philadelphia, PA	99 miles	2 hrs

### Labor Statistics:

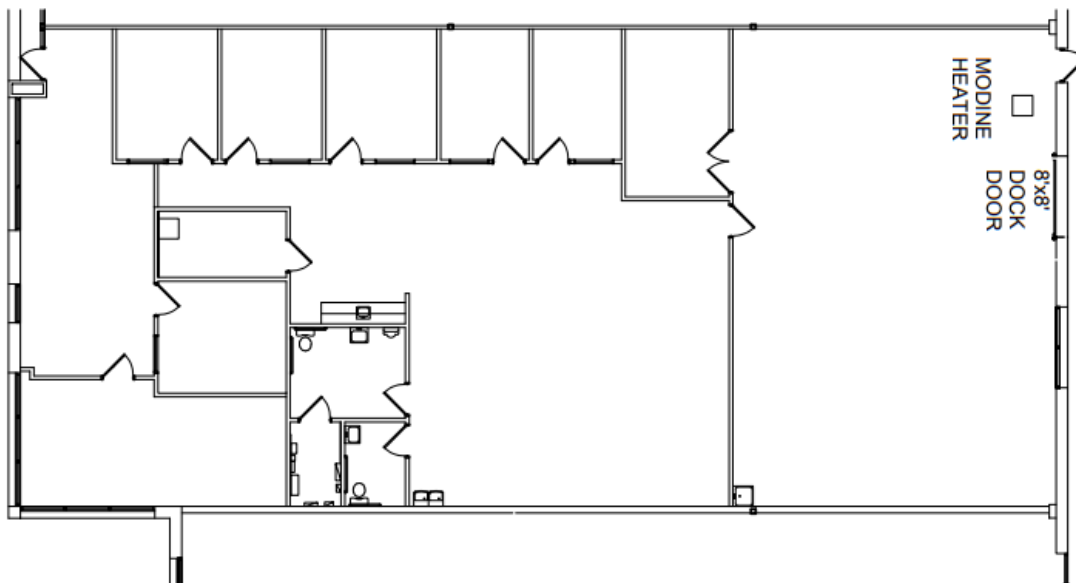
#### 1 Mile:

#### 5 Miles:

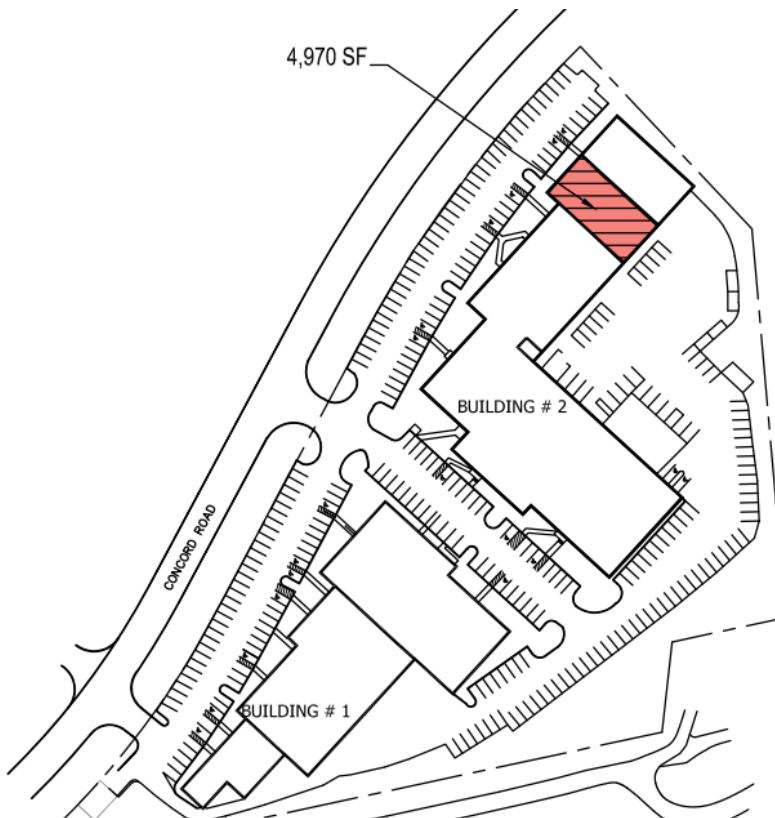
#### 10 Miles:

Total Population	7,347	64,841	127,044
Labor Population	18,113	68,122	126,513
Median Household Income	61,185	62,693	69,392

**MEADOWLANDS BUILDING #2  
(3576 CONCORD ROAD YORK, PA 17402)  
4,970 SF - FLOOR PLAN  
"B" BUSINESS**



**MEADOWLANDS BUILDING #2  
(3576 CONCORD ROAD - SUITE, YORK, PA 17402)  
4,970 SF - SITE PLAN**





# **KINSLEY** PROPERTIES

## **About Kinsley Properties**

Kinsley Properties is a privately held real estate development and management company. We develop new projects from the ground up and also acquire existing properties to hold long-term in our real estate investment portfolio. We develop and acquire different types of real estate in partnership with others or to be wholly owned. We have the capability, resources, and staff in order to facilitate and guide our clients through a successful real estate process. We work together with our clients in order to complete the entire real estate process from the beginning to the end. Starting from acquisition to development and design, construction, leasing, and asset management, we take pride in our product and work to provide all of these services in connection with the properties that are held in our portfolio. We have over 50 years of experience developing and managing a diverse portfolio of various property types across the mid-Atlantic region. We have a goal to provide solutions and high-quality customer service in order to ensure the success and growth of our clients, tenants, and partners. We believe in long-term relationships, collaboration, and teamwork because we are all in this together and we want to do what we can to ensure the entire team's success.

### **Mission:**

**WE PROVIDE REAL ESTATE SOLUTIONS THAT CREATE LASTING RELATIONSHIPS AND CLIENT SUCCESS.**

### **Vision:**

**BE THE MOST RESOURCEFUL REAL ESTATE EXPERT.**

### **Values:**

**OUR REPUTATION IS BUILT ON INTEGRITY.  
WE DEVELOP PEOPLE.  
WE'RE IN IT WITH YOU.  
SHARED SUCCESS.  
ALWAYS BE RESPONSIBLE.**



**DAN HAWKS**

Director of Leasing  
dhawks@kinsleyproperties.com  
717-741-8707



**JOE CAUGHY**

**ADDRESS:**  
6259 Reynolds Mill Road  
Seven Valleys, PA 17360

Leasing & Marketing Associate  
jcaughy@kinsleyproperties.com  
717-741-8365