

# Downtown Miami

1731 N Miami Ave  
Miami, Florida 33136

FOR LEASE

## PRIME COMMERCIAL PROPERTY





# PROPERTY OVERVIEW

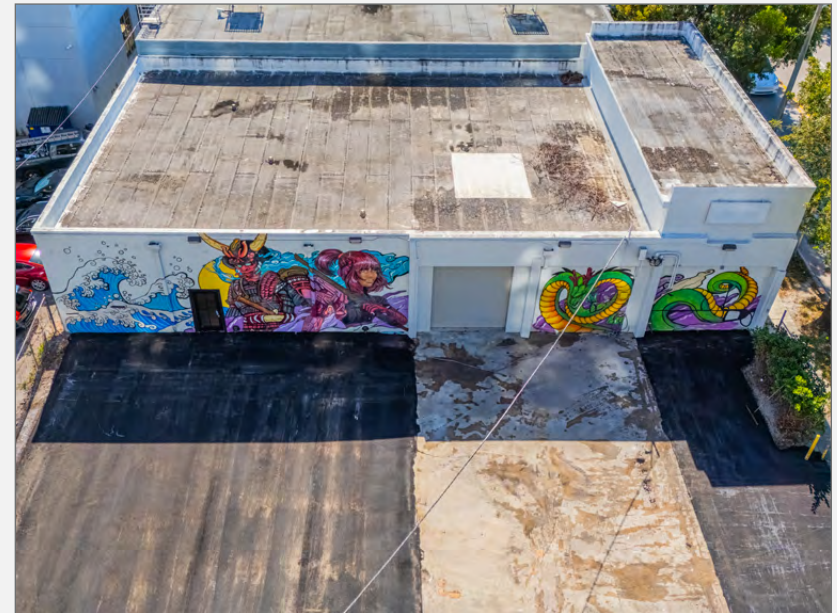
1731 N Miami Ave, Miami, FL 33136 is a **prime** commercial property in Downtown Miami, offering 4,500 square feet of commercial space with a street-level entrance. This space offers **excellent visibility** and **accessibility** in a vibrant urban environment, complemented by a **diverse population** that provides a rich customer base for businesses. The property benefits from **excellent transportation** links, including nearby Metrobus routes, Metrorail, and Metromover stations, as well as proximity to the I-95. Situated in a dynamic part of **Downtown Miami**, the property is surrounded by a mix of commercial and residential developments, government offices, and cultural attractions.

The area has experienced **significant growth**, with Downtown Miami seeing more than a 40% population increase since Covid. This growth, coupled with ongoing high-rise construction in nearby neighborhoods and **increasing demand** for office and retail space in the urban core, presents **substantial potential** for businesses establishing a presence in this location. The property's central position in Miami's thriving downtown district offers strong potential for foot traffic, accessibility, and exposure to a diverse and growing urban population.

## Property Highlights

- Brand New Renovation
- Low Ceiling: 12' 8" +/-
- High Ceiling: 18' 3" +/-
- Additional Street Parking
- Convenient street-level access for customers and clients
- Within Omni CRA

***\*The Omni CRA may provide Business Improvement Grants to help businesses complete buildouts and expansions.***





# EXECUTIVE SUMMARY



AVAILABLE SPACE:

**4,500 SF ±**



LEASING RATE:

**\$45 /SF NNN**



PARKING:

**On-site + street**



AVAILABILITY:

**Move-in ready**



## Area Highlights

- Situated in the heart of Downtown Miami, offering easy access to **Wynwood, Edgewater & Brickell**
- Close proximity to major public transportation routes, I-395, I-95 and Biscayne Blvd
- Demographics reflect an Average Annual Household Income: **+/- \$97,364**
- Near art galleries, theaters, and museums that enrich the local cultural landscape

Information herein from sources believed reliable but not verified. Chariff Realty Group recognizes cooperating brokers only with prior written disclosure of exclusive representation and written acknowledgment by Chariff. No retroactive registrations. Full terms: [chariff.com/privacypolicy/](https://www.chariff.com/privacypolicy/).

**www.chariff.com**  
**(305) 576-7474**



# FRONT ENTRANCE





# INDOOR





# INDOOR





# ROLL UP DOOR ENTRANCE



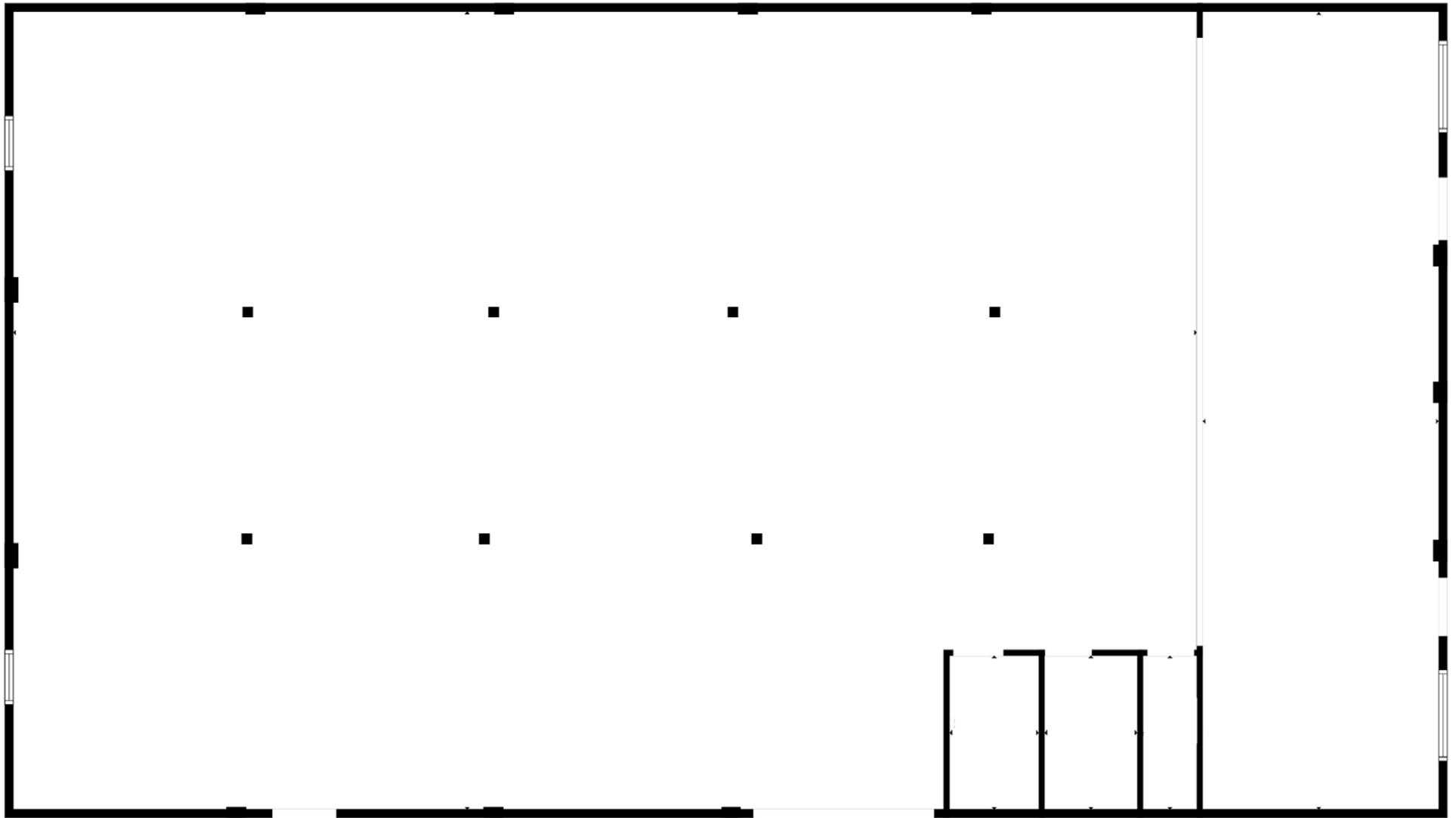


# BATHROOM (SPACE COMES WITH 2 BATHROOMS)





# FLOORPLAN





# EXTERIOR PARKING LOT





# AERIAL VIEW (South to North View)



ASTRA

WYNWOOD  
PADEL CLUB

THE  
HIGHLEY  
HOUSE

STRATA  
WYNWOOD

NE 20TH ST

N MIAMI AVE

PARC  
LOFTS





# AERIAL VIEW (S.W. to N.E. View)



**MISSONI**baia  
MIAMI RESIDENCES

COFFEE. BAKERY. KITCHEN

WYNWOOD  
HAUS

FILLING  
STATIONS

ARC

**N MIAMI AVE**



# AERIAL VIEW (West to East View)



**CANVAS**

**NE 2ND AVE**

**VICE CITY BEAN**

**& AMPERSAND STUDIOS**

**ELEV8TION FITNESS**

**N MIAMI AVE**



# AERIAL VIEW (N.W. to S.E. View)



**UNI**



**MIAMI  
WORLD CENTER**



**N MIAMI AVE**





# AERIAL VIEW (N.E. to S.W. View)

loan Depot park



NADA Miami

N MIAMI AVE





5801 BISCAYNE BOULEVARD  
MIAMI, FLORIDA 33137

[www.chariff.com](http://www.chariff.com)

(O) 305-576-7474

(F) 305-576-7494

 @chariff

 @chariff

 @chariffrealty



**Lyle Chariff**

President/Broker

(305) 576-7474

[lyle@chariff.com](mailto:lyle@chariff.com)



**Mauricio Zapata**

Principal/Broker

(305) 576-7474

[mauricio@chariff.com](mailto:mauricio@chariff.com)