

### TOWN AND COUNTY CENTER

10459 Arlington Avenue  
Riverside, CA 92505

## RETAIL/OFFICE/MEDICAL SPACE



### DESCRIPTION

- Newer Construction
- High Traffic Count on Arlington Avenue, Very Busy Corridor
- Great Street Visibility
- Elementary, Middle and High Schools all within 1 Mile
- Great Lease Rates

### DEMOGRAPHICS

2019 ESTIMATE	POPULATION	MED. HH INCOME
1-MILE	17,388	\$51,246
2-MILE	114,300	\$56,230
3-MILE	309,791	\$64,925

### TRAFFIC COUNTS

ARLINGTON / CHADBOURNE	19,368 VPD
CYPRESS / TYLER	18,611 VPD
ARLINGTON / NORWOOD	14,764 VPD



### CONTACT

**JANINE PELTIER**  
INVESTMENT ASSOCIATE  
MARCUS & MILLICHAP

L CA 01856798  
D 909.456.3435  
janine.peltier@marcusmillichap.com

**KRISTI SCHWARTZ**  
LEASING AGENT  
SHERRY CROWE, BROKER

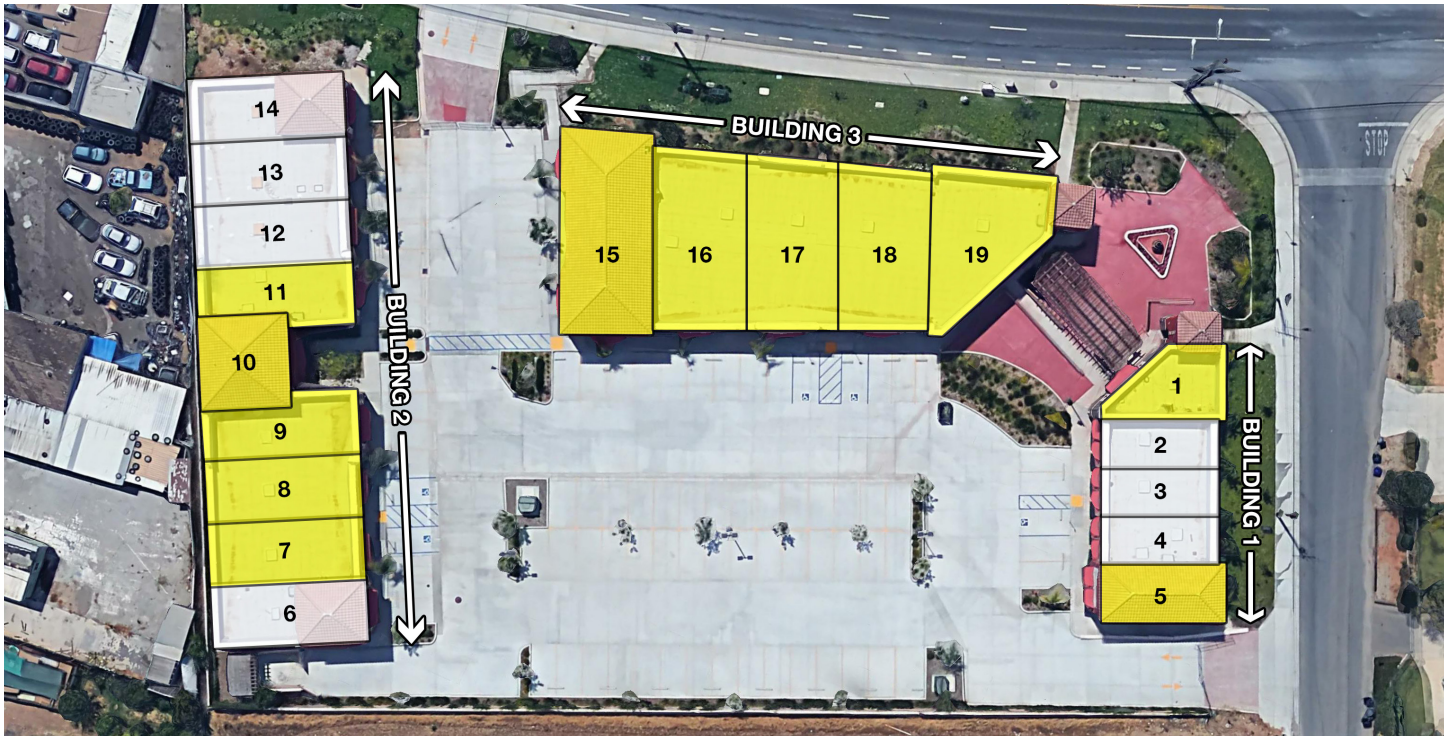
L CA 02048403  
D 909.268.9424  
kristi@cclre.com



### TOWN AND COUNTY CENTER

10459 Arlington Avenue  
Riverside, CA 92505

## SPACE AVAILABLE FOR LEASE



### ALL UNITS AVAILABLE FOR LEASE

UNIT	TENANT	SQFT
1	AVAILABLE	± 703.43
2 - 4	Martial Arts	---
5	AVAILABLE	± 703.15
6	Insurance	---
7	AVAILABLE	± 1,036.75
8	AVAILABLE	± 1,036.35

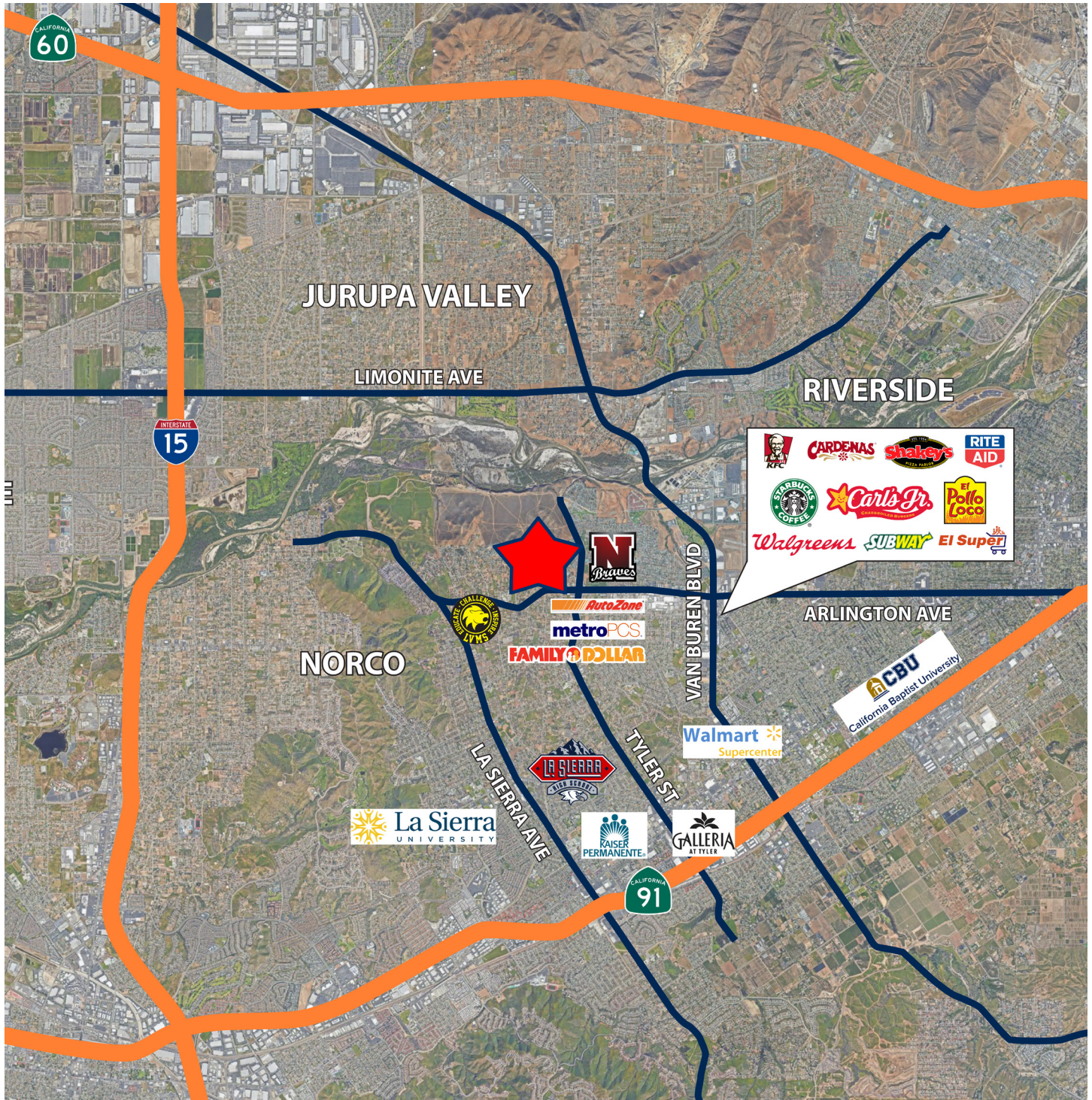
UNIT	TENANT	SQFT
9	AVAILABLE	± 1,027.59
10 A	AVAILABLE	± 851.27
10 B	AVAILABLE	± 851.27
11	AVAILABLE	± 1,027.49
12 - 14	Ray's Cafe	---
15 - 19	AVAILABLE	± 10,543.90



### TOWN AND COUNTY CENTER

10459 Arlington Avenue  
Riverside, CA 92505

### TRADE AREA



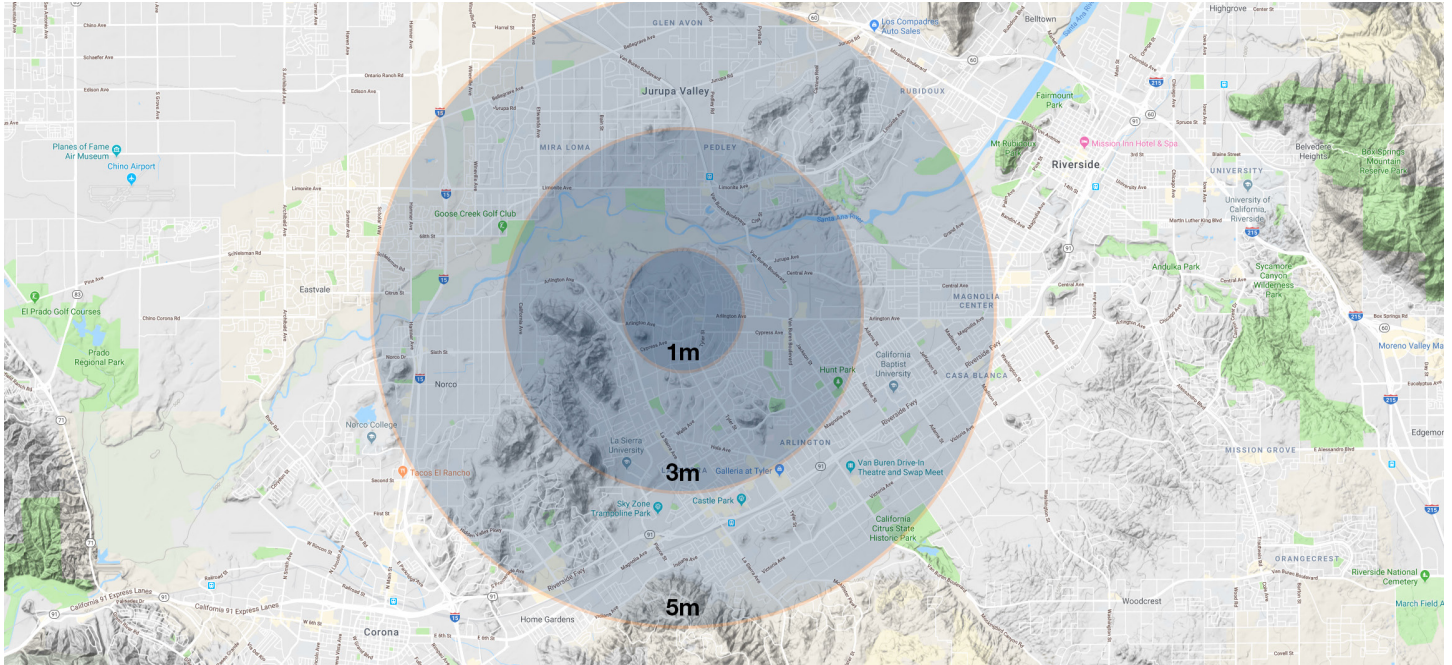




## TOWN AND COUNTY CENTER

10459 Arlington Avenue  
Riverside, CA 92505

## DEMOGRAPHICS



POPULATION	1 MILE	3 MILES	5 MILES
Total Population	17,388	114,300	309,791
Married No Children	961	7,244	22,366
Married With Children	1,428	9,237	25,295
Median Age	31.10	32.50	33.50
HOUSE HOLDS AND INCOME	1 MILE	3 MILES	5 MILES
Total Households	4,186	32,271	93,120
# of persons per HH	4.00	3.60	3.40
Average HH Income	\$66,883	\$70,190	\$79,190
ETHNICITY (%)	1 MILE	3 MILES	5 MILES
Hispanic Origin	76.43%	66.68%	58.91%
RACE (%)	1 MILE	3 MILES	5 MILES
White	86.62%	82.98%	80.91%
Black	3.54%	5.28%	6.11%
Asian	3.80%	5.61%	6.92%
American Indian	2.85%	2.53%	2.18%
Other	2.77%	3.01%	3.30%