

CONVERGE

LOGISTICS PARK

±121,670 SF AVAILABLE FOR LEASE
I-10 FREEWAY FRONTAGE

BUILDING B
46,318 SF AVAILABLE

BUILDING A
73,352 SF AVAILABLE

FULLY LEASED

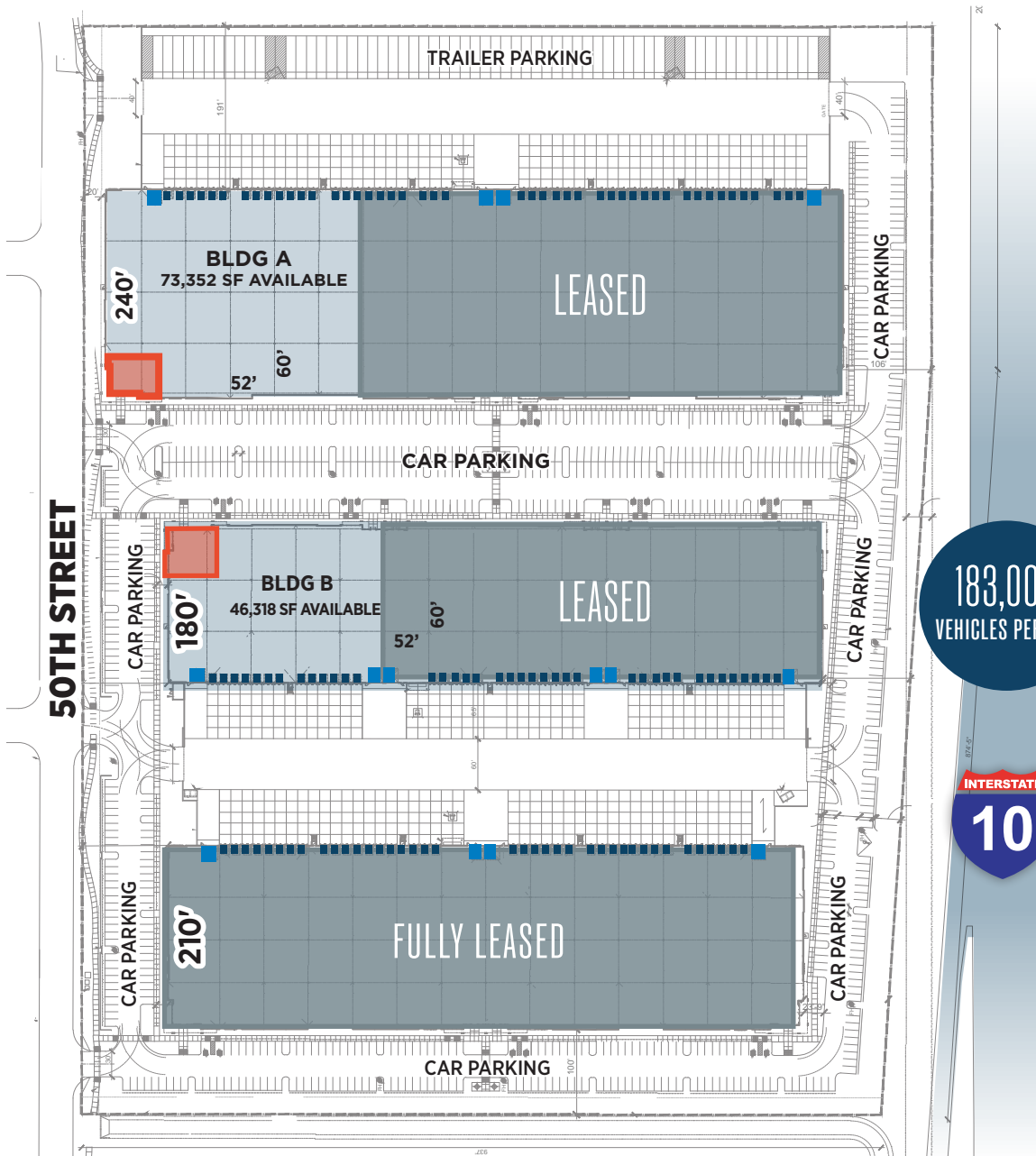
LEASED

LEASED

VIAWEST
Group

**CUSHMAN &
WAKEFIELD**

15175 SOUTH 50TH STREET
PHOENIX, AZ 85044



■ DOCK DOOR ■ GRADE LEVEL

183,000
VEHICLES PER DAY

INTERSTATE
10



TOTAL PROJECT SIZE:
510,831 SF (3 BUILDINGS)



SITE:
28.6 ACRES



SECURED
TRUCK COURT GATES



ZONING:
CP/GCP



I-10
FREEWAY FRONTAGE

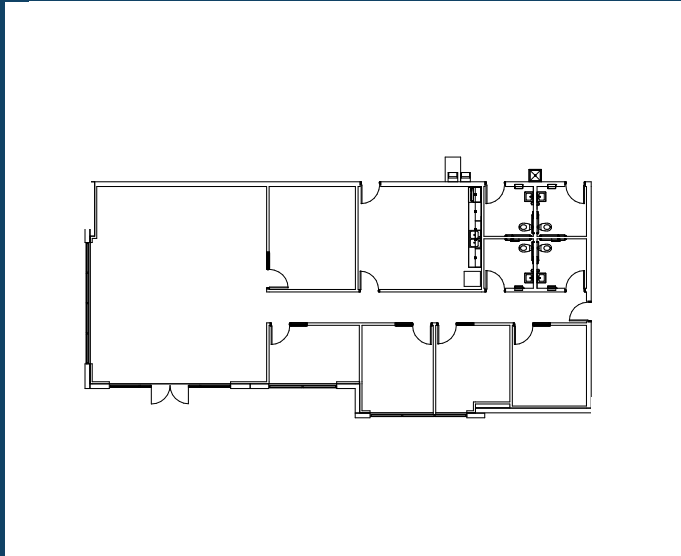
BUILDING A 73,352 SF AVAILABLE

BUILDING B 46,318 SF AVAILABLE



BUILDING A

73,352 SF AVAILABLE

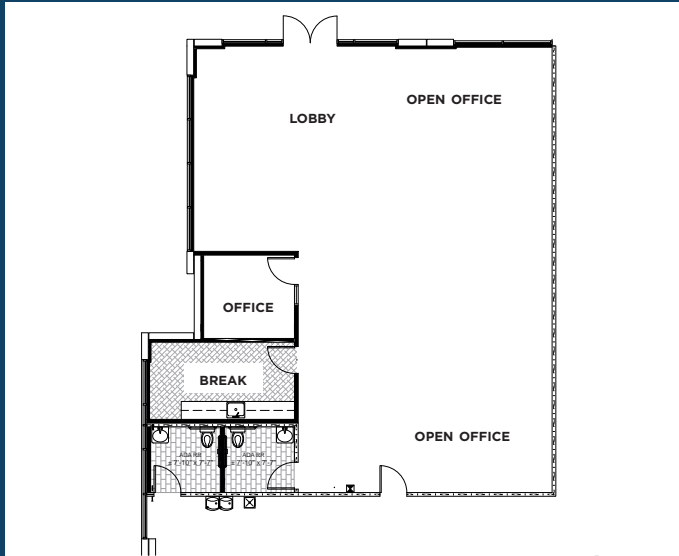


- Clear Height: 32'
- Parking: 1.75/1,000
- Trailer Parking
- 240' Building Depth
- Dock Packages Available
- 1 Drive In
- 16 Dock Doors
- 60'x52' Column Spacing
- ±2,400 Amps
- 3,000 SF Spec Office Built Out
- Additional 3,000 AMP SES On Site



BUILDING B

46,318 SF AVAILABLE

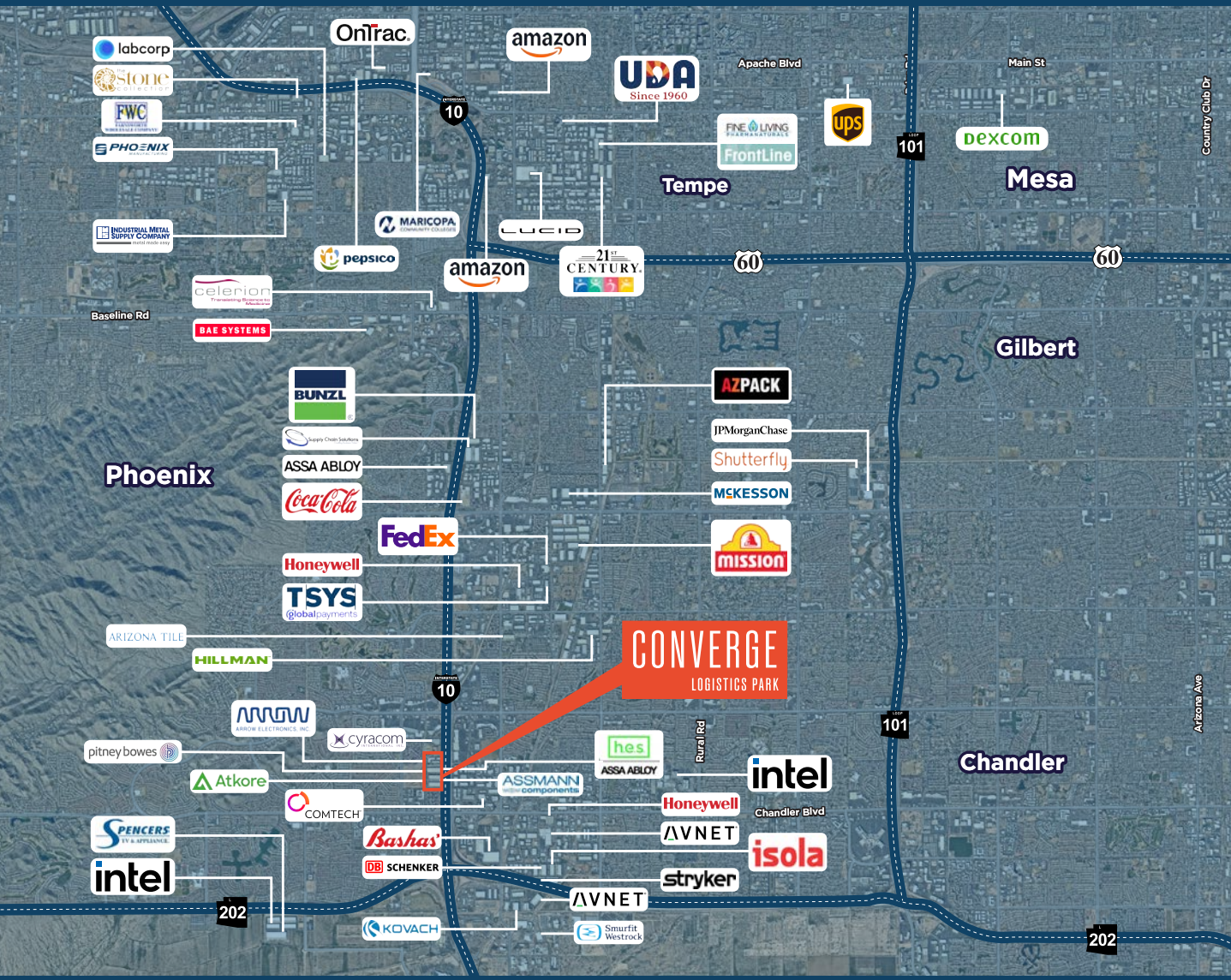


- Clear Height: 32'
- Parking: 1.75/1,000
- 180' Building Depth
- 2 Drive Ins
- 13 Dock Doors
- 60'x52' Column Spacing
- 2,500 SF Spec Office Built Out



DEMOGRAPHICS

- 4,932,833 PEOPLE IN PHOENIX METRO
- 5,327,947 PROJECTED POPULATION IN 2025
- 2,035,059 EMPLOYEES IN AREA (30-MINUTE DRIVETIME)
- MEDIAN HOUSEHOLD INCOME: \$65,872
- MEDIAN HOUSEHOLD INCOME: \$65,872
- MEDIAN AGE: 36



LOCATION & DRIVE TIMES

12 MINUTES (10 MILES)
TO PHOENIX SKY HARBOR
INTERNATIONAL AIRPORT

3 MINUTES (0.9 MILES)
TO INTERSTATE-10

3 MINUTES
TO LOOP 202/I-10
INTERCHANGE





MIKE HAENEL

Executive Vice Chair
602 224 4404
mike.haenel@cushwake.com

ANDY MARKHAM, SIOR

Executive Vice Chair
602 224 4408
andy.markham@cushwake.com

JUSTIN SMITH

Director
602 586 5938
justin.p.smith@cushwake.com

VIWEST
Group

