



ENTERPRISE DISTRIBUTION CENTER | FOR LEASE

1131 ENTERPRISE AVE., SUITE 13A, OKLAHOMA CITY, OK

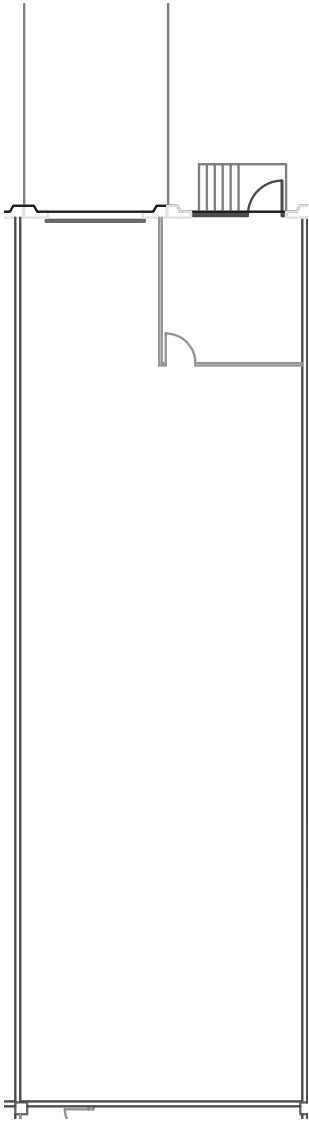
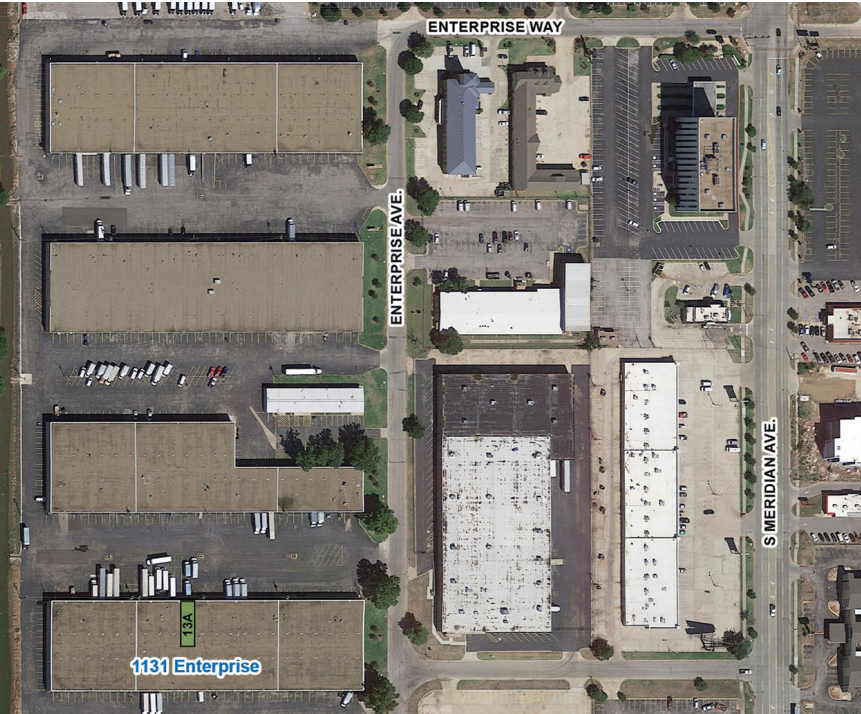
KARLEY HARPER, CCIM
kharper@newmarkrp.com
C: 405.371.3498

KRIS DAVIS, SIOR
kgdavis@newmarkrp.com
C: 405.202.9525

BRETT PRICE, CCIM, SIOR
bprice@newmarkrp.com
C: 405.613.8380

NEWMARK
ROBINSON PARK

1131 ENTERPRISE AVE., SUITE 13A / FOR LEASE



FLOOR PLAN

DETAILS

Available SF	1,824 SF
Lease Rate	Contact Broker
Building Size	80,256 SF
Zoning	I-3
Cross Streets	S Meridian Ave. & Enterprise Way

HIGHLIGHTS

- 192 SF office space
- 1,632 SF warehouse space
- 1 dock door
- 18' clear height
- 24' column spacing

PROPERTY OVERVIEW

Enterprise Distribution Center is located directly south of I-40 and less than 2 miles west of I-44 which allows for convenient and quick access to Oklahoma's interstate system. The property is located in a densely populated commercial area with a multitude of restaurants and national retailers within a 3 mile radius. Will Rogers World Airport is approximately 3 miles to the south.