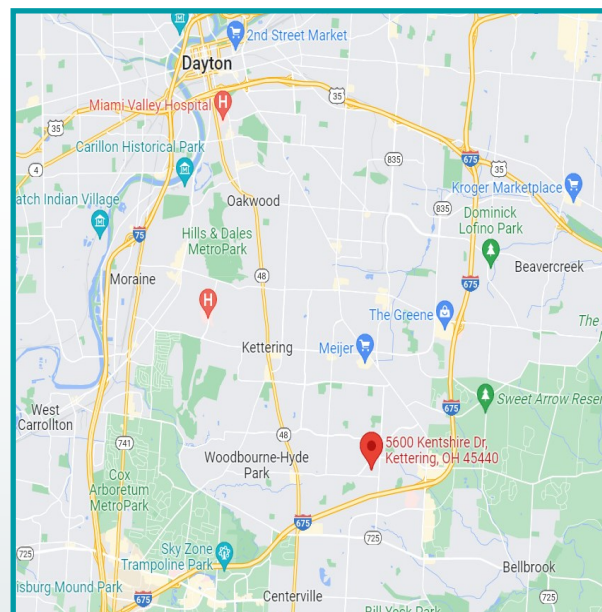




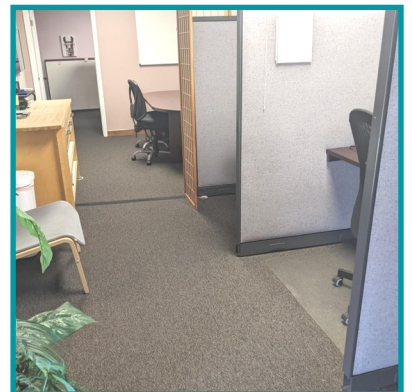
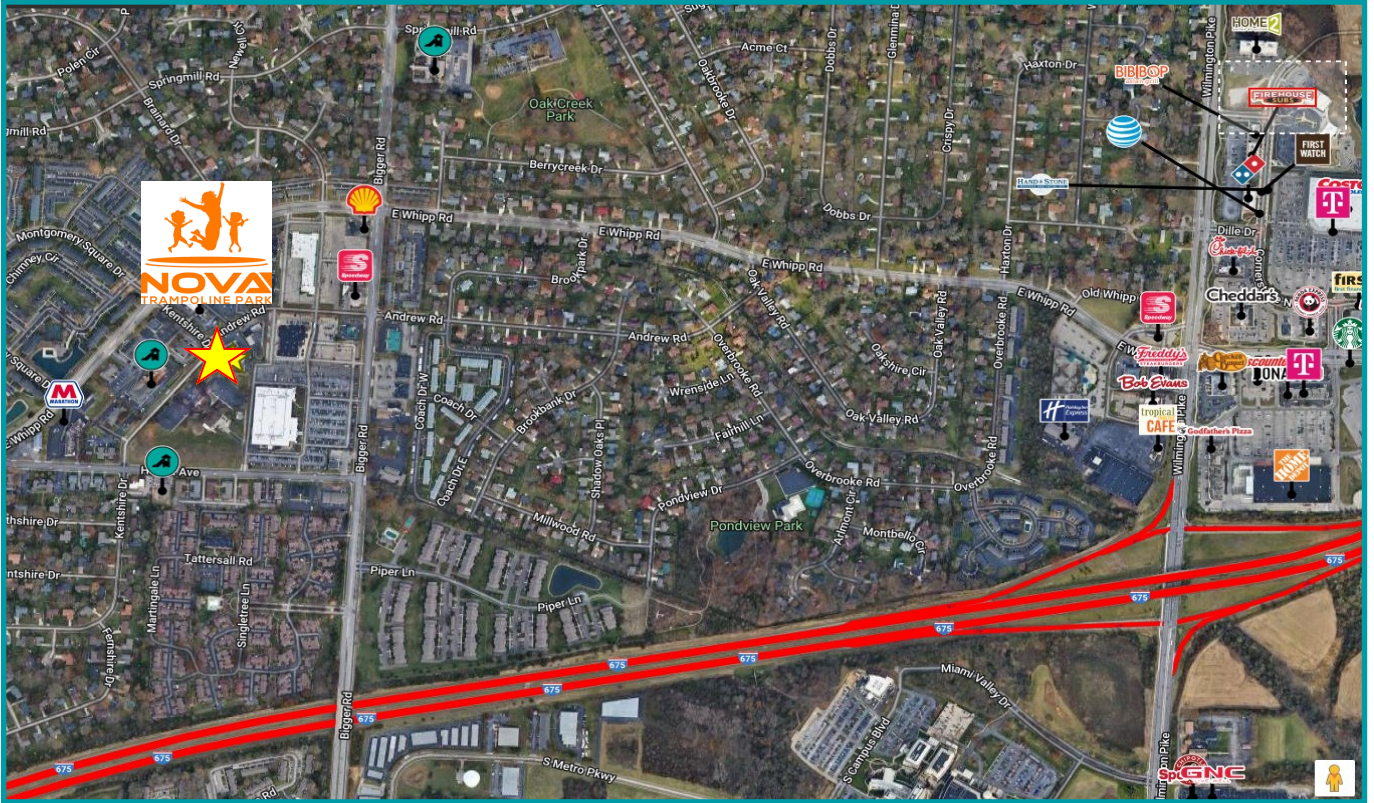
5600 Kentshire Drive - Kettering, Ohio 45440

- 25,817 sf Office Condo Building
- 1,816 SF Available
- Multiple Parcel Numbers - see back of flyer
- The combined units are # 1a;4a;13;13a;14;and 15
- First Floor Office Condo – ADA compliant!
- Large office suite with reception, waiting area, 2 private entrances from the parking lot with 4 entrances altogether, 5 offices, conference room, water in unit with 3 compartment sink, 7 cubicles that stay
- Lots of windows for natural light
- Access to shared kitchen/break room area
- Convenient location
- Easy access to SR 48 Main Street and I-675
- Large parking lot
- For Sale: \$129,500 (Currently owned by Neuropsychologist - Rose Mary Shaw, PSYD)



**For More Information
Please Contact:**

**Tracey Herron | Sr. VP of RE Leasing and Sales
Mobile: 937.216.4636
therron@equity.net**

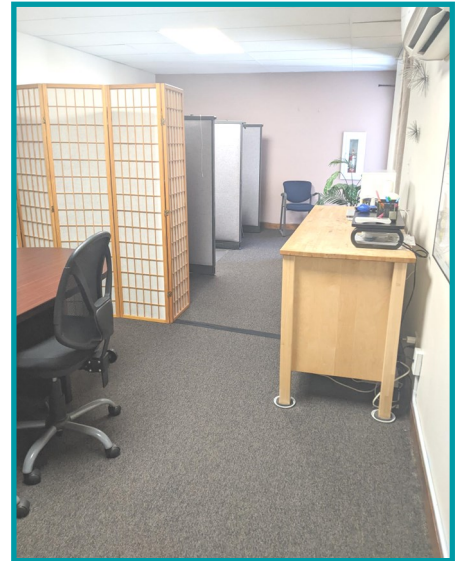




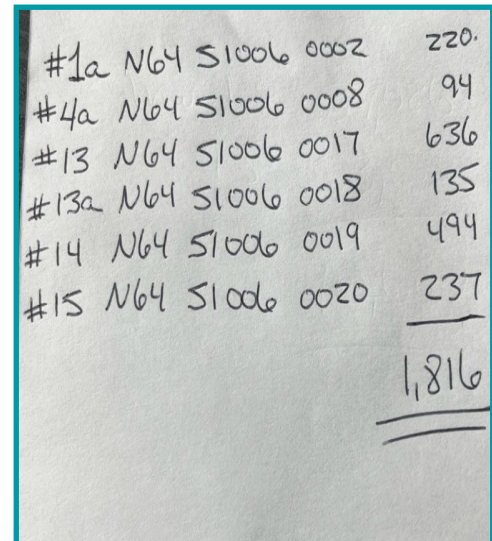
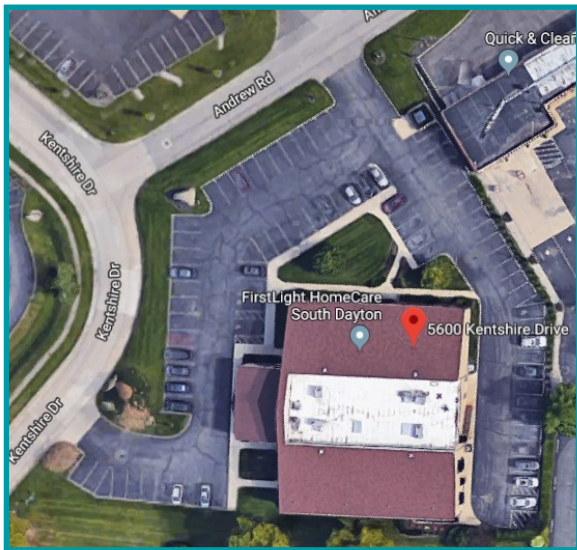
office

Commercial Real Estate Solutions®

5600 Kentshire Drive
Kettering, Ohio 45440



The information contained herein has been obtained from the property owner or other sources that we deem reliable. Although we have no reason to doubt its accuracy, no representation or warranty is made regarding the information, and the property is offered "as is". The submission may be modified or withdrawn at any time by the property owner.



Parking lot wraps around the front and side of building!

Directory at all entrances!

Parcel #'s and square footages