



**For Sublease**

## 3691 S TK Avenue Boise, ID

- Well located warehouse / Manufacturing space in SE Boise near I-84, downtown, and Micron
- Includes docks and grade level doors, office space and restrooms
- HVAC conditioned warehouse
- 9,838 SF including approximately 1,200 SF Office
- \$0.85 / SF NNN

### Contact

**Greg Gaddis**

208.869.9294

[greg@tenantrealtyadvisors.com](mailto:greg@tenantrealtyadvisors.com)

**Joshua Waitman**

208.369.1123

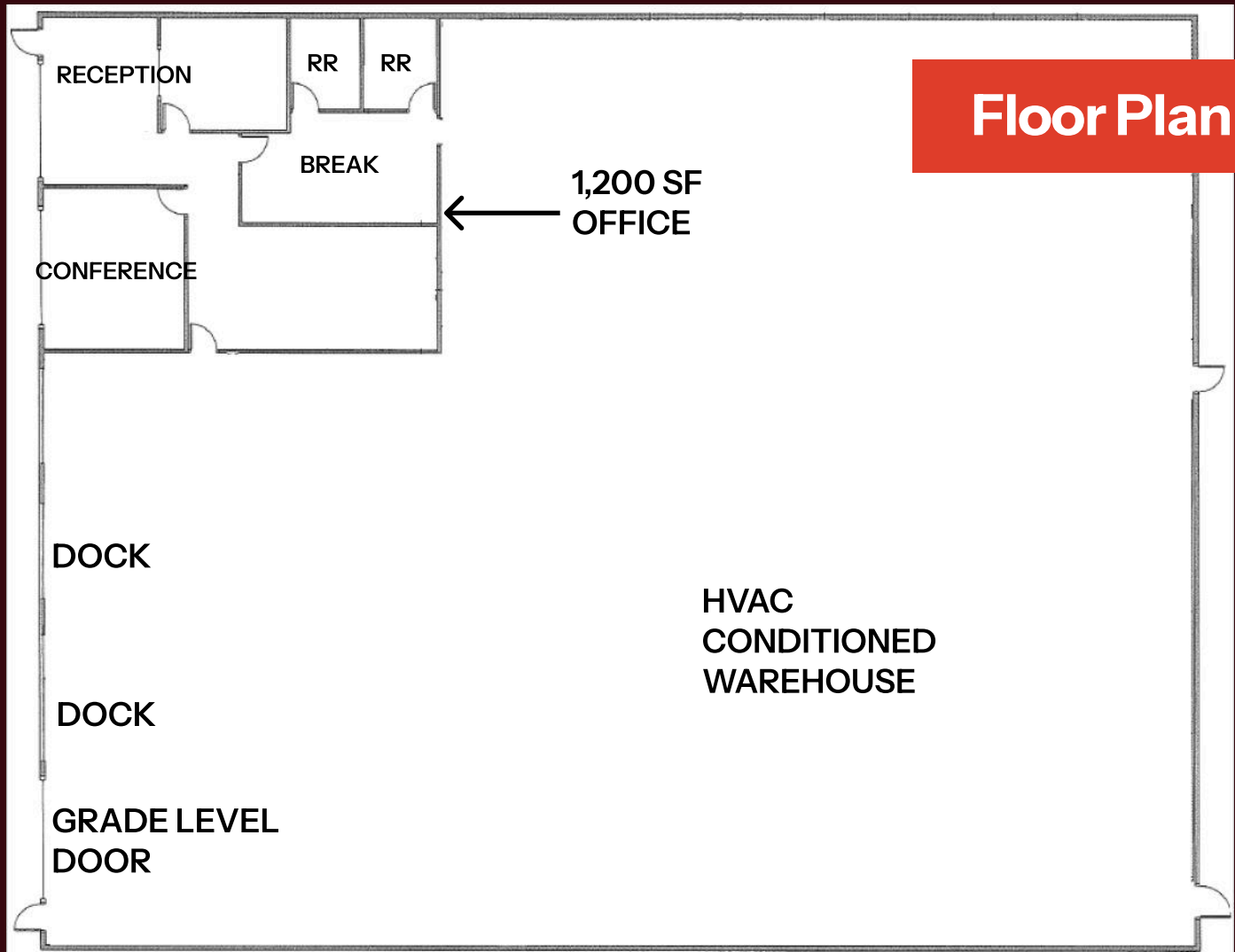
[joshua@tenantrealtyadvisors.com](mailto:joshua@tenantrealtyadvisors.com)

---

950 W. Bannock St., Suite 400  
Boise, ID 83702

---

**[TenantRealtyAdvisors.com](https://www.TenantRealtyAdvisors.com)**



## Floor Plan

### Overview

- 3691 S TK Avenue, Boise, ID
- 9,838 SF
- Rate: \$0.85 / SF NNN
- 2 Docks, 1 grade level door
- Power: 3 Phase
- Ceiling Height: 22'
- Preferred Term: Through 1/31/2027
- Direct lease possible



# LOCATION AERIAL

3691 S TK Avenue, Boise, ID

## Contact

**Greg Gaddis**

208.869.9294

greg@tenantrealtyadvisors.com

**Joshua Waitman**

208.369.1123

joshua@tenantrealtyadvisors.com

950 W. Bannock St., Suite 400  
Boise, ID 83702

[TenantRealtyAdvisors.com](http://TenantRealtyAdvisors.com)

