

# SAVITT PARTNERS

## 40 EAST 88TH STREET

Ground Floor Medical Co-op | 88th & Madison



**GROUND FLOOR: ~1,100 RSF**

- Ground Floor, Unit 1D
- Private street entrance
- Built medical office
- Zoned Medical/Professional: districts R10, R8B, C1-5, MP
- Electric included
- Tenant controlled incremental HVAC units
- Below market pricing; contact agent for details

### FOR MORE INFORMATION CONTACT:

**Michael Dubin**  
212-452-6042  
mdubin@savittpartners.com

**Elliot Zelinger**  
212-452-6078  
ezelinger@savittpartners.com

# 40 EAST 88TH STREET: ~1,100 RSF



**FOR MORE INFORMATION CONTACT:**

**Michael Dubin**

212-452-6042

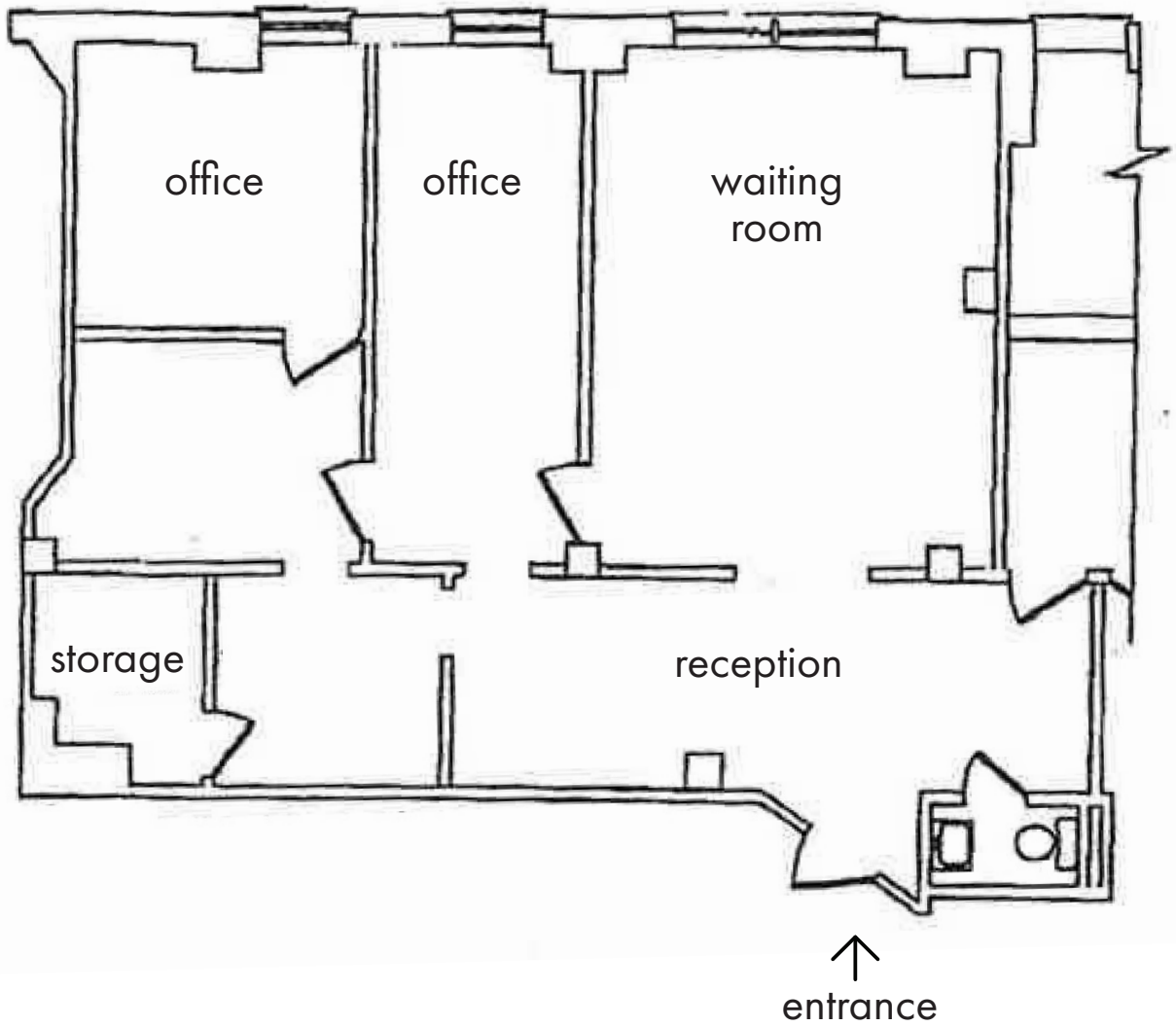
[mdubin@savittpartners.com](mailto:mdubin@savittpartners.com)

**Elliot Zelinger**

212-452-6078

[ezelinger@savittpartners.com](mailto:ezelinger@savittpartners.com)

# 40 EAST 88TH STREET: ~1,100 RSF



88th street

## FOR MORE INFORMATION CONTACT:

**Michael Dubin**

212-452-6042

[mdubin@savittpartners.com](mailto:mdubin@savittpartners.com)

**Elliot Zelinger**

212-452-6078

[ezelinger@savittpartners.com](mailto:ezelinger@savittpartners.com)