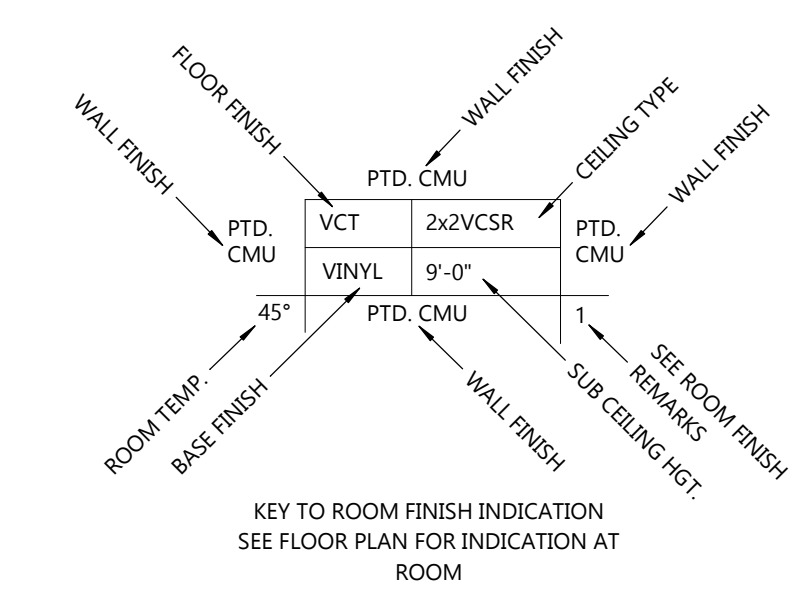
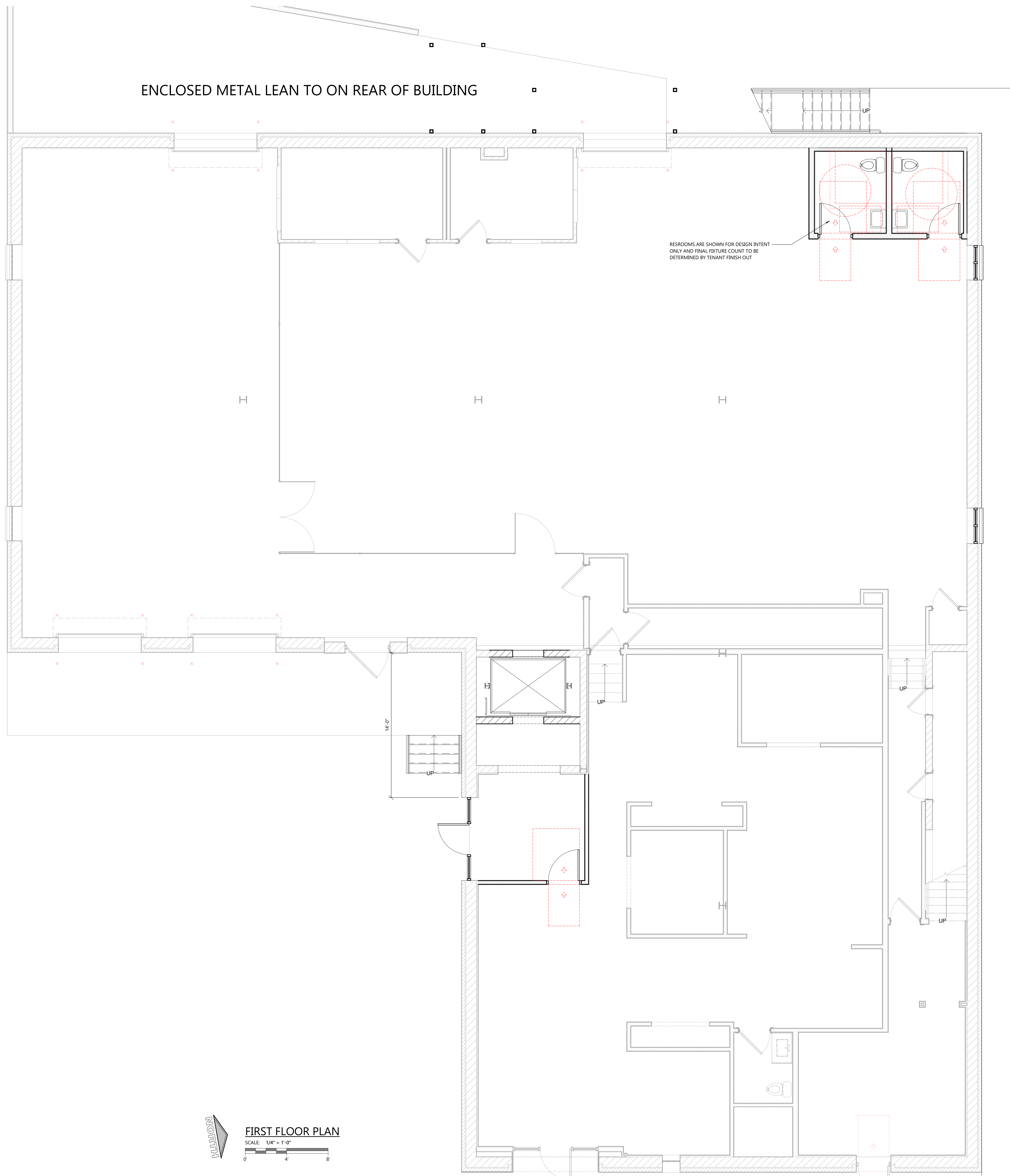


ENCLOSED METAL LEAN TO ON REAR OF BUILDING



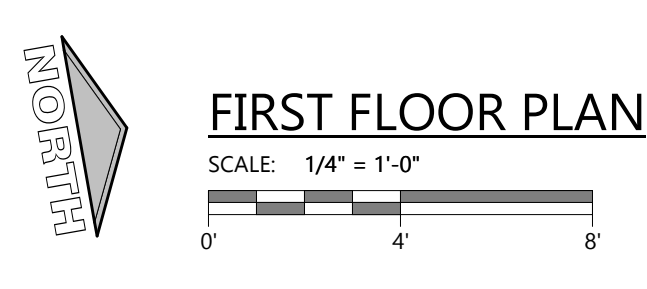
SYMBOLS LEGEND

	EXTERIOR WALL TYPE • SEE A4 SHEETS FOR WALL TYPES
	INTERIOR WALL TYPE • SEE A4 SHEETS FOR WALL TYPES
	PRECAST WALL TYPE • SEE A4 SHEETS FOR WALL TYPES
	IMP WALL TYPE • SEE A4 SHEETS FOR WALL TYPES
	FIRE RATED WALL TYPE • SEE A4 SHEETS FOR WALL TYPES
	SEE SHEET A.X.X FOR CURB DETAILS
	EXIT SIGNAGE
	FIRE EXTINGUISHER • SEE A5 SHEETS
	FIRE EXTINGUISHER w/ CABINET • SEE A5 SHEETS
	GUARD POST/GOAL POST DESIGNATION • SEE SHEET A6.X FOR DETAILS
	EXISTING WALL TO REMAIN
	EXISTING WALL TO BE DEMOLISHED
	STUD WALL
	CONCRETE WALL
	MASONRY VENEER
	C.M.U. WALL
	(1) HOUR FIRE RATED
	(2) HOUR FIRE RATED
	(3) HOUR FIRE RATED
	(4) HOUR FIRE RATED
SEE PLAN FOR ALL WALL WIDTHS	
	EXISTING DOOR TO REMAIN
	NEW DOOR

- ### GENERAL NOTES
- ALL INTERIOR DIMS. ARE FROM FACE-OF-STUD TO FACE-OF-STUD.
 - ALL INTERIOR WALLS TO BE 2x4 OR 2x6 @ 16" O.C. (SEE FLOOR PLAN FOR SIZE) W/ 1/2" OR 5/8" GYPSUM BOARD BOTH SIDES - EXTEND TO BOTTOM CHORD OF TRUSSES / UNDERSIDE OF DECK.
 - ALL INTERIOR WALLS TO BE 3 5/8" OR 6" METAL STUDS @ 16" O.C. (SEE FLOOR PLAN FOR SIZES) W/ 5/8" GYPSUM BOARD BOTH SIDES - EXTEND TO BOTTOM CHORD OF TRUSSES.
 - PROVIDE 3 1/2" SOUND BATT INSULATION AROUND PERIMETER OF TOILET ROOM AND OFFICE WALLS.
 - MISCELLANEOUS HARDWARE INCLUDED: HANDICAP HARDWARE.
 - PROVIDE WOOD BLOCKING FOR ANY FURNISHINGS BY OWNER. (VERIFY LOCATIONS)
 - ALL EXTERIOR WINDOWS TO HAVE ALUMINUM FLASHING RETURNS AT HEAD, JAMBS, AND SILL OF ALL WINDOWS.
 - ALL EXTERIOR WINDOWS TO HAVE GYPSUM BOARD RETURNS AT HEAD AND JAMBS AND PLASTIC LAMINATE COVERED WOOD SILL.
 - INTERIOR GLAZED OPENINGS IN OFFICES TO BE 1/4" GLASS SET IN OAK JAMBS AND STOPS (SEE PLAN FOR SIZES).
 - SEE A4 SHEETS FOR TYPICAL CONTROL JOINT DETAILS.
 - SEE A7 SHEETS FOR TYPICAL ATTIC ACCESS PANEL.
 - SEE A7 SHEETS FOR TYPICAL MECHANICAL PIPE PENETRATION THRU CEILING VAPOR RETARDER.
 - ALL CABINETS AND COUNTERTOPS TO HAVE PLASTIC LAMINATE FRONTS AND TOPS.
 - KITCHEN AND CABINET W/ COUNTERS BY GENERAL CONTRACTOR AS REQUIRED.
 - ALL CABINETRY AND EQUIPMENT BY OTHERS - SEE EQUIPMENT DRAWING BY INTERIOR DESIGNER FOR REQUIREMENTS.
 - FOOD PREP AREA TO BE VERIFIED W/ OWNER. PROVIDE SHOP DRAWINGS ON EQUIPMENT.

SALES & SERVICE COUNTERS

IN RETAIL STORES WHERE COUNTERS HAVE CASH REGISTERS AND ARE PROVIDED FOR SALES OR DISTRIBUTION OF GOODS OR SERVICES TO THE PUBLIC, AT LEAST ONE OF EACH TYPE SHALL HAVE A PORTION OF THE COUNTER WHICH IS AT LEAST 36" IN LENGTH WITH A MAXIMUM HEIGHT OF 36" ABOVE THE FINISH FLOOR. COUNTER SHALL BE ON AN ACCESSIBLE ROUTE COMPLYING WITH A.D.A. GUIDELINE 4.3.



PROJECT INFORMATION

PROPOSED BUILDING RENOVATION FOR:
CMR
810 RAMSEUR ST • DURHAM, NC 27701

PROFESSIONAL SEAL

PRELIMINARY DATES
JULY 18, 2024
AUG. 8, 2024

JOB NUMBER
240144400

SHEET NUMBER

A1.1

NOT FOR CONSTRUCTION

© 2024 EXCEL ENGINEERING, INC. ALL RIGHTS RESERVED. 8/16/2024 9:17:39 AM

PROJECT INFORMATION

PROPOSED BUILDING RENOVATION FOR:
CMR
810 RAMSEUR ST • DURHAM, NC 27701

PROFESSIONAL SEAL

PRELIMINARY DATES
JULY 18, 2024
AUG. 8, 2024

JOB NUMBER
240144400

SHEET NUMBER

A1.2

NOT FOR CONSTRUCTION

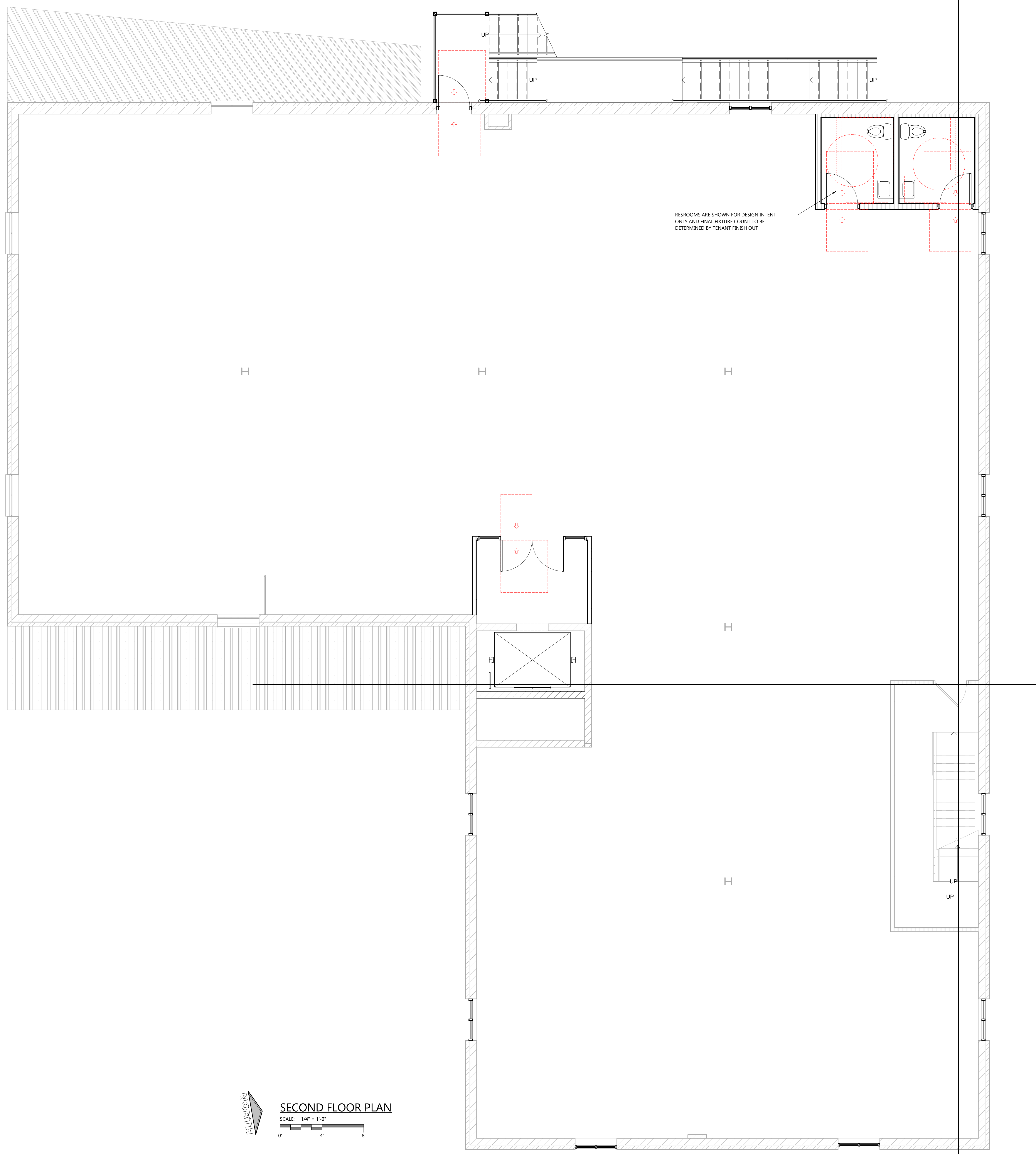
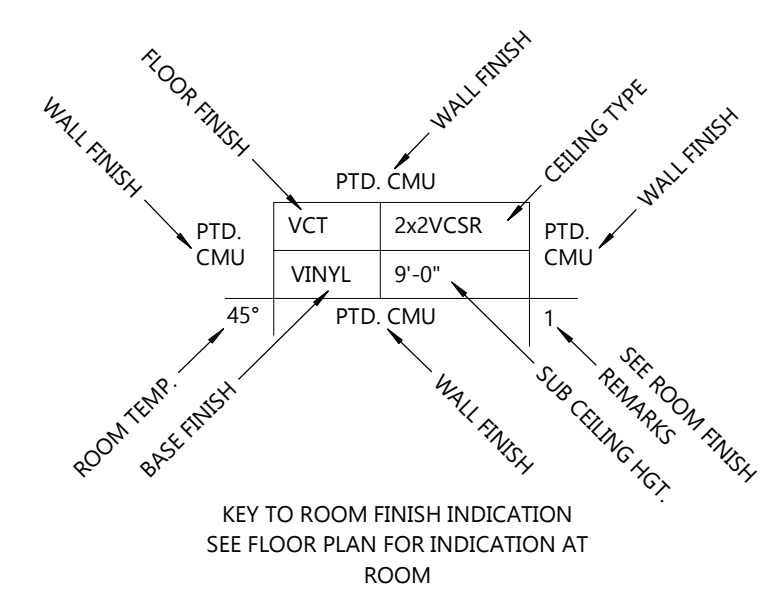
SYMBOLS LEGEND

	EXTERIOR WALL TYPE • SEE A4 SHEETS FOR WALL TYPES
	INTERIOR WALL TYPE • SEE A4 SHEETS FOR WALL TYPES
	PRECAST WALL TYPE • SEE A4 SHEETS FOR WALL TYPES
	IMP WALL TYPE • SEE A4 SHEETS FOR WALL TYPES
	FIRE RATED WALL TYPE • SEE A4 SHEETS FOR WALL TYPES
	SEE SHEET AX-X FOR CURB DETAILS
	EXIT SIGNAGE
	FIRE EXTINGUISHER -SEE AS SHEETS
	FIRE EXTINGUISHER w/ CABINET -SEE AS SHEETS
	GUARD POST/GOAL POST DESIGNATION -SEE SHEET AX-X FOR DETAILS
	EXISTING WALL TO REMAIN
	EXISTING WALL TO BE DEMOLISHED
	STUD WALL
	CONCRETE WALL
	MASONRY VENEER
	C.M.U. WALL
	(1) HOUR FIRE RATED
	(2) HOUR FIRE RATED
	(3) HOUR FIRE RATED
	(4) HOUR FIRE RATED
SEE PLAN FOR ALL WALL WIDTHS	
	EXISTING DOOR TO REMAIN
	NEW DOOR

- GENERAL NOTES**
- ALL INTERIOR DIMS. ARE FROM FACE-OF-STUD TO FACE-OF-STUD.
 - ALL INTERIOR WALLS TO BE 2x4 OR 2x6 @ 16" O.C. (SEE FLOOR PLAN FOR SIZE) W/ 1/2" OR 5/8" GYPSUM BOARD BOTH SIDES - EXTEND TO BOTTOM CHORD OF TRUSSES / UNDERSIDE OF DECK.
 - ALL INTERIOR WALLS TO BE 3 5/8" OR 6" METAL STUDS @ 16" O.C. (SEE FLOOR PLAN FOR SIZE) W/ 5/8" GYPSUM BOARD BOTH SIDES - EXTEND TO BOTTOM CHORD OF TRUSSES.
 - PROVIDE 3 1/2" SOUND BATT INSULATION AROUND PERIMETER OF TOILET ROOM AND OFFICE WALLS.
 - MISCELLANEOUS HARDWARE INCLUDED: HANDICAP HARDWARE.
 - PROVIDE WOOD BLOCKING FOR ANY FURNISHINGS BY OWNER (VERIFY LOCATIONS).
 - ALL EXTERIOR WINDOWS TO HAVE ALUMINUM FLASHING RETURNS AT HEAD, JAMBS, AND SILL OF ALL WINDOWS.
 - ALL EXTERIOR WINDOWS TO HAVE GYPSUM BOARD RETURNS AT HEAD AND JAMBS AND PLASTIC LAMINATE COVERED WOOD SILL.
 - INTERIOR GLAZED OPENINGS IN OFFICES TO BE 1/4" GLASS SET IN OAK JAMBS AND STOPS (SEE PLAN FOR SIZES).
 - SEE A4 SHEETS FOR TYPICAL CONTROL JOINT DETAILS.
 - SEE A7 SHEETS FOR TYPICAL ATTIC ACCESS PANEL.
 - SEE A7 SHEETS FOR TYPICAL MECHANICAL PIPE PENETRATION THRU CEILING VAPOR RETARDER.
 - ALL CABINETS AND COUNTERTOPS TO HAVE PLASTIC LAMINATE FRONTS AND TOPS.
 - KITCHEN AND CABINET W/ COUNTERS BY GENERAL CONTRACTOR AS REQUIRED.
 - ALL CABINETRY AND EQUIPMENT BY OTHERS - SEE EQUIPMENT DRAWING BY INTERIOR DESIGNER FOR REQUIREMENTS.
 - FOOD PREP AREA TO BE VERIFIED W/ OWNER. PROVIDE SHOP DRAWINGS ON EQUIPMENT.

SALES & SERVICE COUNTERS

IN RETAIL STORES WHERE COUNTERS HAVE CASH REGISTERS AND ARE PROVIDED FOR SALES OR DISTRIBUTION OF GOODS OR SERVICES TO THE PUBLIC, AT LEAST ONE OF EACH TYPE SHALL HAVE A PORTION OF THE COUNTER WHICH IS AT LEAST 36" IN LENGTH WITH A MAXIMUM HEIGHT OF 36" ABOVE THE FINISH FLOOR. COUNTER SHALL BE ON AN ACCESSIBLE ROUTE COMPLYING WITH A.D.A. GUIDELINE 4.3.



SECOND FLOOR PLAN
SCALE: 1/4" = 1'-0"
0 4 8

© 2024 EXCEL ENGINEERING, INC. ALL RIGHTS RESERVED. 8/16/2024 9:17:39 AM

PROJECT INFORMATION

PROPOSED BUILDING RENOVATION FOR:
CMR
 810 RAMSEUR ST • DURHAM, NC 27701

PROFESSIONAL SEAL

PRELIMINARY DATES
 JULY 18, 2024
 AUG. 8, 2024

NOT FOR CONSTRUCTION

JOB NUMBER
 240144400

SHEET NUMBER
A1.3

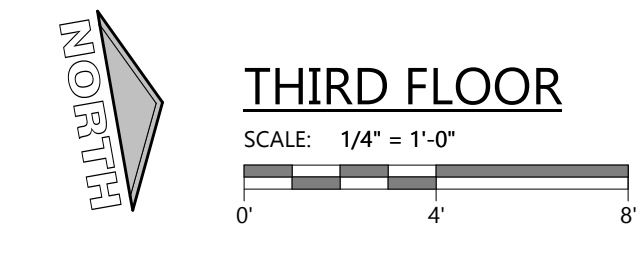
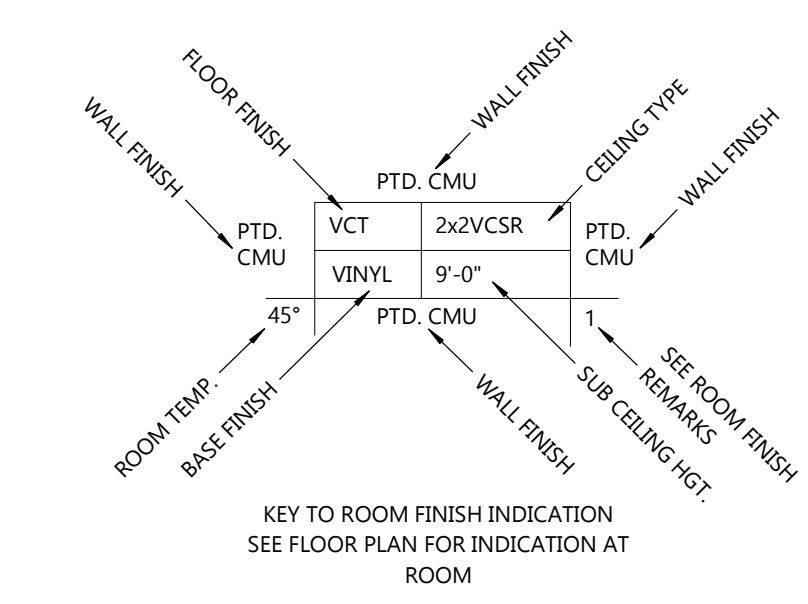
SYMBOLS LEGEND

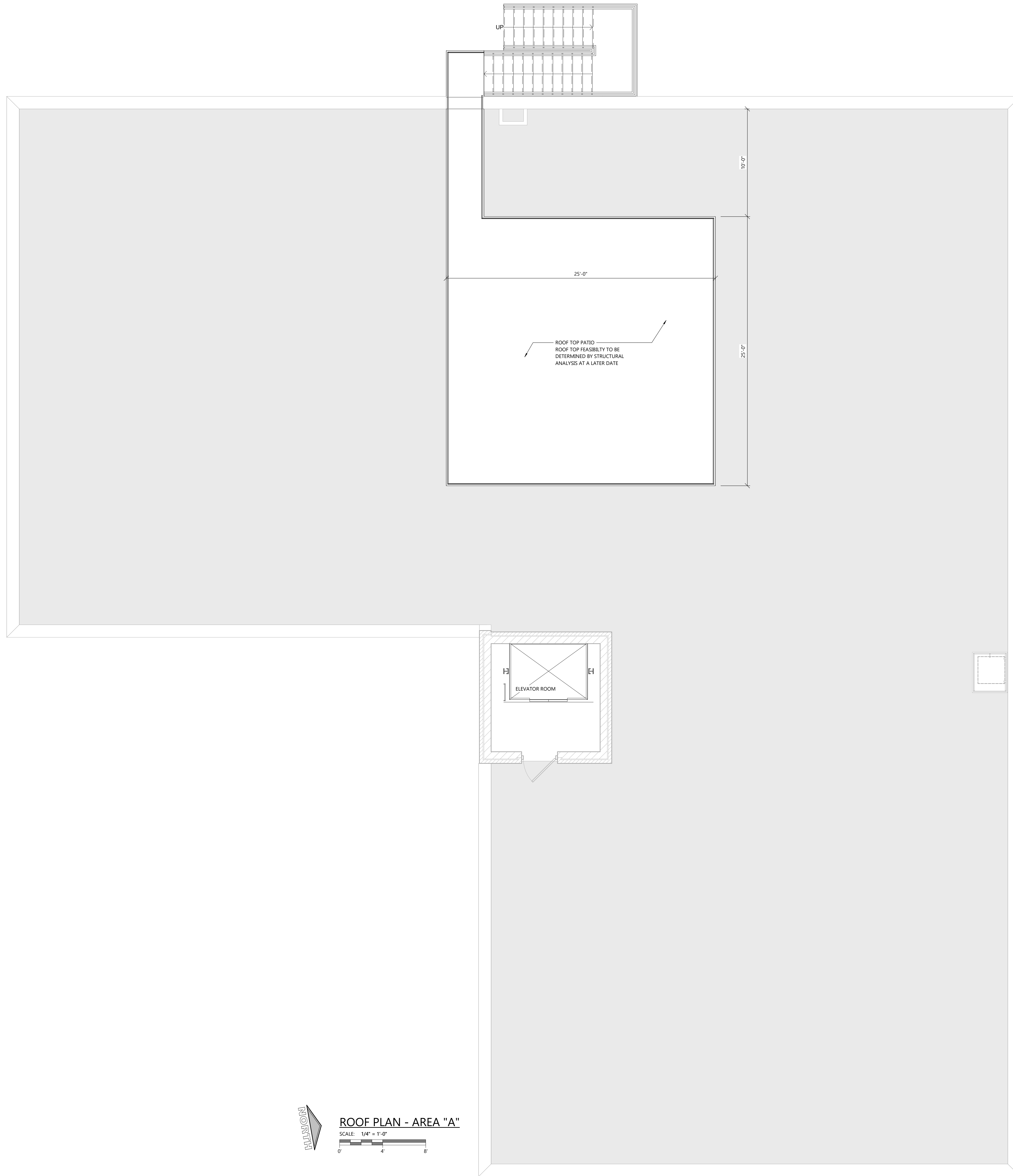
[M1]	EXTERIOR WALL TYPE • SEE A4 SHEETS FOR WALL TYPES
[W2]	INTERIOR WALL TYPE • SEE A4 SHEETS FOR WALL TYPES
[1-1+HP]	PRECAST WALL TYPE • SEE A4 SHEETS FOR WALL TYPES
[IMP]	IMP WALL TYPE • SEE A4 SHEETS FOR WALL TYPES
[M23-FW]	FIRE RATED WALL TYPE • SEE A4 SHEETS FOR WALL TYPES
[C]	SEE SHEET AX-X FOR CURB DETAILS
[X]	EXIT SIGNAGE
[E]	FIRE EXTINGUISHER - SEE AS SHEETS
[E-C]	FIRE EXTINGUISHER W/ CABINET - SEE AS SHEETS
[GP-X]	GUARD POST/GOAL POST DESIGNATION - SEE SHEET AX-X FOR DETAILS
[---]	EXISTING WALL TO REMAIN
[---]	EXISTING WALL TO BE DEMOLISHED
[---]	STUD WALL
[---]	CONCRETE WALL
[---]	MASONRY VENEER
[---]	C.M.U. WALL
[---]	(1) HOUR FIRE RATED
[---]	(2) HOUR FIRE RATED
[---]	(3) HOUR FIRE RATED
[---]	(4) HOUR FIRE RATED
[---]	SEE PLAN FOR ALL WALL WIDTHS
[---]	EXISTING DOOR TO REMAIN
[---]	NEW DOOR

- GENERAL NOTES**
- ALL INTERIOR DIMS. ARE FROM FACE-OF-STUD TO FACE-OF-STUD.
 - ALL INTERIOR WALLS TO BE 2x4 OR 2x6 @ 16" O.C. (SEE FLOOR PLAN FOR SIZE) W/ 1/2" OR 5/8" GYPSUM BOARD BOTH SIDES - EXTEND TO BOTTOM CHORD OF TRUSSES / UNDERSIDE OF DECK.
 - ALL INTERIOR WALLS TO BE 3 5/8" OR 6" METAL STUDS @ 16" O.C. (SEE FLOOR PLAN FOR SIZE) W/ 5/8" GYPSUM BOARD BOTH SIDES - EXTEND TO BOTTOM CHORD OF TRUSSES.
 - PROVIDE 3 1/2" SOUND BATT INSULATION AROUND PERIMETER OF TOILET ROOM AND OFFICE WALLS.
 - MISCELLANEOUS HARDWARE INCLUDED: HANDICAP HARDWARE.
 - PROVIDE WOOD BLOCKING FOR ANY FURNISHINGS BY OWNER (VERIFY LOCATIONS).
 - ALL EXTERIOR WINDOWS TO HAVE ALUMINUM FLASHING RETURNS AT HEAD, JAMBS, AND SILL OF ALL WINDOWS.
 - ALL EXTERIOR WINDOWS TO HAVE GYPSUM BOARD RETURNS AT HEAD AND JAMBS AND PLASTIC LAMINATE COVERED WOOD SILL.
 - INTERIOR GLAZED OPENINGS IN OFFICES TO BE 1/4" GLASS SET IN OAK JAMBS AND STOPS (SEE PLAN FOR SIZES).
 - SEE A4 SHEETS FOR TYPICAL CONTROL JOINT DETAILS.
 - SEE A7 SHEETS FOR TYPICAL ATTIC ACCESS PANEL.
 - SEE A7 SHEETS FOR TYPICAL MECHANICAL PIPE PENETRATION THRU CEILING VAPOR RETARDER.
 - ALL CABINETS AND COUNTERTOPS TO HAVE PLASTIC LAMINATE FRONTS AND TOPS.
 - KITCHEN AND CABINET W/ COUNTERS BY GENERAL CONTRACTOR AS REQUIRED.
 - ALL CABINETRY AND EQUIPMENT BY OTHERS - SEE EQUIPMENT DRAWING BY INTERIOR DESIGNER FOR REQUIREMENTS.
 - FOOD PREP AREA TO BE VERIFIED W/ OWNER. PROVIDE SHOP DRAWINGS ON EQUIPMENT.

SALES & SERVICE COUNTERS

IN RETAIL STORES WHERE COUNTERS HAVE CASH REGISTERS AND ARE PROVIDED FOR SALES OR DISTRIBUTION OF GOODS OR SERVICES TO THE PUBLIC, AT LEAST ONE OF EACH TYPE SHALL HAVE A PORTION OF THE COUNTER WHICH IS AT LEAST 36" IN LENGTH WITH A MAXIMUM HEIGHT OF 36" ABOVE THE FINISH FLOOR. COUNTER SHALL BE ON AN ACCESSIBLE ROUTE COMPLYING WITH A.D.A. GUIDELINE 4.3.





ROOF LEGEND	
RD	ROOF DRAIN
OVD	OVERFLOW DRAIN
DS	DOWNSPOUT
OFS	OVERFLOW SCUPPER
SB	SCUPPER BOX AND DOWNSPOUT
→	ROOF SLOPE DIRECTION
□	ROOF STRUCTURE IS PITCHED TO ACHIEVE SLOPE
▨	TAPERED INSULATION AT MIN. 1/4" PER FOOT SLOPE UNLESS INDICATED OTHERWISE
▲	CRICKET ON HIGH SIDE OF ROOF EQUIPMENT
▬	WALKPATH, FIELD VERIFY WITH OWNER AND INSTALLED EQUIPMENT.
- - - -	CHANGE IN ROOFING SPEC
- - - - -	ROOF EXPANSION JOINT

EXCEL
 Always a Better Plan
 100 Camelot Drive
 Fond du Lac, WI 54935
 920-926-9800
 excelengineer.com

PROJECT INFORMATION

PROPOSED BUILDING RENOVATION FOR:
CMR
 810 RAMSEUR ST • DURHAM, NC 27701

PROFESSIONAL SEAL

PRELIMINARY DATES
 JULY 18, 2024
 AUG. 8, 2024

JOB NUMBER
 240144400

SHEET NUMBER
A1.4

NOT FOR CONSTRUCTION

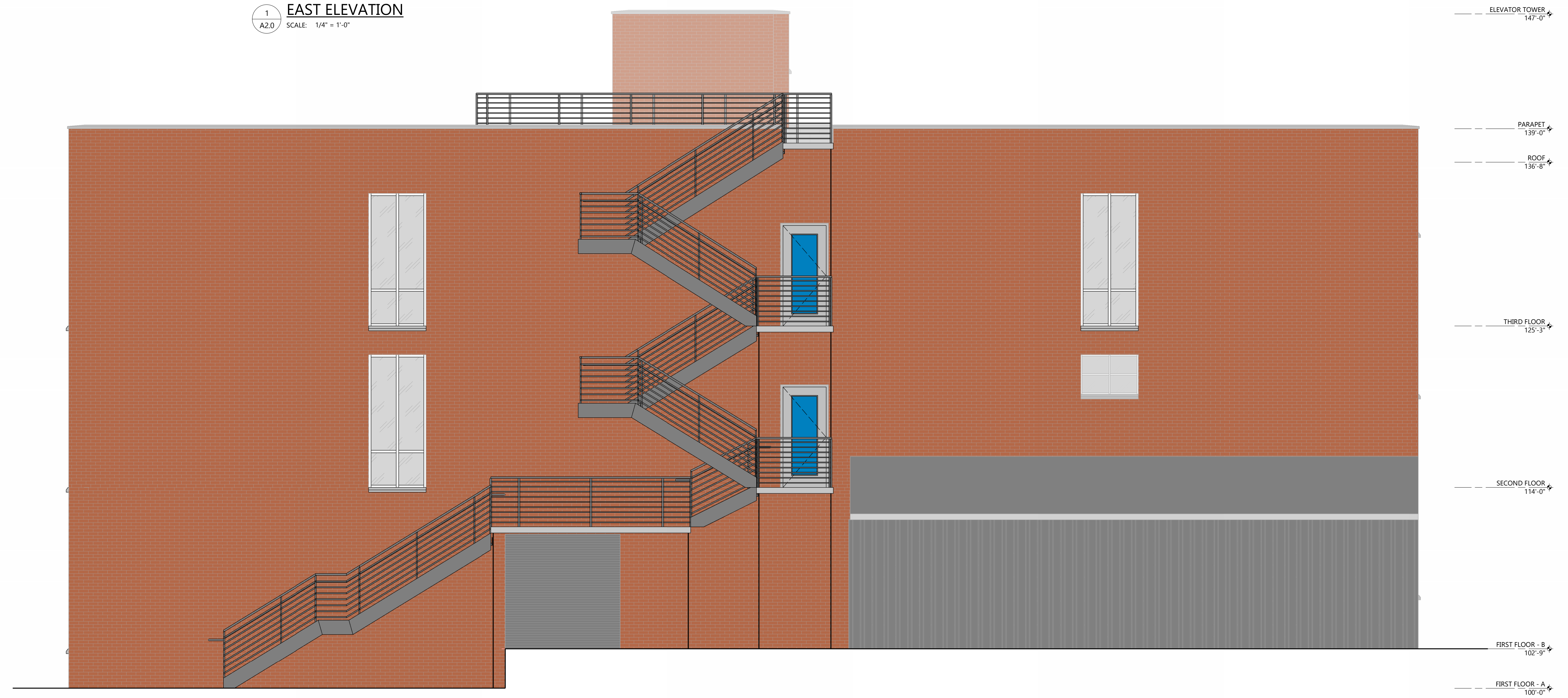
© 2024 EXCEL ENGINEERING, INC. ALL RIGHTS RESERVED. 8/16/2024 9:11:26 AM

PROJECT INFORMATION

PROPOSED BUILDING RENOVATION FOR:
CMR
 810 RAMSEUR ST • DURHAM, NC 27701



1 EAST ELEVATION
 A2.0 SCALE: 1/4" = 1'-0"



2 WEST ELEVATION
 A2.0 SCALE: 1/4" = 1'-0"

PROFESSIONAL SEAL

PRELIMINARY DATES
 JULY 18, 2024
 AUG. 8, 2024

NOT FOR CONSTRUCTION

JOB NUMBER
 240144400

SHEET NUMBER
A2.0

© 2024 EXCEL ENGINEERING, INC. ALL RIGHTS RESERVED. 8/8/2024 9:17:55 AM

PROJECT INFORMATION

PROPOSED BUILDING RENOVATION FOR:
CMR
 810 RAMSEUR ST • DURHAM, NC 27701

PROFESSIONAL SEAL

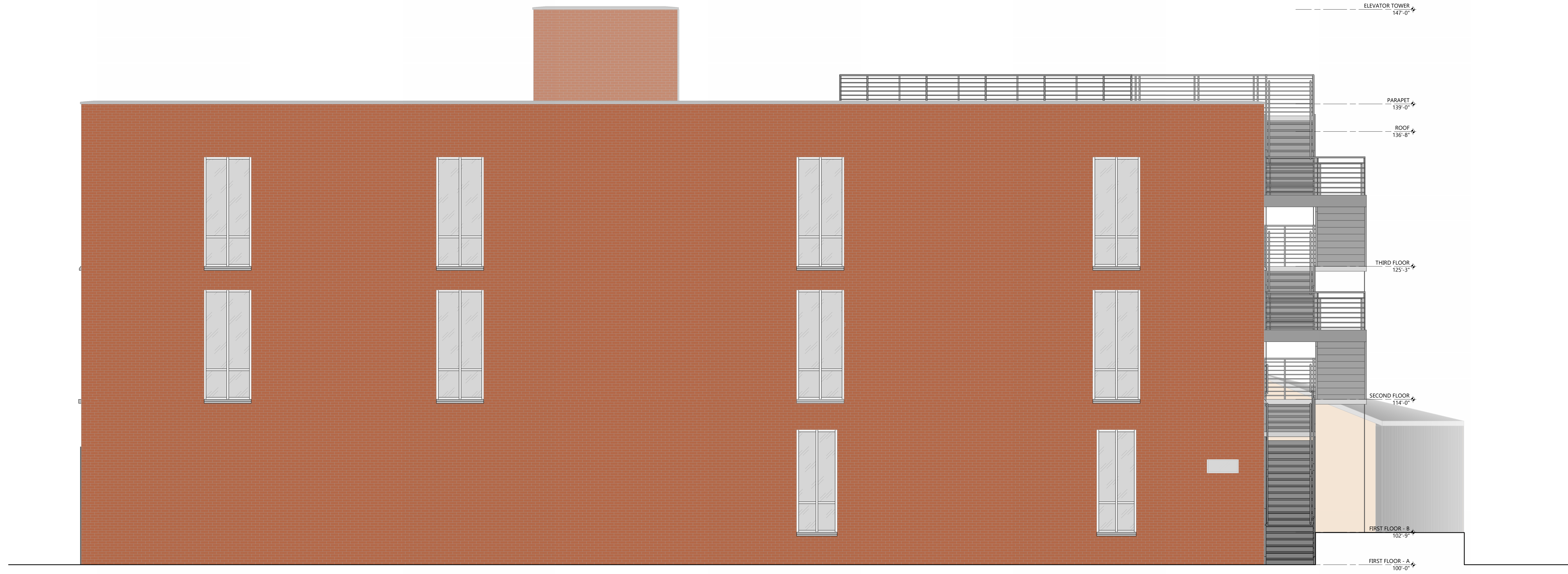
PRELIMINARY DATES
 JULY 18, 2024
 AUG. 8, 2024

NOT FOR CONSTRUCTION

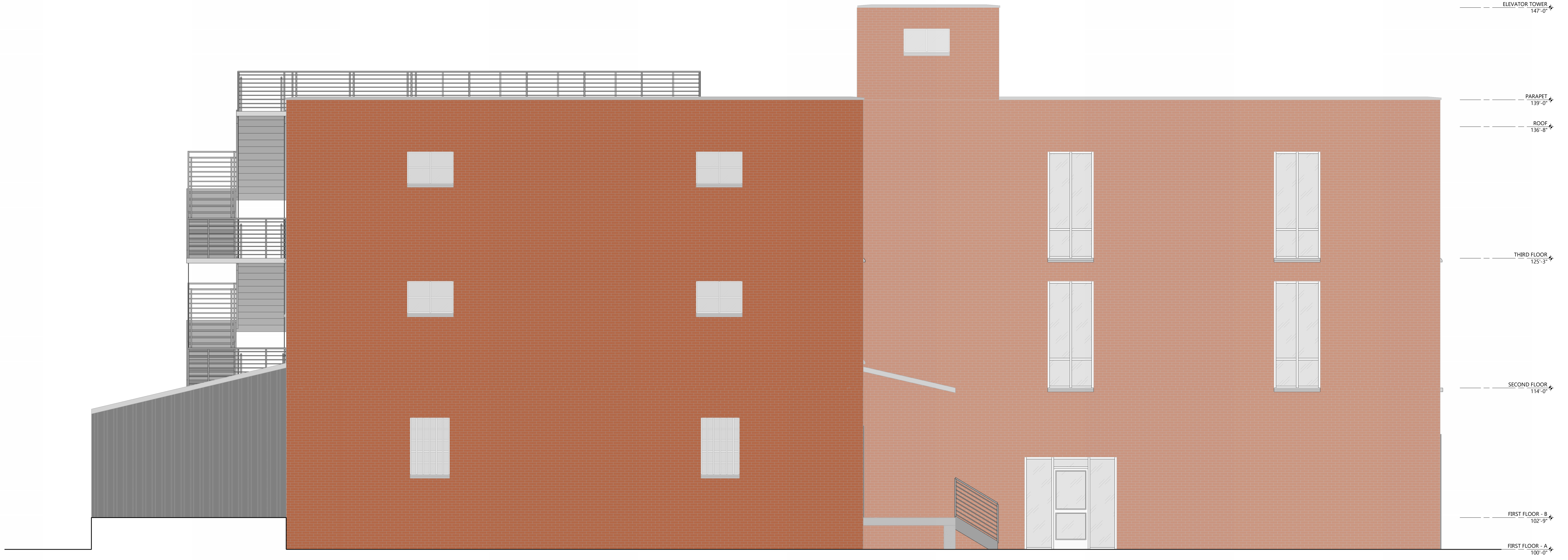
JOB NUMBER
 240144400

SHEET NUMBER

A2.1



1 NORTH ELEVATION
 SCALE: 1/4" = 1'-0"



2 SOUTH ELEVATION
 SCALE: 1/4" = 1'-0"

© 2024 EXCEL ENGINEERING, INC. ALL RIGHTS RESERVED.
 8/8/2024 9:17:58 AM