

FOR SALE: ~3200 sq ft East Village Office

1010 E 2nd St Tulsa, OK 74120

\$650,000 (\$203/sq ft)



OVERVIEW: Perfect owner/user office

~3200 sq ft office building with fenced lay down/parking area (~13,350 sq ft, part of fenced area includes additional space from RR easement), 5 car gravel parking lot. Complete interior renovation in 2021. 2015 TPO roof. One HVAC replaced in 2018, one in 2023.

Suite A (~1920 sq ft) currently available. Suite B (~1280 sq ft) leased at \$1650/month NNN.

Conveniently located downtown in the East Village adjacent to shops and restaurants, with easy access to 244 and highway 75.

Please call for tours– 918-605-5928.

HIGHLIGHTS

- \$650,000
- Suite B Leased \$1650/month NNN
- Downtown location with easy access to 244
- New HVAC in 2023
- Dedicated parking
- Fenced in lay down area

Sale Price

\$650,000

Building/Lot Size

~3200 sq ft/13,504 sq ft

Location

1010 E 2nd St Tulsa, OK 74120

FOR SALE: ~3200 sq ft East Village Office

1010 E 2nd St Tulsa, OK 74120

\$650,000 (\$203/sq ft)



FOR SALE: ~3200 sq ft East Village Office

1010 E 2nd St Tulsa, OK 74120

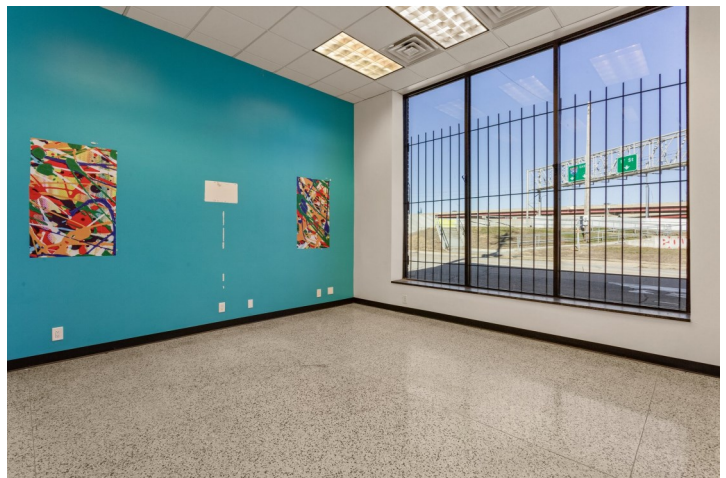
\$650,000 (\$203/sq ft)



FOR SALE: ~3200 sq ft East Village Office

1010 E 2nd St Tulsa, OK 74120

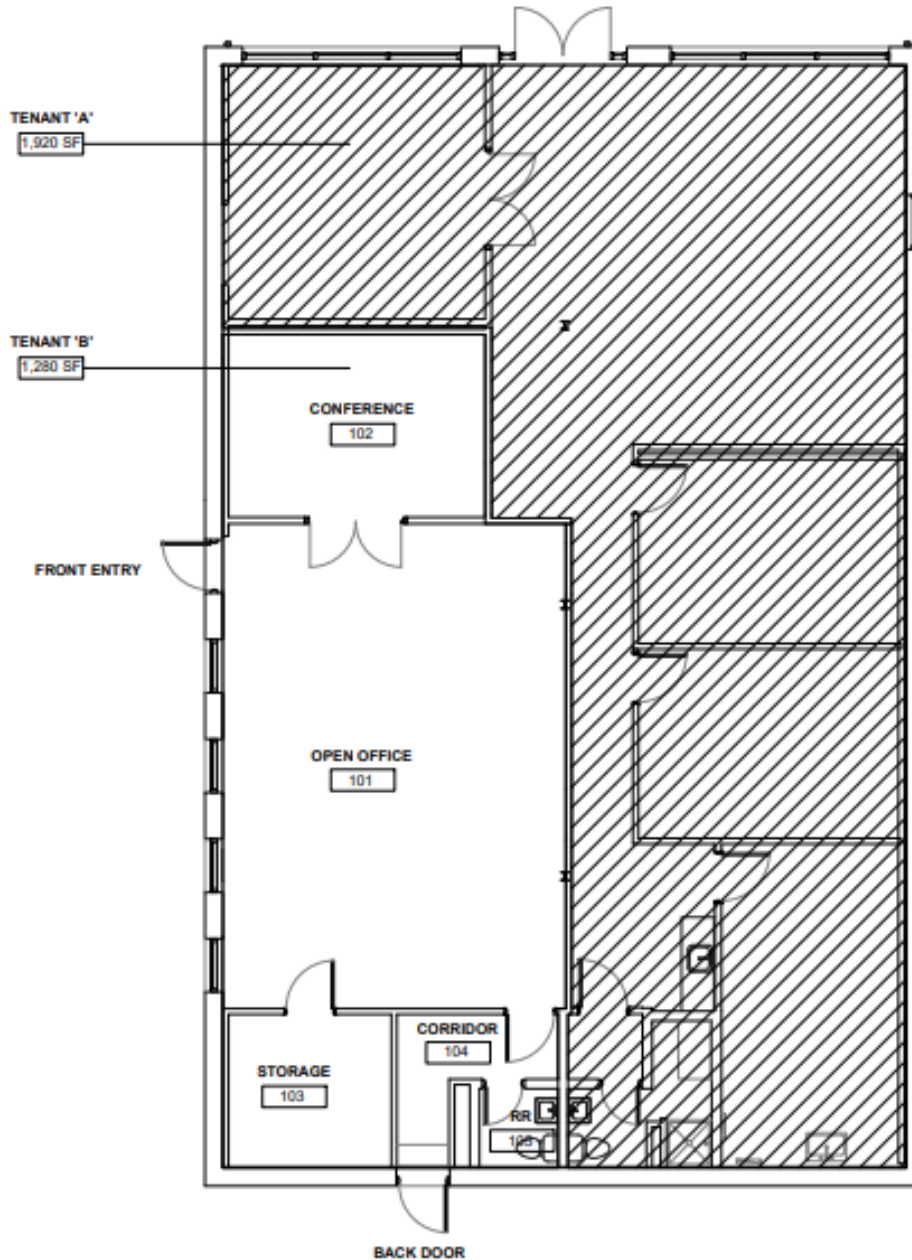
\$650,000 (\$203/sq ft)



FOR Sale: ~3200 sq ft East Village Office

1010 E 2nd St Tulsa, OK 74120

\$650,000 (\$203/sq ft)



FOR SALE: ~3200 sq ft East Village Office

1010 E 2nd St Suite B Tulsa, OK 74120

\$650,000 (\$203/sq ft)



FOR SALE: ~3200 sq ft East Village Office

1010 E 2nd St Suite B Tulsa, OK 74120

\$650,000 (\$203/sq ft)

