

FOR LEASE

5,184 SF | \$1.95/SF/MO. NNN

Coppertop Professional Center Class A Medical Space

3818 SW 21st Street, Suite 100, Redmond, OR 97756



PROPERTY DETAILS

Suite 100: 5,184 SF
Lease Rate: \$1.95/SF/Mo. NNN
NNNs: Est. at \$0.59/SF/Mo.
Zoning: Strip Service Commercial (C1)
Parking: 56 onsite spaces
Date Avail.: March 1, 2026

HIGHLIGHTS

- **Suite 100** features two separate reception areas, four offices, six exam rooms, a treatment room, X-ray room, lab space, and breakroom
- Three-story Class A office building with mountain views
- Located in a fast growing area in south Redmond
- Easy access to Hwy 97 and the Redmond Municipal Airport

Bruce Churchill, Principal Broker | Kristie Schmitt, CCIM

600 SW Columbia St., Ste. 6100 | Bend, OR 97702

541.383.2444 | www.CompassCommercial.com

COMPASS
COMMERCIAL

**REAL
ESTATE
SERVICES**

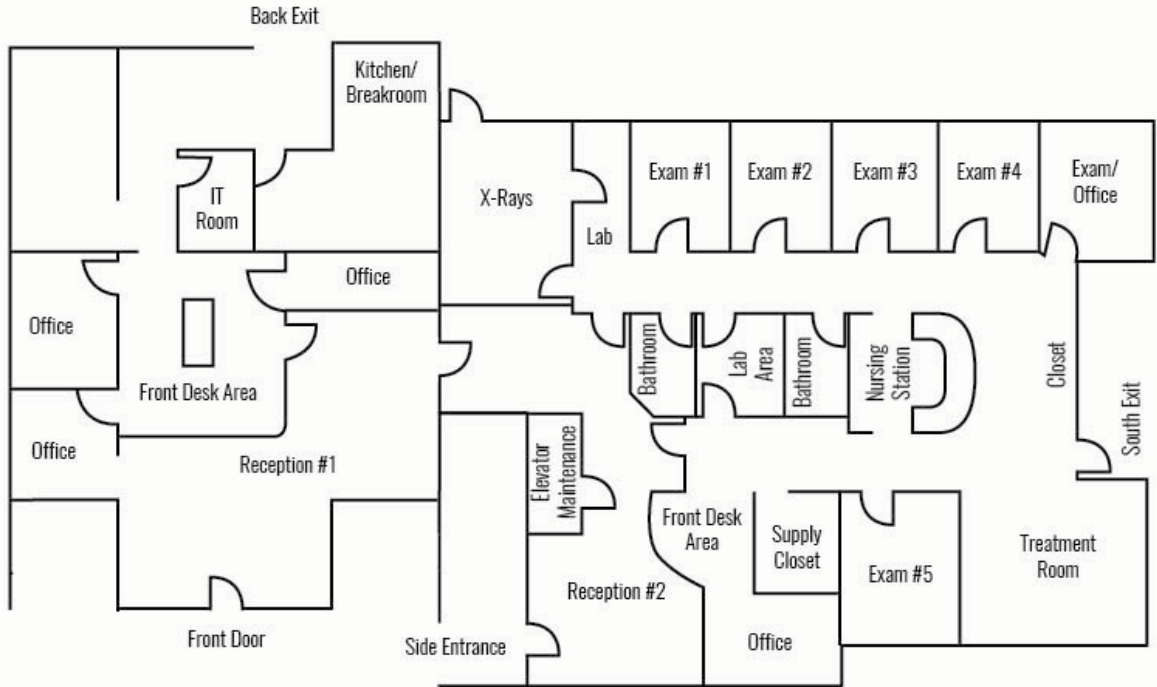
FOR LEASE

5,184 SF | \$1.95/SF/MO. NNN

Coppertop Professional Center Class A Medical Space

3818 SW 21st Street, Suite 100, Redmond, OR 97756

FLOOR PLAN



Brokers are licensed in the state of Oregon. This information has been furnished from sources we deem reliable, but for which we assume no liability. This is an exclusive listing. The information contained herein is given in confidence with the understanding that all negotiations pertaining to this property be handled through Compass Commercial Real Estate Services. All measurements are approximate.



Bruce Churchill
Principal Broker
Cell 541.280.7560
bchurchill@compasscommercial.com



Kristie Schmitt, CCIM
Broker
Cell 541.527.5515
kschmitt@compasscommercial.com

COMPASS
COMMERCIAL

REAL ESTATE
SERVICES